

**Document number:** pe83-40-p-2101-97dab

**Document title:** Wiring diagram of automatic air conditioning (AAC) control unit

<b>Code:</b>	<b>Designation:</b>	<b>Position:</b>
A0	Color code key	88L
A9	Refrigerant compressor	22L
A9/7	Refrigerant compressor with magnetic clutch	31L
A9/7	Refrigerant compressor with magnetic clutch	29L
A9/7	Refrigerant compressor with magnetic clutch	26L
A9/7x1	Electrical connector 1 for refrigerant compressor with magnetic clutch	31K
A9/7x1	Electrical connector 1 for refrigerant compressor with magnetic clutch	25K
A9/7x1	Electrical connector 1 for refrigerant compressor with magnetic clutch	29K
A9/7y1	Refrigerant compressor regulation valve	26L
A9/7y2	Refrigerant compressor magnetic clutch	29L
A9/7y2	Refrigerant compressor magnetic clutch	27L
A9/7y2	Refrigerant compressor magnetic clutch	31L
A9x1	Refrigerant compressor electrical connector	22K
A9y1	Refrigerant compressor regulation valve	22L
B10/38	Rear footwell air outlet temperature sensor	77L
B10/4	Interior temperature sensor	43L
B12	Refrigerant pressure sensor	37L
B31	Emissions sensor	39L
B82	Vehicle interior humidity/temperature sensor	79L
CAN B	Interior CAN	46K
Code B09	Refrigerant compressor with magnetic clutch	25E
E10/1	Left center air outlet symbol illumination	48L
E10/2	Left front side air outlet symbol illumination	50L
E10/3	Right front side air outlet symbol illumination	51L
E10/5	Rear air outlet symbol illumination	52L
M16/33	Left B-pillar air distribution actuator motor	74L
M16/34	Right B-pillar air distribution actuator motor	72L
M2/1	Rear blower motor	65L
N10/1	Front SAM control unit with fuse and relay module	4L
N10/1	Front SAM control unit with fuse and relay module	13L
N10/1	Front SAM control unit with fuse and relay module	34L
N10/1	Front SAM control unit with fuse and relay module	34L
N10/1f12	Fuse 12	1K
N10/2	Rear SAM control unit with fuse and relay module	58L
N10/2f66	Fuse 66	57L
N22/4	Rear air conditioning operating unit	69L
N22/7	Automatic air conditioning control and operating unit	4A
N22/7	Automatic air conditioning control and operating unit	12A
N22/7	Automatic air conditioning control and operating unit	20A
N22/7	Automatic air conditioning control and operating unit	28A

**Document number:** pe83-40-p-2101-97dab

**Document title:** Wiring diagram of automatic air conditioning (AAC) control unit

<b>Code:</b>	<b>Designation:</b>	<b>Position:</b>
N22/7	Automatic air conditioning control and operating unit	36A
N22/7	Automatic air conditioning control and operating unit	45A
N22/7	Automatic air conditioning control and operating unit	53A
N22/7	Automatic air conditioning control and operating unit	61A
N22/7	Automatic air conditioning control and operating unit	70A
N22/7	Automatic air conditioning control and operating unit	77A
N22/7s1	Rear window heater button	7A
N22/7s2	Air recirculation mode button	11A
N70/3	Overhead control panel electronics	19L
U12	Valid for left-hand drive vehicles	40H
U12	Valid for left-hand drive vehicles	10F
U12	Valid for left-hand drive vehicles	3C
U12	Valid for left-hand drive vehicles	32F
U12	Valid for left-hand drive vehicles	40F
U12	Valid for left-hand drive vehicles	54J
U12	Valid for left-hand drive vehicles	10F
U13	Valid for right-hand drive vehicles	40J
U13	Valid for right-hand drive vehicles	3C
U13	Valid for right-hand drive vehicles	32F
U13	Valid for right-hand drive vehicles	43F
U13	Valid for right-hand drive vehicles	54J
U328	Valid for right-hand drive vehicles	48D
U74	Valid for air outlet symbol illumination	21E
U74	Valid for diesel engines	28F
U75	Valid for diesel engines	23E
U75	Valid for gasoline engines	30F
U897	Valid for gasoline engines	75F
U897	Valid for intelligent servo module for DIRECT SELECT	53J
U897	Valid for intelligent servo module for DIRECT SELECT	65E
U897	Valid for intelligent servo module for DIRECT SELECT	60E
U940	Valid for intelligent servo module for DIRECT SELECT	53J
U940	Valid without DIRECT SELECT	62K
U940	Valid without DIRECT SELECT	63E
U940	Valid without DIRECT SELECT	75F
U991	Valid for all except tilting/sliding roof	17G
W15/1	Right footwell ground point	33H
W15/2	Left footwell ground point	33H
W15/5	Left front footwell ground point	4F
W15/5	Left front footwell ground point	11G

**Document number:** pe83-40-p-2101-97dab

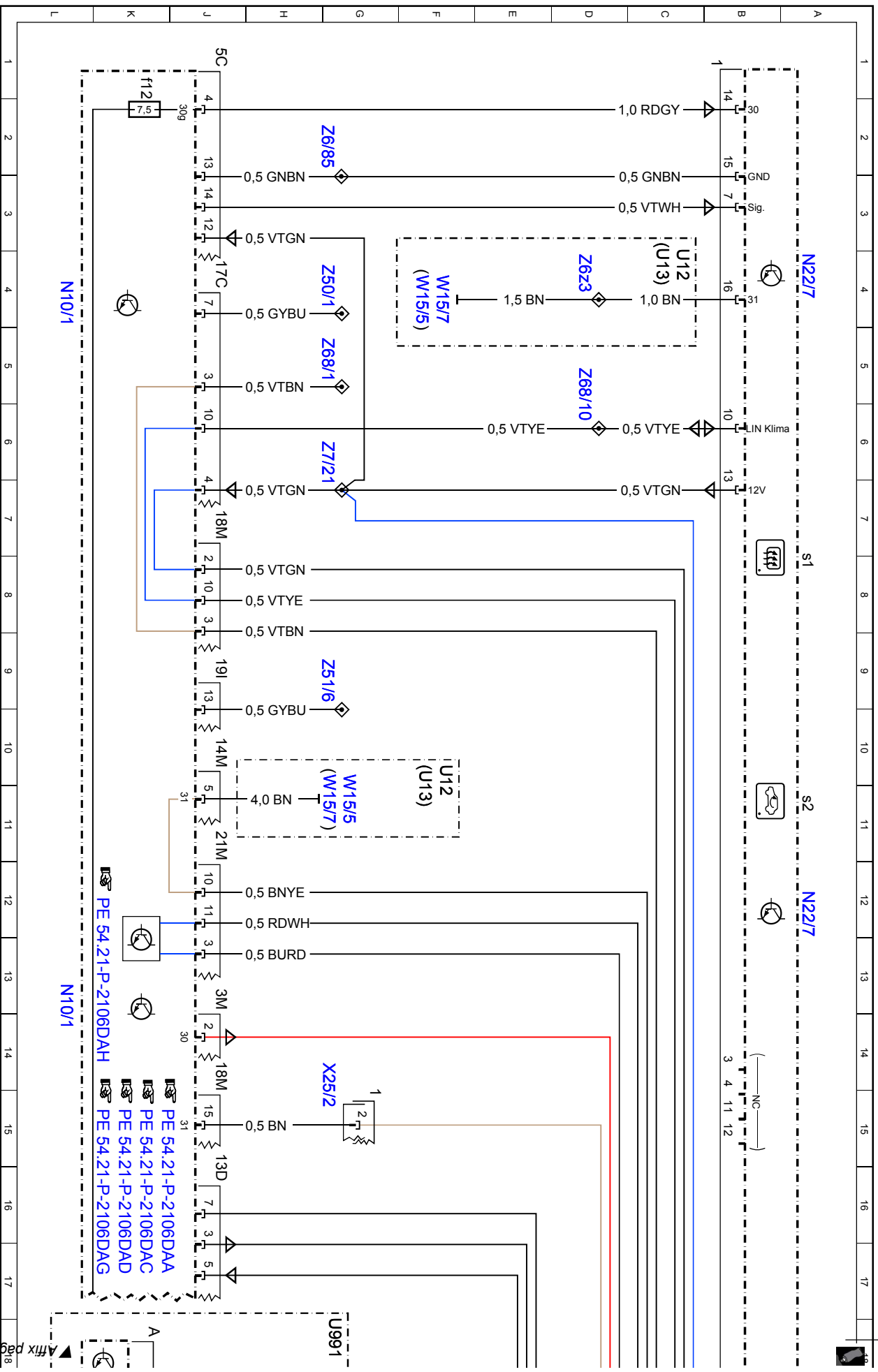
**Document title:** Wiring diagram of automatic air conditioning (AAC) control unit

<b>Code:</b>	<b>Designation:</b>	<b>Position:</b>
W15/5	Left front footwell ground point	40L
W15/5	Left front footwell ground point	55L
W15/7	Right front footwell ground point	11G
W15/7	Right front footwell ground point	40L
W15/7	Right front footwell ground point	4F
W15/7	Right front footwell ground point	55L
W18	Left front seat crossmember ground point	54L
W18	Left front seat crossmember ground point	63L
W19	Right front seat crossmember ground point	54L
W19	Right front seat crossmember ground point	61E
X138/1	Front center console electrical connector	66G
X138/1	Front center console electrical connector	60H
X138/1	Front center console electrical connector	76H
X15/5	Temperature sensor electrical connector	43G
X18	Vehicle interior and harness for taillamp electrical connector	70F
X25/2	Engine compartment/interior electrical connector	14G
X25/2	Engine compartment/interior electrical connector	34F
X26	Interior and engine wiring harness electrical connector	31H
X26	Interior and engine wiring harness electrical connector	24G
X26	Interior and engine wiring harness electrical connector	22G
X26	Interior and engine wiring harness electrical connector	27H
X26	Interior and engine wiring harness electrical connector	29H
X30/32	Left vehicle floor interior CAN voltage distributor electrical connector	46L
X83/11	Circuit 56 exterior lights switch electrical connector	78G
Z111	Air conditioning connector sleeve 1	35G
Z37/6Z2	CAN bus high connector sleeve	46E
Z37/7Z2	CAN bus low connector sleeve	47E
Z50/1	Circuit 58d instrument panel connector sleeve	4G
Z50/1	Circuit 58d instrument panel connector sleeve	50G
Z51/6	Circuit 58d vehicle interior connector sleeve	9G
Z51/6	Circuit 58d vehicle interior connector sleeve	70H
Z6/79	Circuit 58d vehicle interior connector sleeve	52E
Z6/85	Front center console circuit 31 connector sleeve	61L
Z6/85	Sensor ground connector sleeve	2H
Z6/85	Sensor ground connector sleeve	43E
Z68/1	Instrument panel circuit 31 climate control LIN connector sleeve	76D
Z68/1	Instrument panel circuit 31 climate control LIN connector sleeve	5G
Z68/1	Instrument panel circuit 31 climate control LIN connector sleeve	70D
Z68/1	Instrument panel circuit 31 climate control LIN connector sleeve	79E

**Document number:** pe83-40-p-2101-97dab

**Document title:** Wiring diagram of automatic air conditioning (AAC) control unit

<b>Code:</b>	<b>Designation:</b>	<b>Position:</b>
Z68/10	Instrument panel LIN connector sleeve	5D
Z68/10	Instrument panel LIN connector sleeve	79E
Z68/11	Rear air conditioning LIN bus ground line connector sleeve	70G
Z68/12	Rear air conditioning LIN bus positive lead connector sleeve	72G
Z68/13	Rear air conditioning LIN bus data line connector sleeve	71G
Z6z1	Circuit 31 connector sleeve	40G
Z6z1	Circuit 31 connector sleeve	49E
Z6z3	Circuit 31 connector sleeve	4D
Z7/21	Air conditioning circuit 30 connector sleeve	6G
Z7/21	Air conditioning circuit 30 connector sleeve	72D
Z7/21	Air conditioning circuit 30 connector sleeve	79D



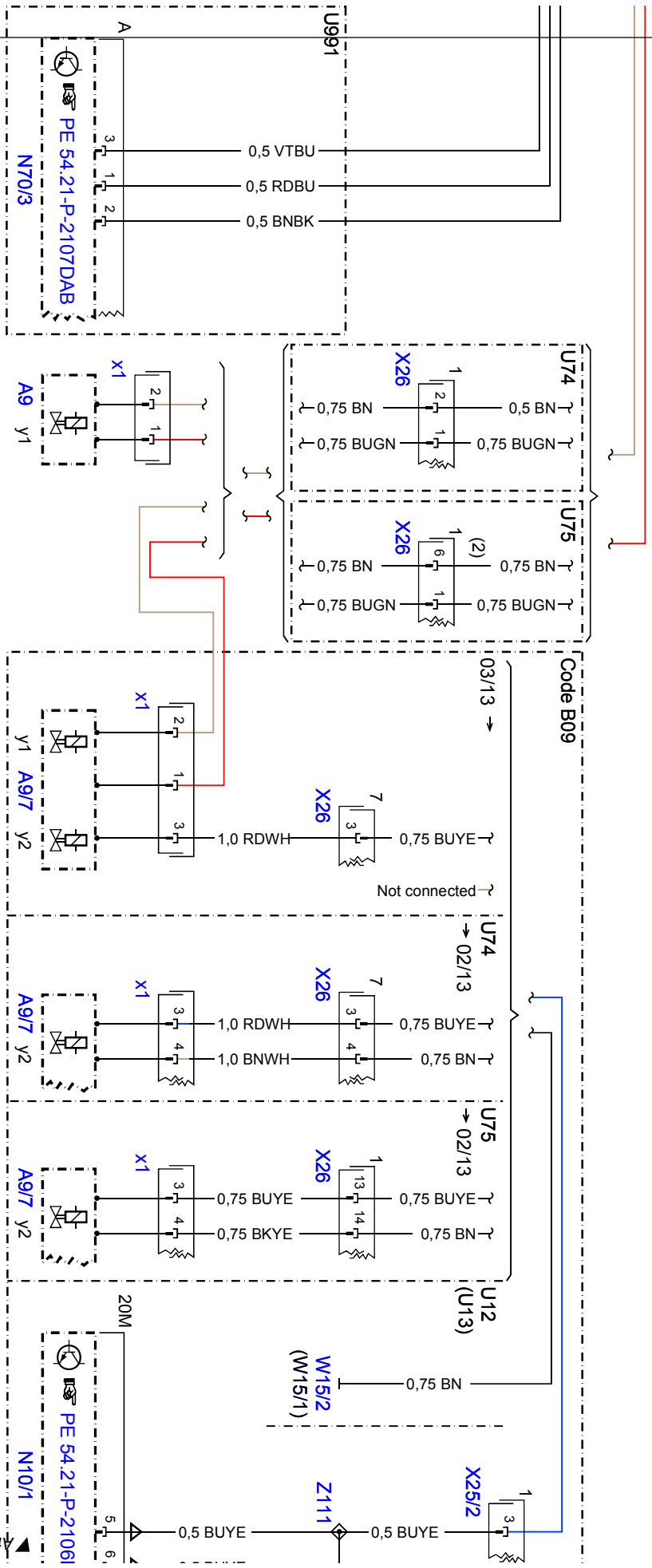
▲ Affix page 2 here



N22/7

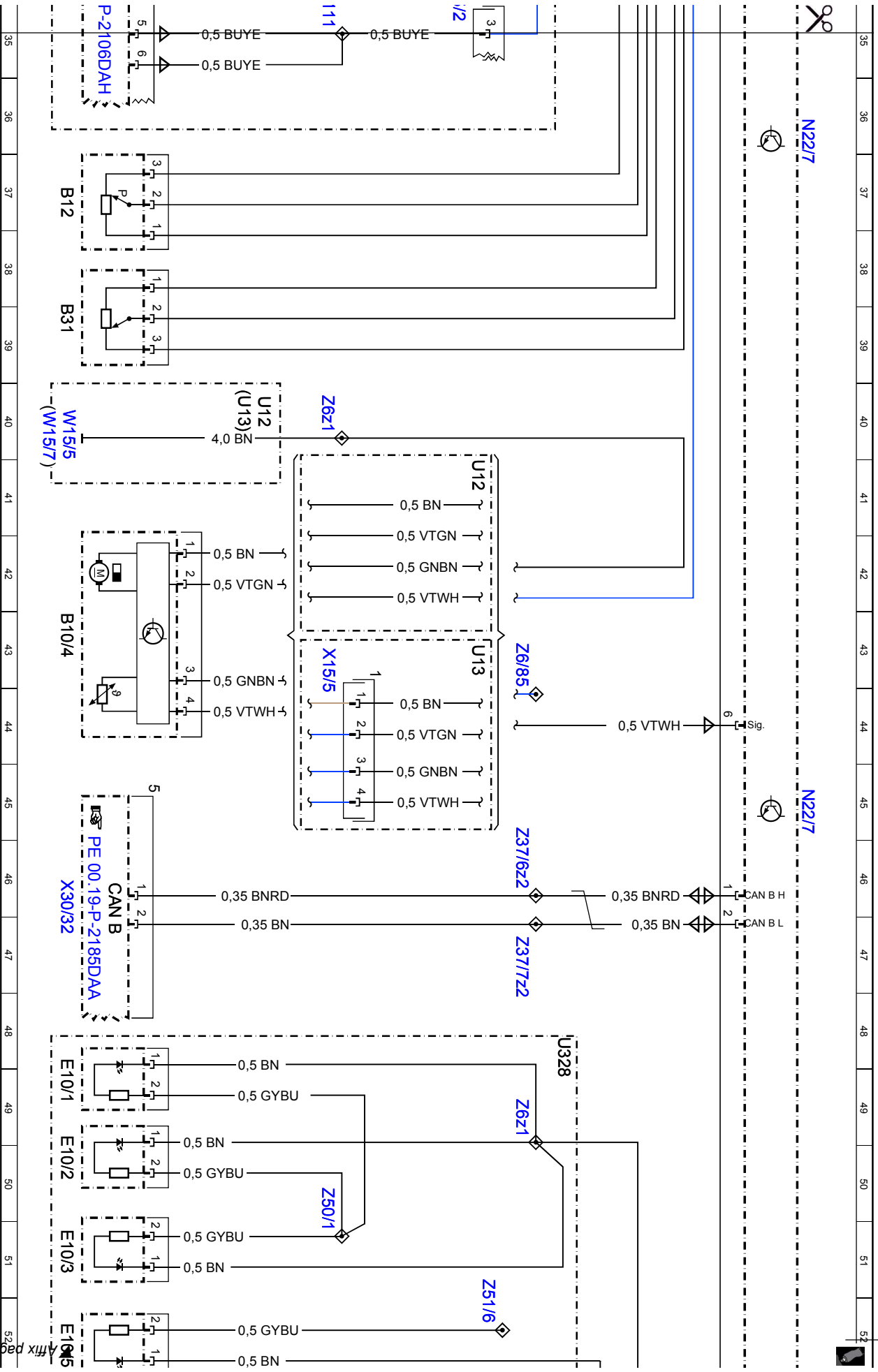


N22/7



Cut here

▲ Affix page 3 here

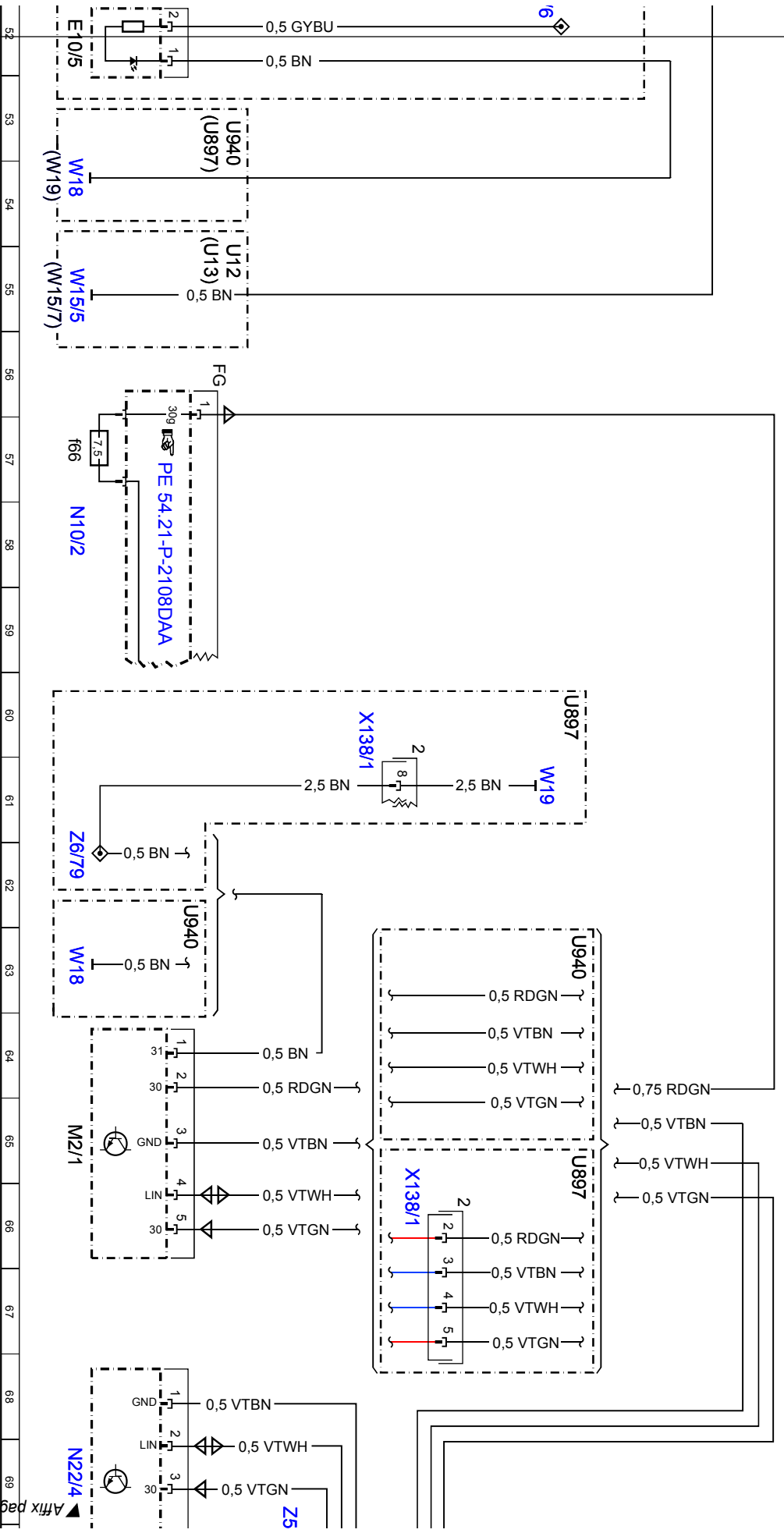


Cut here

Affix page 4 here

N22/7

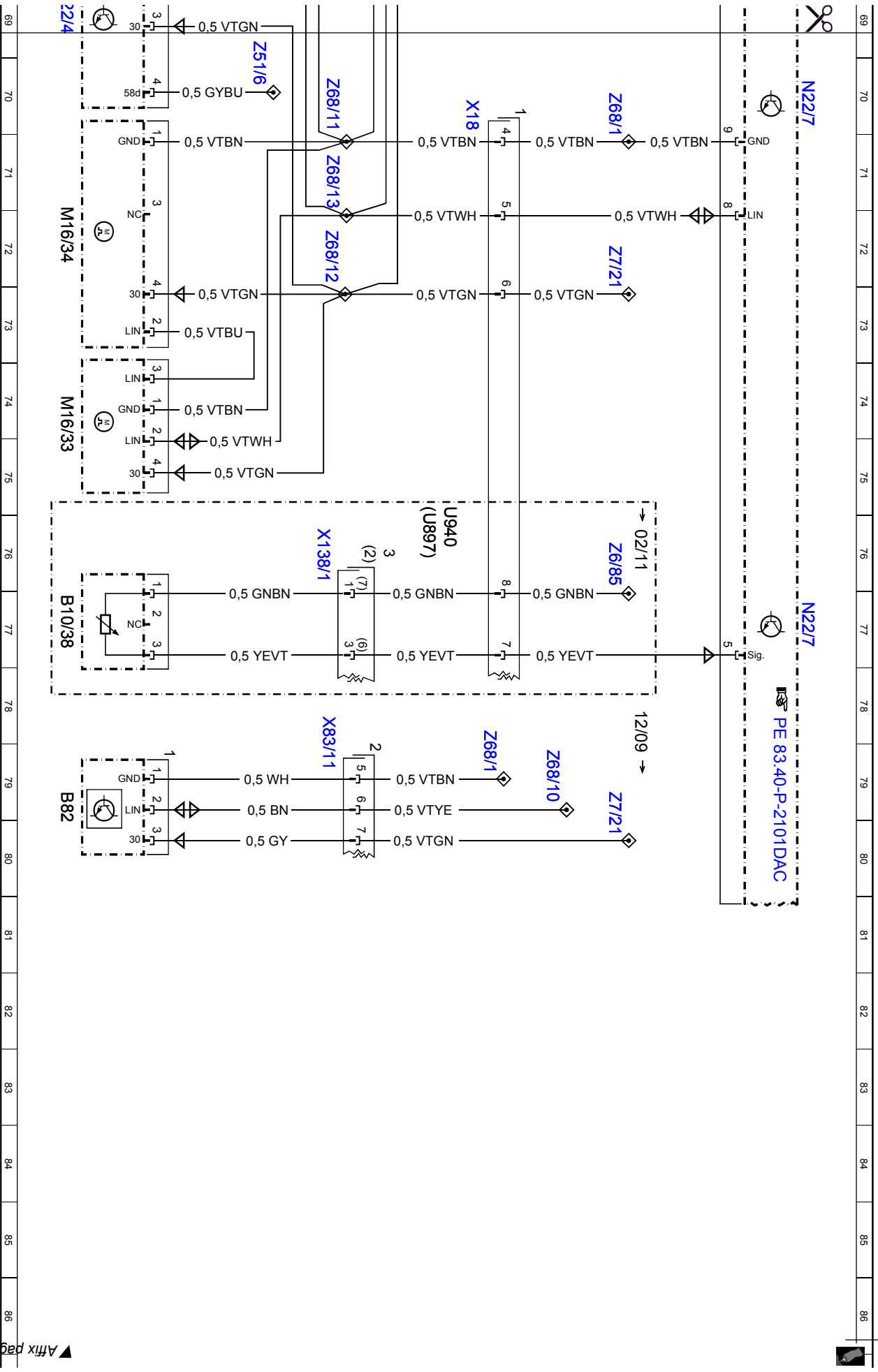
N22/7



Cut here

Affix page 5 here

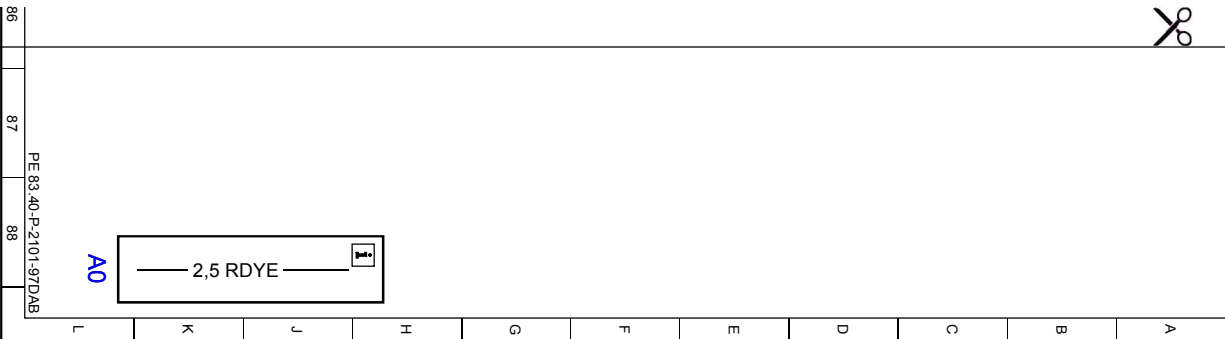




99 100 101 102 103 104 105 106 107 108 109 110 111 112 113 114 115 116 117 118 119 120 121 122 123 124 125 126 127 128 129 130 131 132 133 134 135 136 137 138 139 140 141 142 143 144 145 146 147 148 149 150 151 152 153 154 155 156 157 158 159 160 161 162 163 164 165 166 167 168 169 170 171 172 173 174 175 176 177 178 179 180 181 182 183 184 185 186

▲ Affix page 6 here

86 87 88



Cut here