

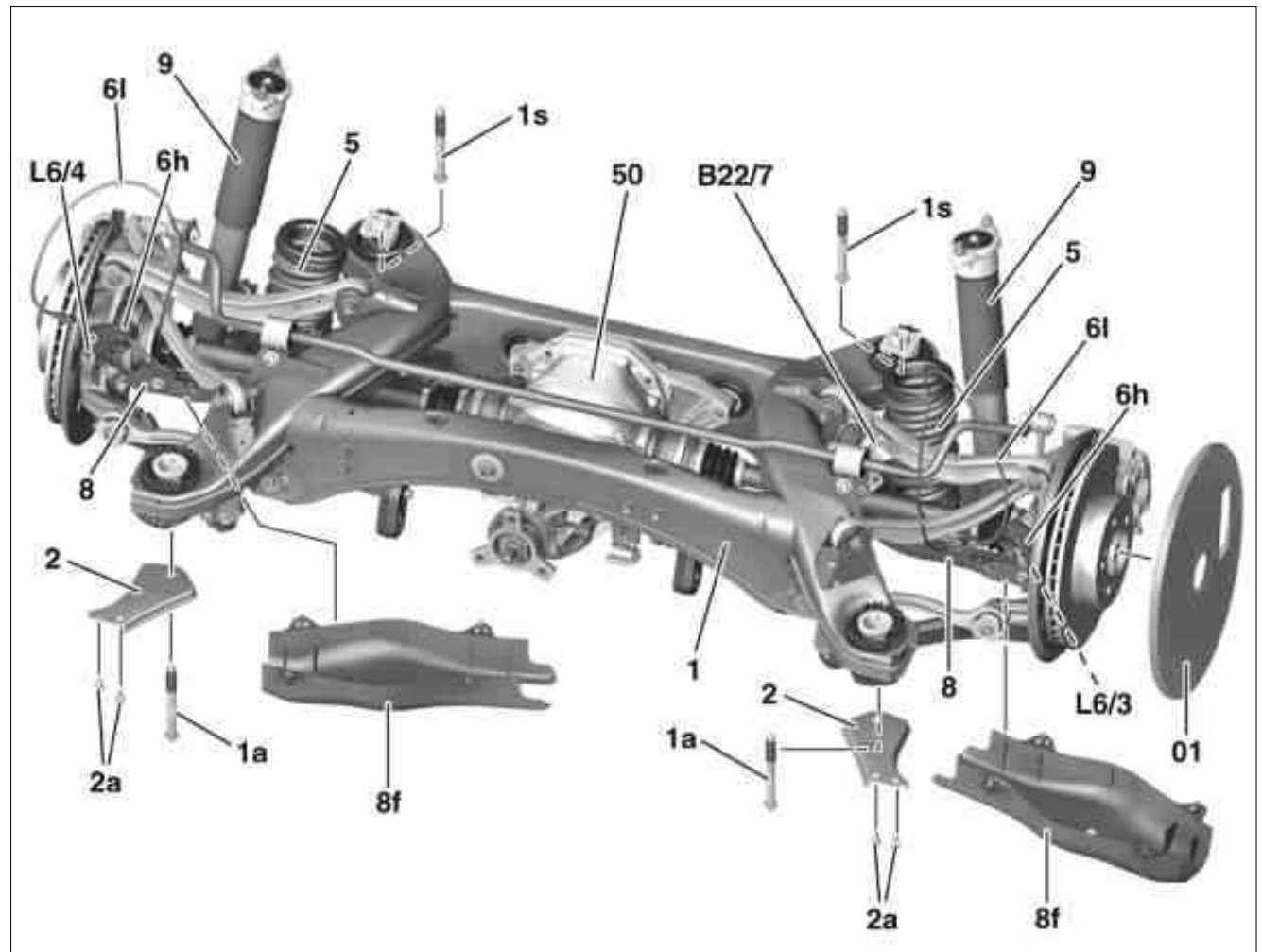
Document title Remove/install complete rear axle

Document number ar3510p0010ew

Model 212, 218

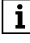
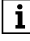

Shown on model 218 with code 615 (Bi-xenon headlamps with active light function) except code 488 (Steel/air suspension) and except code 489 (AIRMATIC)

01	Guard plate
1	Rear axle
1a	Screw
1s	Screw
2	Stop plate
2a	Bolts
5	Rear axle spring
6h	Bracket
6l	Electrical line
8	Spring control arm
9	Shock absorber
50	Rear axle gear
B22/7	Left rear level sensor
L6/3	Left rear axle rpm sensor
L6/4	Right rear axle rpm sensor



P35.10-2327-06

	Risk of death caused by vehicle slipping or toppling off of the lifting platform.	Align vehicle between vehicle lift columns and position the four support plates at the vehicle lift support points specified by the vehicle manufacturer.	AS00.00-Z-0010-01A
	Notes on handling, transport and storage of ceramic brake disks	Model 212, 218 with code B07 (AMG - ceramic brake system)	AH42.10-P-9406-13A
	Notes on self-locking nuts and bolts		AH00.00-N-0001-01A
	Notes on threaded connections fastened using a tightening angle-based tightening process		AH00.00-P-0020-01A
	Notes on AIRmatic	Model 212 with code 488 (Steel/air suspension) Model 212 with code 489 (AIRMATIC) Model 218 with code 488 (Steel/air suspension) Model 218 with code 489 (AIRMATIC)	AH32.22-P-1000-02EW
	Notes on repair work on suspension components		AH00.00-P-0100-01A
	Remove/install		
1	Shift transmission to position N or to idle.		
2	Secure vehicle on vehicle lift.		AR00.60-P-0100EWS
3	Vent pressure in AIRMATIC system using vehicle diagnosis system.	Model 212.0/1, 218 with code 488 (Steel/air suspension) Model 212.0/1, 218 with code 498 (Japanese version) Model 212.2	
			AD00.00-P-2000-04A
4	Switch off ignition and store transmitter key outside of transmission range (min. 2 m).		
5	Remove rear wheels.		
			AP40.10-P-4050EW
6	Release left and right underfloor paneling in area of threaded axle connection.		AR61.30-P-1001EL
7	Remove left and right rear cross strut.	Model 212.2, 218.9 Bolt, rear diagonal strut bracket mount to body	*BA61.10-P-1006-01H
8	Remove exhaust system downstream of connecting point of center muffler.	Model 212, 218 Model 212 with engine 271.9 with code 924 (Bivalent natural gas drive) Model 212, 218 with engine 157, 276, 278 Model 212 with engine 156, 272, 273	AR49.10-P-7141EN AR49.10-P-7100EL AR49.10-P-7100EW

		Model 212, 218 with engine 642, 651 Model 212 with engine 274	AR49.10-P-7100EWI AR49.10-P-7100MR
9	Release threaded connections of propeller shaft intermediate bearing on frame floor assembly.	 Undo threaded connection approx. three to four turns.	AR41.10-P-0050EW
10	Remove propeller shaft from rear axle differential (50).	 Flex disk remains on propeller shaft.	AR41.10-P-0050EW
11	Remove center brake cable.		AR42.20-P-0523EW
12	Disconnect electrical connector from right rear brake pad wear sensor and remove right rear brake pad wear sensor from brake caliper.	 Screw/bolt, brake wear sensor to brake caliper	*BA42.10-P-1003-12J
13	Disconnect electrical connector from left rear level sensor (B22/7) and unclip from holder.	Model 212.0/1 with code 488 (Steel/air suspension) Model 212.0/1 with code 489 (AIRMATIC) Model 212.0/1 with code 615 (Bi-xenon headlamps with active light function) Model 212.0/1 with code 621 (Intelligent Light System (left-hand traffic)) Model 212.0/1 with code 622 (Intelligent Light System) Model 212.0/1 with code 631 (Static LED headlamps, left-hand traffic) Model 212.0/1 with code 632 (Headlamps, LED, static, right-side traffic) Model 212.0/1 with code 640 (SAE dynamic LED headlamps, right-hand traffic) Model 212.0/1 with code 641 (Dynamic LED headlamps, left-hand traffic) Model 212.0/1 with code 642 (Dynamic LED headlamps, right-hand traffic) Model 212.2 Model 218	
14	Disconnect electrical connector from right rear level sensor and unclip from holder.	Model 212.0/1, 218 with code 488 (Steel/air suspension) Model 212.0/1, 218 with code 489 (AIRMATIC) Model 212.2	
15	Disconnect electrical connectors of damping valve units at shock absorbers (9) and unclip electric lines (6l) from holders (6h).	Model 212.0/1, 218 with code 488 (Steel/air suspension) Model 212.0/1, 218 with code 489 (AIRMATIC) Model 212.2	
16	Remove rear axle rpm sensors (L6/3, L6/4) from wheel carriers.		AR42.40-P-0820EW
17.1	Remove rear axle springs (5).	Model 212.0/1 except code 488 (Steel/air suspension) except code 489 (AIRMATIC) Model 218 except code 488 (Steel/air suspension) except code 489 (AIRMATIC)	AR32.20-P-0230EW
17.2	Remove air suspension bellows.	Model 212.0/1 with code 488 (Steel/air suspension) Model 212.0/1 with code 489 (AIRMATIC) Model 212.2	AR32.22-P-1500EW
18	Remove brake caliper with connected brake hoses and hang to one side free of tension.	Model 212 (except 212.074/075/076/077/092/274/275/276/277/292) Model 212.074/075/076/077/092/274/275/276/277/292 Model 218.374/375/376/392/974/975/976/992 Model 218 (except 218.374/375/376/392/974/975/976/992)	AR42.10-P-0080EW AR42.10-P-0080CMG AR42.10-P-0080EL
19	Remove rear shock absorbers (9).	Model 212.0/1 except code 488 (Steel/air suspension) except code 489 (AIRMATIC) Model 218 except code 488 (Steel/air suspension) except code 489 (AIRMATIC)	AR32.25-P-0110EW

		Model 212.0/1, 218 with code 488 (Steel/air suspension) Model 212.0/1, 218 with code 489 (AIRMATIC) Model 212.2	AR32.25-P-0110EWA
20	Support rear axle differential (50) and secure with tensioning strap to prevent it from falling down. WS 000 588 11 62 00 Major assembly mount WS 000 588 10 62 00 Support plate		WS01.00-P-0092B WS26.00-P-3309B
21	Attach guard plates (01).	☒ Guard plate	AR42.00-P-0100-01A *220589013100
22	Remove screws (1s).	⚠ Do not use an impact wrench. Otherwise, the threads will be damaged. i Installation: Clean threads in frame floor assembly using compressed air and recut. i Installation: Replace screw/bolts (1s) with new ones. Nm Self-locking bolt of rear elastomer bearing on rear axle carrier to frame floor assembly	*BA35.10-P-1002-01N
23	Unscrew screws (1a, 2a) and remove stop plates (2).	⚠ Do not use an impact wrench. Otherwise, the threads will be damaged. i Installation: Clean threads in frame floor assembly using compressed air and recut. i Installation: Replace bolts (1a, 2a). Nm Bolt, stop plate to body Nm Self-locking bolt of front elastomer bearing on rear axle carrier to frame floor assembly	*BA35.10-P-1003-01N *BA35.10-P-1001-01N
24	Lower rear axle (1). WS	i Installation: Check whether cavity preservation has been performed on the rear axle carrier. If not, ↓ perform cavity preservation. 000 588 01 72 00 Sealing and corrosion protection gun Cavity preservation (free of solvents), 1 liter	AR35.10-P-0010-03A WS97.00-N-0002B *BR00.45-Z-1003-05A
25	Install in the reverse order		
	Measure		
26	Perform chassis alignment.		AR40.20-P-0200EW

Nm Rear axle carrier

Number	Designation		Model 212	Model 218	
BA35.10-P-1001-01N	Self-locking bolt of front elastomer bearing on rear axle carrier to frame floor assembly	Stage 1	Nm	80	80
		Stage 2		lösen	lösen
		Stage 3	Nm	80	80
		Stage 4	∠°	90	90

Nm Rear axle carrier

Number	Designation		Model 212	Model 218	
BA35.10-P-1002-01N	Self-locking bolt of rear elastomer bearing on rear axle carrier to frame floor assembly	Stage 1	Nm	80	80
		Stage 2		lösen	lösen
		Stage 3	Nm	80	80
		Stage 4	∠°	90	90

Nm Rear axle carrier

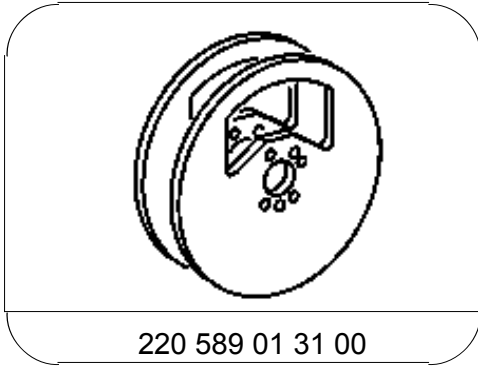
Number	Designation		Model 212	Model 218
BA35.10-P-1003-01N	Bolt, stop plate to body	Nm	30	30

Nm Rear axle brake caliper

Number	Designation		Model 212	Model 218
BA42.10-P-1003-12J	Screw/bolt, brake wear sensor to brake caliper	Nm	8	8

Nm Frame floor assembly

Number	Designation		Model 212	Model 218
BA61.10-P-1006-01H	Bolt, rear diagonal strut bracket mount to body	Nm	60	60



Guard plate

Repair materials

Number	Designation	Order number
BR00.45-Z-1003-05A	Cavity preservation (free of solvents), 1 liter	A 000 986 72 70 10