

MODEL 212, 218

## Front control and operating unit

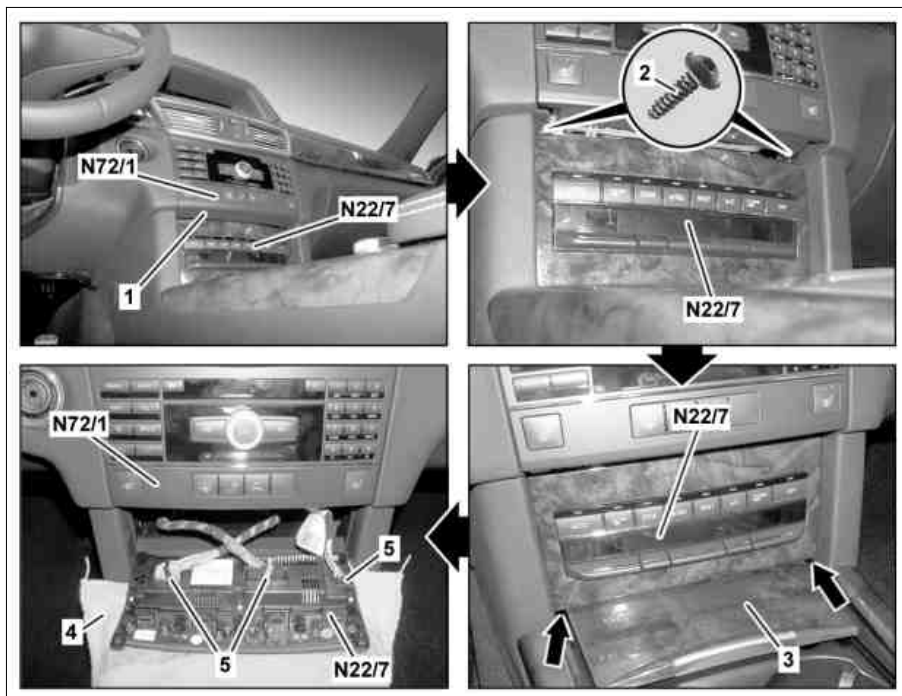
Shown on model 212 with code (279)

## Electronic gear selector

- 1 Cover  
 2 Screw  
 3 Cover  
 4 Dry cloth  
 5 Electrical connectors

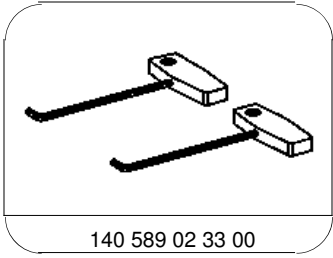
N22/7 Automatic air conditioning control  
 and operating unit

N72/1 Upper control panel control unit



P83.40-4278-06

☒ ☒	Remove/install		
⚠	Information on preventing damage to electronic components due to electrostatic discharge		AH54.00-P-0001-01A
AD	<p>1 Buffer the basic data of the automatic air conditioning control and operating unit (N22/7) in STAR DIAGNOSIS</p> <p>Connect STAR DIAGNOSIS and read out fault memory</p>	<p>When replacing the automatic air conditioning control and operating unit (N22/7).</p> <p><b>i</b> <b>Installation:</b> Transfer the buffered basic data onto the new automatic air conditioning control and operating unit (N22/7).</p>	AD00.00-P-2000-04A
2	Move selector lever or gearshift lever to rearmost position	<b>i</b> Depending on vehicle equipment.	
3	Switch off ignition		
4	Unclip cover (1) from upper control panel control unit (N72/1) using extraction hook and remove	☒	*140589023300
5	Cover up center console using a dry cloth (4)		
6	Remove bolts (2)		
7	Open lid (3)		
8	Apply extraction hook at denoted areas (arrows), release AAC control and operating unit (N22/7) by pulling upwards and remove, until the electrical connectors (5) are accessible	☒	*140589023300
9	Disconnect electrical connectors (5)		
10	Install in the reverse order		
AD	<p>11 Teach in and normalize the actuator motors</p> <p>Connect STAR DIAGNOSIS and read out fault memory</p>	<p><b>i</b> The actuator motor is taught in via STAR DIAGNOSIS.</p>	AD00.00-P-2000-04A



140 589 02 33 00

Pulling hook