

Document number: pe46.10-p-2101-97daa

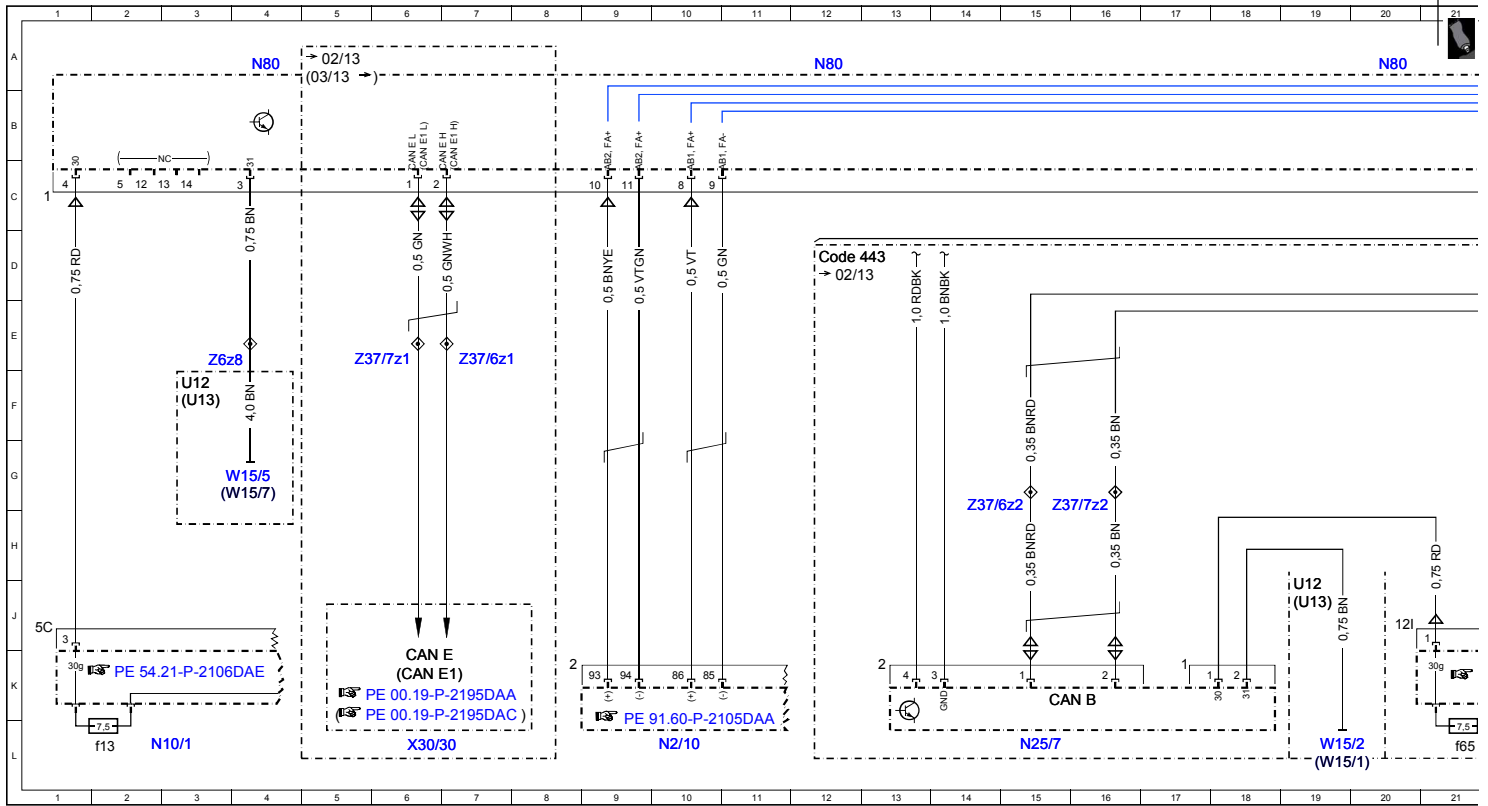
Document title: Wiring diagram for steering column module control unit

Code:	Designation:	Position:
A0	Color code key	72L
A45	Fanfare horns and airbag clock spring contact	45D
A45	Fanfare horns and airbag clock spring contact	34D
A45	Fanfare horns and airbag clock spring contact	52D
A45	Fanfare horns and airbag clock spring contact	57D
CAN B	Interior CAN	15K
CAN B	Interior CAN	25K
CAN E	Chassis CAN	6K
CAN E1	Chassis CAN 1	6K
Code 238	Active Lane Keeping Assist	47H
Code 238	Active Lane Keeping Assist	28D
Code 428	Steering wheel shift paddles	50H
Code 443	Steering wheel heater	34H
Code 443	Steering wheel heater	12D
Code 443	Steering wheel heater	28D
Code 476	Automatic lane detection	28E
Code 476	Automatic lane detection	47H
M99	Steering wheel vibration motor	49L
N10/1	Front SAM control unit with fuse and relay module	2L
N10/1	Front SAM control unit with fuse and relay module	25L
N10/1f13	Fuse 13	2L
N10/2	Rear SAM control unit with fuse and relay module	22L
N10/2	Rear SAM control unit with fuse and relay module	30L
N10/2f65	Fuse 65	21L
N10/2f65	Fuse 65	29L
N135	Steering wheel electronics	45F
N135	Steering wheel electronics	52F
N135	Steering wheel electronics	34F
N135s1	Left fanfare horn system button	44L
N135s2	Right fanfare horn system button	45L
N135s3	Center horns button	46L
N2/10	Supplemental restraint system control unit	10L
N25/7	Steering wheel heater control unit	15L
N49	Steering angle sensor	64B
N80	Steering column module control unit	4A
N80	Steering column module control unit	45A
N80	Steering column module control unit	61A
N80	Steering column module control unit	12A
N80	Steering column module control unit	20A
N80	Steering column module control unit	53A
N80	Steering column module control unit	28A
N80	Steering column module control unit	36A
N80	Steering column module control unit	71A
R12/13	Driver airbag squib 1	54L
R12/14	Driver airbag squib 2	55L
R22/4	Steering wheel heater	36L
R22/4	Steering wheel heater	37L
R22/4b1	Heating element temperature sensor	37L
R22/4r1	Steering wheel heater heating element	36L
S110	Left multifunction steering wheel button group	39L
S110/1	Steering wheel downshift button	53L
S110s1	Scroll forward/back button	39L
S110s3	System selection button	40L
S110s4	"Back" and voice control system OFF button	40L
S110s6	OK button	41L
S111	Right multifunction steering wheel button group	43L
S111/1	Steering wheel upshift button	52L

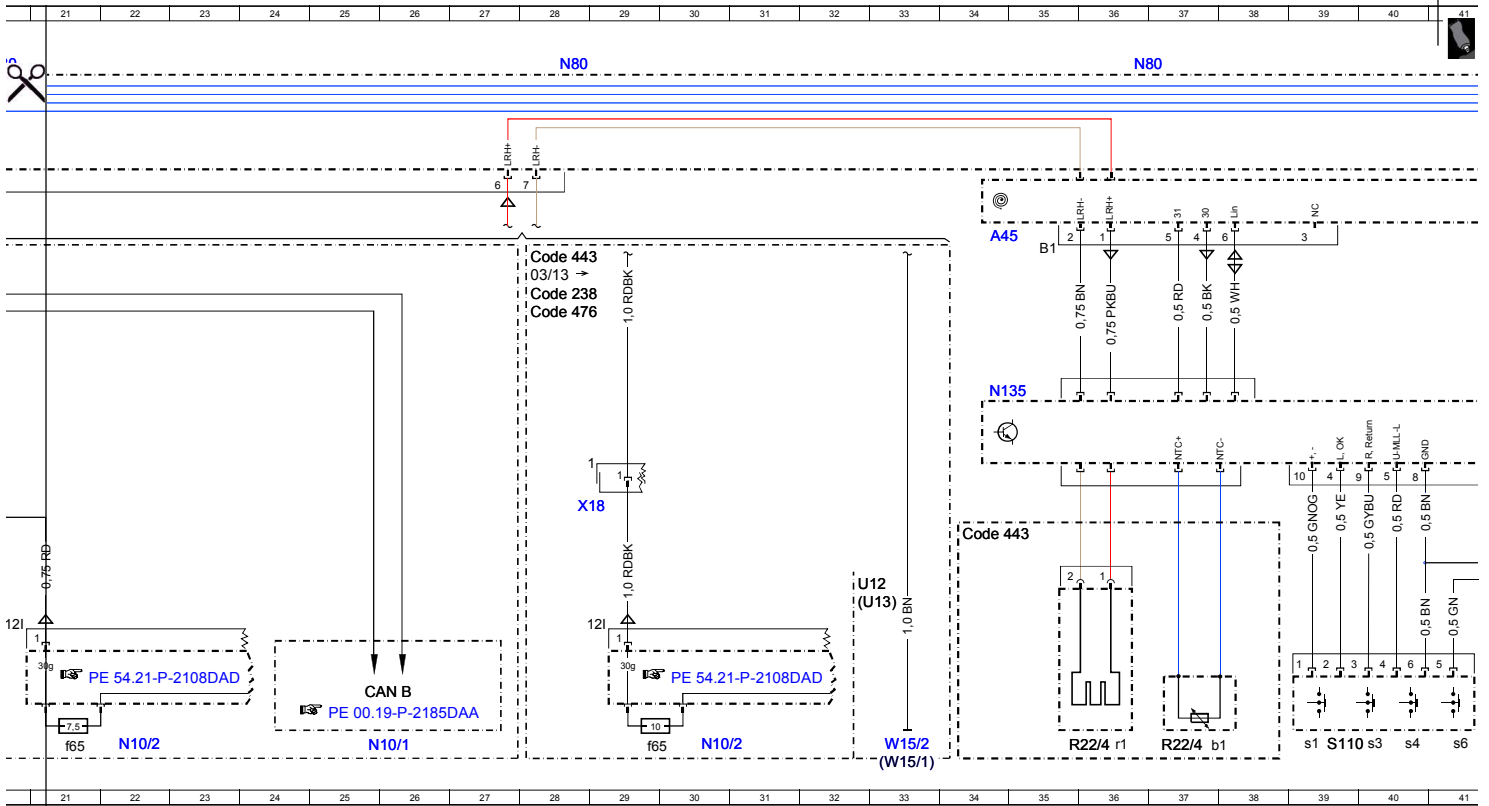
Document number: pe46.10-p-2101-97daa

Document title: Wiring diagram for steering column module control unit

Code:	Designation:	Position:
S111s1	Buttons + and - for setting specific functions and volume control	42L
S111s3	Accept/terminate phone call button	42L
S111s4	Voice control system ON button	43L
S111s6	Mute function button	44L
S16/13	DIRECT SELECT lever	71B
S4	Combination switch	58B
S40/4	Cruise control lever	67B
S40/4r1	DISTRONIC control	69B
S40/4s1	Resume from memory switch	66B
S40/4s2	Decelerate and set switch	66B
S40/4s3	Accelerate and set switch	66B
S40/4s4	OFF switch	67B
S40/4s5	Indicator switch	67B
S40/4s6	SPEEDTRONIC switch	68B
S40/4v1	SPEEDTRONIC light emitting diode	68B
S4s1	Turn signal lamps switch	57B
S4s2	Headlamp flasher/high beam switch	58B
S4s3	Low beam switch	58B
S4s4	Windshield washer system switch	59B
S4s5	Wipe switch	59B
S59/1	Steering column adjustment and steering wheel heater switch	61B
S59/1e1	Steering wheel heater indicator lamp	61B
S59/1s1	Steering column adjustment switch	60B
S59/1s2	Steering wheel heater switch	62B
U12	Valid for left-hand drive vehicles	3F
U12	Valid for left-hand drive vehicles	19J
U12	Valid for left-hand drive vehicles	32J
U13	Valid for right-hand drive vehicles	3F
U13	Valid for right-hand drive vehicles	19J
U13	Valid for right-hand drive vehicles	32J
U2	Valid for all except USA	68A
U504	Valid for DISTRONIC	69A
U744	Valid for steering wheel heater	61A
U897	Valid for intelligent servo module for DIRECT SELECT	70A
W15/1	Right footwell ground point	19L
W15/1	Right footwell ground point	33L
W15/2	Left footwell ground point	19L
W15/2	Left footwell ground point	33L
W15/5	Left front footwell ground point	4G
W15/7	Right front footwell ground point	4G
X18	Vehicle interior and harness for taillamp electrical connector	29H
X30/30	Vehicle floor chassis CAN voltage distributor electrical connector	6L
Z37/6z1	CAN bus high connector sleeve	7E
Z37/6z2	CAN bus high connector sleeve	14G
Z37/7z1	CAN bus low connector sleeve	6E
Z37/7z2	CAN bus low connector sleeve	16G
Z6z8	Circuit 31 connector sleeve	3E

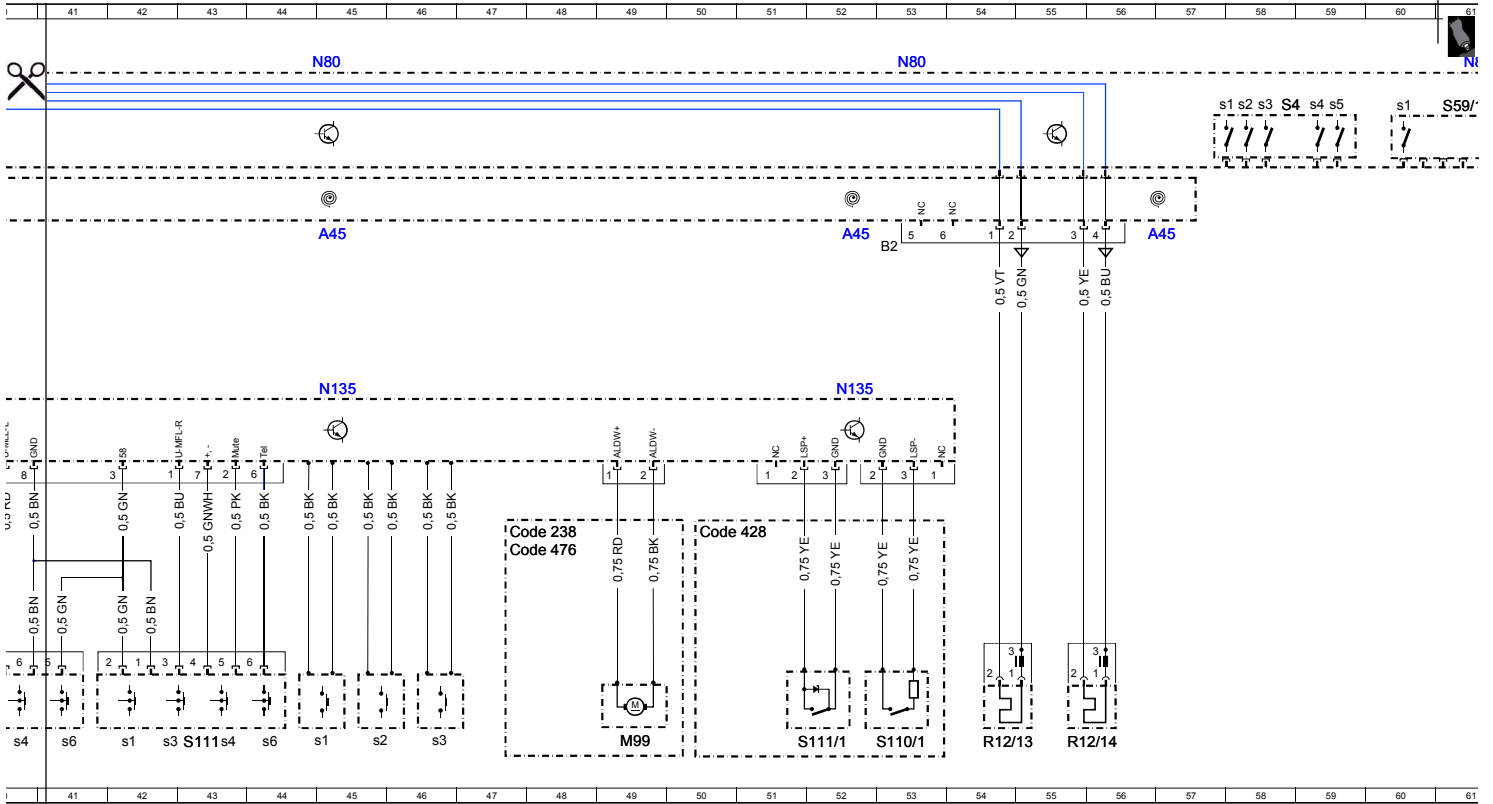


▼ Affix page 2 here ▼



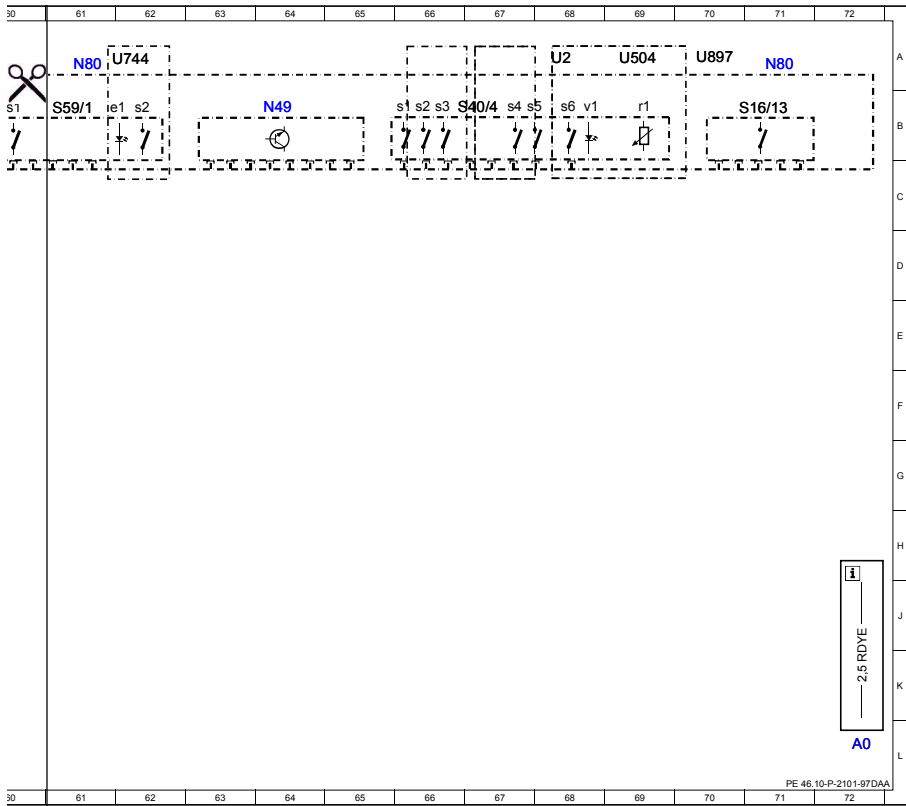
Cut here

▼ Affix page 3 here ▼



Cut here

▼ Affix page 4 here ▼



PE 46.10-P-2101-97DAA

Cut here