

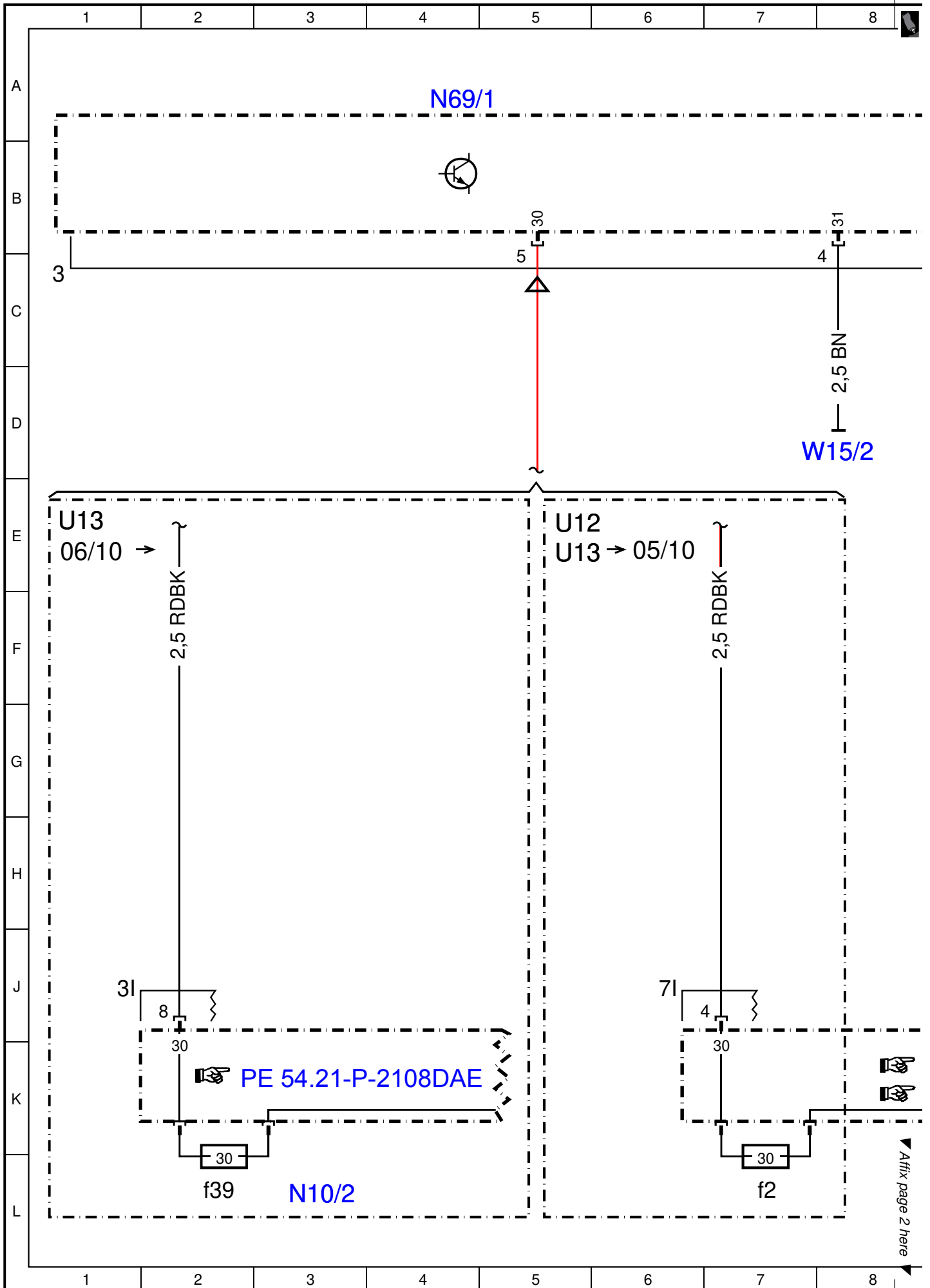
Document number: pe72.29-p-2101-97daa

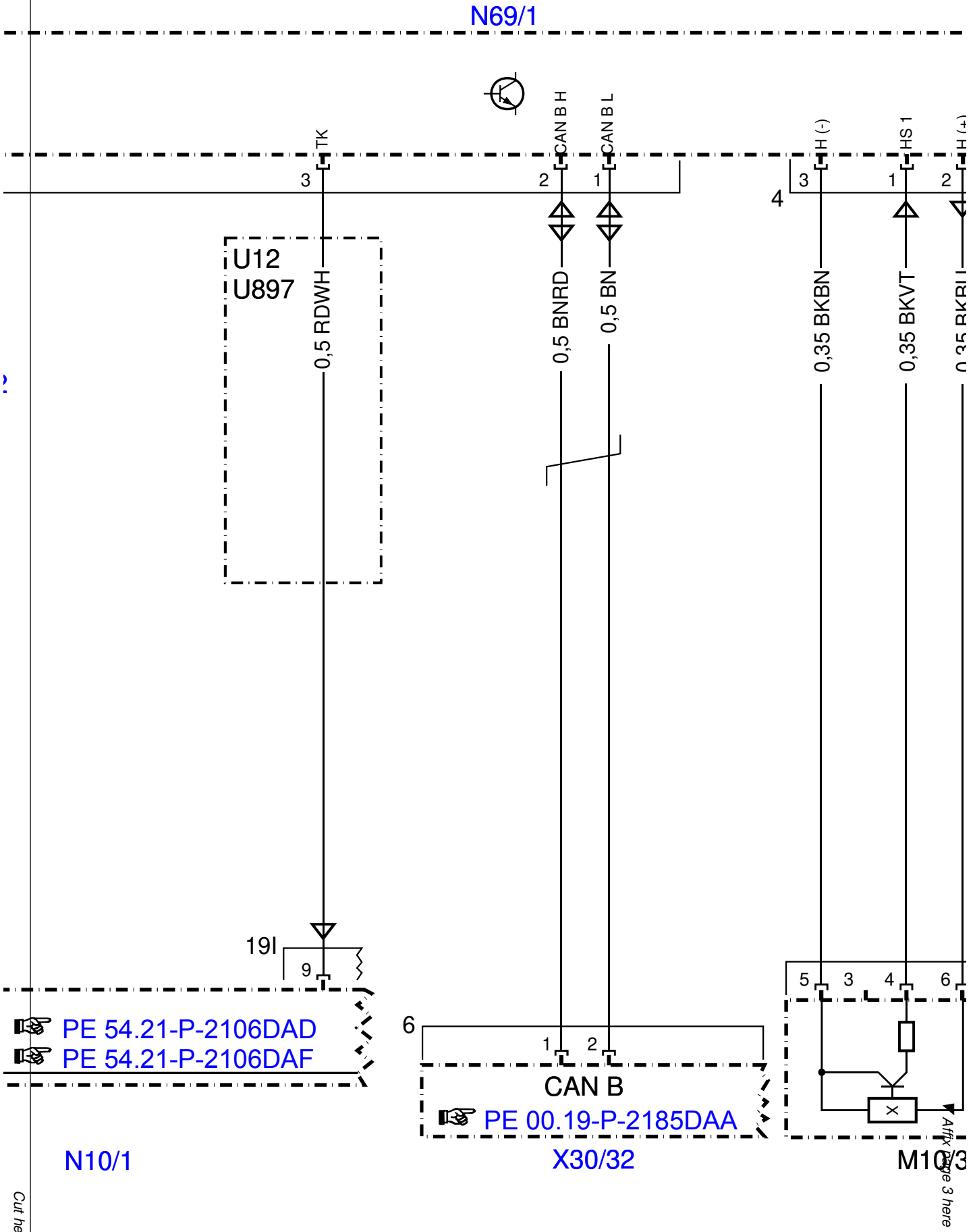
Document title: Wiring diagram for left front door control unit

| Code: | Designation: | Position: |
|--------------|-------------------------------------------------------------------------|------------------|
| A0 | Color code key | 72L |
| A26/1 | Driver-side front door infrared remote control receiver | 27L |
| A85 | Left front door lock | 23L |
| A85 | Left front door lock | 20L |
| A85m1 | Left front door central locking motor | 22L |
| A85m1 | Left front door central locking motor | 19L |
| A85m4 | Left front door additional door lock actuator motor | 25L |
| A85s1 | Left front door rotary tumbler switch | 23L |
| A85s1 | Left front door rotary tumbler switch | 20L |
| CAN B | Interior CAN | 13K |
| Code 889 | KEYLESS-GO | 18E |
| E17/11 | Left front door door handle illumination | 46L |
| E17/3 | Left front door exit and warning lamp | 47L |
| E17/43 | Left front door ambiance illumination | 49L |
| E17/43 | Left front door ambiance illumination | 51L |
| E6/5 | Left outside mirror turn signal lamp | 55L |
| E6/5x1 | Left outside mirror turn signal lamp electrical connector | 54H |
| LIN B5 | Left front door LIN | 28B |
| LIN B5 | Left front door LIN | 52B |
| M10/3 | Left front door power window motor | 16L |
| M21/1 | Left outside mirror | 58L |
| M21/1e1 | Left outside mirror ambient lamp | 69L |
| M21/1e2 | Left Blind Spot Assist readiness and warning indicator | 67L |
| M21/1e2x1 | Blind Spot Assist warning lamp/left mirror dimming electrical connector | 64H |
| M21/1h1 | Automatic dimming mirror | 63L |
| M21/1h1 | Automatic dimming mirror | 65L |
| M21/1h1x1 | Mirror dimming electrical connector | 62H |
| M21/1m1 | Vertical inclination adjustment actuator motor | 58K |
| M21/1m2 | Horizontal inclination adjustment actuator motor | 58K |
| M21/1m3 | Outside mirror fold-in/fold-out electric motor | 61L |
| M21/1r1 | Mirror heater | 56L |
| M21/1r2 | Vertical inclination adjustment potentiometer | 59K |
| M21/1r3 | Horizontal inclination adjustment potentiometer | 59K |
| N10/1 | Front SAM control unit with fuse and relay module | 9L |
| N10/1f2 | Fuse 2 | 7L |
| N10/2 | Rear SAM control unit with fuse and relay module | 3L |
| N10/2f39 | Fuse 39 | 2L |
| N69/1 | Left front door control unit | 12A |
| N69/1 | Left front door control unit | 19A |
| N69/1 | Left front door control unit | 28A |
| N69/1 | Left front door control unit | 37A |
| N69/1 | Left front door control unit | 45A |
| N69/1 | Left front door control unit | 54A |
| N69/1 | Left front door control unit | 62A |
| N69/1 | Left front door control unit | 70A |
| N69/1 | Left front door control unit | 4A |
| S15/1 | Trunk lid release button | 40L |
| S15/3 | Driver trunk lid/liftgate control button | 40L |
| S20 | Driver-side power window and outside mirror adjustment switch group | 32L |
| S20s1 | Left front power window switch | 28L |
| S20s10 | Left outside mirror adjustment switch | 35L |
| S20s11 | Right outside mirror adjustment switch | 36L |
| S20s12 | Outside mirror adjustment switch | 33L |
| S20s2 | Right front power window switch | 29L |
| S20s3 | Left rear power window switch | 31L |
| S20s4 | Right rear power window switch | 32L |
| S20s5 | Rear side window child safety lock switch | 30L |

Document number: pe72.29-p-2101-97daa
Document title: Wiring diagram for left front door control unit

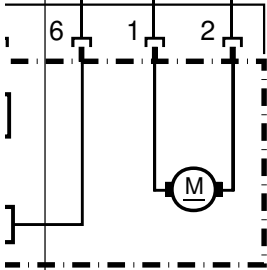
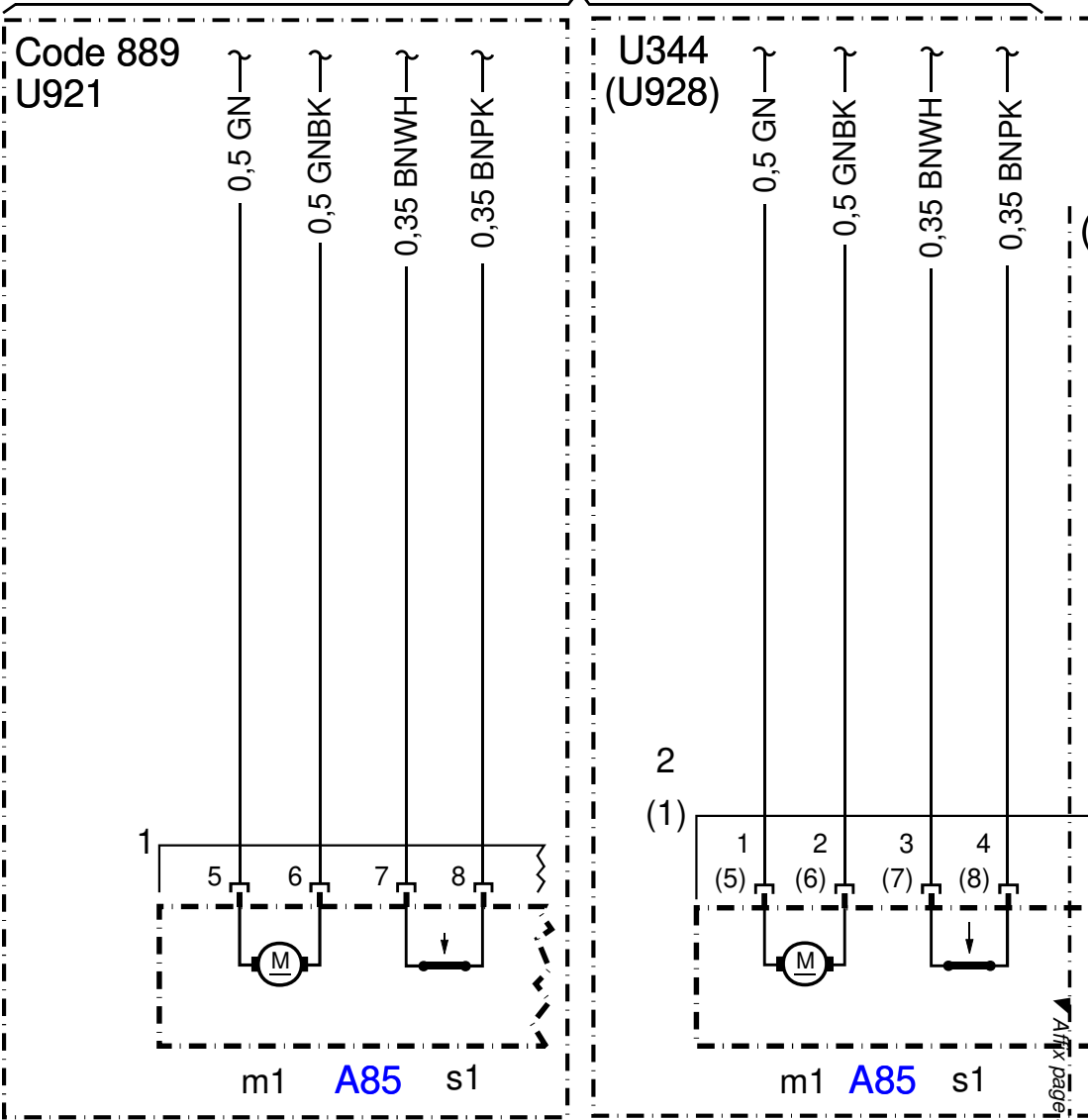
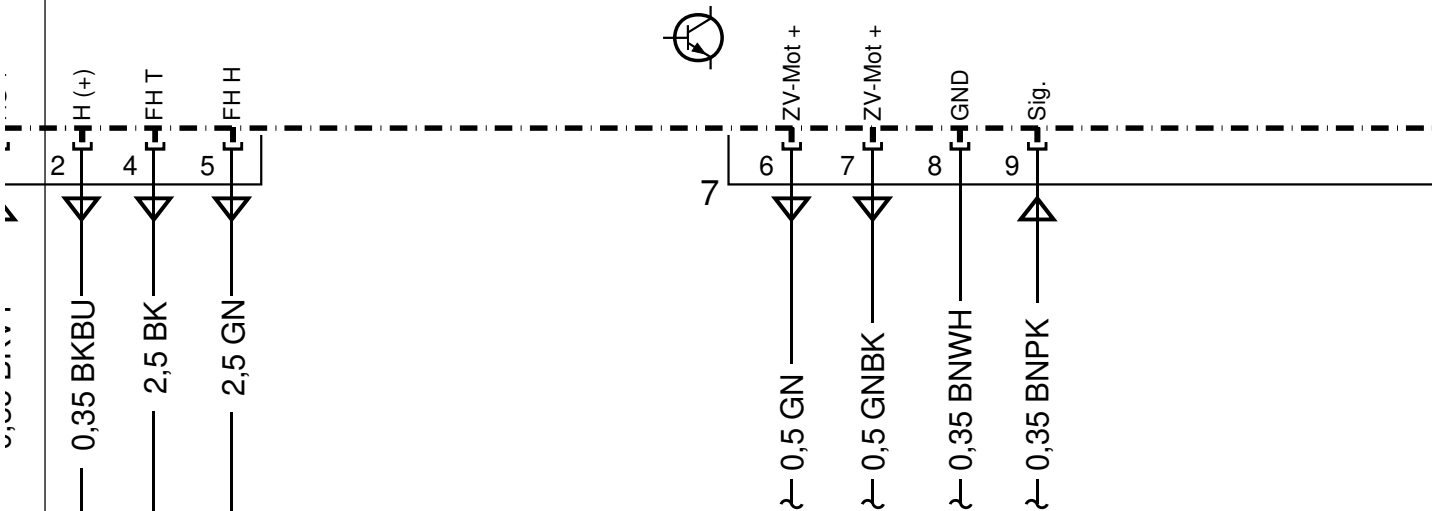
| Code: | Designation: | Position: |
|--------------|--------------------------------------------------------------------------|------------------|
| S20s9 | Outside mirror fold-in/fold-out switch | 34L |
| S21/2 | Passenger-side power window switch | 43L |
| S22 | Left front seat adjustment switch group | 53L |
| S85/5 | Left front door central locking interior switch | 38L |
| U12 | Valid for left-hand drive vehicles | 26E |
| U12 | Valid for left-hand drive vehicles | 62E |
| U12 | Valid for left-hand drive vehicles | 64E |
| U12 | Valid for left-hand drive vehicles | 5E |
| U12 | Valid for left-hand drive vehicles | 10C |
| U12 | Valid for left-hand drive vehicles | 39E |
| U13 | Valid for right-hand drive vehicles | 42E |
| U13 | Valid for right-hand drive vehicles | 1E |
| U13 | Valid for right-hand drive vehicles | 5E |
| U144 | Valid for outside mirror fold-in/out function | 34J |
| U144 | Valid for outside mirror fold-in/out function | 60E |
| U344 | Valid for all except KEYLESS GO | 21E |
| U416 | Valid for one-color ambiance illumination | 48A |
| U417 | Valid for three-color ambiance illumination | 50A |
| U57 | Valid for model 212.2 | 39E |
| U58 | Valid for model 212.0/1 | 39E |
| U71 | Valid for fully electric seat adjustment with memory function | 52E |
| U71 | Valid for fully electric seat adjustment with memory function | 58E |
| U76 | Valid for automatic dimming mirror | 62E |
| U76 | Valid for automatic dimming mirror | 64E |
| U897 | Valid for intelligent servo module for DIRECT SELECT | 10D |
| U910 | Valid for Blind Spot Assist | 64E |
| U921 | Not valid for England | 18E |
| U928 | Valid for England | 24F |
| U928 | Valid for England | 21E |
| U951 | Valid for ambient lamps | 68E |
| W15/2 | Left footwell ground point | 8D |
| X30/32 | Left vehicle floor interior CAN voltage distributor electrical connector | 13L |







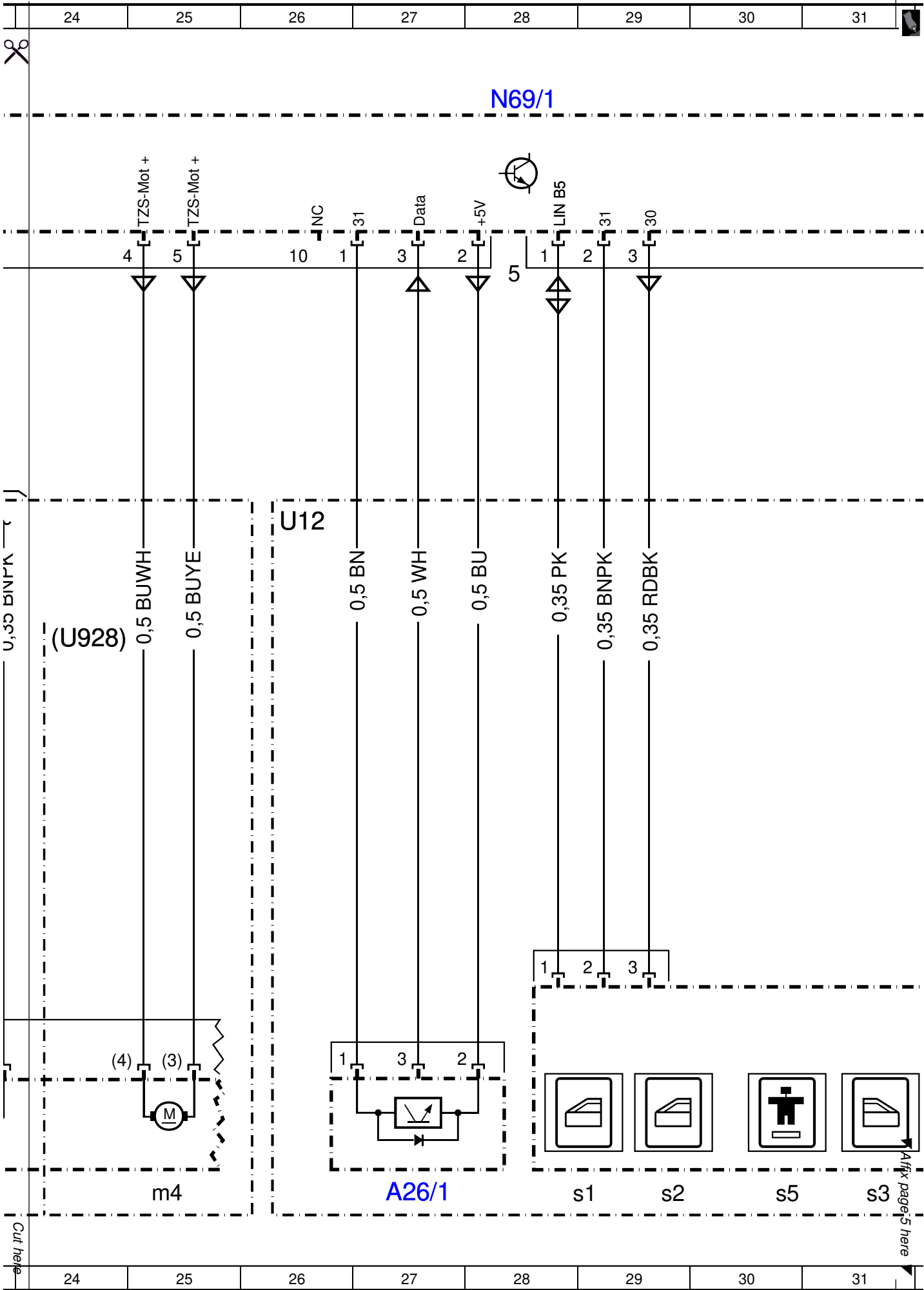
N69/1



110/3

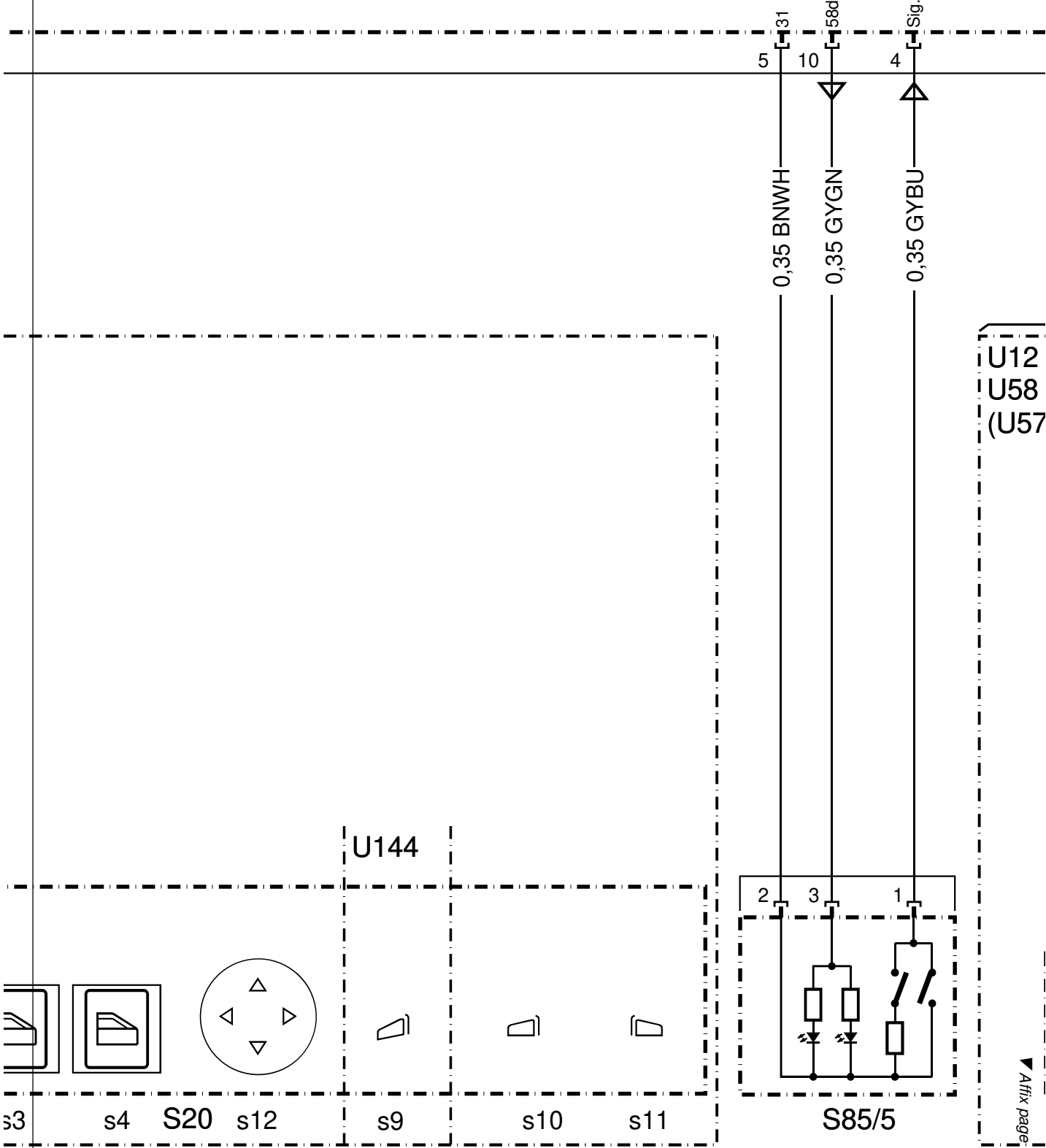
Cut here

Fix page 4 here





N69/1

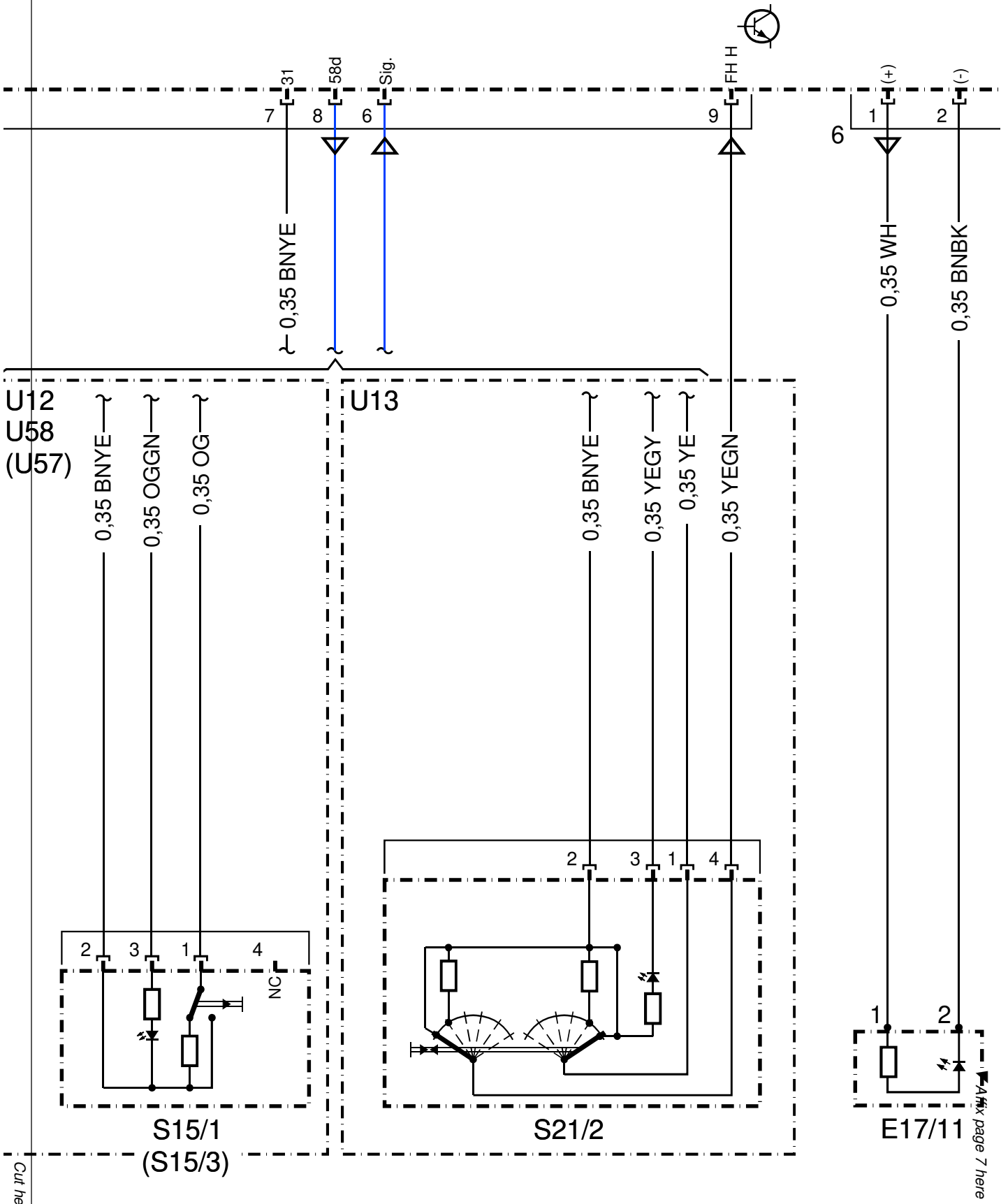


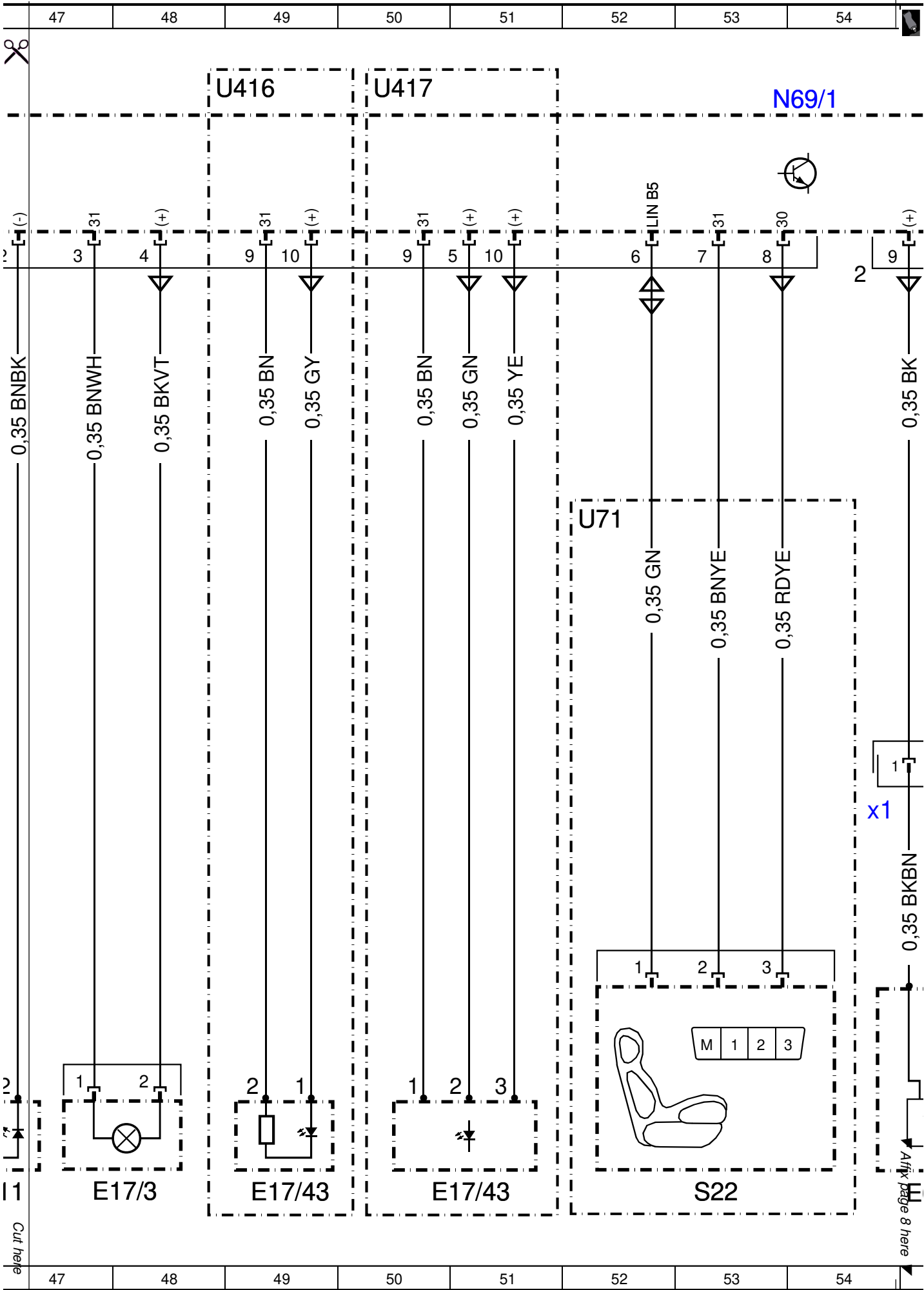
Cut here

▲ Affix page 6 here



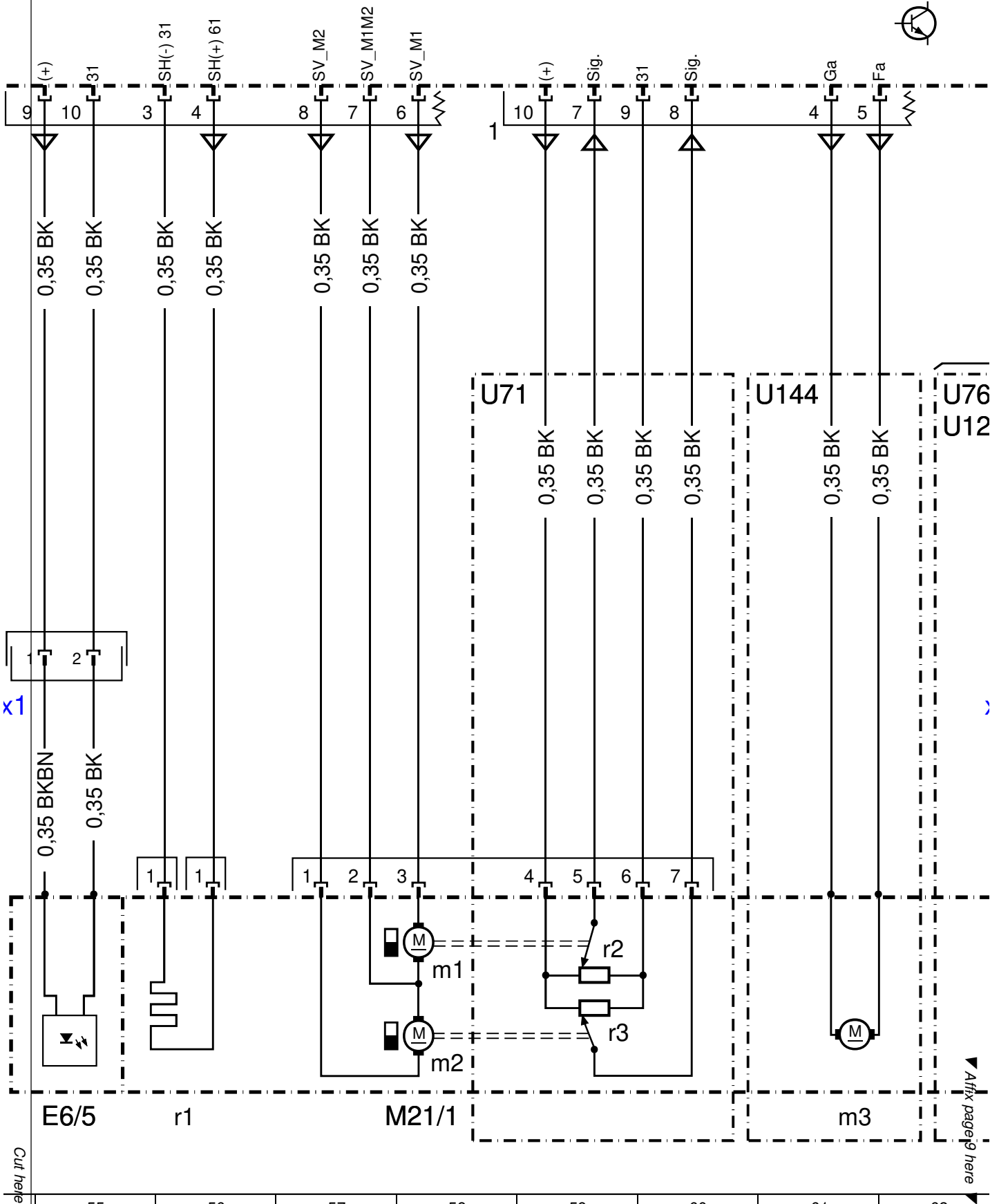
N69/1







N69/1



Cut here

Affix page 9 here

