

Document number: pe82.85-p-2101-97dad

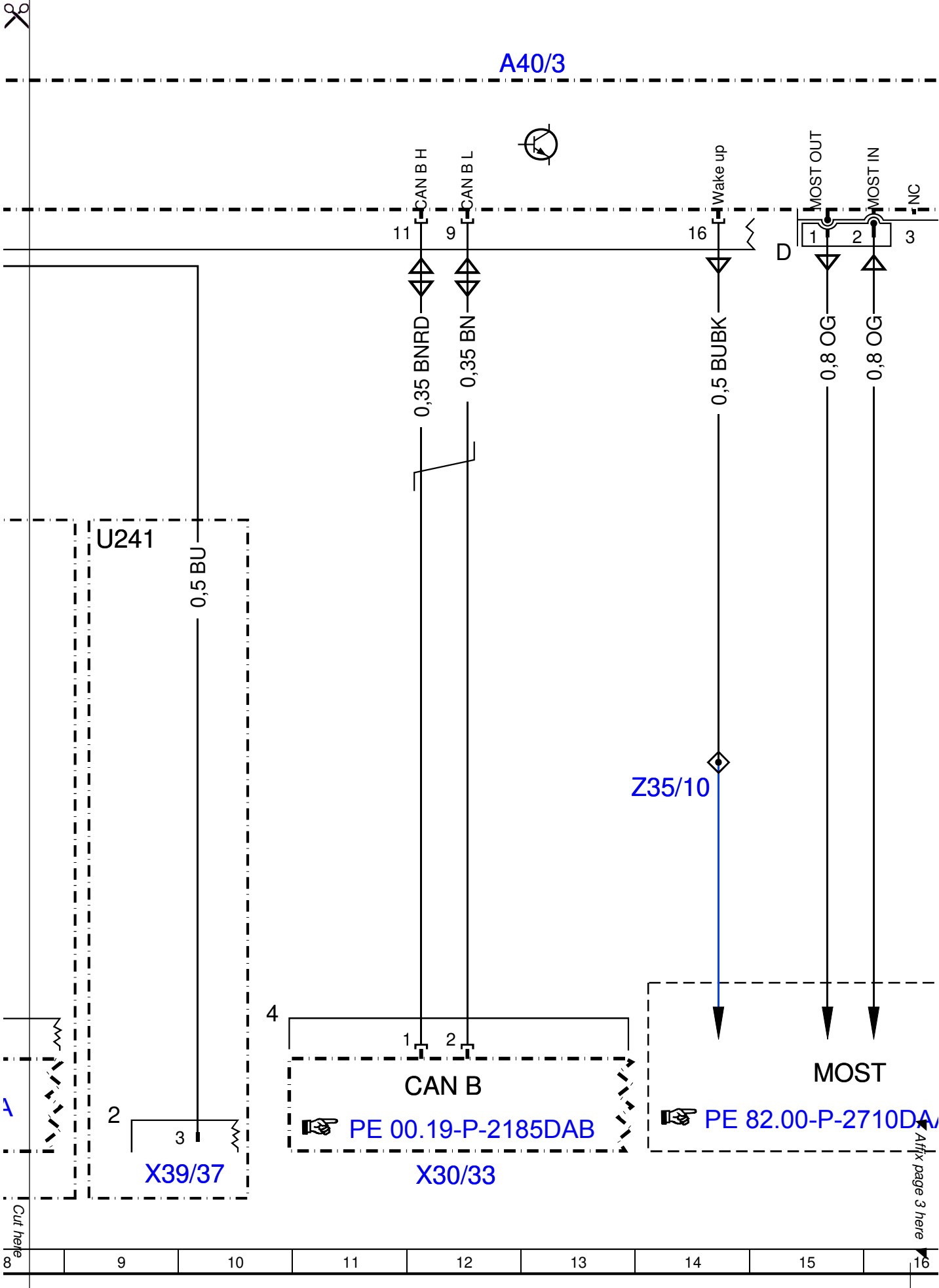
Document title: Cockpit Management and Data System (COMAND) control unit wiring diagram

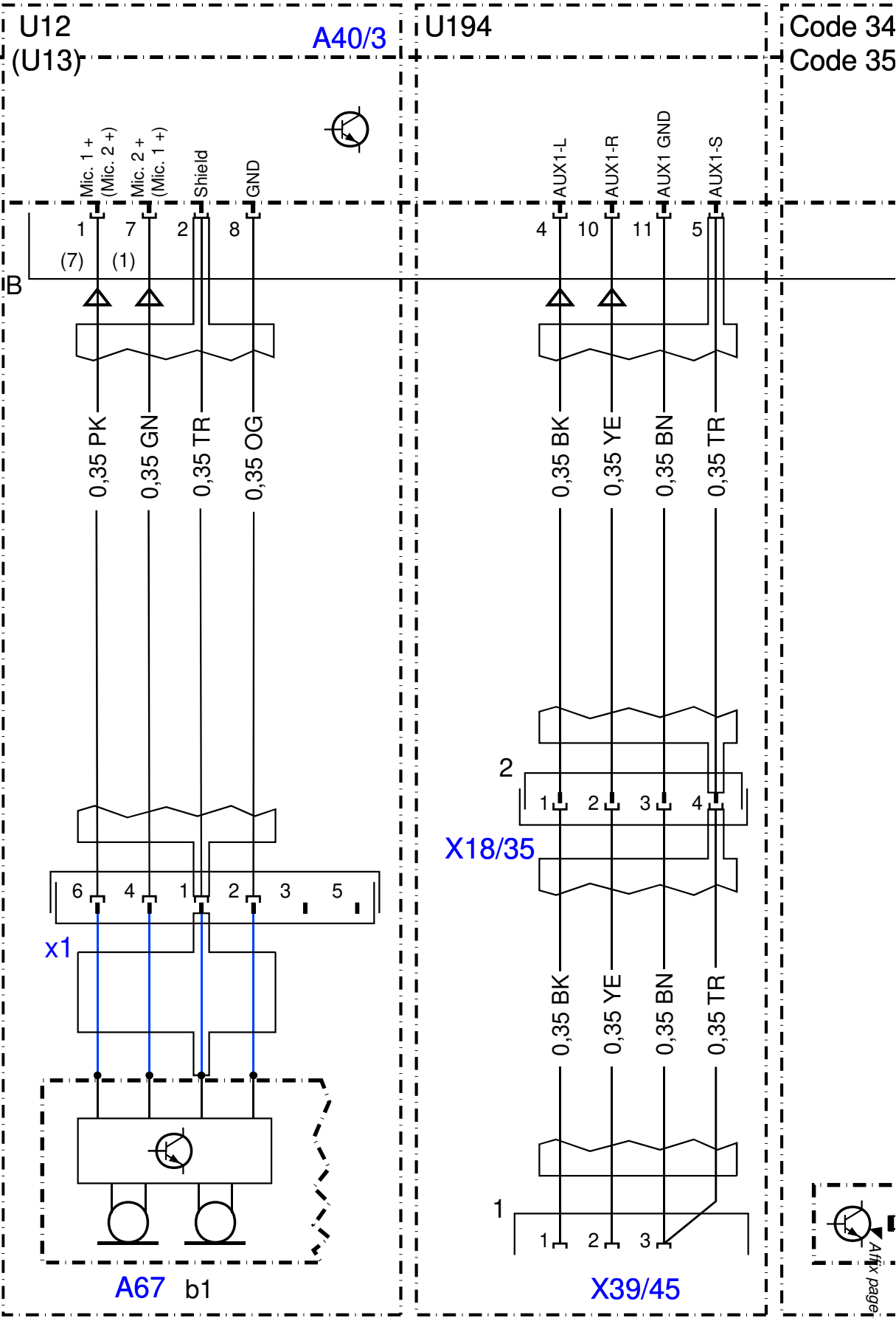
Code:	Designation:	Position:
A0	Color code key	80L
A2/18	FM 1, AM, CL [ZV] and KEYLESS GO antenna amplifier	44L
A2/18	FM 1, AM, CL [ZV] and KEYLESS GO antenna amplifier	47L
A2/19	FM 2 and DAB antenna amplifier	42L
A2/19	FM 2 and DAB antenna amplifier	45L
A2/37	VICS control unit	73L
A2/91	Bluetooth antenna	54L
A2/91x1	Bluetooth antenna electrical connector	54H
A2/94	ETC/DSRC antenna	70L
A28/11	Multifunction antenna	56L
A28/3	Cellular telephone system antenna amplifier/compensator	7L
A40/3	COMAND control unit	4A
A40/3	COMAND control unit	12A
A40/3	COMAND control unit	27A
A40/3	COMAND control unit	56A
A40/3	COMAND control unit	61A
A40/3	COMAND control unit	44A
A40/3	COMAND control unit	36A
A40/3	COMAND control unit	19A
A40/3	COMAND control unit	53A
A40/3	COMAND control unit	68A
A40/3	COMAND control unit	77A
A40/3f1	COMAND electrical fuse	2B
A40/8	Audio/COMAND display	39L
A50/3	Electronic Toll Collection control unit	67L
A50/6	Dedicated Short-Range Communications control unit	67L
A67	Inside rearview mirror	18L
A67b1	Hands-free system microphone	18L
A67b1x1	Hands-free system and voice control microphone electrical connector	17H
A90/1	TV tuner (analog/digital)	51L
A90/3	TV digital tuner	51L
CAN A	Telematics CAN	29K
CAN B	Interior CAN	12K
Code 348	Emergency call/assistance system	23A
Code 359	TELEAID emergency call system	23A
Code 863	Digital/analog TV tuner	48E
Code 865	TV tuner (digital)	48E
Code 867	SPLITVIEW	33D
F11/1	Cockpit fuse block	64D
M4/13	COMAND fan motor	31L
MOST	Media Oriented System Transport	15K
N10/1	Front SAM control unit with fuse and relay module	3L
N10/1f26	Fuse 26	2L
N10/2	Rear SAM control unit with fuse and relay module	60L
N10/2f83	Fuse 83	59L
N123/4	Emergency call system control unit	25L
U12	Valid for left-hand drive vehicles	17A
U12	Valid for left-hand drive vehicles	62H
U13	Valid for right-hand drive vehicles	17A
U13	Valid for right-hand drive vehicles	62J
U135	Valid for Electronic Toll Collection	57A
U136	Valid for Vehicle Information and Communication System (VICS)	71A
U194	Valid for AUX jack	20A
U241	Valid for comfort telephony without compensator	9E
U52	Valid for Japan	57A
U52	Valid for Japan	71A
U57	Valid for model 212.2	45E

Document number: pe82.85-p-2101-97dad

Document title: Cockpit Management and Data System (COMAND) control unit wiring diagram

Code:	Designation:	Position:
U58	Valid for model 212.0/1	42E
U777	Valid for navigation	55A
U944	Valid for comfort telephony with compensator	5E
W15/5	Left front footwell ground point	62L
W15/7	Right front footwell ground point	62L
W19	Right front seat crossmember ground point	3E
X115	USB electrical connector	40F
X120	Radio fan electrical connector	30F
X137/1	VICS and Electronic Toll Collection power supply electrical connector	63H
X137/1	VICS and Electronic Toll Collection power supply electrical connector	65H
X137/1	VICS and Electronic Toll Collection power supply electrical connector	71H
X18/35	Instrument panel and vehicle floor electrical connector	21H
X18/35	Instrument panel and vehicle floor electrical connector	58E
X30/33	Right vehicle floor interior CAN voltage distributor electrical connector	12L
X30/35	Telematics CAN voltage distributor electrical connector	29L
X39/37	Mobile phone electrical connector	5G
X39/37	Mobile phone electrical connector	9L
X39/45	AUX jack electrical connector	22L
X39/6	Headphones electrical connector (cabled)	35F
X8/46	Right vehicle interior and tailgate electrical connector	45G
Z3/12	Circuit 15R connector sleeve	58H
Z35/10	MOST wake-up signal connector sleeve	14H
Z37/6z3	CAN bus high connector sleeve	28H
Z37/7z3	CAN bus low connector sleeve	29H
Z6z2	Circuit 31 connector sleeve	62H
Z83/11z2	Screening end connector sleeve	52H
Z83/11z3	Screening end connector sleeve	51H

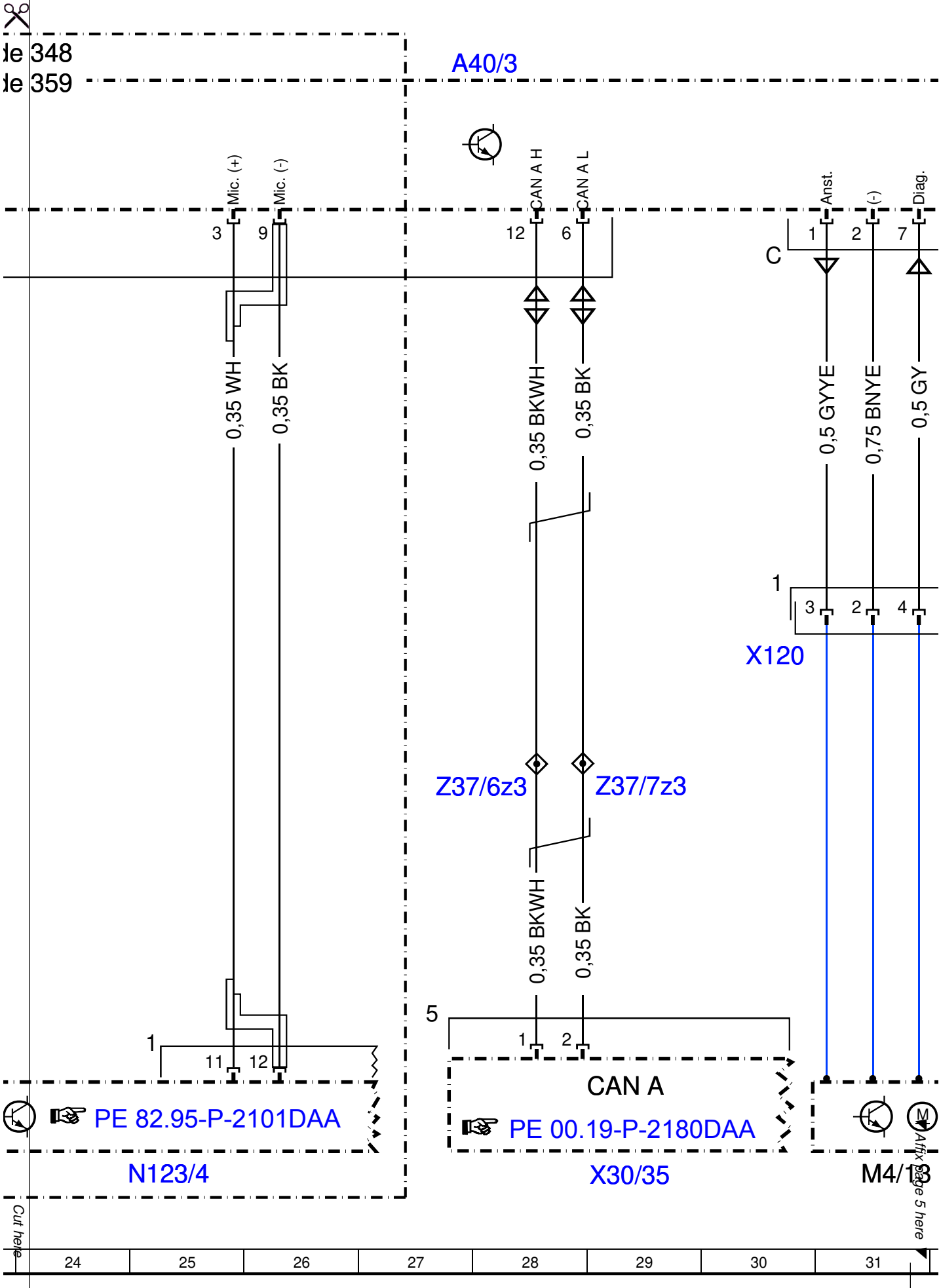




ODAA

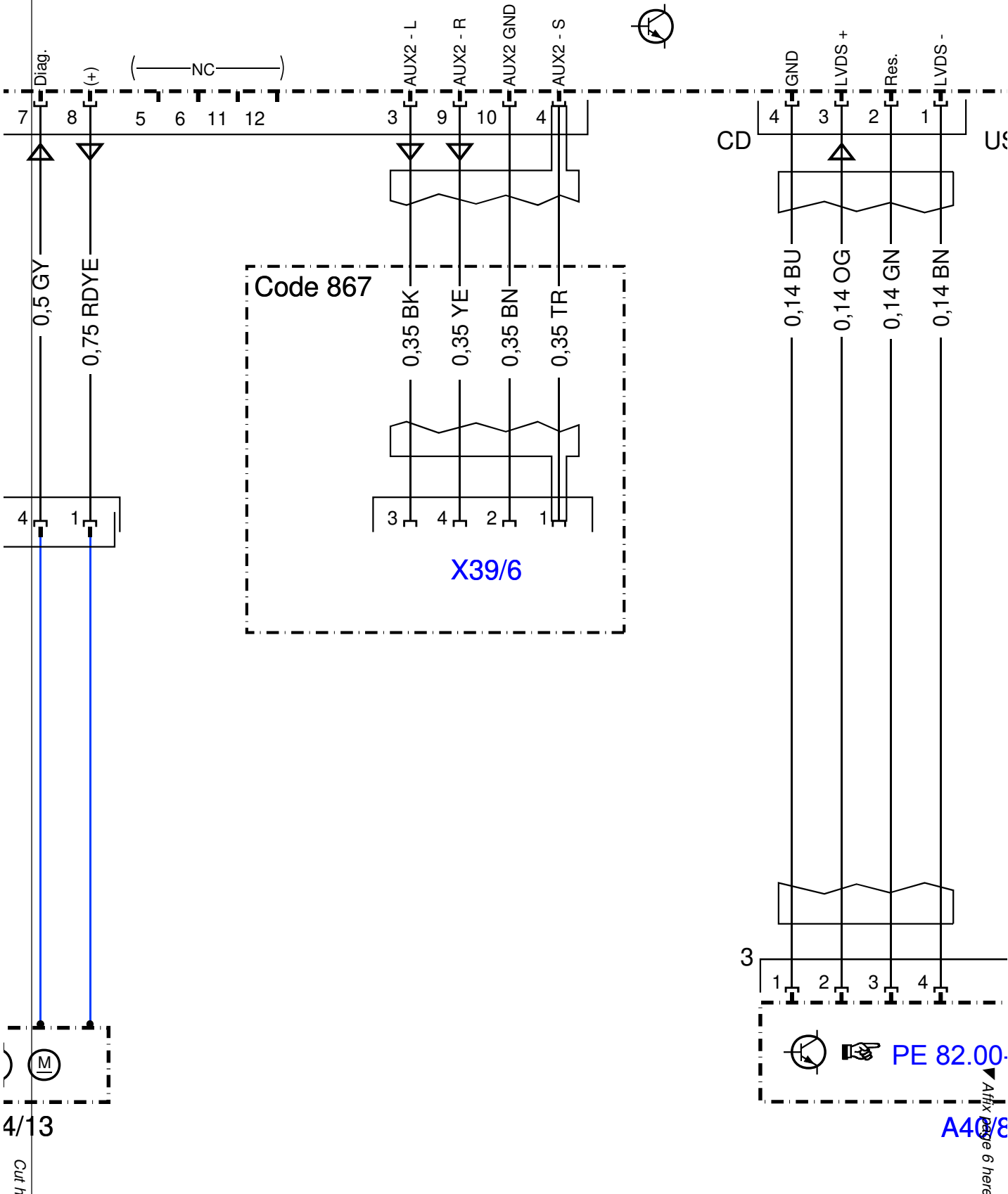
Cut here

Affix page 4 here





A40/3



4/13

PE 82.00

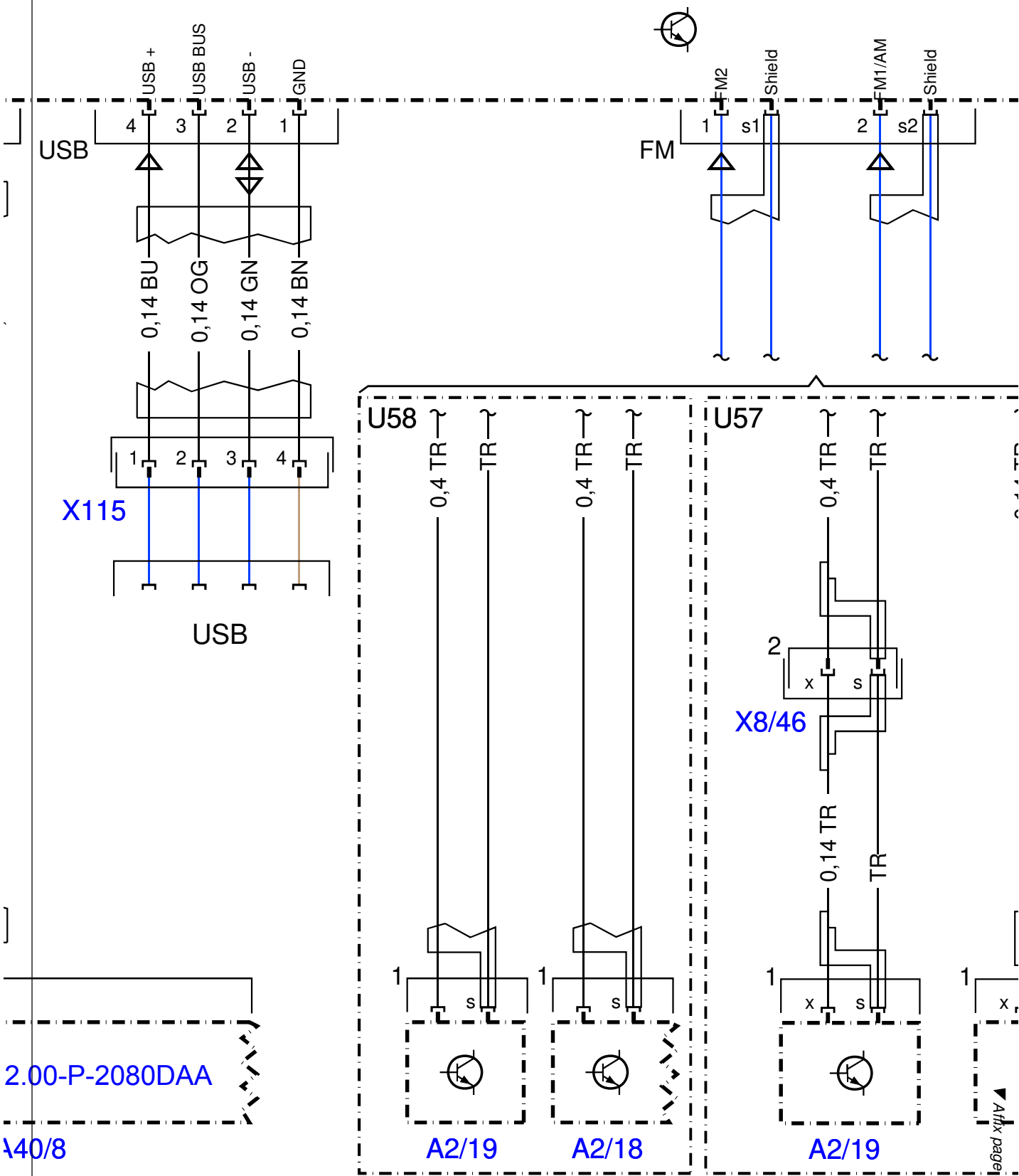
A40/3

Cut here

Affix page 6 here

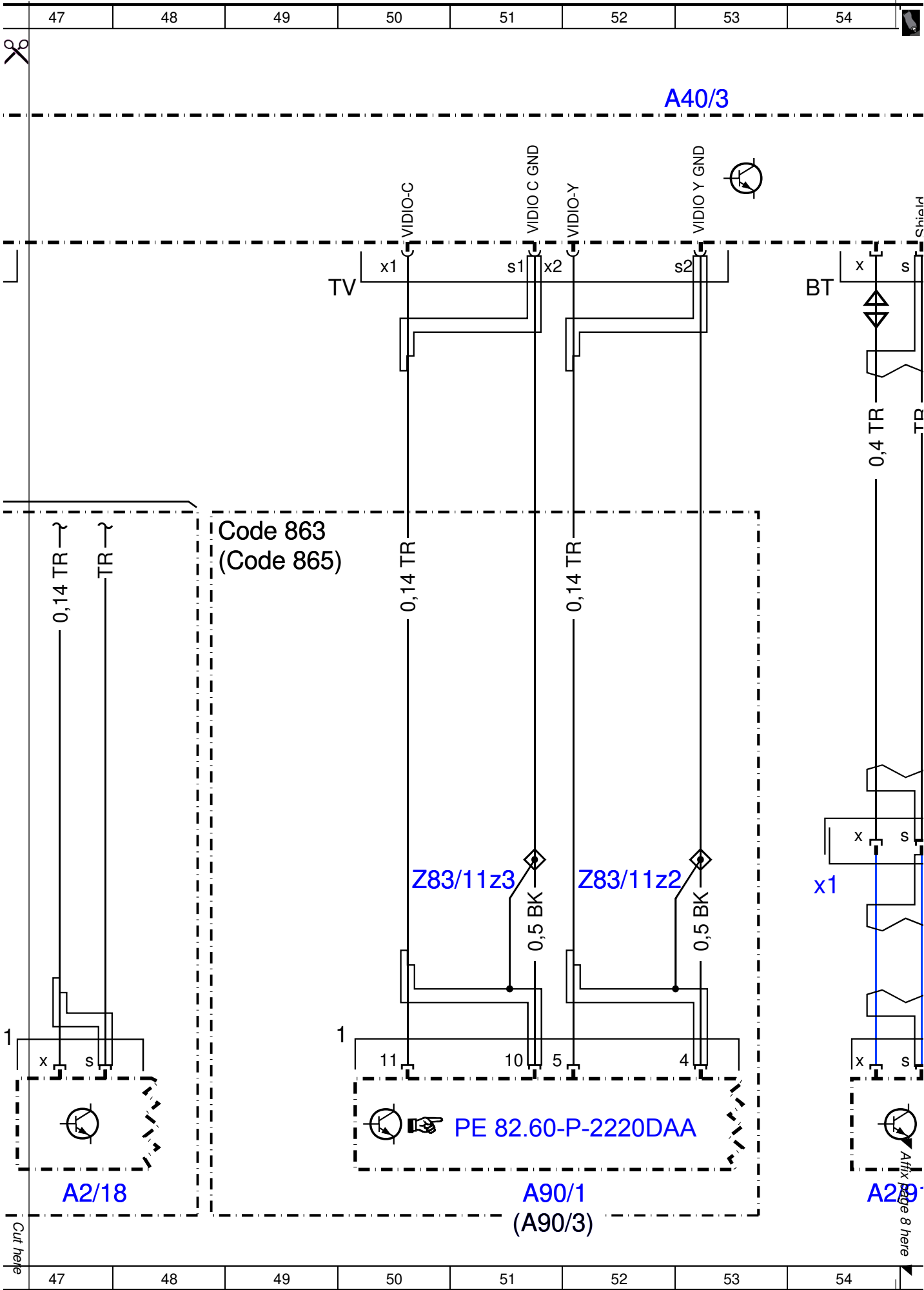


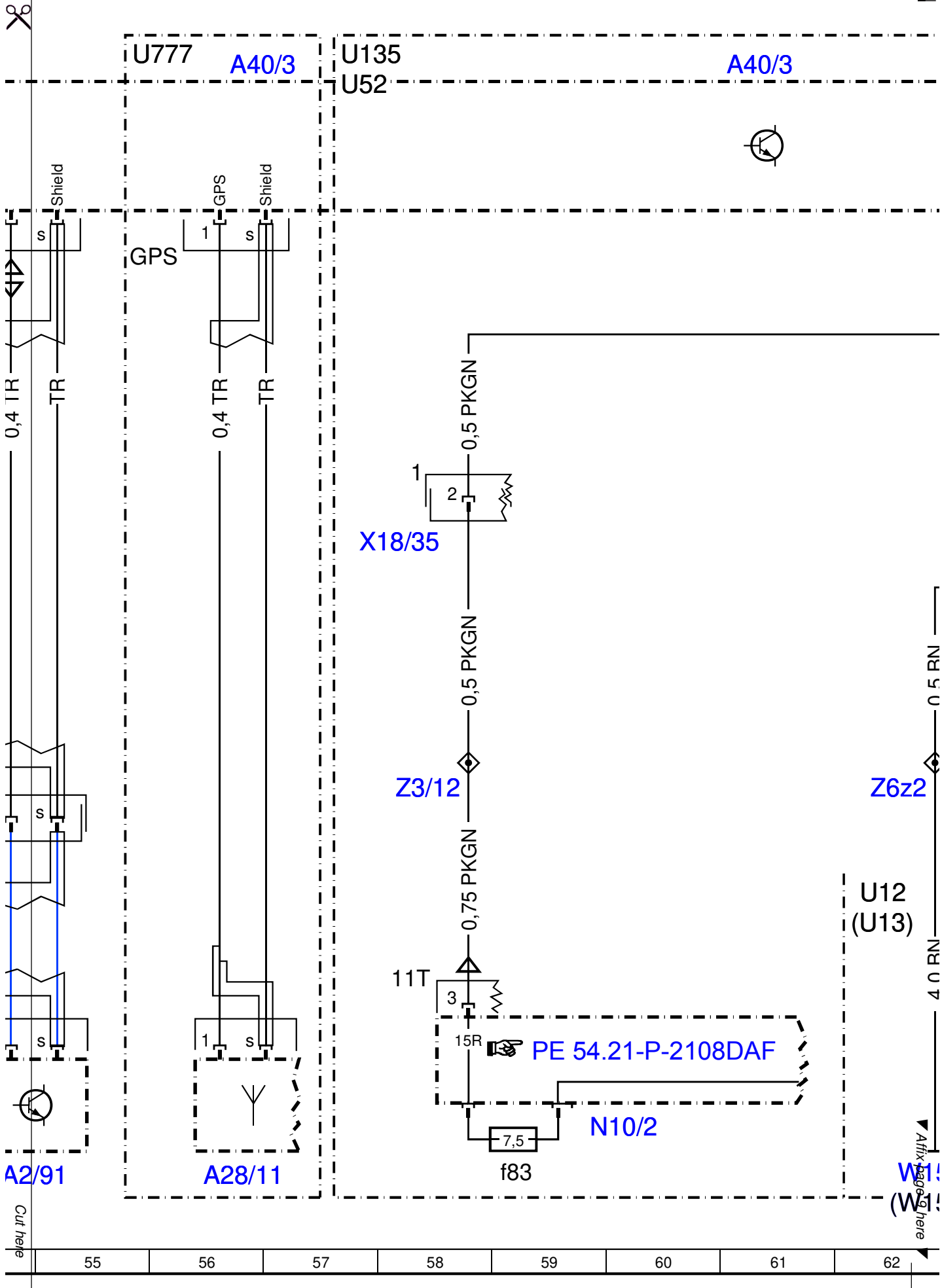
A40/3



Cut here

Attach page 7 here





A2/91

A28/11

X18/35

Z3/12

Z6z2

U12 (U13)

PE 54.21-P-2108DAF

N10/2

f83

11T

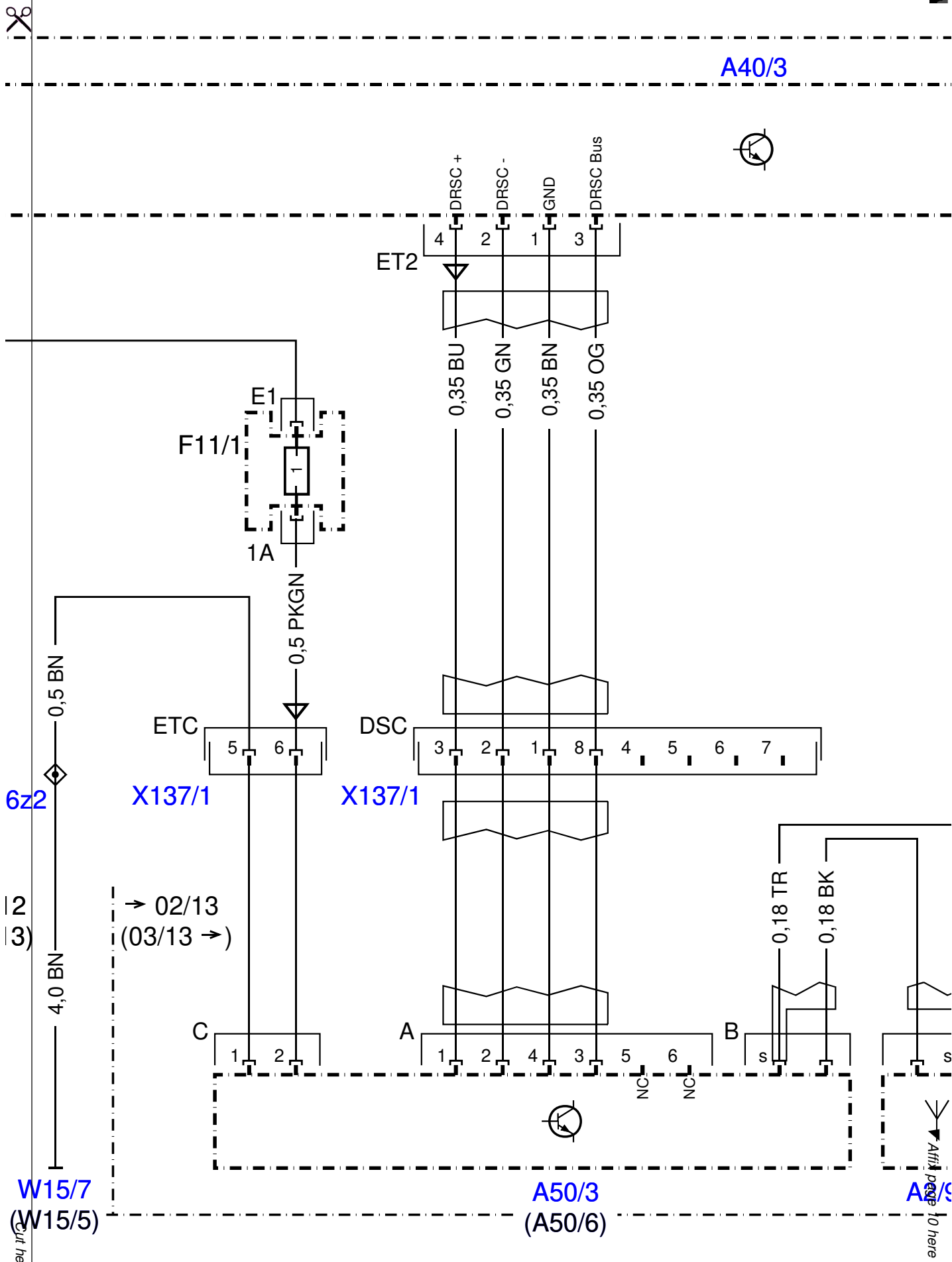
3

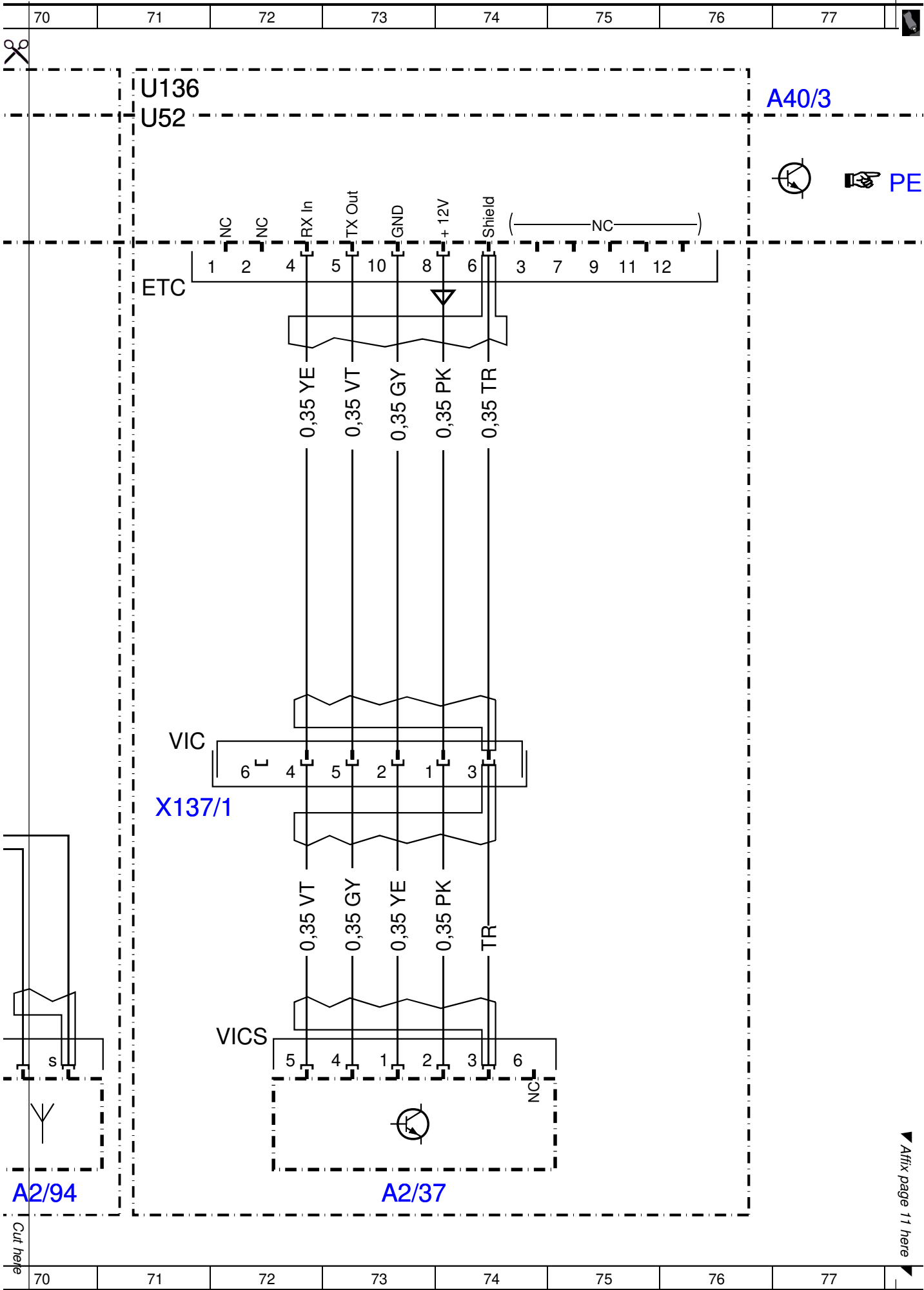
15R

7,5

Cut here

Affix page here





▲ Affix page 11 here

