

Document number: pe07.08-p-2101-97dah

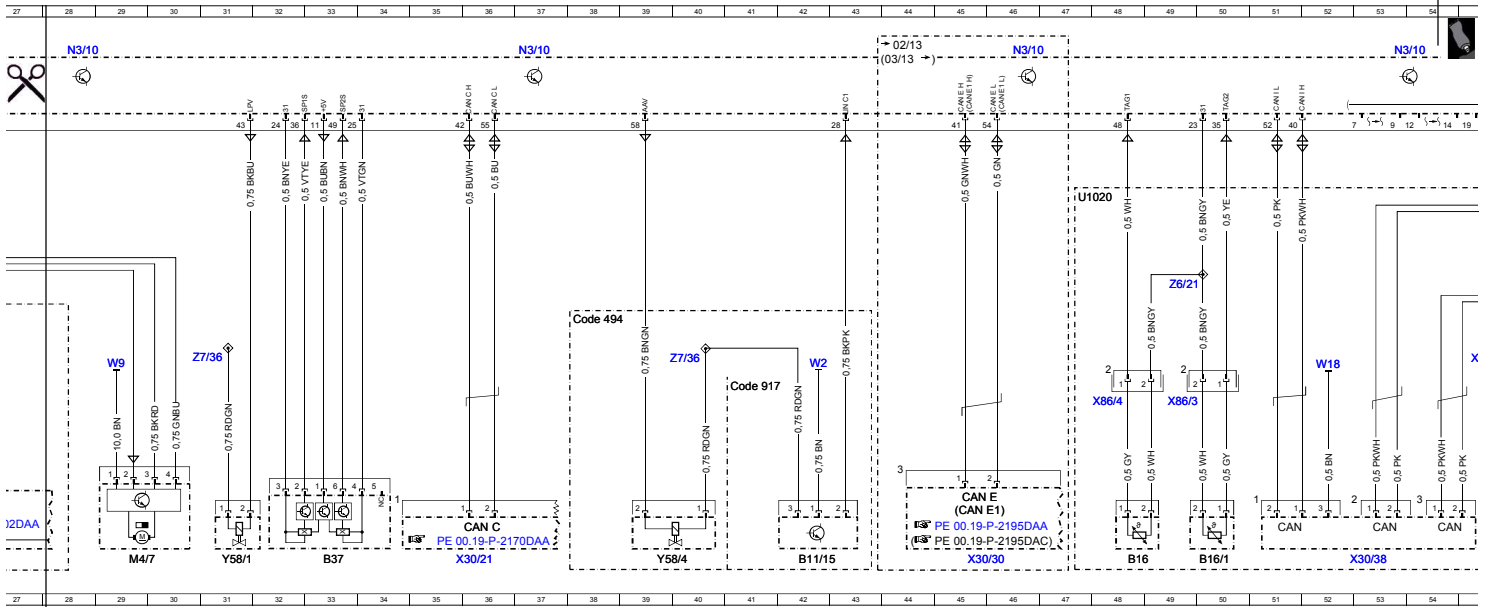
Document title: Wiring diagram for gasoline direct injection system control unit

Code:	Designation:	Position:
A0	Color code key	88L
B11/15	Radiator sensor for engine diagnosis	42L
B16	Temperature sensor upstream of NOx storage catalytic converter, right	48L
B16/1	Temperature sensor upstream of NOx storage catalytic converter, left	50L
B37	Accelerator pedal sensor	33L
B4/3	Fuel tank pressure sensor	77L
CAN C	Drive train CAN	36K
CAN E	Chassis CAN	45K
CAN E1	Chassis CAN 1	45K
Code 494	USA version	38F
Code 494	USA version	76D
Code 4U7	Start/stop voltage dip protection	22F
Code 917	PZEV emission USA	41H
Code B03	ECO start/stop function	18E
Code B03	ECO start/stop function	22G
Code ME04	Hybrid drive 20 KW VARIANT	22G
F32	Front electrical prefuse box	26L
F32f151	Prefuse 151	24K
F32f154	Prefuse 154	24K
M4/7	Combustion engine and air conditioning with integrated control fan motor	29L
N10/1	Front SAM control unit with fuse and relay module	3L
N10/1	Front SAM control unit with fuse and relay module	20L
N10/1f22	Fuse 22	11L
N10/1f23	Fuse 23	9L
N10/1f24	Fuse 24	10L
N10/1f27	Fuse 27	5L
N118	Fuel pump control unit	70L
N2/10	Supplemental restraint system control unit	74L
N3/10	ME-SFI [ME] control unit	4A
N3/10	ME-SFI [ME] control unit	12A
N3/10	ME-SFI [ME] control unit	28A
N3/10	ME-SFI [ME] control unit	19A
N3/10	ME-SFI [ME] control unit	37A
N3/10	ME-SFI [ME] control unit	46A
N3/10	ME-SFI [ME] control unit	53A
N3/10	ME-SFI [ME] control unit	61A
N3/10	ME-SFI [ME] control unit	69A
N3/10	ME-SFI [ME] control unit	76A
N37/5	Left nitrogen oxides control unit	65L
N37/5b1	Left NOx sensor	62L
N37/6	Right nitrogen oxides control unit	57L
N37/6b1	Right NOx sensor	61L
U1020	Valid for gasoline engine with stratified operation	47D
U12	Valid for left-hand drive vehicles	57E
U13	Valid for right-hand drive vehicles	57F
U240	Valid for all except ECO start/stop function	22F
U960	Valid for radiator shutters	12F
W15/1	Right footwell ground point	58G
W16/5	Left major assembly compartment electronics ground point	8E
W16/5	Left major assembly compartment electronics ground point	17E
W18	Left front seat crossmember ground point	52G
W18	Left front seat crossmember ground point	67E
W19	Right front seat crossmember ground point	58G
W2	Right front ground point at lamp unit	42G
W9	Left front ground point (at lamp unit)	29G
X25/2	Engine compartment/interior electrical connector	19H
X25/4	Fuel tank electrical connector	76H

Document number: pe07.08-p-2101-97dah

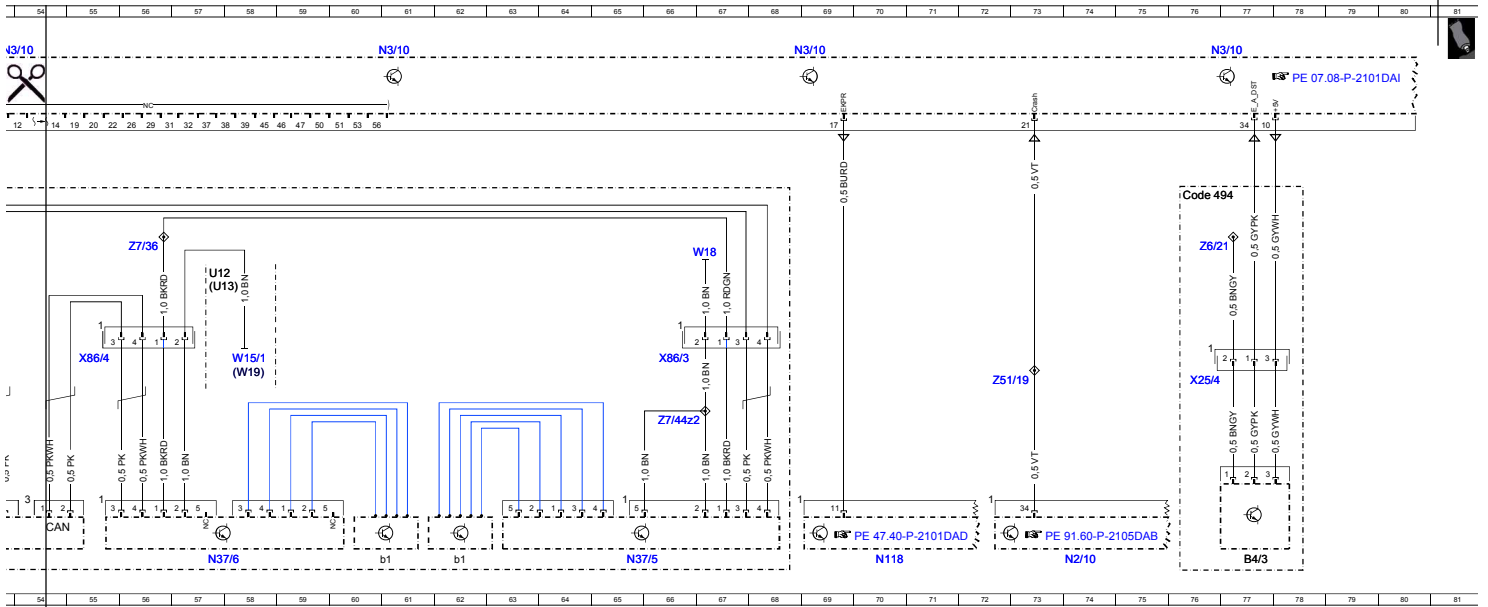
Document title: Wiring diagram for gasoline direct injection system control unit

Code:	Designation:	Position:
X26	Interior and engine wiring harness electrical connector	15H
X30/21	Drive train CAN voltage distributor electrical connector	36L
X30/30	Vehicle floor chassis CAN voltage distributor electrical connector	45L
X30/38	Potential distributor electrical connector (CAN I)	53L
X86/3	Nitrogen oxides control unit electrical connector	49H
X86/3	Nitrogen oxides control unit electrical connector	66G
X86/4	Right nitrogen oxides control unit electrical connector	48H
X86/4	Right nitrogen oxides control unit electrical connector	55G
Y58/1	Purge control valve	31L
Y58/4	Activated charcoal filter shutoff valve	39L
Y84	Radiator shutters actuator	14L
Z51/19	Engine management crash signal connector sleeve	73G
Z6/21	Temperature sensor circuit 31 connector sleeve	49F
Z6/21	Temperature sensor circuit 31 connector sleeve	76E
Z7/36	Circuit 87 M2e connector sleeve	7G
Z7/36	Circuit 87 M2e connector sleeve	13G
Z7/36	Circuit 87 M2e connector sleeve	31G
Z7/36	Circuit 87 M2e connector sleeve	40G
Z7/36	Circuit 87 M2e connector sleeve	56E
Z7/44z2	Sensor ground line connector sleeve	66H
Z7/73z1	Circuit 87 connector sleeve	6G



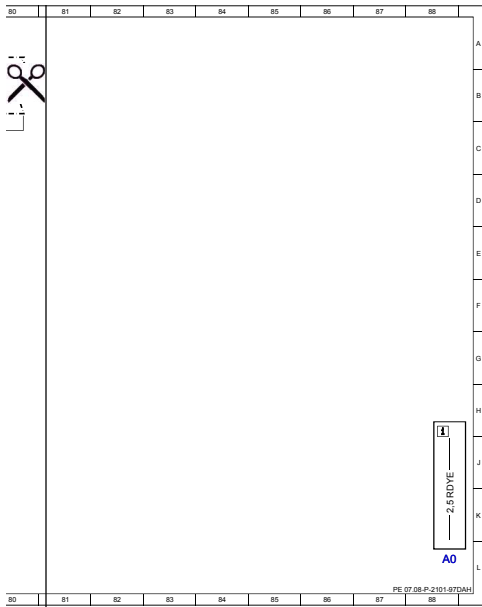
Cut here

Affix page 3 here



Cut here

▼ Affix page 4 here ▼



Cut here