

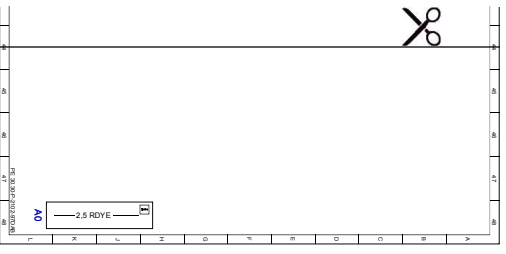
Document number : pe30.30-p-2102-97dab
Document title : Wiring diagram for the radar sensors control unit

Code :	Designation :	Position :
A0	Color code key	48L
B29	Front long-range radar sensor	39A
B29/10	Center rear bumper radar sensor	32L
B29/2	DISTRONIC sensor (DTR) / left front bumper	11L
B29/3	DISTRONIC sensor (DTR) / right front bumper	14L
B29/6	Left rear bumper radar sensor	27L
B29/7	Right rear bumper radar sensor	24L
Code 233	DISTRONIC PLUS	7F
Code 233	DISTRONIC PLUS	35A
Code 237	Active Blind Spot Assist	7F
Code 237	Active Blind Spot Assist	22H
Code 237	Active Blind Spot Assist	35A
Code 253	Rear-end collision warning and protection system	29H
Code 269	Brake Assist System PLUS, cross-traffic (BAS+0)	7F
Code 300	Collision mitigation (OMS)	7G
N10/1	Front SAM control unit with fuse and relay module	40L
N10/1f36	Fuse 36	39L
N10/2	Rear SAM control unit with fuse and relay module	4L
N10/2f59	Fuse 59	6L
N10/2f79	Fuse 79	3L
N62/1	Radar sensors control unit	4A
N62/1	Radar sensors control unit	12A
N62/1	Radar sensors control unit	20A
N62/1	Radar sensors control unit	28A
N93/7	Chassis gateway control unit	19L
U229	Valid for short range radar with active Park Assist without pedestrian protection	7C
U230	Valid for short range radar with active Park Assist and pedestrian protection	7D
U231	Valid for short range radar without pedestrian protection	12C
U232	Valid for short range radar with pedestrian protection without active Park Assist	13D
U265	Valid for short range radar without active Park Assist	13D
W15/1	Not valid for pedestrian protection	3E
W2	Right footwell ground point	10D
W2	Right front ground point at lamp unit	16D
W2	Right front ground point at lamp unit	39E
W2	Right front ground point at lamp unit	39E
W7/8	Right wheelhouse trunk ground point	25C
X172/2	Rear bumper radar sensors electrical connector	22E
X26/38	Front bumper and frame wiring harness electrical connector	8E
X26/38	Front bumper and frame wiring harness electrical connector	14E
Z36/16	Front sensor CAN connector sleeve	14H

Document number : pe30_30-p-2102-97dab

Document title : Wiring diagram for the radar sensors control unit

Code :	Designation :	Position :
Z36/17	Rear sensor CAN connector sleeve	33G
Z36/18	Front sensor CAN connector sleeve	13H
Z36/19	Rear sensor CAN connector sleeve	31H
Z36/28	Rear radar sensors ground line connector sleeve	25G
Z36/29	Rear radar sensor's positive line connector sleeve	23H
Z36/30	Short range radar front sensor ground connector sleeve	10H
Z36/31	Short range radar front sensor voltage connector sleeve	9H
Z36/31	Short range radar front sensor voltage connector sleeve	16H
Z7//19Z4	Circuit 30 (fused) connector sleeve	2E
Z99/13	Radar sensors control unit circuit 87 connector sleeve	5E
Z99/13	Radar sensors control unit circuit 87 connector sleeve	21G



Cut here