

Document number : pe54.21-p-2106-97dac

Document title : Wiring diagram of front SAM control unit with fuse and relay module (N10/1)

Code :	Designation :	Position :
A0	Color code key	104L
Code 4U7	Start/stop voltage dip protection	2G
Code 4U7	Star/L/stop voltage dip protection	8H
Code 580	Air conditioning	69G
Code 581	Automatic air conditioning	69G
Code 924	Bivalent natural gas drive	84K
Code B03	ECO start/stop function	2G
Code B03	ECO start/stop function	8H
Code ME04	Hybrid drive 20 KW VARIANT	2G
Code ME04	Hybrid drive 20 KW VARIANT	8H
Code U42	BlueTEC diesel exhaust treatment	84K
F32	Front electrical prefuse box	6L
F32	Front electrical prefuse box	12L
F32	Prefuse 151	10K
F32f151	Prefuse 154	3K
F32f154	Prefuse 154	10K
F32f154	Prefuse 156	4K
F32f156	Prefuse 157	3K
F32f157	Prefuse 162	5K
F32f162	Combustion engine and air conditioning with integrated control fan motor	16L
M4/7		
N10/1	Front SAM control unit with fuse and relay module	5A
N10/1	Front SAM control unit with fuse and relay module	20A
N10/1	Front SAM control unit with fuse and relay module	28A
N10/1	Front SAM control unit with fuse and relay module	36A
N10/1	Front SAM control unit with fuse and relay module	44A
N10/1	Front SAM control unit with fuse and relay module	52A
N10/1	Front SAM control unit with fuse and relay module	60A
N10/1	Front SAM control unit with fuse and relay module	85A
N10/1	Front SAM control unit with fuse and relay module	92A
N10/1	Front SAM control unit with fuse and relay module	78A
N10/1	Front SAM control unit with fuse and relay module	69A
N10/1	Front SAM control unit with fuse and relay module	11A
N10/1f15	Fuse 15	75A
N10/1f22	Fuse 22	16A
N10/1f24	Fuse 24	83A
N10/1f8	Fuse 8	77A
N10/1kN	Engine circuit 87 relay	15A
N118/2	CNG control unit	85L
N2/10	Supplemental restraint system control unit	76L

Document number : pe54_21-p-2106-97dac
Document title : Wiring diagram of front SAM control unit with fuse and relay module (N10/1)

Code :	Designation :	Position :
N3/10	ME-SF1 [ME] control unit	33L
N3/10	ME-SF1 [ME] control unit	55L
N3/10	ME-SF1 [ME] control unit	51L
N3/10	ME-SF1 [ME] control unit	59L
N3/10	ME-SF1 [ME] control unit	80L
N3/9	CD1 control unit	38L
N3/9	CD1 control unit	63L
N3/9	CD1 control unit	85L
N3/9	CD1 control unit	67L
U1018	Valid for gasol ine engine 276	24J
U1018	Valid for gasol ine engine 276	47G
U1018	Valid for gasol ine engine 276	53G
U1018	Valid for gasol ine engine 276	94G
U1027	Valid for gasol ine engine 271 continuous fuel injection system (electronic)	24J
U1027	Valid for gasol ine engine 271 continuous fuel injection system (electronic)	31G
U1027	Valid for gasol ine engine 271 continuous fuel injection system (electronic)	42G
U1027	Valid for gasol ine engine 271 continuous fuel injection system (electronic)	57G
U1027	Valid for gasol ine engine 271 continuous fuel injection system (electronic)	98G
U1032	Valid for engine 278 and 157	24J
U1032	Valid for engine 278 and 157	47G
U1032	Valid for engine 278 and 157	53G
U1032	Valid for engine 278 and 157	94G
U1032	Valid for engine 278 and 157	79J
U1058	Valid for model 212_095	79J
U1073	Valid for gasol ine engine 276; 9	79J
U127	Valid for combustion engines 272 and 273 KE	44G
U127	Valid for combustion engines 272 and 273 KE	57G
U127	Valid for combustion engines 272 and 273 KE	90G
U127	Valid for combustion engines 272 and 273 KE	79K
U152	Valid for gasol ine engine 156	21J
U152	Valid for gasol ine engine 156	41G
U152	Valid for gasol ine engine 156	57G
U152	Valid for gasol ine engine 156	92G
U152	Valid for gasol ine engine 156	79L
U157	Valid for combustion engine 272 DE	42G
U157	Valid for combustion engine 272 DE	88G
U157	Valid for combustion engine 272 DE	79J
U221	Valid for China	31G
U240	Valid for all except ECO start/stop function	2F

Document number : pe54.21-p-2106-97dac
Document title : Wiring diagram of front SAM control unit with fuse and relay module (N10/1)

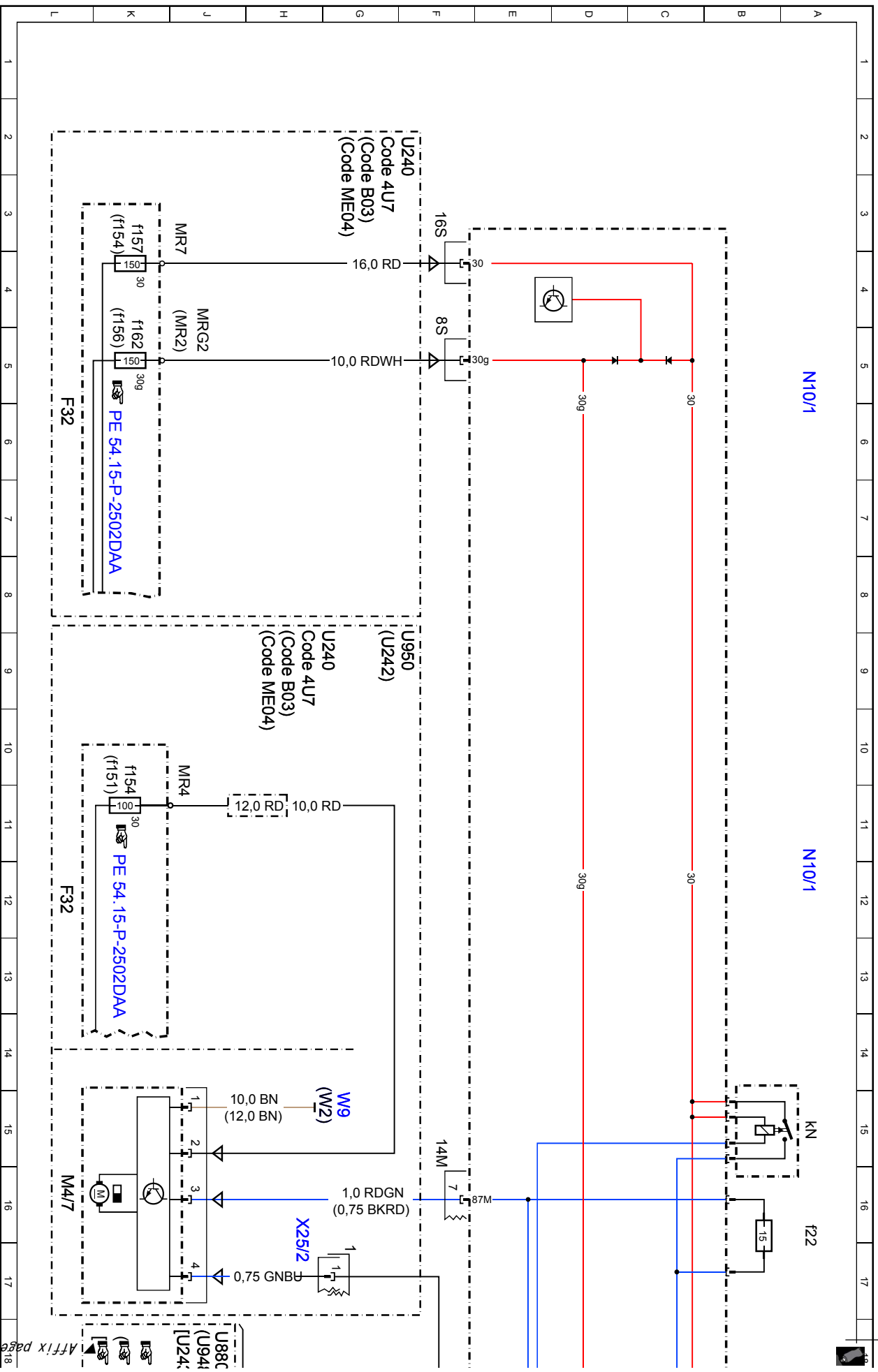
Code :	Designation :	Position :
U240	Valid for all except E00 start/stop function	86
U242	Valid for fan motor 800 W	86
U243	Valid for diesel engine 651 with all-wheel drive	18J
U243	Valid for diesel engine 651 with all-wheel drive	366
U243	Valid for diesel engine 651 with all-wheel drive	83J
U244	Valid for BlueTEC	28J
U244	Valid for BlueTEC	28J
U244	Valid for BlueTEC	666
U244	Valid for BlueTEC	666
U249	Valid for diesel engine 651 without all-wheel drive	366
U249	Valid for diesel engine 651 without all-wheel drive	83J
U362	Valid for gasol ine engine 274	45G
U362	Valid for gasol ine engine 274	886
U362	Valid for gasol ine engine 274	79K
U362	Valid for gasol ine engine 274	83K
U362	Valid for gasol ine engine 274	79K
U391	Valid for gasol ine engine 276.8	79K
U561	Valid for Delphi system	28J
U561	Valid for Delphi system	28J
U561	Valid for Bosch system	67G
U561	Valid for Bosch system	28J
U562	Valid for Bosch system	67G
U562	Valid for Bosch system	28J
U739	Valid for gasol ine engine 271 DE	21J
U739	Valid for gasol ine engine 271 DE	21J
U739	Valid for gasol ine engine 271 DE	31G
U739	Valid for gasol ine engine 271 DE	43G
U739	Valid for gasol ine engine 271 DE	49G
U739	Valid for gasol ine engine 271 DE	96G
U819	Valid for gasol ine engine 272	79H
U819	Valid for gasol ine engine 272	21J
U880	Valid for diesel engine 642	49G
U880	Valid for diesel engine 642	18J
U880	Valid for diesel engine 642	47G
U880	Valid for diesel engine 642	61G
U880	Valid for diesel engine 642	95G
U880	Valid for diesel engine 642	83H
U948	Valid for diesel engine 651	18J
U948	Valid for diesel engine 651	366
U948	Valid for diesel engine 651	45G
U948	Valid for diesel engine 651	61G
U948	Valid for diesel engine 651	61G
U948	Valid for diesel engine 651	93G

Document number : pe54.21-p-2106-97dac
Document title : Wiring diagram of front SAM control unit with fuse and relay module (N10/1)

Code :	Designation :	Position :
U948	Valid for diesel engine 651	83J
U948	Valid for diesel engine 651	83K
U948	Valid for diesel engine 651	27J
U948	Valid for diesel engine 651	27U
U948	Valid for diesel engine 651	656
U950	Valid for fan motor 650 W	656
U968	Valid for mild hybrid drive	8F
U968	Valid for mild hybrid drive	626
U968	Valid for mild hybrid drive	726
U968	Valid for mild hybrid drive	83J
U977	Valid for mild hybrid drive	626
W2	Not valid for mild hybrid drive	15H
W9	Left front ground point at lamp unit	156
X25/2	Engine compartment/interior electrical connector	16H
X25/2	Engine compartment/interior electrical connector	70H
X26	Interior and engine wiring harness electrical connector	43H
X26	Interior and engine wiring harness electrical connector	42H
X26	Interior and engine wiring harness electrical connector	45H
X26	Interior and engine wiring harness electrical connector	46J
X26	Interior and engine wiring harness electrical connector	48H
X26	Interior and engine wiring harness electrical connector	73J
X26	Interior and engine wiring harness electrical connector	98H
X26	Interior and engine wiring harness electrical connector	92H
X26	Interior and engine wiring harness electrical connector	89H
X26	Interior and engine wiring harness electrical connector	90H
X26	Interior and engine wiring harness electrical connector	93H
X26	Interior and engine wiring harness electrical connector	95H
X26	Interior and engine wiring harness electrical connector	97H
Y19/3	Evaporator shutoff valve	73L
Y84	Radiator shutters actuator	35L
Y84	Radiator shutters actuator	40L
Z1/35z1	Circuit 87 M1e connector sleeve	42L
Z1/35z1	Circuit 87 M1e connector sleeve	40H
Z1/35z1	Circuit 87 M1e connector sleeve	91L
Z1/35z1	Circuit 87 M1e connector sleeve	91L
Z1/35z2	Circuit 87 M1e connector sleeve	89L
Z1/35z2	Circuit 87 M1e connector sleeve	89L
Z1/36	Circuit 87 M2e connector sleeve	97L
Z1/36	Circuit 87 M2e connector sleeve	44L
Z1/36z1	Circuit 87 M2e connector sleeve	46L

Document number : pe54.21-p-2106-97dac
Document title : Wiring diagram of front SAM control unit with fuse and relay module (N10/1)

Code :	Designation :	Position :
Z7/36z1	Circuit 87 M2e connector sleeve	48L
Z7/36z2	Circuit 87 M2e connector sleeve	45L
Z7/5z1	Circuit 87 connector sleeve	95L
Z7/5z2	Circuit 87 connector sleeve	48L
Z7/5z2	Circuit 87 connector sleeve	46L
Z7/5z2	Circuit 87 connector sleeve	95L
Z7/5z3	Circuit 87 connector sleeve	94L
Z7/5z3	Circuit 87 connector sleeve	95K
Z7/98z3	Circuit 87 M3e connector sleeve	92L

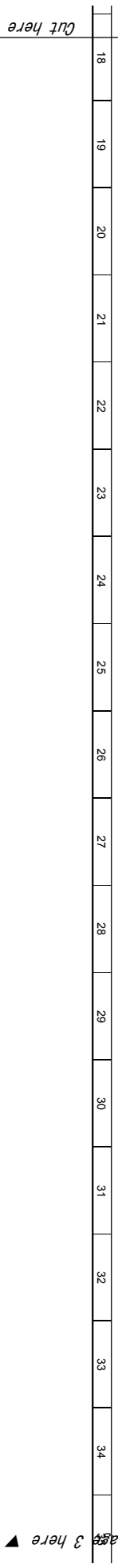
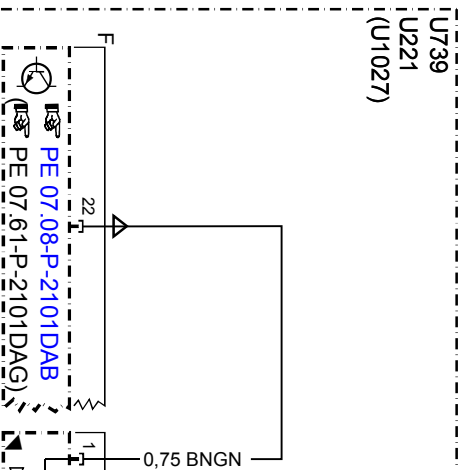
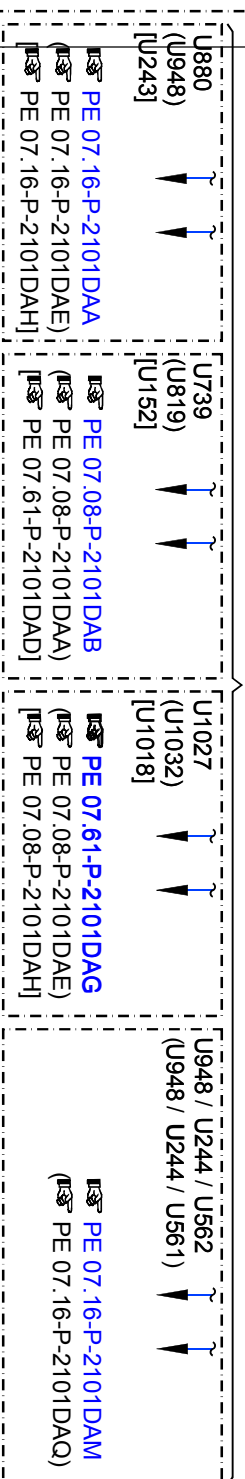
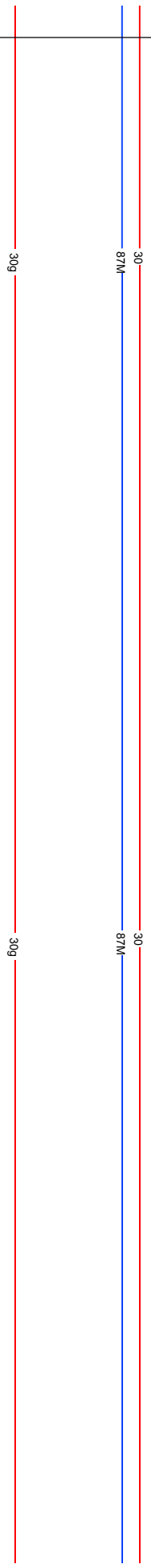


18	19	20	21	22	23	24	25	26	27	28	29	30	31	32	33	34	35
----	----	----	----	----	----	----	----	----	----	----	----	----	----	----	----	----	----



N10/1

N10/1

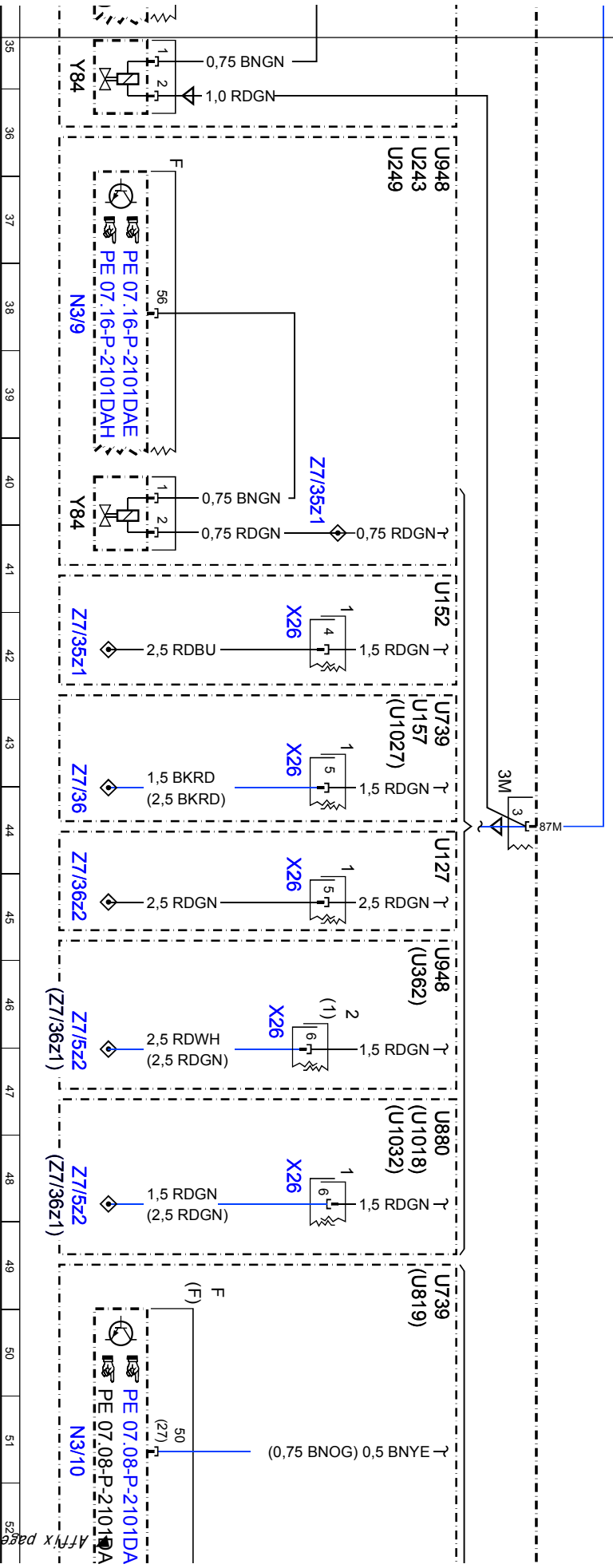
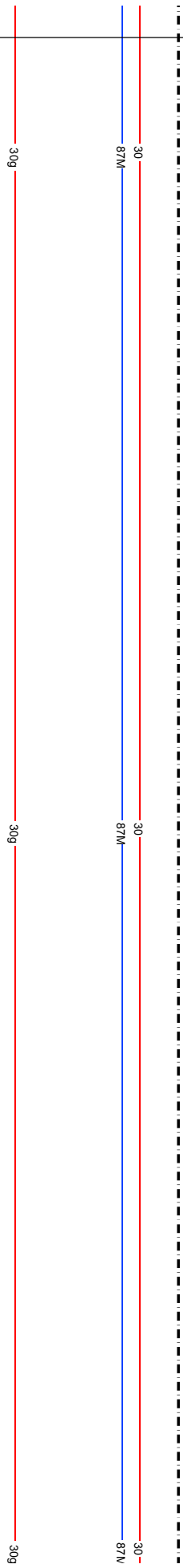




N10/1

N10/1

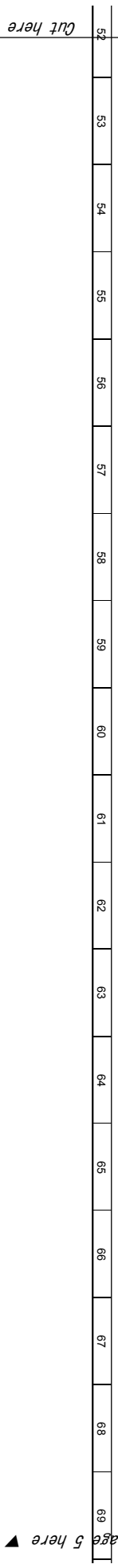
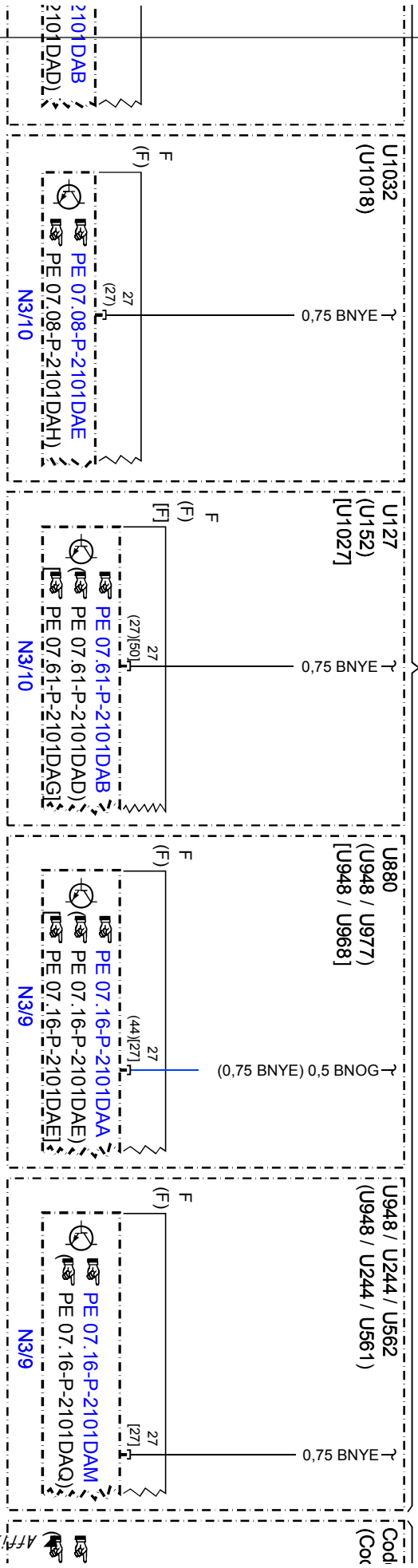
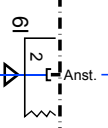
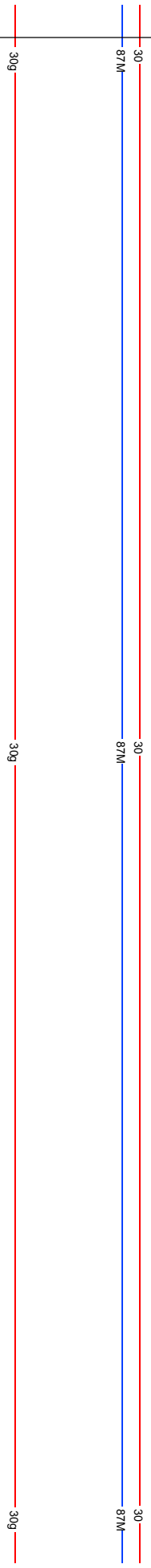
N10/1



Cut here

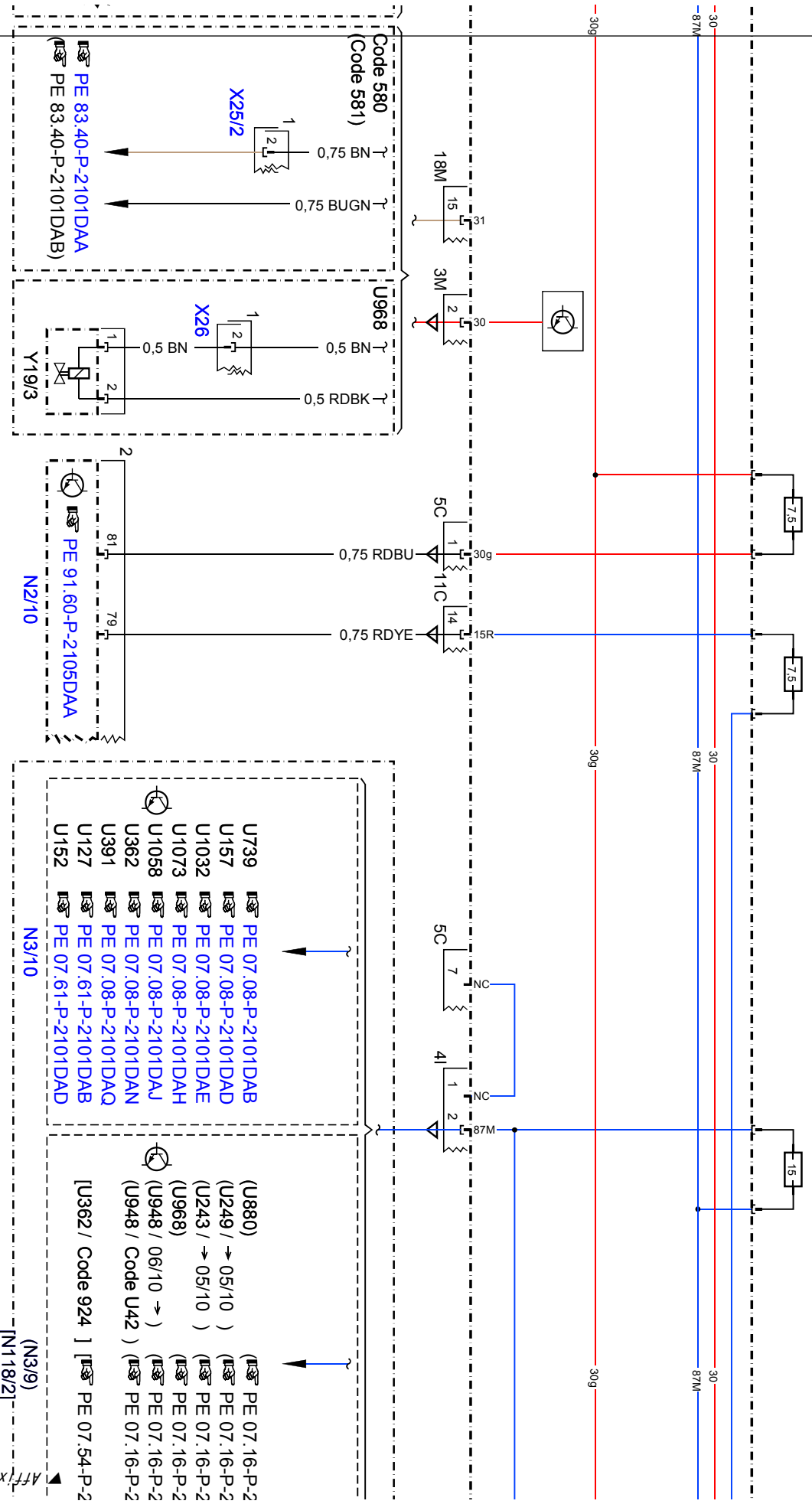
Fix page 4 here

N10/1 N10/4 N10/1



Fix page 5 here

f15 f8 N10/1 f24 N10/1



Cut here

Affix page 6 here

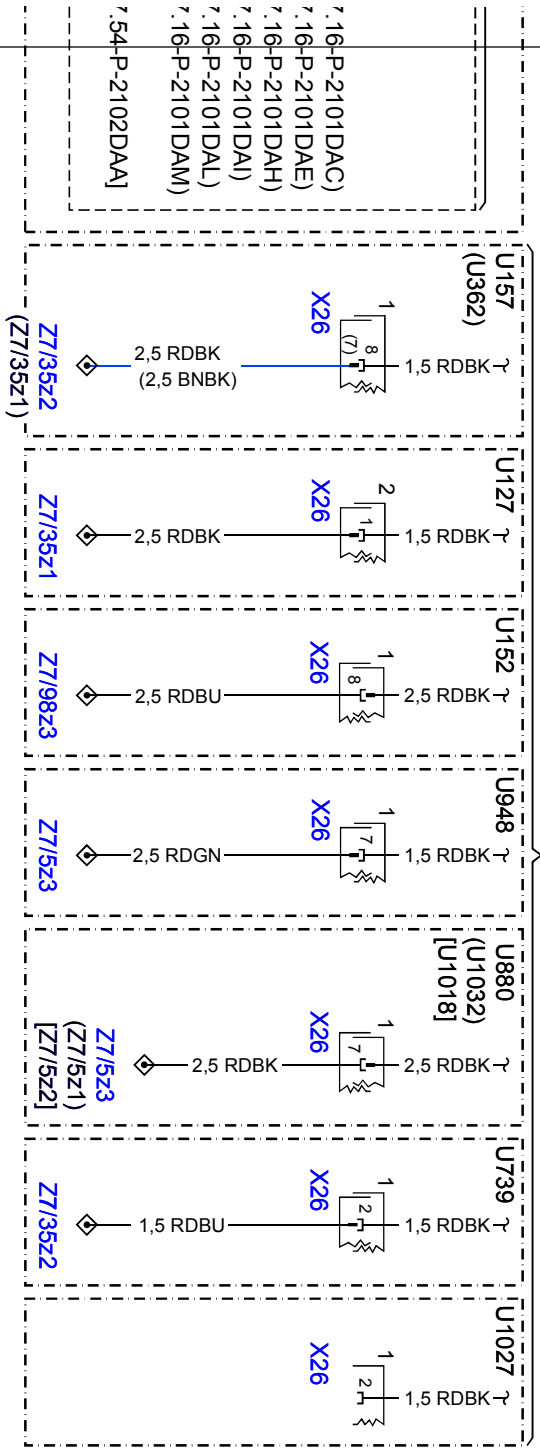
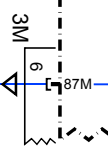


N10/1

PE 54.21-P-2106DAD

30g

87M

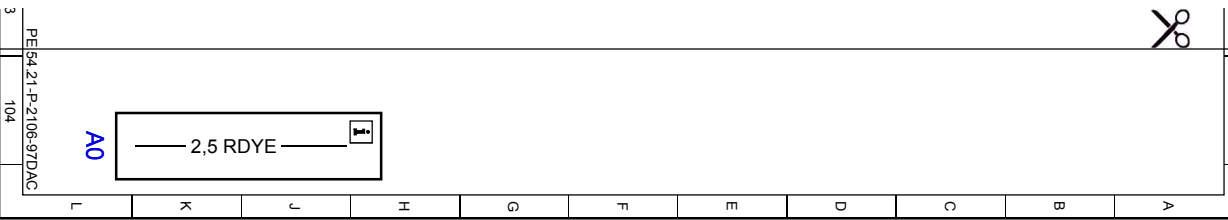


- 7.16-P-2101DAC)
- 7.16-P-2101DAE)
- 7.16-P-2101DAH)
- 7.16-P-2101DAI)
- 7.16-P-2101DAL)
- 7.16-P-2101DAM)
- 7.54-P-2102DAA]

Cut here

▲ Affix here 7 here ▼

3 104



Cut here