

Document number : pe54.21-p-2108-97daj

Document title : Wiring diagram / rear SAM control unit with fuse and relay module (N10/2)

Code:	Designation:	Position:
A0	Color code key	113L
Code 218	Backup camera	15H
Code 218	Backup camera	23H
Code 4U7	Start/stop voltage dip protection	1G
Code B03	ECO start/stop function	8G
Code B03	ECO start/stop function	1G
E19/1	Left license plate lamp	103L
E19/1	Left license plate lamp	98L
E19/2	Right license plate lamp	105L
E19/2	Right license plate lamp	99L
E21	Center stop lamp	102L
E21	Center stop lamp	97L
E21x1	Center brake lamp electrical connector	96J
E21x1	Center brake lamp electrical connector	102J
E3	Left rear lamp unit	41L
E3	Left rear lamp unit	51L
E3	Left rear lamp unit	77L
E3	Left rear lamp unit	88L
E3/1	Inner left rear lamp unit	33L
E3/1	Inner left rear lamp unit	21L
E3/1	Inner left rear lamp unit	68L
E3/1	Inner left rear lamp unit	61L
E3/1e2	Left inside taillight	35L
E3/1e2	Left inside taillight	23L
E3/1e2	Left inside taillight	70L
E3/1e2	Left inside taillight	63L
E3/1e3	Left backup lamp	33L
E3/1e3	Left backup lamp	21L
E3/1e3	Left backup lamp	69L
E3/1e3	Left backup lamp	61L
E3/1e4	Inner left stop lamp and taillamp	34L
E3/1e4	Inner left stop lamp and taillamp	22L
E3/1e4	Inner left stop lamp and taillamp	70L
E3/1e4	Inner left stop lamp and taillamp	62L
E3/1e5	Left rear fog lamp	34L
E3/1e5	Left rear fog lamp	22L
E3/1e5	Left rear fog lamp	69L
E3/1e5	Left rear fog lamp	62L
E3/1e6	Inner left background light	34L
E3/1e6	Inner left background light	22L
E3/1e6	Inner left background light	69L
E3/1e6	Inner left background light	62L
E3e1	Left rear turn signal lamp	43L
E3e1	Left rear turn signal lamp	50L
E3e1	Left rear turn signal lamp	79L
E3e1	Left rear turn signal lamp	87L
E3e11	Outer left brake light and taillight	43L
E3e11	Outer left brake light and taillight	51L
E3e11	Outer left brake light and taillight	79L
E3e11	Outer left brake light and taillight	87L
E3e15	Outer left background light	43L
E3e15	Outer left background light	50L
E3e15	Outer left background light	78L
E3e15	Outer left background light	87L
E3e6	Left side-marker lamp	42L
E3e6	Left side-marker lamp	50L
E3e6	Left side-marker lamp	78L

Document number: pe54.21-p-2108-97daj

Document title: Wiring diagram / rear SAM control unit with fuse and relay module (N10/2)

Code:	Designation:	Position:
E3e6	Left side-marker lamp	86L
E4	Right rear lamp unit	57L
E4	Right rear lamp unit	94L
E4/1	Inner right rear lamp unit	38L
E4/1	Inner right rear lamp unit	73L
E4/1e2	Right inside taillight	40L
E4/1e2	Right inside taillight	76L
E4/1e3	Right backup lamp	39L
E4/1e3	Right backup lamp	74L
E4/1e4	Inner right brake light and taillight	40L
E4/1e4	Inner right brake light and taillight	75L
E4/1e5	Right rear fog lamp	39L
E4/1e5	Right rear fog lamp	75L
E4/1e6	Inner right background light	40L
E4/1e6	Inner right background light	75L
E4e1	Right rear turn signal lamp	55L
E4e1	Right rear turn signal lamp	91L
E4e11	Outer right brake light and taillight	54L
E4e11	Outer right brake light and taillight	91L
E4e15	Outer right background light	56L
E4e15	Outer right background light	93L
E4e6	Right side-marker lamp	55L
E4e6	Right side-marker lamp	92L
F32	Front electrical prefuse box	4L
F32f158	Prefuse 158	2K
F32f163	Prefuse 163	2K
F32f164	Prefuse 164	6K
F33	Rear prefuse box	13L
F33f172	Prefuse 172	11K
F97	Rear SAM control unit with fuse and relay module circuit 30 fuse	8J
N10/2	Rear SAM control unit with fuse and relay module	101A
N10/2	Rear SAM control unit with fuse and relay module	12A
N10/2	Rear SAM control unit with fuse and relay module	4A
N10/2	Rear SAM control unit with fuse and relay module	36A
N10/2	Rear SAM control unit with fuse and relay module	28A
N10/2	Rear SAM control unit with fuse and relay module	44A
N10/2	Rear SAM control unit with fuse and relay module	52A
N10/2	Rear SAM control unit with fuse and relay module	61A
N10/2	Rear SAM control unit with fuse and relay module	69A
N10/2	Rear SAM control unit with fuse and relay module	77A
N10/2	Rear SAM control unit with fuse and relay module	85A
N10/2	Rear SAM control unit with fuse and relay module	93A
N10/2	Rear SAM control unit with fuse and relay module	20A
N66/10	Backup camera voltage supply module	26L
N66/10	Backup camera voltage supply module	17L
U118	Valid for front battery	6G
U119	Valid for rear battery	11G
U240	Valid for all except ECO start/stop function	6G
U240	Valid for all except ECO start/stop function	1G
U54	Valid for all except Japan	15H
U54	Valid for all except Japan	23H
U57	Valid for model 212.2	23H
U57	Valid for model 212.2	46H
U57	Valid for model 212.2	36H
U57	Valid for model 212.2	57H
U57	Valid for model 212.2	100G
U57	Valid for model 212.2	64H

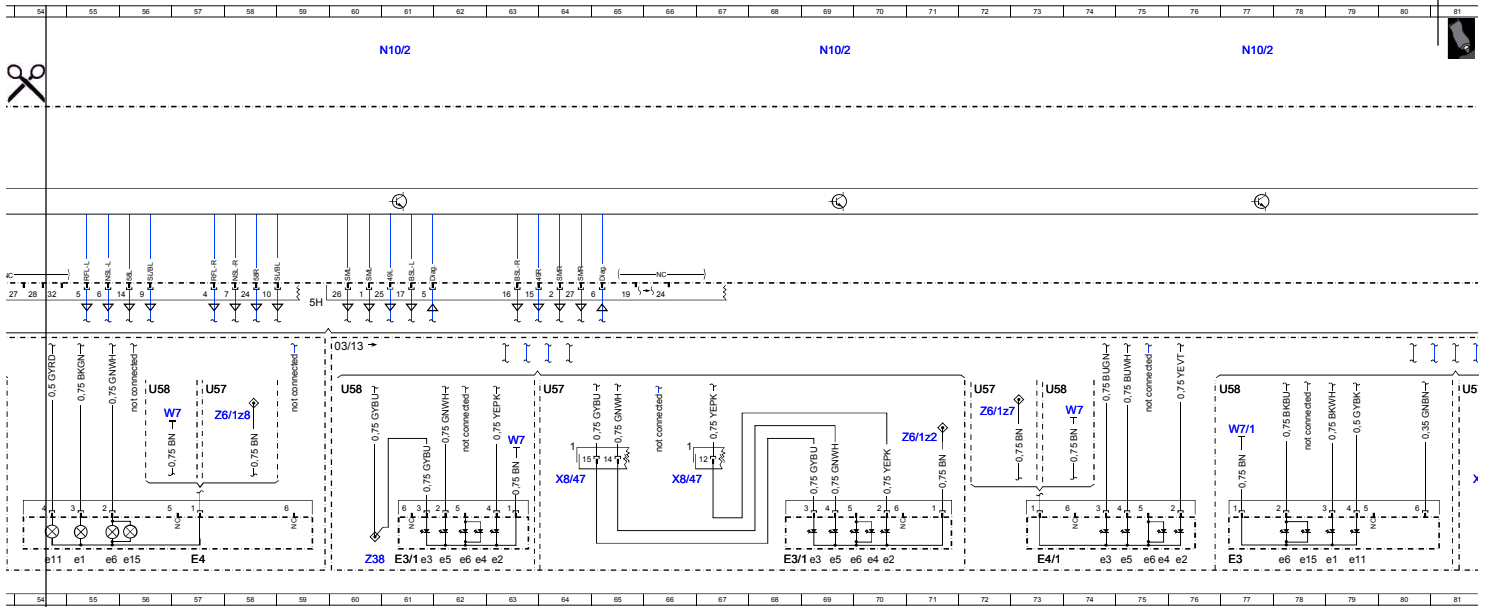
Document number: pe54.21-p-2108-97daj

Document title: Wiring diagram / rear SAM control unit with fuse and relay module (N10/2)

Code:	Designation:	Position:
U57	Valid for model 212.2	81H
U57	Valid for model 212.2	72H
U57	Valid for model 212.2	94H
U58	Valid for model 212.0/1	15H
U58	Valid for model 212.0/1	38H
U58	Valid for model 212.0/1	56H
U58	Valid for model 212.0/1	41H
U58	Valid for model 212.0/1	96G
U58	Valid for model 212.0/1	60H
U58	Valid for model 212.0/1	73H
U58	Valid for model 212.0/1	93H
U58	Valid for model 212.0/1	76H
U880	Valid for diesel engine 642	7H
U968	Valid for mild hybrid drive	1H
W48	Left rear roof frame ground point	53L
W48	Left rear roof frame ground point	89L
W7	Right rear wheel well ground point	38H
W7	Right rear wheel well ground point	23J
W7	Right rear wheel well ground point	56H
W7	Right rear wheel well ground point	99G
W7	Right rear wheel well ground point	97G
W7	Right rear wheel well ground point	74H
W7	Right rear wheel well ground point	63J
W7	Right rear wheel well ground point	93H
W7/1	Right taillamp trunk ground point	41H
W7/1	Right taillamp trunk ground point	77H
X8/45	Left vehicle interior and tailgate electrical connector	26J
X8/47	Left and right liftgate electrical connector	29J
X8/47	Left and right liftgate electrical connector	47J
X8/47	Left and right liftgate electrical connector	64J
X8/47	Left and right liftgate electrical connector	83J
X8/47	Left and right liftgate electrical connector	66J
X8/47	Left and right liftgate electrical connector	82J
Z38	Backup lamp connector sleeve	32L
Z38	Backup lamp connector sleeve	20L
Z38	Backup lamp connector sleeve	60L
Z6/1z2	Circuit 31 connector sleeve	35J
Z6/1z2	Circuit 31 connector sleeve	71J
Z6/1z4	Circuit 31 connector sleeve	52J
Z6/1z4	Circuit 31 connector sleeve	89J
Z6/1z6	Circuit 31 connector sleeve	104H
Z6/1z6	Circuit 31 connector sleeve	101H
Z6/1z7	Circuit 31 connector sleeve	37H
Z6/1z7	Circuit 31 connector sleeve	72H
Z6/1z8	Circuit 31 connector sleeve	58H
Z6/1z8	Circuit 31 connector sleeve	94H

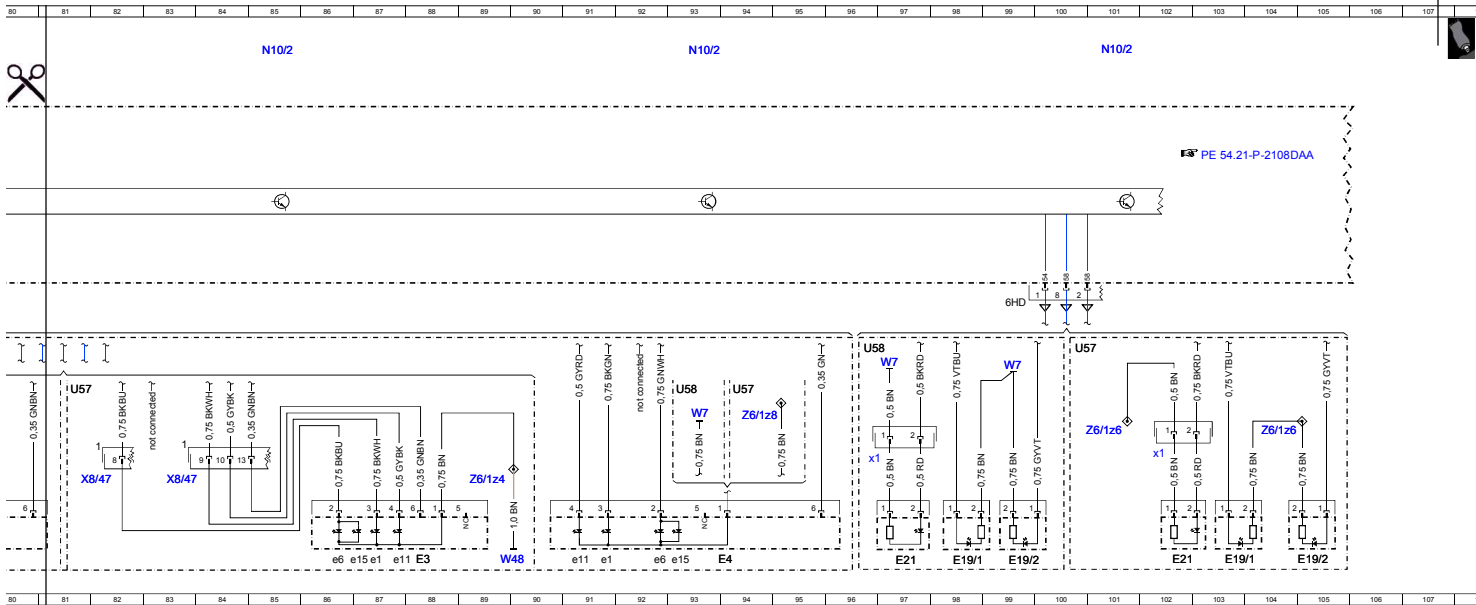






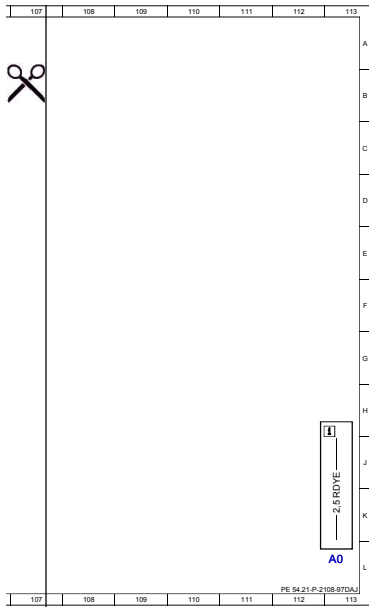
Cut here

▼ Affix page 4 here ▼



Cut here

▼ Affix page 5 here ▼



*Cut here*