

**Document number :** pe07.16-p-2101-97dal  
**Document title :** Wiring diagram for common rail diesel injection (CDI) control unit

<b>Code :</b>	<b>Designation :</b>	<b>Position :</b>
A0	Color code key	88L
B16/15	Temperature sensor upstream of SCR catalytic converter	69L
B19/7	Temperature sensor upstream of catalytic converter	67L
B19/9	Temperature sensor upstream of diesel particulate filter	72L
B28/8	Differential pressure sensor (DPF)	74L
B37	Accelerator pedal sensor	62L
B79/2	Transmission neutral position position sensor	77L
CAN C	Drive train CAN	77L
CAN E	Chassis CAN	6K
CAN E	Chassis CAN	13K
CAN E1	Chassis CAN 1	13K
CAN I	Drive train sensor CAN	9K
Code 474	Diesel particulate filter	70F
Code 4U7	Start/stop voltage dip protection	53F
Code B03	ECO start/stop function	75F
Code B03	ECO start/stop function	53G
Code MEO4	Hybrid drive 20 KW VARIANT	53G
Code U42	BlueTEC diesel exhaust treatment	66F
Code U77	BlueTEC (SCR) diesel exhaust treatment	66F
F32	Front electrical prefuse box	56L
F32f151	Prefuse 151	56L
F32f154	Prefuse 154	55K
63/2	Oxygen sensor upstream of catalytic converter	55K
63/2x1	Electrical connector for oxygen sensor upstream of catalytic converter	18L
M1	Starter	47L
M4/7	Combustion engine and air conditioning with integrated control fan motor	60L
N10/1	Front SAM control unit with fuse and relay module	27L
N10/1	Front SAM control unit with fuse and relay module	33L
N10/1	Front SAM control unit with fuse and relay module	38L
N10/1f22	Fuse 22	22L
N10/1f22	Fuse 22	36L
N10/1f23	Fuse 23	24L
N10/1f23	Fuse 23	35L
N10/1f24	Fuse 24	37L
N10/1f24	Fuse 24	21L
N10/1f27	Fuse 27	25L
N10/1f6	Fuse 6	25L
N10/1f7	Fuse 7	34L
N118	Fuel pump control unit	3L
N2/10	Supplemental restraint system control unit	51L
N3/9	CDI control unit	4A

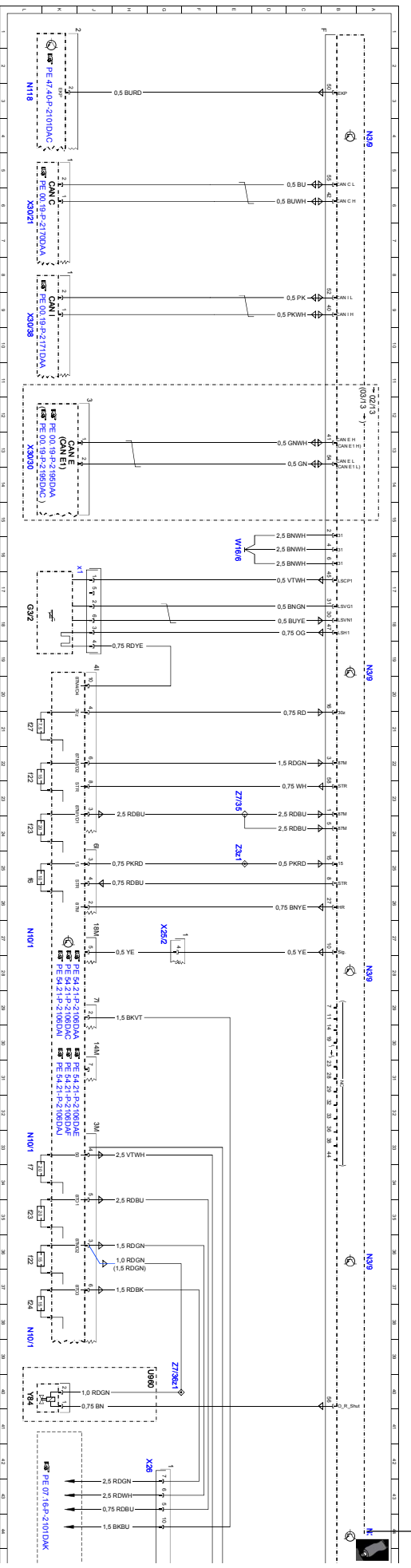
**Document number :** pe07.16-p-2101-97da1  
**Document title :** Wiring diagram for common rail diesel injection (GD1) control unit

<b>Code :</b>	<b>Designation :</b>	<b>Position :</b>
N3/9	GD1 control unit	19A
N3/9	GD1 control unit	28A
N3/9	GD1 control unit	36A
N3/9	GD1 control unit	44A
N3/9	GD1 control unit	52A
N3/9	GD1 control unit	61A
N3/9	GD1 control unit	76A
N3/9	GD1 control unit	68A
S40/3	Clutch pedal switch	64L
S40/5	Start enable clutch pedal switch	80L
U12	Valid for left-hand drive vehicles	63G
U12	Valid for left-hand drive vehicles	79G
U13	Valid for right-hand drive vehicles	63H
U13	Valid for right-hand drive vehicles	79H
U24	Valid for manual transmission	63F
U24	Valid for manual transmission	75F
U240	Valid for all except ECO start/stop function	53F
U62	Valid for 4MATIC	82F
U960	Valid for radiator shutters	39G
W15/1	Right footwell ground point	64H
W15/1	Right footwell ground point	81H
W15/2	Left footwell ground point	64H
W15/2	Left footwell ground point	81G
W16/6	Left major assembly compartment ground point	16E
W9	Left front ground point (at lamp unit)	59H
X220	New Manual Transmission zero position sensor electrical connector	76H
X25/2	Engine compartment/interior electrical connector	27G
X25/2	Engine compartment/interior electrical connector	60E
X26	Interior and engine wiring harness electrical connector	42H
X26	Interior and engine wiring harness electrical connector	71H
X30/21	Drive train CAN voltage distributor electrical connector	6L
X30/30	Vehicle floor chassis CAN voltage distributor electrical connector	13L
X30/38	Potential distributor electrical connector (CAN 1)	9L
Y123	Left switchable engine mount	83L
Y123/1	Right switchable engine mount	85L
Y84	Radiator shutters actuator	40L
Z321	Tml. 15 connector sleeve	25E
Z51/19	Engine management crash signal connector sleeve	51E
Z57/17	Engine mount connector sleeve in engine compartment	84G

**Document number :** pe07.16-p-2101-97dal

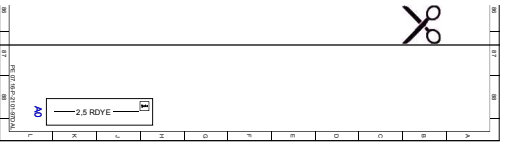
**Document title :** Wiring diagram for common rail diesel injection (CDI) control unit

<b>Code :</b>	<b>Designation :</b>	<b>Position :</b>
Z6/8	Sensor ground connector sleeve	74E
Z6/8z1	Sensor ground line connector sleeve	69E
Z7/35	Circuit 87 M1e connector sleeve	23E
Z7/36	Circuit 87 M2e connector sleeve	74E
Z7/36z1	Circuit 87 M2e connector sleeve	82G
Z7/36z1	Circuit 87 M2e connector sleeve	40G



▲ Affix page 2 here ▼





*Cut here*