

**Document number:** pe07.16-p-2101-97dak  
**Document title:** Wiring diagram for common rail diesel injection (CDI) control unit

<b>Code:</b>	<b>Designation:</b>	<b>Position:</b>
A0	Color code key	88L
A16/1	Right knock sensor	2L
A16/4	Front knock sensor	4L
B1	Oil temperature sensor	10L
B11/4	Coolant temperature sensor	11L
B17/8	Charge air temperature sensor	21L
B19/11	Temperature sensor upstream of turbocharger	19L
B2/5	Hot film mass air flow sensor	8L
B2/5b1	Intake air temperature sensor	9L
B28/5	Pressure sensor downstream of air filter	24L
B4/6	Rail pressure sensor	27L
B4/6	Rail pressure sensor	31L
B5/1	Boost pressure sensor	52L
B5/1	Boost pressure sensor	54L
B5/4	Low-pressure turbocharger boost pressure sensor	56L
B50	Fuel temperature sensor	20L
B6/1	Camshaft Hall sensor	35L
B60	Exhaust pressure sensor	23L
B70	Crankshaft Hall sensor	29L
L5	Crankshaft position sensor	33L
LIN C1	Drive train LIN	76B
M16/6	Throttle valve actuator	15L
M55	Intake port shutoff actuator motor	13L
M10/1	Front SAM control unit with fuse and relay module	71L
N3/9	CDI control unit	5A
N3/9	CDI control unit	12A
N3/9	CDI control unit	28A
N3/9	CDI control unit	19A
N3/9	CDI control unit	36A
N3/9	CDI control unit	52A
N3/9	CDI control unit	44A
N3/9	CDI control unit	60A
N3/9	CDI control unit	68A
N3/9	CDI control unit	80A
R39/1	CDI control unit	7L
R48	Vent line heater element	6L
S43	Coolant thermostat heating element	34L
U240	Oil level check switch	15H
U240	Valid for all except ECO start/stop function	14H
U240	Valid for all except ECO start/stop function	

**Document number :** pe07.16-p-2101-97dak

**Document title :** Wiring diagram for common rail diesel injection (GD1) control unit

<b>Code :</b>	<b>Designation :</b>	<b>Position :</b>
U240	Valid for all except E00 start/stop function	12H
U240	Valid for all except E00 start/stop function	11H
U240	Valid for all except E00 start/stop function	11H
U240	Valid for all except E00 start/stop function	9H
U240	Valid for all except E00 start/stop function	24H
U240	Valid for all except E00 start/stop function	23H
U240	Valid for all except E00 start/stop function	24H
U240	Valid for all except E00 start/stop function	22H
U240	Valid for all except E00 start/stop function	21H
U240	Valid for all except E00 start/stop function	19H
U240	Valid for all except E00 start/stop function	20H
U240	Valid for all except E00 start/stop function	17H
U240	Valid for all except E00 start/stop function	17H
U240	Valid for all except E00 start/stop function	16H
U240	Valid for all except E00 start/stop function	36J
U240	Valid for all except E00 start/stop function	8E
U240	Valid for all except E00 start/stop function	8E
U240	Valid for all except E00 start/stop function	13E
U240	Valid for all except E00 start/stop function	11E
U240	Valid for all except E00 start/stop function	13E
U240	Valid for all except E00 start/stop function	15E
U240	Valid for all except E00 start/stop function	15E
U240	Valid for all except E00 start/stop function	15E
U240	Valid for all except E00 start/stop function	13E
U240	Valid for all except E00 start/stop function	16E
U240	Valid for all except E00 start/stop function	20E
U240	Valid for all except E00 start/stop function	18E
U240	Valid for all except E00 start/stop function	18E
U240	Valid for all except E00 start/stop function	18E
U240	Valid for all except E00 start/stop function	18E
U240	Valid for all except E00 start/stop function	24E
U240	Valid for all except E00 start/stop function	22E
U240	Valid for all except E00 start/stop function	35E
U240	Valid for all except E00 start/stop function	30C
U240	Valid for all except E00 start/stop function	53J
U252	Valid for E00 start/stop function	10H
U252	Valid for E00 start/stop function	25C
U252	Valid for E00 start/stop function	36D
U252	Valid for E00 start/stop function	37A
U252	Valid for E00 start/stop function	73F

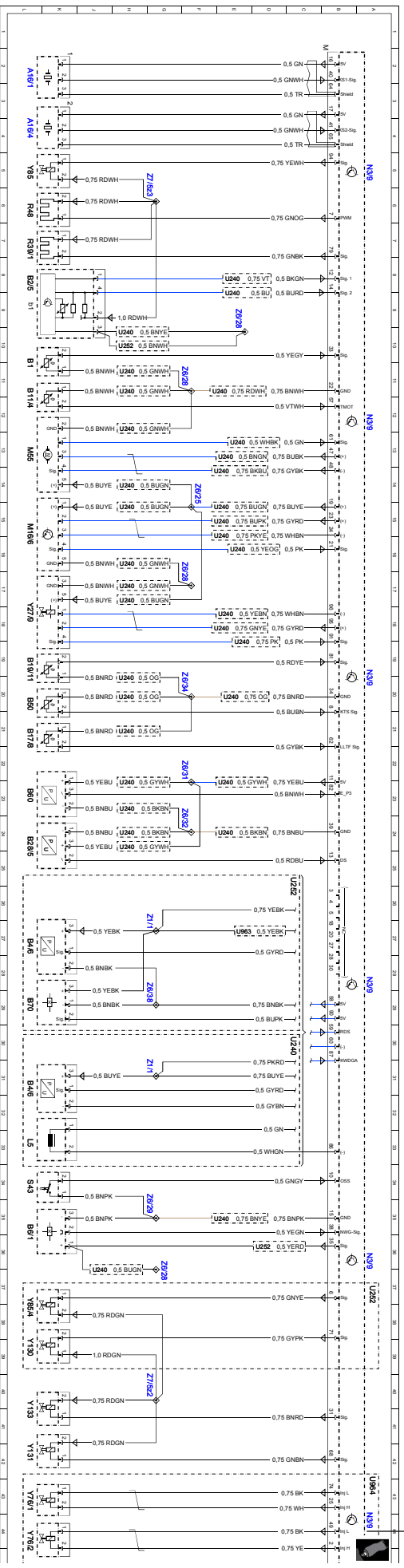
**Document number:** pe07.16-p-2101-97dak  
**Document title:** Wiring diagram for common rail diesel injection (GD1) control unit

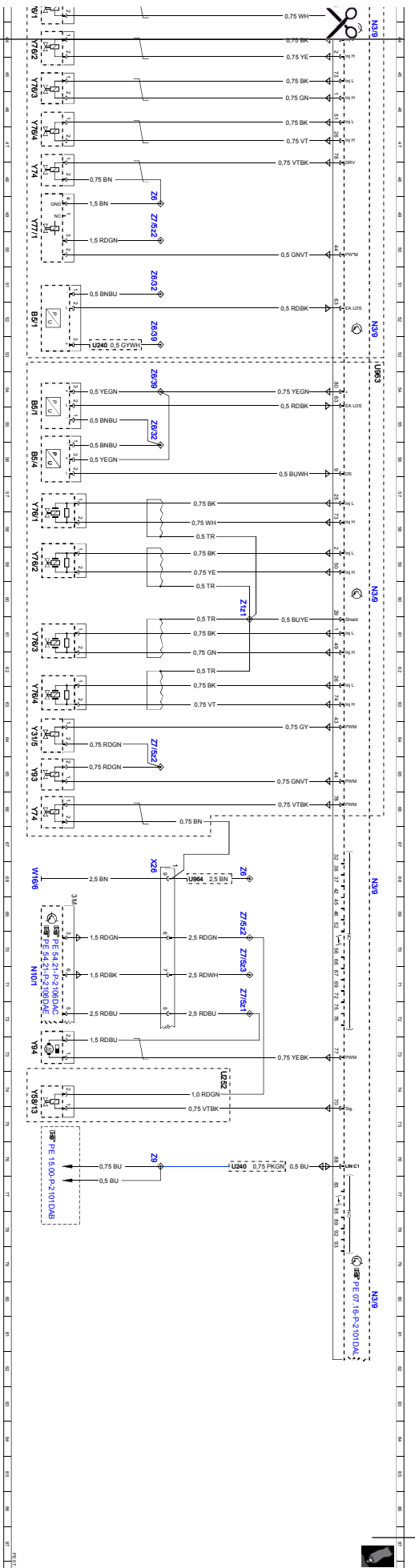
<b>Code:</b>	<b>Designation:</b>	<b>Position:</b>
U963	Valid for piezo fuel injector	53A
U963	Valid for piezo fuel injector	27E
U964	Valid for all except piezo fuel injector	68F
U964	Valid for all except piezo fuel injector	42A
W16/6	Right major assembly compartment ground point	68L
X26	Interior and engine wiring harness electrical connector	68H
Y130	Engine oil pump valve	39L
Y131	Oil spray nozzle shutoff valve	42L
Y133	Coolant pump switchover valve	40L
Y27/9	Exhaust gas recirculation actuator	18L
Y31/5	Boost pressure control pressure transducer	64L
Y58/13	Heat exchanger shutoff valve	74L
Y74	Pressure regulator valve	48L
Y74	Pressure regulator valve	66L
Y76/1	Cylinder 1 fuel injector	43L
Y76/1	Cylinder 1 fuel injector	57L
Y76/2	Cylinder 2 fuel injector	44L
Y76/2	Cylinder 2 fuel injector	59L
Y76/3	Cylinder 3 fuel injector	45L
Y76/3	Cylinder 3 fuel injector	61L
Y76/4	Cylinder 4 fuel injector	46L
Y76/4	Cylinder 4 fuel injector	63L
Y77/1	Boost pressure positioner	49L
Y85	Exhaust gas recirculation cooler bypass switchover valve	5L
Y85/4	Exhaust gas recirculation bypass flap electronic vacuum regulator	37L
Y93	Boost pressure control flap pressure transducer	65L
Y94	Quantity control valve	73L
Z1/1	Connector sleeve / sensor	26G
Z1/1	Connector sleeve / sensor	31G
Z1z1	Connector sleeve 3 in wiring harness	60E
Z6	Circuit 31 connector sleeve	48G
Z6	Circuit 31 connector sleeve	68E
Z6/25	Sensor voltage supply connector sleeve	14F
Z6/28	Sensor ground connector sleeve	11F
Z6/28	Sensor ground connector sleeve	16F
Z6/28	Sensor ground connector sleeve	37G
Z6/28	Sensor ground connector sleeve	9E
Z6/29	Sensor ground connector sleeve	35G
Z6/31	Sensor voltage supply connector sleeve	22F

**Document number :** pe07.16-p-2101-97dak

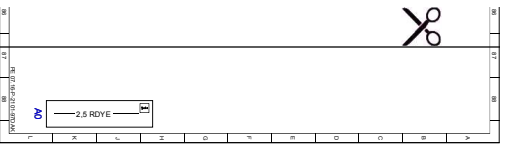
**Document title :** Wiring diagram for common rail diesel injection (CDI) control unit

<b>Code :</b>	<b>Designation :</b>	<b>Position :</b>
Z6/32	Sensor ground connector sleeve	24F
Z6/32	Sensor ground connector sleeve	51G
Z6/32	Sensor ground connector sleeve	55G
Z6/34	Sensor ground connector sleeve	20F
Z6/38	Sensor ground connector sleeve	29G
Z6/39	Sensor voltage connector sleeve	52G
Z6/39	Sensor voltage connector sleeve	54G
Z1/5z1	Circuit 87 connector sleeve	71E
Z1/5z2	Circuit 87 connector sleeve	40G
Z1/5z2	Circuit 87 connector sleeve	49G
Z1/5z2	Circuit 87 connector sleeve	64G
Z1/5z2	Circuit 87 connector sleeve	69E
Z1/5z3	Circuit 87 connector sleeve	5G
Z1/5z3	Circuit 87 connector sleeve	70E
Z9	Connector sleeve 1	76G





Cut here



*Cut here*