

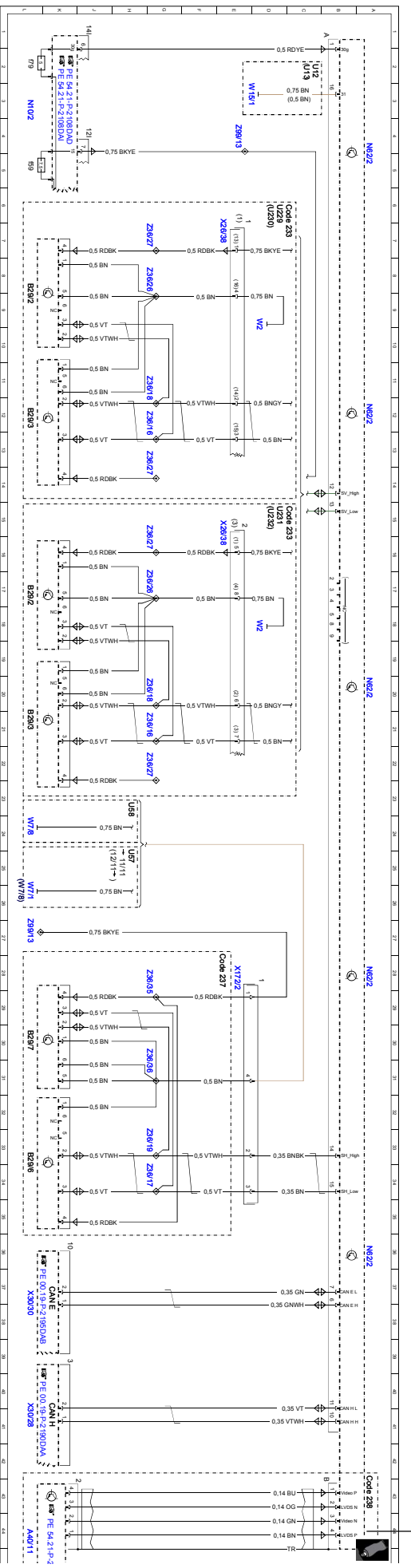
Document number: pe30.30-p-2103-97daa
Document title: Wiring diagram for the video and radar sensor system control unit

Code:	Designation:	Position:
A0	Color code key	48L
A40/11	MultiFunction camera	44L
B29/2	DISTRONIC sensor (DTR) / left front bumper	8L
B29/2	DISTRONIC sensor (DTR) / left front bumper	17L
B29/3	DISTRONIC sensor (DTR) / right front bumper	12L
B29/3	DISTRONIC sensor (DTR) / right front bumper	21L
B29/6	Left rear bumper radar sensor	33L
B29/7	Right rear bumper radar sensor	30L
CAN E	Chassis CAN	37K
CAN H	Vehicle dynamics CAN	41K
Code 233	DISTRONIC PLUS	6D
Code 237	DISTRONIC PLUS	15C
Code 238	DISTRONIC PLUS	27E
N10/2	Active Blind Spot Assist	42A
N10/2f59	Active Lane Keeping Assist	3L
N10/2f79	Rear SAM control unit with fuse and relay module	5L
N62/2	Fuse 59	2L
N62/2	Fuse 79	4A
N62/2	Video and radar sensor system control unit	12A
N62/2	Video and radar sensor system control unit	20A
N62/2	Video and radar sensor system control unit	28A
N62/2	Video and radar sensor system control unit	36A
U12	Valid for left-hand drive vehicles	2C
U13	Valid for right-hand drive vehicles	2C
U229	Valid for short range radar with active Park Assist without pedestrian protection	6D
U230	Valid for short range radar with active Park Assist and pedestrian protection	6D
U231	Valid for short range radar with pedestrian protection without active Park Assist	15D
U232	Valid for short range radar without active Park Assist	15D
U57	Valid for model 212.2	24H
U58	Valid for model 212.0/1	23H
W15/1	Right footwell ground point	3E
W2	Right front ground point at lamp unit	9D
W7/1	Right front ground point at lamp unit	18D
W7/8	Right taillamp trunk ground point	26L
W7/8	Right wheelhouse trunk ground point	25L
X172/2	Right wheelhouse trunk ground point	24L
X26/38	Rear bumper radar sensors electrical connector	28E
X26/38	Front bumper and frame wiring harness electrical connector	7E
X26/38	Front bumper and frame wiring harness electrical connector	15E

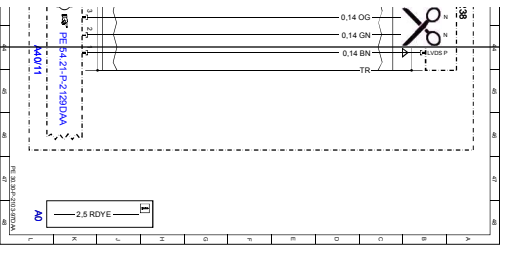
Document number : pe30_30-p-2103-97daa

Document title : Wiring diagram for the video and radar sensor system control unit

Code :	Designation :	Position :
X30/28	Vehicle dynamics CAN voltage distributor electrical connector	41L
X30/30	Vehicle floor chassis CAN voltage distributor electrical connector	37L
Z36/16	Front sensor CAN connector sleeve	126
Z36/16	Front sensor CAN connector sleeve	216
Z36/17	Rear sensor CAN connector sleeve	346
Z36/18	Front sensor CAN connector sleeve	116
Z36/18	Front sensor CAN connector sleeve	206
Z36/19	Rear sensor CAN connector sleeve	336
Z36/26	Front DISTRONIC PLUS sensor ground connector sleeve	86
Z36/26	Front DISTRONIC PLUS sensor ground connector sleeve	176
Z36/27	DISTRONIC front voltage supply connector sleeve	76
Z36/27	DISTRONIC front voltage supply connector sleeve	136
Z36/27	DISTRONIC front voltage supply connector sleeve	166
Z36/27	DISTRONIC front voltage supply connector sleeve	226
Z36/27	DISTRONIC front voltage supply connector sleeve	286
Z36/35	Rear radar sensor's sensor power supply connector sleeve	316
Z36/36	Rear radar sensor's sensor ground connector sleeve	4E
Z99/13	Radar sensors control unit circuit 87 connector sleeve	27L
Z99/13	Radar sensors control unit circuit 87 connector sleeve	27L



▲ Affix page 2 here ▲



Cut here