



# **What's New for MY2017 E-Class Sedan & Wagon (W/S213)**

**MBC Product Management**

**Date of Revision: October 13, 2016**

## **Legal**

All illustrations and specifications contained in this guide are based on the latest product information available at the time of publication and is intended for internal use only. Text and images contained herein are all subject to copyright and other intellectual property protection. This guide may not be distributed, modified, transmitted, re-posted or used for public or commercial purposes without the written permission of Mercedes-Benz Canada Inc. This guide may also contain materials that are subject to the copyright rights of their providers. Mercedes-Benz Canada Inc. reserves the right to make changes at any time, without notice, to colours, materials, equipment, specifications and models. Any variations in colours shown are due to variation between monitors and printers. Illustrations may include test situations. Some vehicles may be shown with non-Canadian equipment. Some vehicles are shown with optional equipment. All other registered trademarks or trademarks are property of their respective owners.

# What's New for MY17

## Models Available:

- **E 300 4MATIC Sedan** – SoP May 2016
- **E 400 4MATIC Sedan** – SoP August 2016
- **E 400 4MATIC Wagon** – SoP November 2016
- **Mercedes-AMG E 43 4MATIC Sedan**– SoP November 2016

## Overview:

Mercedes-Benz is taking a big step into the future with the new E-Class. The tenth-generation of the E-Class sedan delivers stylish highlights with its distinct, emotional design and high-grade interior. The new E-Class also marks the world premiere of numerous technical innovations, enabling enhanced comfort, a new level of safe driving, a new dimension in driver assistance and a new infotainment and control system. A new, optionally available AIR BODY CONTROL air suspension ensures outstanding ride comfort and driving dynamics. The sum total of these innovations makes the E-Class the most intelligent luxury sedan in the world.



# Key Highlights:

- Efficient new 4-/6- cylinder turbocharged engines
- +43 mm longer vehicle length
- New generation vehicle key
- Interior room is at the same high level as the preceding series, in spite of slightly reduced vehicle height (-3 mm)
- More legroom for the rear passenger due to +65 mm longer wheelbase
- Sportily elegant design with coupé-like elements
- A contemporary interpretation of luxury in the interior, which sets standards with regard to material and workmanship quality
- Energizing comfort, including a new user interface with intuitive touchpad control and massage programs familiar from the S-Class
- Benchmark standard safety suite including Blind Spot Assist, Pre-Safe, Pre-Safe Sound, and Active Brake Assist
- Outstanding driving dynamics thanks to standard DYNAMIC SELECT and available AIR BODY CONTROL suspension
- Next generation connectivity and infotainment systems with steering wheel touch controls, Apple CarPlay, Google Android Auto and available NFC wireless phone charging
- Thanks to Mercedes-Benz Intelligent Drive, in the E-Class the vision of accident-free driving is one big step closer to reality
- Inspiring innovations with tangible assistance functions, such as DRIVE PILOT
- New design vehicle key



# Innovation:

## COMAND Online (NTG 5.5)

Standard for all models.



### Details

- High-resolution media display with a 12.3-inch screen diagonal
- Fast HDD navigation with 3D map display
- Mercedes-Benz Apps can also be used whilst driving
- WLAN/WiFi hotspot provides internet connections for up to 3 mobile devices
- Smartphone integration via Android Auto or Apple CarPlay
- Integrated USB Media Interface
- SIRIUS Satellite Radio with 3 month traffic and audio trial
- Bluetooth® hands-free and audio streaming
- SDHC card reader
- HD Radio tuner
- LINGUATRONIC voice-operated control system

# Innovation:

## Wireless Charging

Optional for all models.



### Details

- The wireless charging system functions with all mobile devices which support or can be upgraded to support the Qi standard.
  - The Apple iPhone does not natively support this Qi standard
- The charging surface is integrated into the storage tray in the front centre console and accepts compatible mobile phones with a screen diagonal of up to 6 inches.
- A connection is quickly established between the multimedia system and mobile phone via Near Field Communication (NFC) by touching the "NFC" logo. Telephone calls are then conducted automatically via the Bluetooth® hands-free system.

# Innovation: Touchpad

Standard on all models.



- Touchpad approx. 65 x 45 mm in size and comfortable handrest in one single component
- Additional full-fledged input option supplementing the COMAND Controller and LINGUATRONIC
- Recognition of both single and multi-finger gestures (multitouch), wiping movements, zoom gestures made by spreading and closing the fingers, also user handwriting
- Character recognition: the user is able to enter letters, characters and figures in natural handwriting
- 3 touch-sensitive keys are located behind the touch surface with which important functions can be quickly and directly operated (Back function, switch to Favourites menu, fast audio menu).
- Using the touch surface or keys gives users clear touch feedback
- The symbols are illuminated for orientation at night

# Innovation:

## Active Brake Assist (Formerly COLLISION PREVENTION ASSIST PLUS)

Standard for all models.



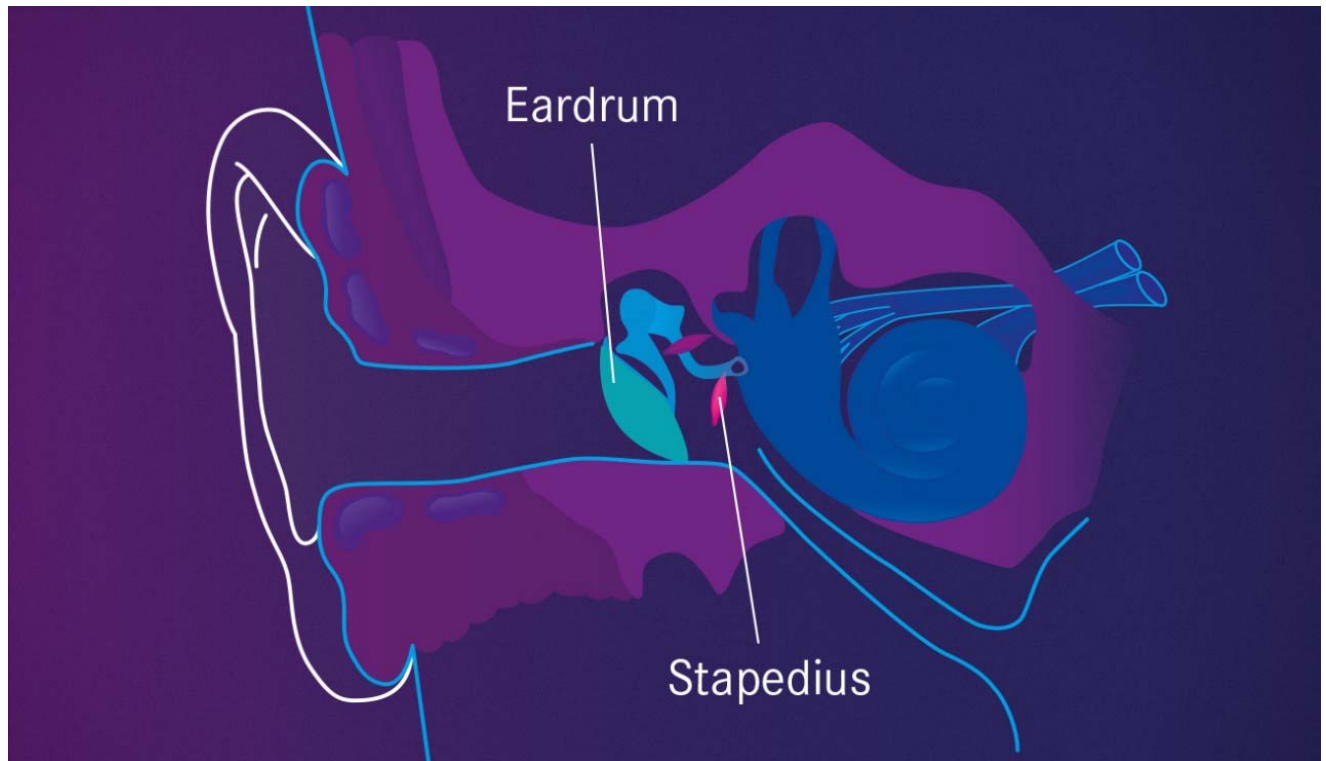
### Details

- Radar-based driving assistance system that can help prevent accidents with vehicles ahead and with crossing pedestrians or mitigate the consequences of accidents
- Combination of proximity warning, collision warning, on-demand braking assistance and autonomous braking function
- Visual warning in the form of warning lamp in the multifunction display if the safe distance is insufficient
- Additional audible warning if the distance continues to close rapidly and a collision is imminent
- If the driver initiates emergency braking – if necessary – increase in braking pressure by the on-demand braking assistance
- Initiation of autonomous braking if the driver fails to react prior to an impending collision
- Visual and audible warning plus almost simultaneous autonomous emergency braking if an impending collision with a crossing pedestrian is detected



## Innovation: PRE-SAFE Sound

Standard for all models.



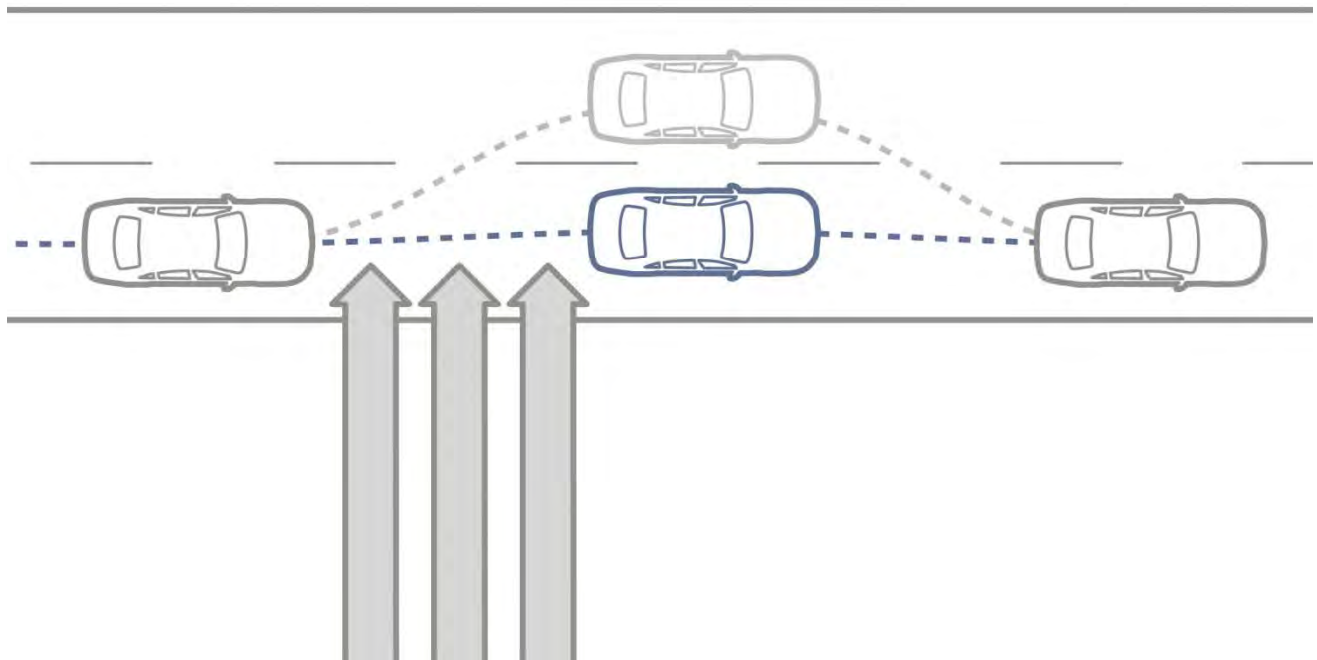
### Details

Part of PRE-SAFE, PRE-SAFE® Sound is acoustic occupant preconditioning system which can reduce the effects of accident noises on the hearing. When the PRE-SAFE® system recognizes a certain dangerous situation, the onboard sound system emits a brief rushing sound to precondition the hearing. The natural reflex mechanism of the stapedius muscle enables the inner ear to rapidly prepare for accident-induced high sound pressures.

# Innovation:

## Crosswind Assist

Standard on all models



- Crosswind Assist is active at speeds of 80 km/h and up
- Crosswind Assist aids the driver by reducing the vehicle's lateral drift substantially in windy driving conditions
- Crosswind Assist is integrated into the ESP® sensor system and enables the timely detection of gusts of crosswind
- Automatic brake intervention on the wheels on the side of the vehicle facing the wind results in a yaw motion which counteracts the crosswind

# Innovation:

## 9G-TRONIC Transmission

Standard on all models.



Featuring nine forward gears, this automatic transmission takes efficiency, comfort and dynamism to a completely new level. It is the world's first 9-speed automatic transmission with hydrodynamic torque converter in the premium segment. Its high efficiency helps to reduce fuel consumption.

- The ECO Start/Stop Function ensures that the engine is switched off at traffic lights to reduce fuel consumption even further.
- Using the ergonomic DIRECT SELECT level on the steering column, the driver is able to change the transmission mode between P, R, N and D while keeping both hands on the steering wheel.
- Faster, smoother, and more efficient gear changes resulting in improved ride comfort and lower noise levels.

# Innovation:

## AIR BODY CONTROL

Optional on E 300 4MATIC & E 400 4MATIC. Standard on E 43 4MATIC.



The multi-chamber air suspension system works in unison with continuously variable damper control to ensure a very high standard of ride comfort and driving dynamics. The damping at each wheel is adapted to the current driving situation and road surface condition. This is done rapidly and precisely using separate valves for the compression and rebound of the dampers. The occupants enjoy a soft basic suspension setup and the secure feeling of high handling stability as speed increases. A harder spring rate, for example when cornering and braking, effectively reduces rolling movements.

Via DYNAMIC SELECT, AIR BODY CONTROL can be made more comfortable or sporty in the 4 stages "Comfort", "Comfort+", "Sport" and "Sport+". Thanks to the pneumatic all-round self-levelling suspension, the vehicle maintains a constant level irrespective of the load. The suspension can be raised by up to 35 mm to increase ground clearance. At speeds above 125 km/h the suspension is automatically lowered by 15 mm, helping to reduce aerodynamic drag and further improve handling stability.

# Innovation: DYNAMIC SELECT

Standard on all models.



At a touch of the DYNAMIC SELECT feature, drivers can choose between comfortable, sporty, and efficient driving styles, or their own individually defined style. Parameters such as engine, transmission and steering characteristics are adjusted according to the selected drive mode.

- **Comfort:** Standard setting, well-balanced and fuel-efficient
- **Eco:** Keeps fuel consumption as low as possible. Adjustments of the output of equipment (eg. Heated seats, air conditioning)
- **Sport:** Added agility and dynamism due to direct steering characteristics curve, sporty, taut suspension tuning, spontaneous throttle response and modified shift points.
- **Sport+:** Even sportier performance, the suspension (in conjunction with optional AIR BODY CONTROL) and drive system have an even more dynamic setup
- **Individual:** Individual parameters can be varied as required, using the controller and the configuration menu in the head unit

# Innovation: Headlamps

**Static LED High Performance Headlamps** (Standard for all models)



- All functions feature LED technology
- Distinctive look by day and night
- Excellent illumination of the road
- LED technology for low energy consumption, long operating life and pleasant white light that comes close to the spectrum of natural daylight
- LED tail lights featuring 72 LEDs per lamp

# Innovation: Headlamps

## Active MULTIBEAM Headlamps (Included in the Technology Package)



### Overview

- Enables extremely quick and precise electronically controlled adjustment of the headlamps to the current road and traffic conditions
- Automatic high-beam control by Adaptive Highbeam Assist
- Active light function for significantly better illumination of curves, in combination with the Intelligent Drive Assistance package the curve will already be illuminated prior to turning the steering wheel
- Automatically activated cornering lights
- Locator lighting greets the driver with an exceptional light display when unlocking the vehicle
- LED tail lights featuring 72 LEDs per lamp

# Innovation: Head-Up Display

Included in the Technology package.



The head-up display comprises a full-colour display module with a resolution of 480 x 240 pixels and back-lit by high-power LEDs.

- Key driver information at a glance (eg. navigation tips, incoming calls, speed, settings for cruise control, assistance system messages) without the driver having to take their eyes off the road
- Projection of virtual image measuring approximately 21 x 7 cm into the driver's field of vision, which appears to float around 2m in front
- Presentation of information in high-resolution and in colour, making it clearly legible even on sunny days and at night
- Height position of the image, brightness and displayed content can be changed individually via a menu in the instrument cluster



# Audio Systems

## Burmester Surround Sound (Included in the Premium Package)



### Overview

- 13 high-performance speakers
- Four tweeters, one in each door
- Four mid-range speakers, one in each door
- Three broadband speakers, one in the dashboard and two in the parcel shelf
- Two Frontbass speakers, one in each front footwell
- 9-channel DSP amplifier with impressive sound delivery thanks to a total output of 590 W (7 x 50 W and 2 x 120 W)
- Combination of digital and analogue filter elements
- Sound optimisation for the front and rear seats (Front/Rear)
- Noise compensation (VNC)
- Surround function for virtual surround sound
- Support for popular multi-channel formats such as Dolby Digital 5.1/DTS for example, for true surround sound

# Innovation:

## AIR BALANCE Package

Optional on all E-Class models



The vehicle interior can be fragranced to taste with the AIR BALANCE package. There is a choice of four high-quality interior fragrances according to personal preference and mood. In addition, the air quality can be improved by oxygen ionization and optimized filtering of the incoming and recirculating air.

### Features:

- Fragrance generator in the glove compartment, changeable by exchanging the perfume flask
- Discreet fragrance with adjustable intensity
- No permanent change in the interior smell or deposition of perfume molecules on clothing
- Oxygen ionization for improving air quality and reducing viruses, bacteria or spores
- Improved filter system removes odors and particulate from outside air

# Innovation:

## Parking Pilot with Parking Assist PARKTRONIC

Optional on E 300 4MATIC, Standard on E 400 4MATIC, E 43 4MATIC



### Features:

- Makes things easier for the driver by showing located parking spaces
- Comfortable process for entering and exiting parallel and perpendicular parking spaces thanks to active steering intervention, including speed control, autonomous braking at the ends of parking spaces and automatic gear changes
- Driver selectable option of entering parking space front-in or back-in
- Parking possible even in tight parking spaces and in several maneuvers
- Visual and audible warning if obstacles are detected at the front, side or rear of the vehicle up to a speed of 10 km/h and, consequently, reduction in the risk of damage when maneuvering
- If crossing traffic is detected when reversing out of a parking space, Rear Cross Traffic Alert can emit a visual and audible warning and, if necessary, initiate emergency braking automatically (only in conjunction with Intelligent Drive package)
- Drive Away Assist can warn the driver if, when driving away, there is a risk of a collision with detected objects due to mixing up the accelerator and brake pedals or due to an incorrect position of the DIRECT SELECT selector lever
- The driver can intervene at any time and, by doing so, deactivate the systems concerned

# Innovation:

## Intelligent Drive - Overview

Optional on all models.



### Details

More comfort and less stress for the driver, and therefore more safety for all road users, by virtue of e.g. semi-automated driving, autonomous braking and active assistance during evasive and braking manoeuvres. Mercedes-Benz refers to this as "Intelligent Drive".

### Features

- DRIVE PILOT (Includes Steering Pilot with Active Lane-change Assistant, Active Emergency Stop Assist, Distance Pilot DISTRONIC)
- Active Brake Assist with Cross Traffic Function
- Evasive Steering Assist
- PRE-SAFE PLUS
- PRE-SAFE IMPULSE Side
- Active Lane Keeping
- Active Blind Spot Assist
- Traffic Sign Assist (as of May 2016 production)

# Innovation:

## Intelligent Drive - Traffic Sign Assist

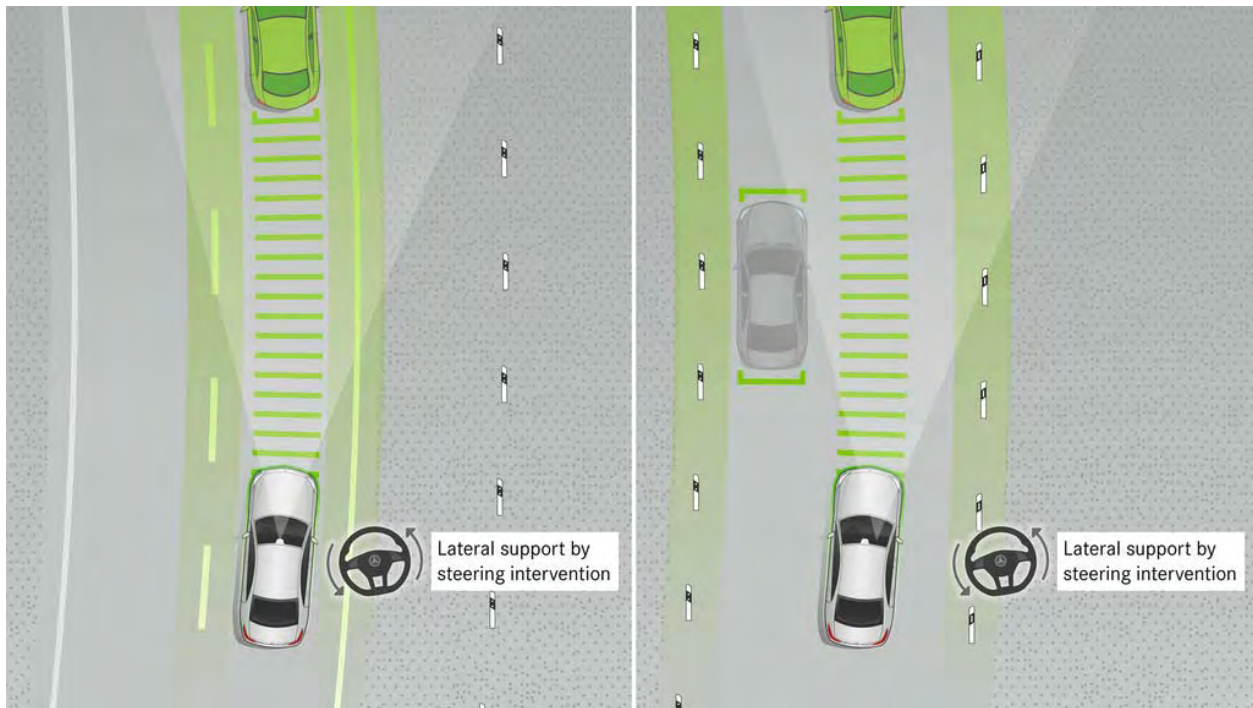
Included with Intelligent Drive from May 2016 Production.



### Details

- Driving assistance system able to detect and recognize speed limits, no-passing and wrong-way signs
- Detection of traffic signs by means of a multifunction camera and display in the instrument cluster in real-time and comparison against the navigation data
- Helps the driver to comply with traffic regulations, thus enhancing road safety
- Wrong-way warning function: if the driver attempts to enter a street or highway against the posted mandatory direction, for instance, a highway on ramp, a visual warning is displayed in the instrument cluster and an acoustic warning is sounded.

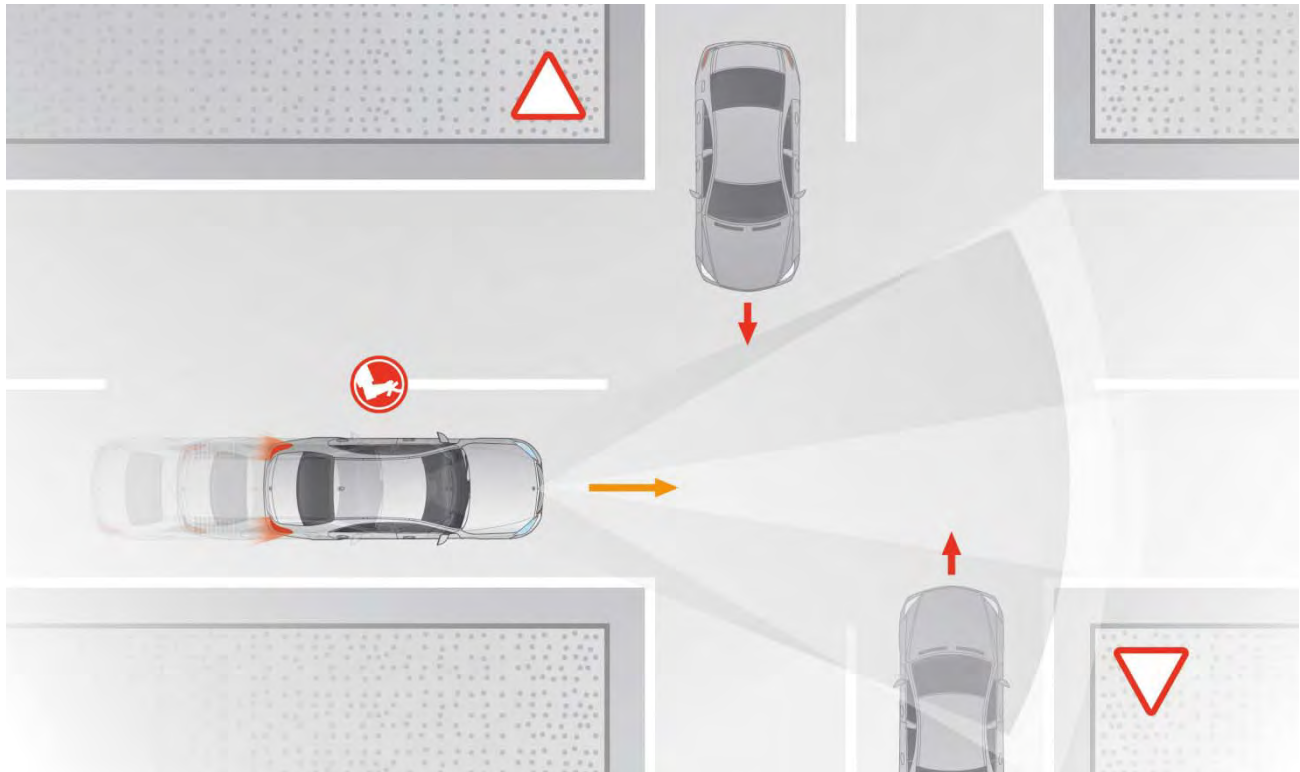
## Innovation: Intelligent Drive – DRIVE PILOT



### Details

- Steering Pilot generates steering torque which helps the driver to keep the vehicle in the centre of its lane on straight roads and slight bends, taking its guidance from vehicles ahead and lane markings
- The Active Lane-change Assistant is able to assist the driver with changing lanes by means of steering torque, as soon as the driver initiates the change by activating the direction indicator and the system does not detect another vehicle in the adjacent lane
- Extended tolerance for the Hands-off Warning of the Steering Pilot with intelligent Hands-on Detection
- Active Emergency Stop Assist: brakes the vehicle to a controlled stop if the system detects that the driver is permanently distracted or is no longer able to operate the vehicle
- The Distance Pilot DISTRONIC works in the speed range from 0 to 210 km/h, also reacting to stationary vehicles at low speeds
- Extended automatic moving off again in stop-and-go traffic after being stationary for up to 3 s, when the vehicle has been braked by the Distance Pilot DISTRONIC

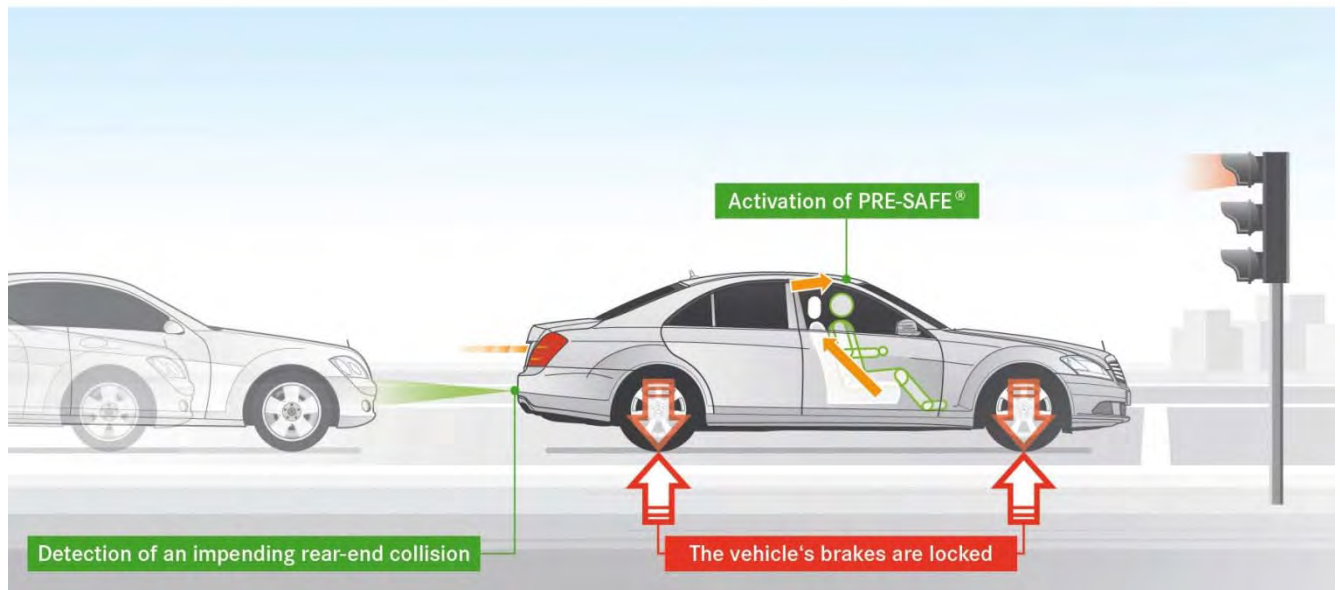
## Innovation: Intelligent Drive – Active Brake Assist with Cross-Traffic function



### Details

- Active Brake Assist with Cross-traffic function is able to reduce the risk of rear-end collisions and accidents at road junctions
- Continuous monitoring of the traffic situation ahead of the vehicle by means of radar sensors and a 3D stereo camera
- Vehicles travelling ahead are registered up to a speed of 250 km/h
- Crossing traffic and bicyclists are registered up to a speed of 72 km/h, as well as pedestrians who are stationary or moving slowly in the path of the vehicle
- When the danger of a collision is recognized, the system gives a visual warning in the instrument cluster and an audible warning
- If the driver firmly applies the brakes, the system calculates the brake pressure that would be needed to prevent a collision
- If a collision cannot be prevented, the impact speed is reduced as much as possible by emergency braking

## Innovation: Intelligent Drive – PRE-SAFE PLUS

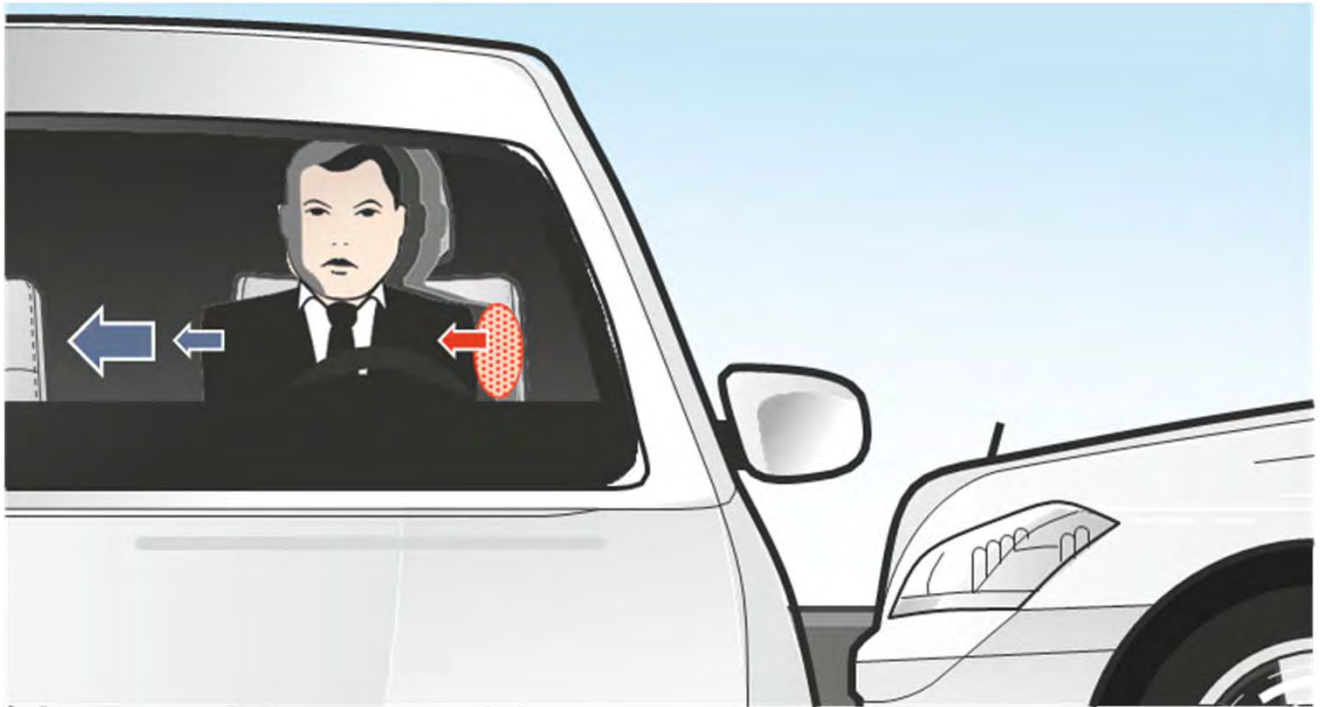


### Details

- Occupant protection system to initiate preventive protection measures before an impending rear-end collision when stationary
- Uses radar sensors in the rear bumper to monitor the traffic behind the vehicle
- Locks the brakes of the stationary vehicle if the driver has indicated a wish to remain stationary, e.g. by keeping the brake pedal depressed, HOLD function activated or selector lever in position "P"
- Initiates occupant protection measures such as reversible belt tensioning
- Maintains the increased brake pressure for two seconds after an impact to prevent the vehicle from rolling forward e.g. at a intersection, while restoring maneuverability after the impact if possible



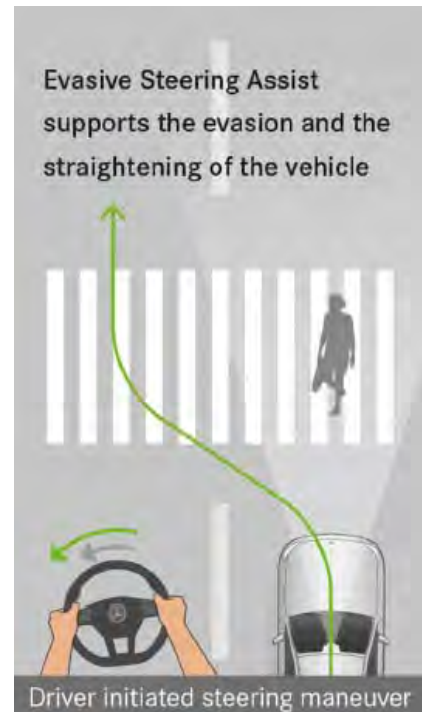
## Innovation: Intelligent Drive – PRE-SAFE Impulse Side



### Details

- PRE-SAFE® Impulse Side initiates preventive protective measures against an impending side impact, supplementing the measures taken by PRE-SAFE® and PRE-SAFE® PLUS
- In the event of a side impact, PRE-SAFE® Impulse Side can have a positive effect by increasing the distance between the occupant and the door, and at the same time reducing the relative speeds between the side structure and the occupant's torso
- In the event of a recognized, unavoidable side collision, the system can give the driver or front passenger a slight push towards the centre of the vehicle on the side facing the impact
- This lateral impulse is initiated by very rapid inflation of an air chamber in the seat bolster
- The system uses the existing vehicle sensors (e.g. radar) to monitor the surroundings to the side of the vehicle

## Innovation: Intelligent Drive – Evasive Steering Assist



### Details

- Supports driver initiated evasion maneuvers with additional steering torque
- Supplements Active Brake Assist if driver instinctively or spontaneously initiates steering maneuver around pedestrian in path of travel
- System supports evasion maneuver and straightening out of vehicle
- System does not initiate automatic evasive steering

## E 300 4MATIC Engine:



### **M274 2.0-litre turbocharged I4**

- Key features:
  - 241 horsepower (@ 5,500 rpm)
  - 273 lb-ft of torque (@1,300 – 4,000 rpm)
  - 0-100 km/h in 6.4 seconds
  - ECO stop-start technology
  - 4 valves per cylinder
  - Direct injection with fast responding piezo injectors and multi-spark ignition system
  - Air to water intercooler
  - Single pipe turbocharger

# E 400 4MATIC Engine:



## M276 3.0-litre turbocharged V6

- Key features:
  - 329 horsepower (@ 5,250 – 6,000 rpm)
  - 354 lb-ft of torque (@1,200 – 4,000 rpm)
  - 0-100 km/h in 5.2 seconds
  - ECO stop-start technology
  - Aluminum cylinder heads with 4 valves per cylinder and NANOSLIDE cylinder liners
  - Quiet chain drive system
  - One highly compact, fast-response exhaust gas turbocharger with wastegate control system per cylinder bank
  - A compact air/water intercooler ensures optimum charge air cooling and good thermodynamic efficiency.
  - Third-generation direct injection

# Mercedes-AMG E 43 4MATIC Engine:



## M276 3.0-litre V6 biturbo

- Key features:
  - 396 horsepower (@ 6,100 rpm)
  - 384 lb-ft of torque (@ 2,500 - 5,000 rpm)
  - 0-100 km/h in 4.6 seconds
  - ECO stop-start technology
  - 4 valves per cylinder
  - One highly compact, fast-response exhaust gas turbocharger with wastegate control system per cylinder bank
  - Direct injection with newly developed injection valves with piezo injectors for optimised fuel consumption, low emissions, and noise reduction
  - Spray-guided multiple injection with up to 3 injections per cycle
  - Air to water intercooler
  - Weight-saving design thanks to compact components and use of plastics

# E-Class Sport Exterior Design

(standard body styling on E 300 / E 400 4MATIC)



European images shown.



- AMG bodystyling comprising AMG front apron with chrome trim, distinctively sporty air intakes each with two louvres on the sides, AMG side sill panels and AMG diffuser-look rear apron with chrome trim
- Grille with integral Mercedes star and two louvres in matte iridium silver with chrome inserts
- "Mercedes-Benz" laurel wreath badge on the hood
- 18" 5-spoke wheels
- Beltline trim strip and window surrounds in polished aluminium
- Bezel on the B-pillars and bar on the rear side windows in high-gloss black
- Exhaust system with 2 tailpipe trim elements integrated into the bumper

# E-Class Luxury Package Exterior Design

(Available with Luxury Package on E 300 / E 400 4MATIC)



European images shown.



- Upgraded front bumper with chrome trim elements
- Radiator trim with 3 louvres in chrome with black inserts
- Mercedes star on hood
- 18" 5-twin-spoke alloy wheels
- Side skirts with chrome inserts
- Beltline trim strip and window surrounds in polished aluminium
- Rear bumper with insert in black diffuser-look finish and chrome trim
- Exhaust system with 2 tailpipe trim elements integrated into the bumper

# E 300 & E 400 4MATIC Interior Design



## Steering Wheel

The 3-spoke multifunction steering wheel receives unique Touch-Control buttons in the control panels on the left and right. Using these the instrument cluster and the multimedia system can be intuitively operated with horizontal and vertical swiping movements of the finger

## Centre Console

- COMAND Display with 31.2 cm (12.3-inch) screen
- 4 round air outlets with inserts and control buttons in silver chrome demonstrate the relationship with the S-Class
- Rocker switches for operating the air conditioning in silver chrome
- Control panel with surround in silver chrome e.g. with switch for the hazard warning lamps
- Analog clock in the centre of the control panel
- One piece trim from air conditioning controls to the armrest always in high-gloss black
- Larger stowage compartment with 12 V socket and cover with double cup holder
- Heated armrests in conjunction with Warmth Comfort package



# E-Class Interior Design



## Instrument Cluster

- Instrument cluster with 2 tube-shaped round dials
- Large multifunction display with a screen diagonal of 7 inches
- Bar graphs each with 12 LEDs for displaying tank fill level on the left and coolant temperature on the right, in the lower segment of the round dials
- Sport dials with electroplated inner phase rings and red needles



## Widescreen Cockpit (Included in Premium Package on E 300/400 4MATIC. Standard on E 43 4MATIC)

- Full digital instrument cluster screen with 12.3" display
- 3 selectable display styles "Classic", "Sport" and "Progressive"



# E-Class Interior Design



## Seats

The sculpted comfort front seats stand out from those of the preceding series at first glance. They combine a modern design with hallmark Mercedes-Benz suitability for long distances. Available Drive-Dynamic Multicontour front seats featuring 8 massage programs including Hot-Stone massage.



## Ambient Lighting

Includes LED ambient lighting around the Media Display (only in conjunction with the Technology package), dashboard trim, centre console trim, front and rear door panelling trim, front and rear door pockets, cup holder and stowage compartment lighting on the centre console, front and rear footwell lighting, and front and rear door handle recess lighting in 64 selectable colours.

# E-Class Wagon Interior Design



## Folding Bench Seat in Load Compartment (Standard)

The seat backrest is attached to the front load compartment floor cover, the cushion is attached to the rear one and can be folded up easily thanks to the folding mechanism. When not in use, the seat backrest and cushion can be retracted below the load compartment floor. Included are two three-point seat belts and extendable folding head rests. The folding bench seat is always in ARTICO man-made leather.

# E 300 4MATIC Sedan

## Standard Equipment Highlights

### Mechanical

- 2.0L Turbo I4 engine
- ECO Start/Stop
- 9G-TRONIC
- DYNAMIC SELECT
- Electromechanical steering (EPS)
- Electric parking brake

### Exterior

- 18" 5-spoke wheels
- Sunroof
- Static LED High Performance Headlamps
- AMG bodystyling with central radiator star

### Interior

- Analog instrument cluster with 7.0" screen
- Universal garage door remote
- 12.3" COMAND display
- SIRIUS Satellite Radio
- ARTICO leather upholstery
- THERMATIC automatic climate control
- 16-way power adjustable front seats
- Power lumbar support
- 3-spoke Nappa leather steering wheel with touch controls
- 40/20/40 Split folding rear seats
- Heated front seats
- KEYLESS-START

### Safety

- ATTENTION ASSIST
- Active Brake Assist
- PRE-SAFE
- Blind Spot Assist
- ADAPTIVE BRAKE with HOLD function
- Rain sensing windshield wipers
- Run-flat tires



# E 300 4MATIC Sedan

## Option Packages & Highlights

### PREMIUM PACKAGE

(MPP until 9/16 prod/MPX as of 9/16 prod)

- Rear View Camera
- Widescreen cockpit with 12.3" Digital Instrument Cluster Display
- Parking Pilot with Parking Assist PARKTRONIC
- Panoramic Sunroof
- Heated Steering Wheel
- Silver Shift Paddles
- Burmester Surround Sound (13 speakers, 590W)
- EASY-PACK Power Trunk Closer
- Hands-Free Access
- KEYLESS-GO
- Enhanced Engine Sound as of 9/16 prod

### EXCLUSIVE PACKAGE (MXP)

- Drive-Dynamic Multicontour Front Seats with Massage
- Luxury Front Headrests
- Warmth Comfort Package including Rapid Front Seat Heating and Heated Front Armrests
- Leather Upholstery
- Illuminated Door Sill Panels



# E 300 4MATIC Sedan

## Option Packages & Highlights

### TECHNOLOGY PACKAGE (MTP)

- Head-Up Display
- 360 Camera
- Adaptive Highbeam Assist (AHA)
- Active MULTIBEAM LED Lighting System



### LUXURY PACKAGE (MLX)

- Luxury Exterior Styling
- 18" Twin 5-Spoke Wheels
- Comfort Suspension



### INTELLIGENT DRIVE PACKAGE (IDP)

Temporarily blocked as of 1/17 production until 3/17 production

- DRIVE PILOT (Includes: Distance Pilot DISTRONIC PLUS, Steering Pilot with Active Lane-change Assistant and Active Emergency Stop Assist)
- Active Blind Spot Assist
- Active Lane Keeping Assist
- Active Brake Assist with cross-traffic function
- Evasive Steering Assist
- Traffic Sign Assist - Added as of May 2016 Production
- PRE-SAFE PLUS
- PRE-SAFE Impulse Side



# E 300 4MATIC Sedan

## Stand Alone Options

- Sun Protection Package (Includes power rear sunshade and manual side roller blinds)
- 18" AMG 5-Spoke Wheels
- 19" AMG 5-Twin-Spoke Wheels
- Climate Comfort Seats
- Windshield Heater – *delayed availability*
- AIR BALANCE Package
- Heated Rear Seats
- Wireless Phone Charging
- AIR BODY CONTROL Suspension



# E 400 4MATIC Sedan & Wagon

## Standard Equipment Highlights

### Mechanical

- 3.0L Biturbo V6 engine
- 9G-TRONIC
- DYNAMIC SELECT
- ECO Start/Stop & Electric parking brake
- Auto levelling rear air suspension (**wagon only**)

### Exterior

- 18" 5-spoke wheels
- Sunroof
- Static LED High Performance Headlamps
- AMG bodystyling with central radiator star
- Aluminum Roof Rails (**wagon only**)

### Interior

- Heated steering wheel & heated front seats
- Rear View Camera
- Silver Shift Paddles
- Analog instrument cluster with 7.0" screen
- 12.3" COMAND display
- Leather upholstery
- THERMATIC automatic climate control
- 16-way power adjustable front seats
- Nappa leather steering wheel with touch controls
- 40/20/40 Split folding rear seats
- Folding Rear-Facing 3rd Row Bench (**wagon only**)
- EASY-PACK Power Tailgate (**wagon only**)

### Safety

- ATTENTION ASSIST
- Active Brake Assist
- PRE-SAFE
- Blind Spot Assist
- ADAPTIVE BRAKE with HOLD function
- Rain sensing windshield wipers
- Run-flat tires
- Parking Pilot with Parking Assist PARKTRONIC





# E 400 4MATIC Sedan & Wagon

## Option Packages & Highlights

### PREMIUM PACKAGE (MPP)

- Widescreen cockpit with 12.3" Digital Instrument Cluster Display
- Panoramic Sunroof
- Burmester Surround Sound (13 speakers, 590W)
- EASY-PACK Power Trunk Closer (sedan only)
- Hands-Free Access
- KEYLESS-GO
- Warmth Comfort Package including Rapid Front Seat Heating and Heated Front Armrests
- Sun Protection Package - Includes power rear sunshade and manual side roller blinds (wagon only)



### EXCLUSIVE PACKAGE (MXP)

- Drive-Dynamic Multicontour Front Seats with Massage
- Exclusive Interior
- ARTICO Leather Dashboard
- Luxury Front Headrests
- Nappa Leather Upholstery
- Illuminated Door Sill Panels

# E 400 4MATIC Sedan & Wagon

## Option Packages & Highlights

### TECHNOLOGY PACKAGE (MTP)

- Head-Up Display
- 360 Camera
- Adaptive Highbeam Assist (AHA)
- Active MULTIBEAM LED Lighting System



### LUXURY PACKAGE (MLX)

- Luxury Exterior Styling
- 18" Twin 5-Spoke Wheels
- Comfort Suspension



### INTELLIGENT DRIVE PACKAGE (IDP)

Temporarily blocked as of 1/17 production until 3/17 production

- DRIVE PILOT (Includes: Distance Pilot DISTRONIC PLUS, Steering Pilot with Active Lane-change Assistant and Active Emergency Stop Assist)
- Active Blind Spot Assist
- Active Lane Keeping Assist
- Active Brake Assist with cross-traffic function
- Evasive Steering Assist
- Traffic Sign Assist - Added as of May 2016 Production
- PRE-SAFE PLUS
- PRE-SAFE Impulse Side



# E 400 4MATIC Sedan & Wagon

## Stand Alone Options

- 18" AMG 5-Spoke Wheels
- 19" AMG 5-Twin-Spoke Wheels
- Climate Comfort Seats
- Windshield Heater - *delayed availability*
- AIR BALANCE Package
- Heated Rear Seats
- Wireless Phone Charging
- AIR BODY CONTROL Suspension
- Burmester 3D High-End Surround Sound System (*sedan only*)
- Sun Protection Package - Includes power rear sunshade and manual side roller blinds (*sedan only*)



# Mercedes-AMG E 43 4MATIC Sedan

## Exterior Design



# Mercedes-AMG E 43 4MATIC Sedan

## Interior Design



12.3" Instrument Cluster Display standard

Sport steering wheel with touch controls

Optional Burmester Surround Sound System (Premium Package)

Standard Nappa Leather Upholstery in black with red stitching



40/20/40 Split folding rear seats

European model shown. Black seatbelts standard

# Mercedes-AMG E 43 4MATIC Sedan

## Standard Equipment Highlights

### Mechanical

- 3.0L Biturbo V6 engine
- ECO Start/Stop
- 9G-TRONIC
- AMG DYNAMIC SELECT
- AIR BODY CONTROL

### Exterior

- 19" AMG 5-Twin-Spoke Wheels
- Panoramic Sunroof
- Static LED High Performance Headlamps
- AMG bodystyling with central radiator star
- AMG Trunk Lid Spoiler

### Interior

- Rear View Camera
- Silver Shift Paddles
- 12.3" Instrument Cluster Display
- 12.3" COMAND display
- Nappa Leather Upholstery
- ARTICO Leather Dashboard
- THERMATIC automatic climate control
- 16-way power adjustable front seats
- Sport steering wheel with touch controls
- 40/20/40 Split folding rear seats
- Heated front seats
- Illuminated Door Sill Panels

### Safety

- ATTENTION ASSIST
- Active Brake Assist
- PRE-SAFE
- Blind Spot Assist
- ADAPTIVE BRAKE with HOLD function
- Rain sensing windshield wipers
- Run-flat tires
- Parking Pilot with Parking Assist PARKTRONIC



# Mercedes-AMG E 43 4MATIC Sedan

## Option Packages & Highlights

### PREMIUM PACKAGE (MPP)

- Sun Protection Package including roller sunblinds in rear doors (manual) and power rear window sunshade
- Warmth Comfort Package including heated front armrests and enhanced heated front seats
- Climate Comfort Front Seats
- Drive-Dynamic Multicontour Front Seats
- Burmester Surround Sound System
- Hands-free Access
- Heated Rear Seats
- EASY-PACK Power Trunk Closer
- KEYLESS-GO

### Technology Package (MTP)

- Head-up Display
- 360 Camera
- Active MULTIBEAM LED Lighting System
- Adaptive Highbeam Assist (AHA)



# Mercedes-AMG E 43 4MATIC Sedan

## Option Packages & Highlights

### AMG Driver's Package (ADP)

- 20" AMG Multi-Spoke Wheels
- Summer Performance Tires
- AMG Performance Steering Wheel



### INTELLIGENT DRIVE PACKAGE (IDP)

Temporarily blocked as of 1/17 production until 3/17 production

- DRIVE PILOT (Includes: Distance Pilot DISTRONIC PLUS, Steering Pilot with Active Lane-change Assistant and Active Emergency Stop Assist)
- Active Blind Spot Assist
- Active Lane Keeping Assist
- Active Brake Assist with cross-traffic function
- Evasive Steering Assist
- Traffic Sign Assist
- PRE-SAFE PLUS
- PRE-SAFE Impulse Side





# Mercedes-AMG E 43 4MATIC Sedan

## Stand Alone Options

- 20" AMG Twin-5 Spoke Bi-Colour Wheels
- 20" AMG Multi-Spoke Wheels
- 20" AMG Twin-5 Spoke Wheels
- Windshield Heater
- DINAMICA Roof Liner
- Wireless Phone Charging
- Carbon Fibre Exterior Mirrors
- Air Balance Package
  - Night Package
    - AMG front apron with front splitter in high-gloss black (1)
    - Mountings on the louvres of the outer air intakes in high-gloss black (2)
    - AMG rear apron with trim in high-gloss black (3)
    - Black chrome-plated twin tailpipe trim elements (4)



# E-Class Upholstery

ARTICO Leather Combinations - Standard on E 300 4MATIC



121 - Black



124 - Nut Brown



125 - Macchiato Beige

# E-Class Upholstery

## Leather Combinations

Standard on E 400 4MATIC, Optional on E 300 4MATIC



201 – Black



214 – Nut Brown



215 – Macchiato Beige

# E-Class Upholstery

## Nappa Leather Combinations

With Exclusive Package (MXP) on E 400 4MATIC



801 – Black



814 – Nut Brown



815 – Macchiato Beige

# E-Class Upholstery

## *designo* Nappa Leather Combinations

Optional on E 300 and E 400 4MATIC



961 – Black/Titanium Grey Pearl



965 - Macchiato Beige/Saddle Brown

# E-Class Upholstery

**Nappa Leather Combinations**  
Standard on the E 43 4MATIC



**821 - Black w/Red Stitching**



**861 - Black**

# E-Class Upholstery

## Nappa Leather Combinations

Standard on the E 43 4MATIC



864 - Nut Brown



865 - Macchiato Beige

# E-Class Trim



**736 – Open Pore Dark Ash Wood Trim**



**739 – Aluminum Trim**



**731 – Burl Walnut**



**H09 – Open Pore Brown Ash Wood Trim**



# E-Class Trim



# E-Class Wheels & Tires

MY17 E-Class Sedan Sport			
	E 300 4M	E 400 4M	E 43 4M
STANDARD			
	<b>Code R31</b> <b>18" 5-Spoke</b> Front: 245/45 (8J x 18) Rear: 245/45 (8J x 18) All-season runflat tires	<b>Code R31</b> <b>18" 5-Spoke</b> Front: 245/45 (8J x 18) Rear: 245/45 (8J x 18) All-season runflat tires	<b>Code RTE</b> <b>19" AMG 5-Twin-Spoke</b> <b>Bi-Colour</b> Front: 245/40 (8J x 19) Rear: 275/35 (9J x 19) All-season runflat tires
PACKAGE	N/A	N/A	 <b>Code RVR</b> <b>20" AMG Multi-Spoke</b> <b>Bi-Colour</b> Front: 245/35 (8J x 20) Rear: 275/30 (9J x 20) Summer performance runflat tires
			
OPTIONAL	<b>Code RQR</b> <b>18" AMG 5-Spoke</b> Front: 245/45 (8J x 18) Rear: 245/45 (8J x 18) All-season runflat tires	<b>Code RQR</b> <b>18" AMG 5-Spoke</b> Front: 245/45 (8J x 18) Rear: 245/45 (8J x 18) All-season runflat tires	<b>Code RTO</b> <b>20" AMG Twin-5 Spoke</b> <b>Bi-Colour</b> Front: 245/35 (8J x 20) Rear: 275/30 (9J x 20) Summer performance runflat tires
OPTIONAL			
	<b>Code RTK</b> <b>19" AMG 5-Twin-Spoke</b> Front: 245/40 (8J x 19) Rear: 245/40 (8J x 19) All-season runflat tires	<b>Code RTK</b> <b>19" AMG 5-Twin-Spoke</b> Front: 245/40 (8J x 19) Rear: 245/40 (8J x 19) All-season runflat tires	<b>Code RVQ</b> <b>20" AMG Multi-Spoke</b> Front: 245/35 (8J x 20) Rear: 275/30 (9J x 20) Summer performance runflat tires
OPTIONAL	N/A	N/A	 <b>Code RTN</b> <b>20" AMG Twin-5 Spoke</b> Front: 245/35 (8J x 20) Rear: 275/30 (9J x 20) Summer performance runflat tires

MY 17 E-Class Sedan Luxury		
	E 300 4M	E400 4M
STANDARD		
	<b>Code R54</b> <b>18" 5 V-Spoke Wheel</b> 8J x 18 245/45 (front) 245/45 (rear) All-season runflat tires	<b>Code R54</b> <b>18" 5 V-Spoke Wheel</b> 8J x 18 245/45 (front) 245/45 (rear) All-season runflat tires

# Technical Data

MY17 E-Class Sedan	E 300 4MATIC Sedan	E 400 4MATIC Sedan	E 43 4MATIC Sedan	E 400 4MATIC Wagon
<b>DIMENSIONS</b>				
Length (mm)	4,923	4,923	4,942	4,933
Width - Mirrors Retracted (mm)	1,872	1,872	1,872	1,872
Width - Mirrors Extended (mm)	2,065	2,065	2,065	2,065
Height (mm)	1,468	1,468	1,447	1,475
Track Width - Front (mm)	1,616	1,616	1,628	1,600
Track Width - Rear (mm)	1,619	1,619	1,598	1,609
Wheelbase (mm)	2,939	2,939	2,939	2,939
Turning Circle (m)	11.60	11.60	12.50	11.60
Luggage Capacity (L)	540	540	tbd	640-1,820
Fuel Capacity (L)	66	66	80	80
<b>WEIGHT</b>				
Curb Weight (kg)	1,765	1,820	1,880	1,935
Maximum Gross Vehicle Weight (kg)	2,385	2,460	2,450	2,665
Maximum Payload (kg)	620	640	570	730
Maximum Front Axle Load (kg)	1,135	1,210	1,220	1205
Maximum Rear Axle Load (kg)	1,250	1,280	1,250	1460
Maximum Roof Load (kg)	100	100	100	100
<b>ENGINE</b>				
Engine Type	I4 Turbo	V6 Biturbo	V6 Biturbo	V6 Biturbo
Displacement (cm <sup>3</sup> )	1991	2,996	2,996	2,996
Bore (mm)	83.00	88.00	88.00	88.00
Stroke (mm)	92.00	82.10	82.10	82.10
Horsepower (SAE @ RPM)	241 @ 5,500	329 @ 5,250 - 6,000	396 @ 6,100	329 @ 5,250 - 6,000
Torque (ft-lb @ RPM)	273 @ 1,300 - 4,000	354 @ 1,200 - 4,000	384 @ 2,500 - 5,000	354 @ 1,200 - 4,000
Compression Ratio	9.8:1	10.5:1	10.7:1	10.5:1
Fuel Type	Premium Unleaded	Premium Unleaded	Premium Unleaded	Premium Unleaded
<b>DRIVETRAIN</b>				
Drive Configuration	4MATIC	4MATIC	AMG Performance 4MATIC	4MATIC
Transmission Type	9G-TRONIC	9G-TRONIC	9G-TRONIC	9G-TRONIC
Gear Ratios (:1)				
1st	5.350	5.350	5.350	5.350
2nd	3.240	3.240	3.240	3.240
3rd	2.250	2.250	2.250	2.250
4th	1.640	1.640	1.640	1.640
5th	1.210	1.210	1.210	1.210
6th	1.000	1.000	1.000	1.000
7th	0.860	0.860	0.860	0.860
8th	0.720	0.720	0.720	0.720
9th	0.600	0.600	0.600	0.600
Reverse	4.800	4.800	4.800	4.800
Final Drive Ratio	TBD	2.820	3.070	2.820
<b>BODY/SUSPENSION</b>				
Steering	Rack & Pinion	Rack & Pinion	Rack & Pinion	Rack & Pinion
Braking System	ABS with Brake Assist	ABS with Brake Assist	ABS with Brake Assist	ABS with Brake Assist
Front Brake Type	Disc	Disc	Disc	Disc
Rear Brake Type	Disc	Disc	Disc	Disc
Brake Disc Ventilation	Front & Rear	Front & Rear	Front & Rear	Front & Rear
Front Suspension	Independent, Multi-Link	Independent, Multi-Link	Air Spring, Multi-Link	Independent, Multi-Link
Rear Suspension	Independent, Multi-Link	Independent, Multi-Link	Air Spring, Multi-Link	Air Spring, Multi-Link
Drag Coefficient	TBD	0.27	0.32	0.29
<b>ELECTRICAL</b>				
Battery Capacity (Amp Hours)	TBD	60	95	60
Alternator Output (Watts)	TBD	2,800	2,800	2,450
<b>PERFORMANCE</b>				
Top Speed (Electronically Limited - km/h)	210	210	210	210
Acceleration - 0-100 km/h (Seconds)	6.4	5.2	4.6	5.3