

# Interior Trims – Center Console Trim



728

Center Console in Black Piano Lacquer

*Included w/ upper trims 739, H64, H16*



730

Center Console in Natural Grain Brown Ash wood

*Requires Natural Grain Brown Ash wood trim (H09)*



737

Center Console in Natural Grain Black Ash Wood

*Requires Natural Grain Black Ash wood trim (736)*



732

Center Console in AMG Carbon Fiber  
*Requires AMG Carbon Fiber trim (H73)*



656

Center Console in Brown Ash wood

*Option price: \$0*


*Included w/ Brown Ash wood trim (H06)*

Details on Image might differ from actual center console

<i>Code</i>	<i>Packages</i>	<i>Availability</i>	<i>MSRP</i>
319	<b>Exterior Lighting Package</b> <ul style="list-style-type: none"> <li>▪ P35 – Advanced Light Package Code</li> <li>▪ 608 – Adaptive Highbeam Assist</li> <li>▪ 640 – LED Intelligent Light System</li> </ul>	All Models	\$ 800
996	<b>Parking Assistance Package</b> <ul style="list-style-type: none"> <li>▪ P47 – Parking Assist code</li> <li>▪ 235 – Active Parking Assist</li> <li>▪ 501 – Surround View System</li> </ul>	E 53 Standard on E 63 S	\$ 1,290
445	<b>Warmth and Comfort Package</b> <i>Not available w/ heated front seats (873)</i> <ul style="list-style-type: none"> <li>▪ P68 – Warmth and Comfort Package code                             <ul style="list-style-type: none"> <li>▪ 443 – Heated Steering Wheel</li> <li>▪ 902 – Rapid Heating Functionality for Front Seats</li> <li>▪ 906 – Heated Armrest</li> </ul> </li> </ul>	All Models	\$ 1,050
997	<b>Driver Assistance Package</b> <i>Not with Blind Spot Assist (234), Active Brake Assist (258), or AMG Performance Seats (555)</i> <ul style="list-style-type: none"> <li>▪ P20 – Driver Assistance Plus Package code                             <ul style="list-style-type: none"> <li>▪ K32 – Active Lane Change Assist</li> <li>▪ K34 – Route Based Speed Adaptation</li> <li>▪ 233 – Active Distance Assist DISTRONIC®</li> <li>▪ 253 – PRE-SAFE PLUS Rear End Collision Protection</li> <li>▪ 266 – Active Steering Assist</li> <li>▪ 269 – Active Brake Assist w/ Cross-Traffic Function</li> <li>▪ 292 – PRE-SAFE® Impulse Side</li> <li>▪ 546 – Active Speed Limit Assist</li> <li>▪ Active Emergency Stop Assist, Evasive Steering Assist, Active Blind Spot Assist and Active Lane Keeping Assist</li> <li>▪ Extended Restart by Stop &amp; Go up to three seconds</li> </ul> </li> </ul>	All Models	\$ 2,250

**When ordered with Parking Assistance Package (996), extended restart by Stop & Go up to 30 seconds**

<i>Code</i>	<i>Packages</i>	<i>Availability</i>	<i>MSRP</i>
990	<p><b>Driver Assistance Package for AMG Performance Seats</b>  <i>Not with Blind Spot Assist (234) or Active Brake Assist (258).                      Requires AMG Performance Seats (555).</i></p> <ul style="list-style-type: none"> <li>▪ 23P – Driver Assistance Package code                             <ul style="list-style-type: none"> <li>▪ K32 – Active Lane Change Assist</li> <li>▪ K34 – Route Based Speed Adaptation</li> <li>▪ 233 – Active Distance Assist DISTRONIC®</li> <li>▪ 253 – PRE-SAFE PLUS Rear End Collision Protection</li> <li>▪ 266 – Active Steering Assist</li> <li>▪ 269 – Active Brake Assist w/ Cross-Traffic Function</li> <li>▪ 546 – Active Speed Limit Assist</li> <li>▪ Active Emergency Stop Assist, Evasive Steering Assist, Active Blind Spot Assist and Active Lane Keeping Assist</li> <li>▪ Extended Restart by Stop &amp; Go</li> </ul> </li> </ul> <p><b>When ordered with Parking Assistance Package (996), extended restart by Stop &amp; Go up to 30 seconds</b></p>	All Models	\$ 2,250
325	<p><b>Rear Safety Package</b></p> <ul style="list-style-type: none"> <li>▪ P36 – Rear Safety Package code</li> <li>▪ 293 – Rear seat-belt air bags</li> <li>▪ 306 – Rear seatbelt airbags</li> </ul>	All Models	\$ 650
PAF	<p><b>Acoustic Comfort Package</b></p> <ul style="list-style-type: none"> <li>▪ PAF – Acoustic Comfort Package</li> </ul> <p><i>Increased Cabin Insulation, Windshield and Side Windows with Acoustic and Heat Absorbing Membrane</i></p> <ul style="list-style-type: none"> <li>▪ 596 – Infrared-reflecting glass</li> </ul>	All Models	\$ 1,100

<i>Code</i>	<i>Packages</i>	<i>Availability</i>	<i>MSRP</i>
521	 <b>AMG Night Package</b> <i>Can be combined with AMG Exterior Carbon Fiber Packages</i> <ul style="list-style-type: none"> <li>▪ P60 - AMG Exterior Night Styling (<i>E 53 Only</i>)</li> <li>▪ High-gloss black elements: front splitter, front flics, trim strip on rear apron Black Chrome elements: tailpipe in black chrome trim</li> <li>▪ P60 - AMG Exterior Night Styling (<i>E 63S Only</i>)</li> <li>▪ High-gloss black elements: front splitter, mirror housings, side fender inserts, window frame trim, trim strip on rear apron Black Chrome elements: tailpipe in black chrome trim</li> <li>▪ U50 - AMG Night Package</li> </ul>	E 53 E 63 S	\$ 650 \$ 750
313	<b>Sun Protection Package</b> <ul style="list-style-type: none"> <li>▪ P09 - Sun Protection Package Code</li> <li>▪ 313 - Rear window manual roller blinds</li> <li>▪ 540 - Power Rear-Window Sunshade</li> </ul>	All Models	\$ tbd
773	<b>AMG Exterior Carbon Fiber Package I</b> <i>Can be combined with AMG Night Package (521)</i> Carbon fiber elements: Front splitter, side fender inserts, side sill panel inserts, and insert in rear apron above rear diffuser	E 63 S	\$ 2,950
B28	<b>AMG Exterior Carbon Fiber Package II</b> <i>Can be combined with AMG Night Package (521)</i> <ul style="list-style-type: none"> <li>• AMG carbon fiber exterior mirror covers</li> <li>• AMG carbon fiber trunk lid spoiler</li> </ul>	All Models	\$ 1,750

<i>Code</i>	<i>Options</i>	<i>Availability</i>	<i>MSRP</i>
L6K	AMG Nappa/DINAMICA Performance Steering Wheel <i>Standard on the E 63 S</i>	E 53	\$ 500
L6J	AMG Nappa Leather Performance Steering Wheel <i>Standard on the E 53</i>	E 63 S	\$ 0
L6L	AMG Nappa/Black Piano Lacquer Performance Steering Wheel <i>Requires 739, H16 or H64 Trim</i>	All Models	\$ tbd
P21	AIR BALANCE Cabin Air Fragrance & Filtration System	All Models	\$ 350
U17	Omission of Red or Silver Seatbelts <i>Requires upholstery options: 621, 821, 561</i>	All Models	\$ 0
U80	115V AC Power Outlet	All Models	\$ 115
61U	<i>designo</i> Black DINAMICA Headliner <i>Requires Sun Protection Package (313)</i>	All Models	\$ 1,600
65U	DINAMICA Macchiato Beige Headliner <i>Requires Sun Protection Package (313)</i>	E 63 S	\$ 1,600
260	Deletion of Rear Deck Lid Badging	All Models	\$ 0
261	Deletion of Fender Badging	All Models	\$ 0
413	Panorama Roof	All Models	\$ 1,000
555	AMG Performance Seats <i>Not available with Active Multicontour Seats w/ Massage Function (432) &amp; Driver Assistance Package (997)</i>	All Models	\$ 2,500
581	3-zone Climate Control	All Models	\$ 760
811	Burmester® High-End 3D Surround Sound System	All Models	\$ 4,550

# Stand-Alone Options



DRIVING PERFORMANCE

<i>Code</i>	<i>Options</i>	<i>Availability</i>	<i>MSRP</i>
866	Rear Seat Entertainment and Comfort Adapter <i>Not available with AMG Performance Seats (555)</i>	All Models	\$ 170
872	Heated Rear Seats	All Models	\$ 580
883	Soft-close Doors	All Models	\$ 550
432	Active Multi-Contour Front Seats with Massage Function <i>Not available with AMG Performance seats (555) . Requires Nappa Leather upholstery. Requires Rapid Heating Functionality for Front Seats (902) or Warmth &amp; Comfort Package (445).</i>	All models	\$ 1,320
443	Heated Steering Wheel <i>Also included in Warmth &amp; Comfort Package (445)</i>	All Models	\$ 250
902	Rapid Heating Functionality for Front Seats <i>Requires Active Multi-Contour Front Seats with Massage Function (432)</i>	All Models	\$ 450
401	Heated and Ventilated Front Seats <i>Not available with 621 Upholstery</i>	E 53	\$ 450
256	AMG Track Pace App	E 53	\$ 250
U25	AMG Illuminated Door Sills	E 53	\$ 350
U78	AMG Performance Exhaust System	All Models	\$ 1,250
B07	AMG High-Performance Ceramic Composite Braking System	E 63 S	\$ 8,950
B14	AMG Carbon Fiber Engine Cover	E 63 S	\$ 1,500

<i>Code</i>	<i>VPC Installed Accessories</i>	<i>Availability</i>	<i>MSRP</i>
00A	Illuminated Star <i>Not with Driver Assistance Package (997) or Driver Assistance Package for AMG Performance Seats (990)</i>	All models	\$ tbd
068	Wheel locking bolts	All models	\$ tbd
070	Chrome door handle inserts	All models	\$ tbd
137	Comfort Box	All models	\$ tbd
26A	AMG LED Logo Projector	All models	\$ tbd

<i>Code</i>	<i>Special Order Options (SPC) - Implies \$250 Charge</i>	<i>MSRP</i>
293	Rear side air bags	\$ 420

## *Handcrafted AMG 4.0L V8 biturbo engine (M177 E40DEH LA AMG)*



Handcrafted AMG 4.0L V8 Biturbo engine (M177 E40DEH LA AMG)  
E 63 S

- **Aluminum crankcase** featuring a racing inspired closed-deck design
  - The area around the cylinders' coolant enclosure is closed off at the top and is only perforated by cooling channels
  - This makes the engine block more rigid and able to withstand greater loads
- **Forged, lightweight aluminum pistons** – high performance and low weight
- **Two Twin-scroll turbochargers** with separate exhaust channels
  - Positioned between the cylinder heads for faster response
  - Inspired by Formula 1
  - Keeps engine compact, improves turbo response and lowers emissions
  - Separate exhaust channels prevent turbos from having a negative impact on each other during load/directional changes, and enables faster spooling/buildup of turbo pressure
- **Dynamic Engine Mounts** – Adjust to DYNAMIC SELECT mode and driving conditions
  - “Soft Mounts” for Comfort – Reduces engine noise and vibration
  - “Hard Mounts” for Sport – Increases steering precision
- **Variably Adjustable Inlet and Outlet Valves**
  - Filled with sodium
  - Light weight



## *Brakes*

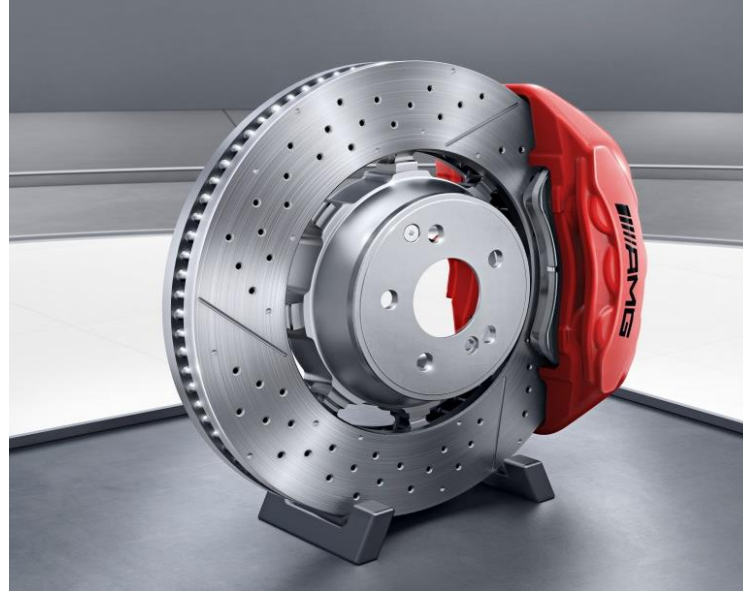


### **AMG Sport Brakes**

*Standard on E 53 (E 53 only)*

4-piston front and 1-piston rear calipers

- Front axle: brake disc measuring 14.2 inch, internally ventilated and perforated with 4-piston fixed caliper
- Rear axle: brake discs measuring 14.2 inch, internally ventilated 1-piston floating caliper
- Grey-painted brake calipers with “AMG” lettering

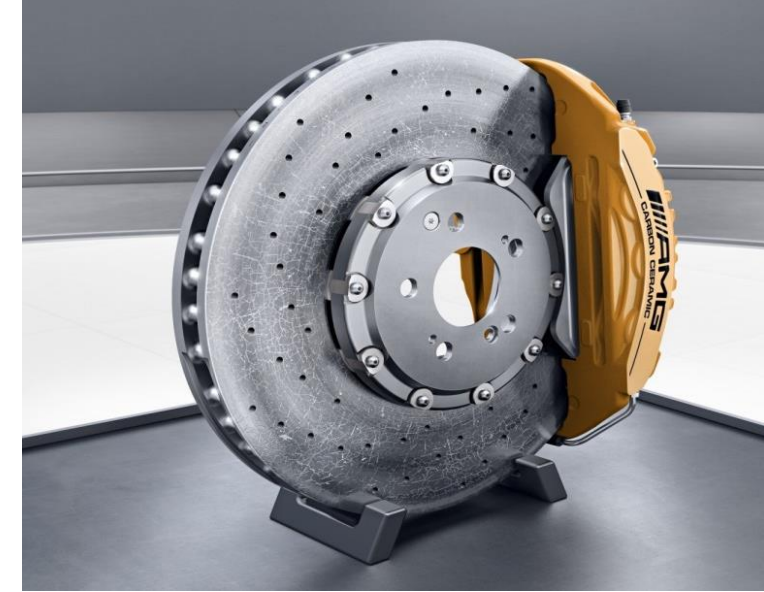


### **AMG High-Performance Composite Braking System (U70)**

*Standard on E 63 S (E 63 S only)*

6-piston front and 1-piston rear calipers

- Front axle: composite brake disc measuring 15.4 x 1.4 inch, internally ventilated and perforated with 6-piston fixed caliper
- Rear axle: brake discs measuring 14.2 x 1.0 inch, internally ventilated and perforated with 1-piston floating caliper
- Increased fade resistance and reduced thermal deformation of brake discs
- Red-painted brake calipers with “AMG” lettering



### **AMG High-Performance Ceramic Composite Braking System (B07)**

*Option price: \$8,950 (E 63 S only)*

6-piston front and 1-piston rear calipers

- Front axle: composite ceramic disc with a diameter of 15.8 x 1.5 inch, internally ventilated and perforated, with 6-piston fixed caliper
- Rear axle: integral brake disc with a diameter of 14.2 x 1.3 inch, internally ventilated, perforated and grooved with 1-piston floating brake caliper
- 40% weight savings compared to conventional brake discs
- Bronze-painted brake calipers with “AMG Carbon Ceramic” lettering

## Advisory on B07 AMG High-Performance Ceramic Compound Braking System



The AMG Ceramic Composite Braking system has numerous benefits – namely, it is 40% lighter than a conventional steel braking system, offers significantly longer service life for the brake rotors, and provides exceptional resistance to brake fade under repeated aggressive stops.\*

The materials in your AMG Ceramic Compound Braking system were derived from Formula One technology, and therefore will perform differently than conventional brakes.

Especially when cold, this ceramic composite material will resonate during braking and potentially feel less responsive under light brake pressure but with no loss in braking power. You will hear sounds, e.g. squealing, that you might not expect and which may be louder than what you are used to during ordinary everyday braking maneuvers – rest assured that this is a normal operating characteristic for this brake system, and is a by-product of the unique properties of the material. Mercedes-AMG recommends that the driver engage the brakes in an assertive manner in order to mitigate some of this noise during normal operation; Mercedes-AMG also recommends that the brakes be brought up to operating temperature before use in high-performance driving situations in order to improve braking performance.

*\*Brake weight based on AMG Germany official measurements, Service life based on F1 Safety car longevity and is dependent on individual driving style and conditions and will vary. Brake pads and rotors should be regularly serviced to ensure proper wear. Please reference your Mercedes-AMG Maintenance Booklet or contact your dealer for scheduled intervals.*

## Steering Wheels



### **AMG Performance steering wheel in Nappa leather (L6J)**

*Standard on E 53*

*No-cost option on the E 63 S*

- Features a flattened bottom section
- Perforated grip area
- Silver-colored aluminum shift paddles
- 12-o'clock marking



### **AMG Performance steering wheel in Nappa/Black Piano Lacquer (L6L)**

*Optional on all models.*

- Features a flattened bottom section
- Perforated grip area
- Silver-colored aluminum shift paddles
- 12-o'clock marking



### **AMG Performance steering wheel in Nappa /DINAMICA (L6K)**

*Standard on the E 63 S*

*Optional on the E 53*

- Features a flattened bottom section
- Grip is finished in DINAMICA microfiber
- Silver-colored aluminum shift paddles
- 12-o'clock marking

## *Headlamps*



### **LED Headlamps (632)**

#### *Standard*

- Excellent illumination of the road
- New LED taillamps
- Distinctive look during day and night
- Low energy consumption
- Color of emitted light more similar to that of daylight
- Much longer bulb life



### **LED Intelligent Light System (640)**

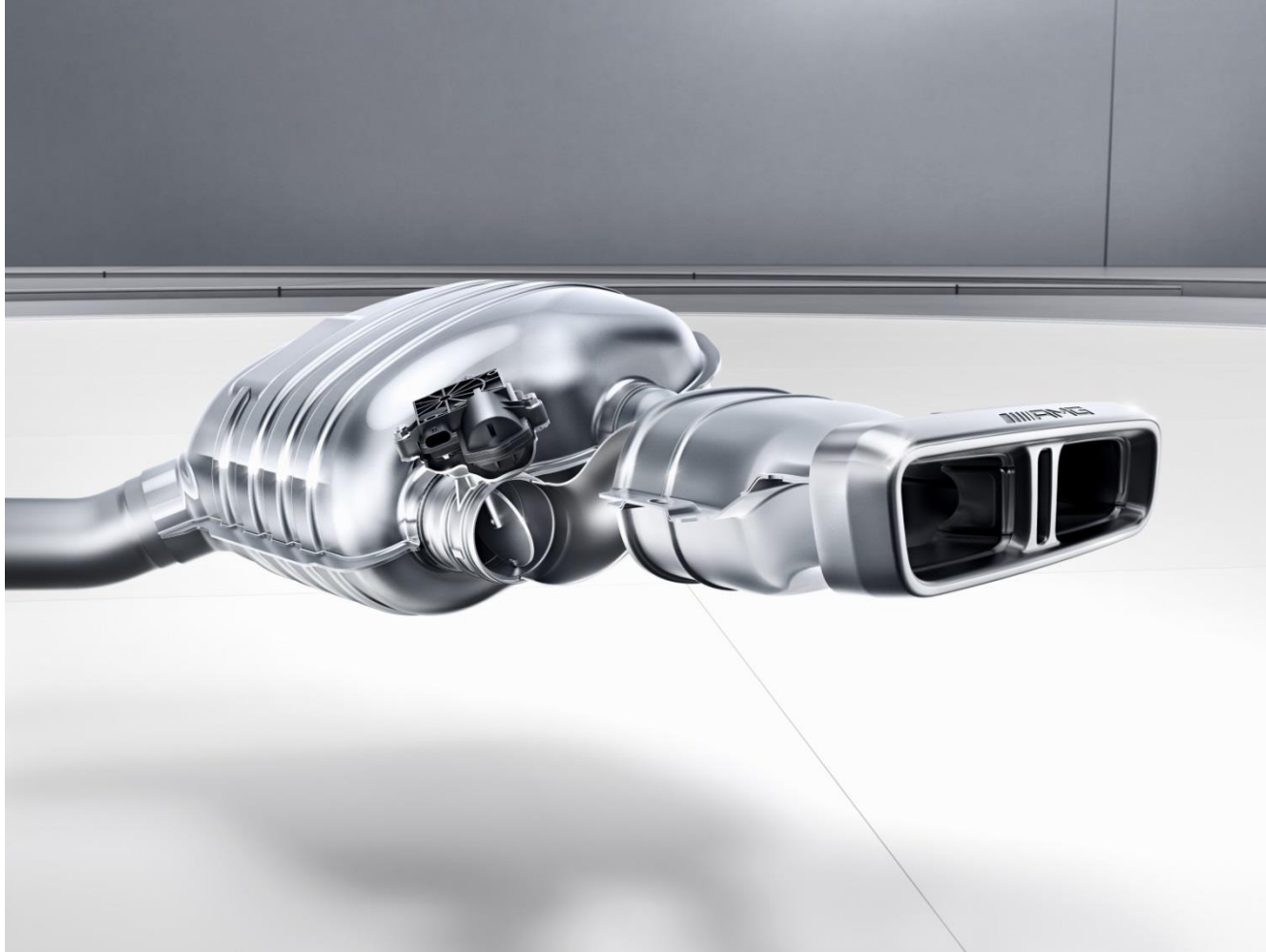
#### *Optional*

- Excellent illumination of the road
- Integrated LED daytime running lamps
- LED low-beam and LED high-beam technology
- New LED taillamps
- Adaptive Highbeam Assist automatic high-beam control
- Automatically activated low-speed cornering lights
- Headlamps move alongside steering input for significantly better illumination in bends
- Distinctive look during day and night

## AMG Performance seats (555)



## AMG Performance Exhaust System (U78)

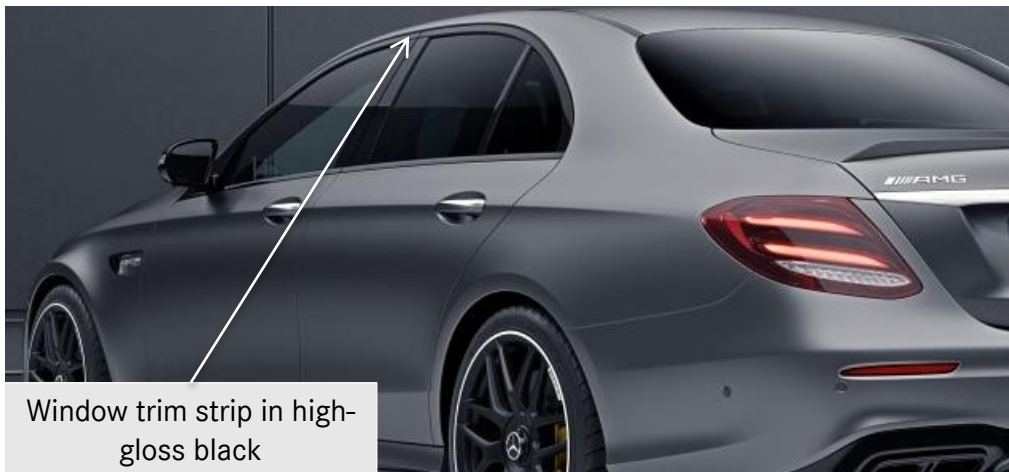


### **AMG Performance Exhaust System (U78)**

*Option price: \$1,250*

- Stronger differentiation of the sound characteristics by means of two additional exhaust flaps
- Sound characteristics dependent on selected drive program – clear differentiation between rich in drive programs “C” and “S” and emphatically sporty in drive programs “S+” and “Race” (*“Race” mode on E 63 S Only*)
- Additional control of the sound characteristics by means of a button in the middle control panel of the center console
- Control by means of variably adjustable exhaust flaps – without loss of power
- Control of the exhaust gas flaps is dependent on both engine speed and load, ensuring 100% power delivery
- Double declutching (in “S”) and a misfire (in “S+” and “Race” emphasize the sporty characteristics of the particular drive programs (*“Race” mode on E 63 S Only*))

## *AMG Night Package on the E 63 S (521)*



## *AMG Exterior Carbon Fiber Package I (773) on the E 63 S*



Carbon fiber inserts in AMG side sill panels



Carbon fiber insert in rear apron above rear diffuser



A-wing in carbon fiber

Lamella grille in silver chrome



## AMG Exterior Carbon Fiber Package II (B28) on all models (E 63 S shown)

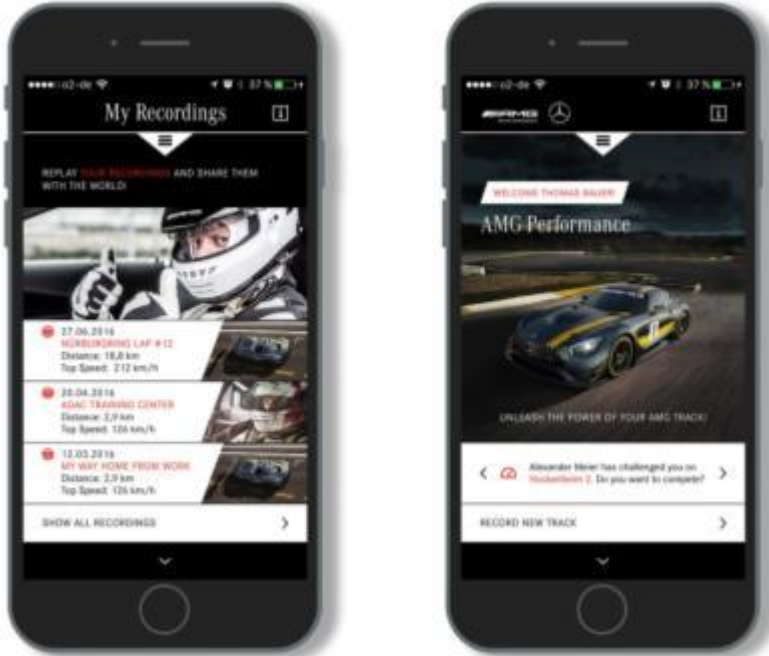


AMG carbon fiber rear spoiler



AMG carbon fiber exterior mirror covers

## AMG Track Pace App for Apple iPhone® (256)



### AMG Track Pace App for Apple iPhone® (256)

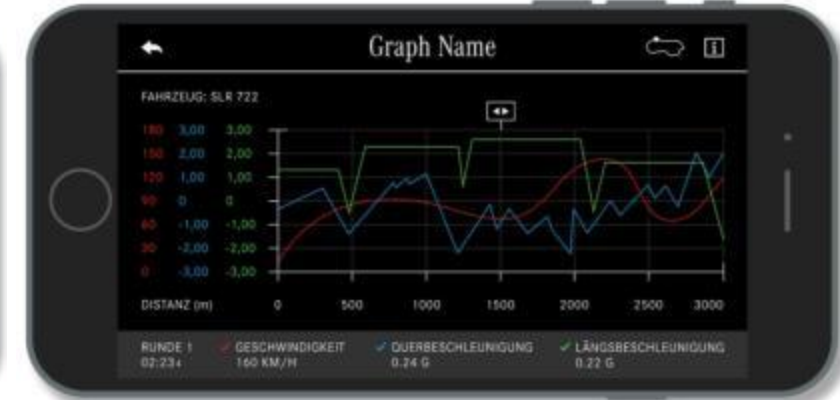
Option price for E 53: \$250

Standard for E 63 S

With the "AMG Track Pace" app, a smartphone can be turned into a personal racing engineer. This enables lap/sector times or even videos to be recorded and analyzed. Another attractive feature is the option to exchange data with other AMG drivers e.g. via social networks.

Overview of the AMG Track Pace app:

- Stores vehicle-specific data (e.g. speed, acceleration) as well as lap and sector times
- Video recordings via smartphone/GoPro are also possible
- Driving ability can be analyzed and improved in a targeted manner
- Connection via WLAN
- Exchange data with other AMG drivers via social networks such as Facebook (Share function) or the AMG Private Lounge



## *Build Recommendations for the E53 Sedan*

Model	E 53	E 53	E 53
<b>Exterior Color</b>	197 Obsidian Black Metallic	992 Selenite Grey Metallic	890 Lunar Blue Metallic
<b>Upholstery</b>	621 Black MB-Tex/DINAMICA w/ Red Stitching	861 Black Nappa Leather	864 Nut Brown / Black Nappa Leather
<b>Option Package</b>	996 Parking Assistance Package	996 Parking Assistance Package 319 Exterior Lighting Package	996 Parking Assistance Package 319 Exterior Lighting Package 997 Driver Assistance Package 445 Warmth and Comfort Package 313 Sun Protection Package 521 Night Package
<b>Wheel</b>	RTE 19" Twin 5-Spoke Wheels w/ Black Accents	RVR 20" AMG Multi-Spoke Wheels w/ Black Accents	RTO: 20" AMG Twin 5-Spoke Wheels w/ Black Accents
<b>Trim</b>	736+737 Natural Grain Black Ash Wood Trim	736+737 Natural Grain Black Ash Wood Trim	H73+732 AMG Carbon Fiber Trim
<b>Standalone Options</b>	U17 Black Seatbelts L6J AMG Performance steering wheel in Nappa leather	413 Panorama Roof 401 Heated and Ventilated Front Seats 443 Heated Steering Wheel L6J AMG Performance steering wheel in Nappa leather U78 AMG Performance Exhaust U25 AMG Illuminated Door Sills 256 AMG Track Pace App	413 Panorama Roof P21 AIR BALANCE Cabin Air Fragrance & Filtration System 401 Heated and Ventilated Front Seats L6J AMG Performance steering wheel in Nappa leather 432 Active Multi-Contour Front Seats with Massage Function U78 AMG Performance Exhaust 866 Rear Seat Entertainment and Comfort Adapter 61U <i>designo</i> Black DINAMICA Headliner 256 AMG Track Pace App
<b>MSRP</b>	<b>\$tbd</b>	<b>\$tbd</b>	<b>\$tbd</b>

## *Build Recommendations for the E 63 S*

Model	E 63 S	E 63 S
<b>Exterior Color</b>	197 Obsidian Black Metallic	992 Selenite Grey Metallic
<b>Upholstery</b>	561 Black Exclusive Nappa Leather w/ Silver Stitching	554 Nut Brown Exclusive Nappa Leather
<b>Option Package</b>	997 Driver Assistance Package 319 Exterior Lighting Package 445 Warmth & Comfort Package	997 Driver Assistance Package 319 Exterior Lighting Package 521 AMG Night Package B28 AMG Exterior Carbon Fiber Package II 313 Sun Protection Package
<b>Wheel</b>	RTR 20" AMG Forged Cross-Spoke Wheels	RTS 20" AMG Black Forged Cross-Spoke Wheels
<b>Trim</b>	H64+728 Metal Weave Trim w/ Piano Black Lacquer center console	H73+732 AMG Carbon Fiber Trim
<b>Standalone Options</b>	413 Panorama Roof 872 Heated Rear Seats 432 Active Multicontour Seats w/ Massage Function 866 Rear Seat Entertainment and Comfort Adapter U78 AMG Performance Exhaust System L6J AMG Performance steering wheel in Nappa leather U17 Black Seatbelts	413 Panorama Roof 555 AMG Performance Seats L6K AMG Nappa/DINAMICA Performance Steering Wheel 811 Burmester® High End 3D Surround Sound System 61U <i>designo</i> Black DINAMICA Headliner 872 Heated Rear Seats 883 Soft-Close Doors P21 AIR BALANCE Cabin Air Fragrance & Filtration System 443 Heated Steering Wheel U78 AMG Performance Exhaust System
<b>MSRP</b>	<b>\$tbd</b>	<b>\$tbd</b>

	<i>E 53</i>	<i>E 63 S</i>
Engine Configuration	AMG-enhanced 3.0L I6 Turbo Engine	Handcrafted AMG 4.0L V8 biturbo engine
ICE Power (hp)	429	603
EQ Boost Starter-Alternator (hp)	21	n/a
ICE Torque (lb-ft)	384	627
Displacement (cc)	2,999	3,982
Acceleration 0-60 mph (sec)	4.4	3.3
Fuel Economy (Cty/Hwy/Comb)	tbd	tbd
Top Speed (mph)	130 (electronically limited)	186 (electronically limited)
Fuel Requirement (Octane)	91	91
Compression	10.5:1	8.6:1
Transmission	AMG SPEEDSHIFT TCT 9G	AMG SPEEDSHIFT® MCT
Transmission Speeds	9	9
Drive Configuration	AMG Performance 4MATIC+	AMG Performance 4MATIC+ w/Drift Mode
Fuel Tank Size (gallons)	21.1	21.1
Trunk Size (cubic feet)	13.1	13.1
Curb Weight (lbs)	tbd	Tbd
Vehicle Length (in.)	195.2	196.4
Vehicle Width w/ exterior mirrors (in.)	81.3	81.3
Vehicle Height (in.)	57.0	56.6
Wheelbase (in.)	115.7	115.7
Track Width Front/Rear (in.)	64.1 / 62.9	64.9/62.8
Coefficient of Drag (Cd)	tbd	0.32

# Specifications – E 63 S Sedan

