

## - Parts list -

<b>Mode</b>	BM mode	<b>BM overview</b>	E 220 D
<b>VIN/mod. des.</b>	WDD2130042A209098	<b>Catalog</b>	J01
<b>VIN</b>		<b>Group</b>	47 FUEL SYSTEM
<b>Assortment class</b>	PC	<b>Sub-group</b>	800 ADBLUE CONTAINER AND LINES
<b>Market</b>			

Copyright 2019-05-10 Daimler AG

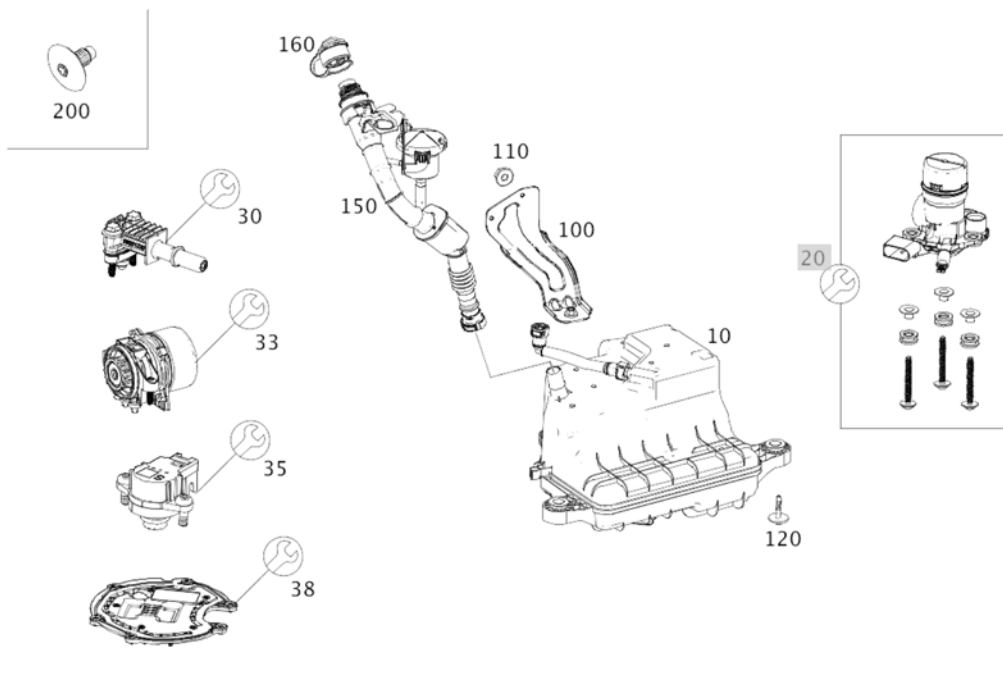









Image ID: drawing\_B47800000054

Item	Part number	Designation/additional information	Qty
10	A 213 470 60 01	<b>ADDITIVE TANK</b> Code: (U79+U85)+(807/808);	1
10	A 213 470 93 01	<b>ADDITIVE TANK</b> Code: (U79+U85)+(807/808);	1
30	A 099 140 00 00	<b>* RS CONNECTION FITTING</b> WITH FASTENING BOLTS Code: U79;	1
33	A 099 470 08 00	<b>* RS METERING PUMP</b> WITH FASTENING BOLTS Code: U79; [697] PART IS ONLY OR ALSO SUPPLIED AS RECONDITION...	1
35	A 099 905 79 00	<b>* PRESSURE SENSOR</b> WITH FASTENING BOLTS Code: U79;	1
38	A 099 340 00 00	<b>* RS SERVICE COVER</b> WITH FASTENING BOLTS Code: U79;	1

Item	Part number	Designation/additional information	Qty
100	A 213 475 00 27	<b>BRACKET</b> TANK TO WHEEL WELL, OUTSIDE  Code: U77/U79/6U7;	1
110	N 910112 006001	<b>HEXAGON NUT</b> HOOK TO SIDE PANEL; M6  Code: U77/U79/6U7;	2
120	A 003 990 96 03	<b>COMBI-SCREW W FEATURE</b> TANK TO VEHICLE; M8X43  Code: (U77/U79/6U7)+U85;	3
150	A 213 470 52 01	<b>FILLER PIPE</b>  Code: U77/U79/6U7;	1
160	A 000 470 03 00	<b>FUEL FILLER CAP</b>  Code: U77/U79/6U7;	1
200	A 003 998 63 50	<b>STOP PLUG</b> ON SIDE MEMBER M8  Code: (U77/U79/6U7)+U85;	2
200	A 003 998 63 50	<b>STOP PLUG</b> SIDE MEMBER LATERAL REAR RIGHT  Code: U77/U79/6U7;	1