

2025 EQE SUV Order Guide



Table of Contents

1	General Information
2	What's New
3	Models
4	Equipment
4.1	Standard Equipment
4.2	Exterior Paint Colors
4.3	Wheels
4.4	Interior Upholstery
4.6	Interior Trims
4.7	Packages
4.8	Options
4.9	Specifications
5	Options In Detail
6	Gallery



General Information

Important Note

The information presented in this guide is based on the most current information available and is intended for internal use only. Mercedes-Benz reserves the right to make changes at any time, without notice, to colors, materials, equipment, special specifications and models.

Pricing may not yet be finalized for some models or options.

Due to variances among monitors and printers the colors that appear on your screen and printouts may not be exact.

For illustrative purposes, some images may show vehicles with European Specification.

Revision History

Date	Description
04/25/2024	<ul style="list-style-type: none">• AMG EQE SUV DOG Published• EQE SUV DOG Published



What's New

EQE350X



Standard Equipment

- Center Airbag

Options

- Soft Close Doors
- Chrome Roof Spoiler Trim

EQE350X4



Standard Equipment

- Center Airbag

Options

- Soft Close Doors
- Chrome Roof Spoiler Trim

EQE500X4



Standard Equipment

- Center Airbag

Options

- Soft Close Doors
- Chrome Roof Spoiler Trim

MY25 Product Changes

- **New Standard Equipment**
 - Center Airbag
 - Rear Headrest Pillows
- **New Options, Product Improvements and Package Changes**
 - Soft Close Doors (883) now orderable
 - Introduction of MANUFAKTUR Moonlight White Metallic (885)
 - Leather and Nappa Leather Upholsteries now feature rear pillows
 - Multicontour Front Seats now feature headrest pillows



Models



EQE350X (294.621)

- MSRP: TBD
- Powertrain: Rear Permanently Synchronous Electric Motor with 215 kW Output
- Power: 288 Horsepower
- Torque: 417 lb-ft of Torque
- Launch Date: TBA



EQE350X4 (294.612)

- MSRP: TBD
- Powertrain: Dual Permanently Synchronous Electric Motors with 215 kW Total Output
- Power: 288 Horsepower
- Torque: 564 lb-ft of Torque
- Launch Date: tba



EQE500X4 (294.622)

- MSRP: TBD
- Powertrain: Dual Permanently Synchronous Electric Motors with 300 kW Output
- Power: 402 Horsepower
- Torque: 633 lb-ft of Torque
- Launch Date: tba



Standard Equipment

EQE350X



Performance & Handling

- Adjustable Regenerative Braking with Steering Wheel Paddles
- 96 kWh High Voltage Battery
- DYNAMIC SELECT (B59)
- 170 kW DC Fast Charging
- Rear 215 kW Permanently Synchronous Electric Motor
- Comfort Suspension with Selective Damping (485)
- 9.6 kW AC Charging
- 20" Wheels

Comfort & Convenience

- MBUX Multimedia System with 12.8" OLED Portrait Display & 12.3" Driver Display (PAI)
- MBUX EQ Navigation Services incl. Navi w/ Electric Intelligence, Active Range Monitoring & Charging Station Availability (13U)
- MB-Tex Upholstery
- 64-Color Ambient Lighting (894)
- Power Front Seats with Contour Ambient Lighting & Memory (275, 241, 242)
- Fingerprint Scanner for MBUX Profile Authentication
- Heated Front Seats (873)
- Front Wireless Smartphone Charger (897)
- Complementary Maintenance for 2 years / 20,000 Miles
- Storage Compartment Under Center Console (5B1)
- MBUX Navigation (PBG)
- Burmester Sound System with EQ Sound Experience, Sound Personalization & Dolby Atmos (810)
- Power Tilt/Sliding Panorama Roof (413)
- KEYLESS-GO Comfort Package w/ Seamless Door Handles & Hands-Free Access (P17)
- Garage Door Opener (232)
- 2-Zone Automatic Climate Control w/ Pre-Entry Climate Control (580)
- SiriusXM Satellite Radio w/ Trial Period (536)
- Wireless Smartphone Integration (14U)
- Power Closing Trunklid (881)
- Illuminated Door Sill Panels (U25)

Safety & Security

- Exterior Acoustic Pedestrian Protection
- Blind Spot Assist (234)
- Parking Package with Surround View System and PARKTRONIC (P47, 501, 235)
- GUARD 360 Vehicle Protection Plus (P82)
- Active Brake Assist (258)
- TIREFIT Tire Sealing Compound and Air Compressor (B51) (Note - Deleted with R66)
- Center Airbag
- Static LED Headlamps w/ Adaptive Highbeam Assist (632, 608)
- Active Lane Keeping Assist (243)
- Power Folding Exterior Mirrors with Logo Projection & Automatic Dimming of Driver's Side and Interior Mirror (P49, 500, 249, 587)
- Rear LED Taillamps with Lightband and Helix Signature
- PRE-SAFE System (299)
- Tire Pressure Monitoring System



Performance & Handling

- Adjustable Regenerative Braking with Steering Wheel Paddles
- 90.56 kWh High Voltage Battery
- DYNAMIC SELECT (B59)
- 170 kW DC Fast Charging
- Dual Permanently Synchronous Electric Motors with 215 kW Total Output
- Comfort Suspension with Selective Damping (485)
- 9.6 kW AC Charging
- 20" Wheels

Comfort & Convenience

- MBUX Multimedia System with 12.8" OLED Portrait Display & 12.3" Driver Display (PAI)
- MBUX EQ Navigation Services incl. Navi w/ Electric Intelligence, Active Range Monitoring & Charging Station Availability (13U)
- MB-TEX Upholstery
- 64-Color Ambient Lighting (894)
- Power Front Seats with Contour Ambient Lighting & Memory (275, 241, 242)
- Fingerprint Scanner for MBUX Profile Authentication
- Heated Front Seats (873)
- Front Wireless Smartphone Charger (897)
- Complementary Maintenance for 2 years / 20,000 Miles
- Storage Compartment Under Center Console (5B1)
- MBUX Navigation (PBG)
- Burmester Sound System with EQ Sound Experience, Sound Personalization & Dolby Atmos (810)
- Power Tilt/Sliding Panorama Roof (413)
- KEYLESS-GO Comfort Package w/ Seamless Door Handles & Hands-Free Access (P17)
- Garage Door Opener (232)
- 2-Zone Automatic Climate Control w/ Pre-Entry Climate Control (580)
- SiriusXM Satellite Radio w/ Trial Period (536)
- Wireless Smartphone Integration (14U)
- Power Closing Trunklid (881)
- Illuminated Door Sill Panels (U25)

Safety & Security

- Exterior Acoustic Pedestrian Protection
- Blind Spot Assist (234)
- Parking Package with Surround View System and PARKTRONIC (P47, 501, 235)
- GUARD 360 Vehicle Protection Plus (P82)
- Active Brake Assist (258)
- TIREFIT Tire Sealing Compound and Air Compressor (B51) (Note - Deleted with R66)
- Center Airbag
- Static LED Headlamps w/ Adaptive Highbeam Assist (632, 608)
- Active Lane Keeping Assist (243)
- Power Folding Exterior Mirrors with Logo Projection & Automatic Dimming of Driver's Side and Interior Mirror (P49, 500, 249, 587)
- Rear LED Taillamps with Lightband and Helix Signature
- PRE-SAFE System (299)
- Tire Pressure Monitoring System



Performance & Handling

- Adjustable Regenerative Braking with Steering Wheel Paddles
- 96 kWh High Voltage Battery
- DYNAMIC SELECT (B59)
- 170 kW DC Fast Charging
- AMG Line Exterior Package
- Dual Permanently Synchronous Electric Motors with 300 kW Output
- Comfort Suspension with Selective Damping (485)
- 9.6 kW AC Charging
- 20" Wheels
- 10-Degree Rear Axle Steering

Comfort & Convenience

- MBUX Hyperscreen with 12.3" Driver Display, 17.7" Central Display & 12.3" Passenger Display
- MBUX EQ Navigation Services incl. Navi w/ Electric Intelligence, Active Range Monitoring & Charging Station Availability (13U)
- Leather Upholstery
- 64-Color Ambient Lighting (894)
- Power Front Seats with Contour Ambient Lighting & Memory (275, 241, 242)
- Fingerprint Scanner for MBUX Profile Authentication
- Heated Front Seats (873)
- Front Wireless Smartphone Charger (897)
- Complementary Maintenance for 2 years / 20,000 Miles
- Storage Compartment Under Center Console (5B1)
- MBUX Navigation (PBG)
- Burmester Sound System with EQ Sound Experience, Sound Personalization & Dolby Atmos (810)
- Power Tilt/Sliding Panorama Roof (413)
- KEYLESS-GO Comfort Package w/ Seamless Door Handles & Hands-Free Access (P17)
- Garage Door Opener (232)
- 2-Zone Automatic Climate Control w/ Pre-Entry Climate Control (580)
- SiriusXM Satellite Radio w/ Trial Period (536)
- Wireless Smartphone Integration (14U)
- Power Closing Trunklid (881)
- Illuminated Door Sill Panels (U25)

Safety & Security

- Exterior Acoustic Pedestrian Protection
- Blind Spot Assist (234)
- Parking Package with Surround View System and PARKTRONIC (P47, 501, 235)
- GUARD 360 Vehicle Protection Plus (P82)
- Active Brake Assist (258)
- TIREFIT Tire Sealing Compound and Air Compressor (B51) (Note - Deleted with R66)
- Center Airbag
- Static LED Headlamps w/ Adaptive Highbeam Assist (632, 608)
- Active Lane Keeping Assist (243)
- Power Folding Exterior Mirrors with Logo Projection & Automatic Dimming of Driver's Side and Interior Mirror (P49, 500, 249, 587)
- Rear LED Taillamps with Lightband and Helix Signature
- PRE-SAFE System (299)
- Tire Pressure Monitoring System



Paint

Non-Metallic Paints



040 - Black



149 - Polar White

Metallic Paints



197 - Obsidian Black Metallic



842 - Twilight Blue Metallic



922 - Cirrus Silver Metallic



989 - Emerald Green Metallic



992 - Selenite Grey Metallic



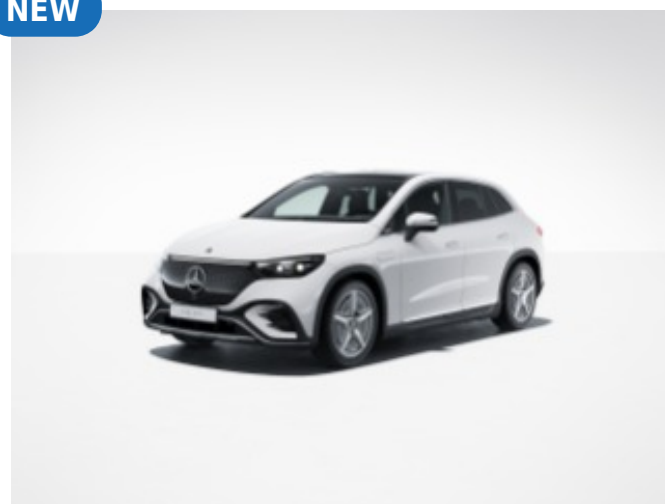
771 - Sonoran Brown Metallic

MANUFAKTUR Paints



956 - MANUFAKTUR Alpine Grey

NEW



883 - MANUFAKTUR Moonlight White Metallic

Code	Description	Availability	Price
040	Black		\$0
149	Polar White		\$0
197	Obsidian Black Metallic		\$0
842	Twilight Blue Metallic		\$0
922	Cirrus Silver Metallic		\$0
989	Emerald Green Metallic		\$0
992	Selenite Grey Metallic		\$0
771	Sonoran Brown Metallic		\$0
956	MANUFAKTUR Alpine Grey		\$1,750
883 (New)	MANUFAKTUR Moonlight White Metallic		\$1,750



Wheels



**29R - 20" Five-Spoke Wheels w/
Wave Pattern Print**

Not with AMG Line Exterior Package (DG1) or Extended Mobility Tires (R66). Available with Range-Optimized Summer Tires (R01) or All-Season Tires (R02)

20"

MO

255/45 R20 on 8.5J x 20 ET38.5



**R61 - 20" Five-Spoke Wheels w/
Black Accents**

Not with AMG Line Exterior Package (DG1) or Extended Mobility Tires (R66) Available with Range-Optimized Summer Tires (R01) or All-Season Tires (R02)

20"

MO

255/45 R20 on 8.5J x 20 ET38.5



**96R - 20" Five-Spoke Aero Wheel w/
Mercedes-Benz Star Pattern**

Not with AMG Line Exterior Package (DG1) or Extended Mobility Tires (R66). Available with Range-Optimized Summer Tires (R01) or All-Season Tires (R02)

20"

MO

255/45 R20 on 8.5J x 20 ET38.5



**70R - 21" Five Quad-Spoke Wheels
w/ Black Accents**

Not with AMG Line Exterior Package (DG1). Available with Range-Optimized Summer Tires (R01) or All-Season Tires (R02)

21"

MO or MOE (R66)

265/40 R21 on 9.5J x 21 ET41.5



**RRT - 20" AMG Five-Spoke Wheels
w/ Matte Grey Cladding**

Requires AMG Line Exterior Package (DG1). Not with Extended Mobility Tires (R66). Available with Range-Optimized Summer Tires (R01) or All-Season Tires (R02)

20"

MO

255/45 R20 tires on 8.5J x 20 ET38.5



**RWX - 21" AMG Multispoke Wheels
w/ Black Accents**

Requires AMG Line Exterior Package (DG1). Available with Range-Optimized Summer Tires (R01) or All-Season Tires (R02)

21"

MO or MOE (R66)

265/40 R21 on 9.5J x 21 ET41.5

<i>Code</i>	<i>Wheel Size</i>	<i>Description</i>	<i>Wheel Dimensions</i>	<i>Mobility</i>	<i>Availability</i>	<i>MSRP</i>
29R	20"	Not with AMG Line Exterior Package (DG1) or Extended Mobility Tires (R66). Available with Range-Optimized Summer Tires (R01) or All-Season Tires (R02)	255/45 R20 on 8.5J x 20 ET38.5	MO	EQE350X, EQE350X4	\$0
R61	20"	Not with AMG Line Exterior Package (DG1) or Extended Mobility Tires (R66) Available with Range-Optimized Summer Tires (R01) or All-Season Tires (R02)	255/45 R20 on 8.5J x 20 ET38.5	MO	EQE350X, EQE350X4	\$0
96R	20"	Not with AMG Line Exterior Package (DG1) or Extended Mobility Tires (R66). Available with Range-Optimized Summer Tires (R01) or All-Season Tires (R02)	255/45 R20 on 8.5J x 20 ET38.5	MO	EQE350X, EQE350X4	\$0
70R	21"	Not with AMG Line Exterior Package (DG1). Available with Range-Optimized Summer Tires (R01) or All-Season Tires (R02)	265/40 R21 on 9.5J x 21 ET41.5	MO or MOE (R66)	EQE350X, EQE350X4	\$1,100
RRT	20"	Requires AMG Line Exterior Package (DG1). Not with Extended Mobility Tires (R66). Available with Range-Optimized Summer Tires (R01) or All-Season Tires (R02)	255/45 R20 tires on 8.5J x 20 ET38.5	MO	All Models	\$0
RWX	21"	Requires AMG Line Exterior Package (DG1). Available with Range-Optimized Summer Tires (R01) or All-Season Tires (R02)	265/40 R21 on 9.5J x 21 ET41.5	MO or MOE (R66)	All Models	\$1,100



Upholstery

MB Tex



111 - Black / Space Grey MB-Tex



121 - Black / Sable Brown MB-Tex



131 - Black / Biscaya Blue MB-Tex



109 - Neva Grey / Sable Brown MB-Tex



119 - Neva Grey / Biscaya Blue MB-Tex

Leather



201 - Black / Space Grey Leather



211 - Black / Sable Brown Leather



221 - Black / Biscaya Blue Leather



209 - Neva Grey / Sable Brown Leather



219 - Neva Grey / Biscaya Blue Leather

Nappa Leather



801 - Black / Space Grey Nappa Leather

Requires Multicontour Front Seats (DB6)



804 - Sable Brown / Black Nappa Leather

Requires Multicontour Front Seats (DB6)



821 - Black / Biscaya Blue Nappa Leather

Requires Multicontour Front Seats Package (DB6)

Fabric Headliners



51U - Black Headliner

Only with Black Upholsteries (111, 121, 131, 201, 211, 221, 801, 804, 821)



59U - Neva Grey Headliner

Only with Neva Grey Upholsteries (109, 119, 209, 219)



61U - Black Microfiber Headliner

Only with Black Leather or Nappa Upholsteries (201, 211, 221, 801, 804, 821)

<i>Code</i>	<i>Description</i>	<i>Availability</i>	<i>Price</i>
111	Black / Space Grey MB-Tex	EQE350X, EQE350X4	\$0
121	Black / Sable Brown MB-Tex	EQE350X, EQE350X4	\$0
131	Black / Biscaya Blue MB-Tex	EQE350X, EQE350X4	\$0
109	Neva Grey / Sable Brown MB-Tex	EQE350X, EQE350X4	\$0
119	Neva Grey / Biscaya Blue MB-Tex	EQE350X, EQE350X4	\$0
201	Black / Space Grey Leather	All Models	\$1,620 (EQE350X, EQE350X4) \$0 (EQE500X4)
211	Black / Sable Brown Leather	All Models	\$1,620 (EQE350X, EQE350X4) \$0 (EQE500X4)
221	Black / Biscaya Blue Leather	All Models	\$1,620 (EQE350X, EQE350X4) \$0 (EQE500X4)
209	Neva Grey / Sable Brown Leather	All Models	\$1,620 (EQE350X, EQE350X4) \$0 (EQE500X4)
219	Neva Grey / Biscaya Blue Leather	All Models	\$1,620 (EQE350X, EQE350X4) \$0 (EQE500X4)
801	Black / Space Grey Nappa Leather	All Models	\$2,990 (EQE350X, EQE350X4) \$1,370 (EQE500X4)
804	Sable Brown / Black Nappa Leather	All Models	\$2,990 (EQE350X, EQE350X4) \$1,370 (EQE500X4)
821	Black / Biscaya Blue Nappa Leather	All Models	\$2,990 (EQE350X, EQE350X4) \$1,370 (EQE500X4)
51U	Black Headliner Only with Black Upholsteries (111, 121, 131,201, 211, 221, 801, 804, 821)	EQE350X	\$0
59U	Neva Grey Headliner Only with Neva Grey Upholsteries (109, 119, 209, 219)	EQE350X	\$0
61U	Black Microfiber Headliner Only with Black Leather or Nappa Upholsteries (201, 211, 221, 801, 804, 821)	EQE350X	\$1,600

<i>Code</i>	<i>Upholstery</i>	<i>Seats</i>	<i>Floor Mats</i>	<i>Upper Dash/Lower Dash</i>	<i>Seat Belts</i>	<i>Steering Wheel</i>	<i>Headliner</i>
111	Black / Space Grey MB-Tex	Black	Black	Space Grey w/ Rose Gold Stitching, Black	Black	Black	Black (51U)
121	Black / Sable Brown MB-Tex	Black	Black	Sable Brown w/ Rose Gold Stitching, Black	Black	Black	Black (51U)
131	Black / Biscaya Blue MB-Tex	Black	Black	Biscaya Blue w/ Rose Gold Stitching, Black	Black	Black	Black (51U)
109	Neva Grey / Sable Brown MB-Tex	Neva Grey	Sable Brown	Sable Brown w/ Rose Gold Stitching, Neva Grey	Neva Grey	Neva Grey	Neva Grey (59U)
119	Neva Grey / Biscaya Blue MB-Tex	Neva Grey	Biscaya Blue	Biscaya Blue w/ Rose Gold Stitching, Neva Grey	Neva Grey	Neva Grey	Neva Grey (59U)
201	Black / Space Grey Leather	Black	Black	Space Grey / Black	Black	Black	Black (51U) or Black Microfiber (61U)
211	Black / Sable Brown Leather	Black	Black	Sable Brown / Black	Black	Black	Black (51U) or Black Microfiber (61U)
221	Black / Biscaya Blue Leather	Black	Black	Biscaya Blue w/ Rose Gold Stitching, Black	Black	Black	Black (51U) or Black Microfiber (61U)
209	Neva Grey / Sable Brown Leather	Neva Grey	Sable Brown	Sable Brown / Neva Grey	Neva Grey	Neva Grey	Neva Grey (59U)
219	Neva Grey / Biscaya Blue Leather	Neva Grey	Biscaya Blue	Biscaya Blue / Neva Grey	Neva Grey	Neva Grey	Neva Grey (59U)
801	Black / Space Grey Nappa Leather	Black	Black	Space Grey / Black	Black	Black	Black (51U) or Black Microfiber (61U)
804	Sable Brown / Black Nappa Leather	Sable Brown	Black	Sable Brown / Black	Black	Black	Black (51U) or Black Microfiber (61U)
821	Black / Biscaya Blue Nappa Leather	Black	Black	Biscaya Blue w/ Rose Gold Stitching, Black	Black	Black	Black (51U) or Black Microfiber (61U)
51U	Black Headliner Only with Black Upholsteries (111, 121, 131,201, 211, 221, 801, 804, 821)						
59U	Neva Grey Headliner Only with Neva Grey Upholsteries (109, 119, 209, 219)						
61U	Black Microfiber Headliner Only with Black Leather or Nappa Upholsteries (201, 211, 221, 801, 804, 821)						



Trims



51H+331 - Laser-Cut Backlit Trim with Mercedes-Benz Star Pattern



H08 - Natural Grain Anthracite Linden Wood



H20 - Natural Grain Brown Magnolia Wood w/ Mercedes-Benz Star Pattern



07H - Natural Grain "Yacht-Design" Norway Maple Wood



H67 - Anthracite 3D Relief-Optic Trim



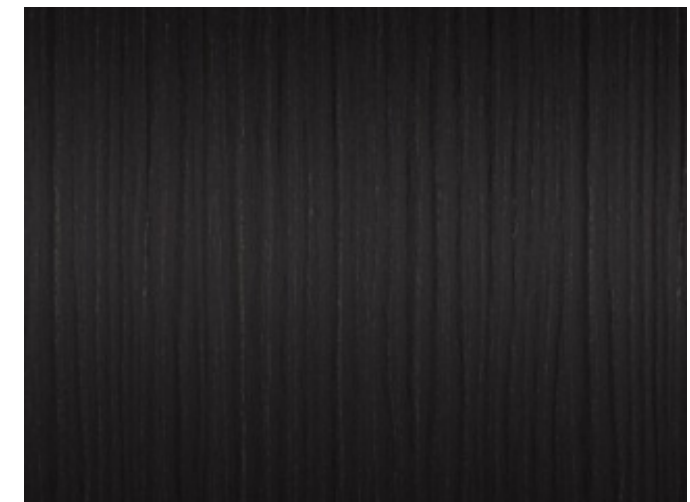
H20+781 - Natural Grain Brown Magnolia w/ Aluminum Mercedes-Benz Stars

EQE 500 4M Only



07H+689 - Natural Grain Yacht-Design Norway Maple Wood

EQE 500 4M Only



H08+775 - Natural Grain Anthracite Linden Wood

EQE 500 4M Only

<i>Code</i>	<i>Description</i>	<i>Availability</i>	<i>Price</i>
51H+331	Laser-Cut Backlit Trim with Mercedes-Benz Star Pattern	EQE350X, EQE350X4	\$0
H08	Natural Grain Anthracite Linden Wood	EQE350X, EQE350X4	\$0
H20	Natural Grain Brown Magnolia Wood w/ Mercedes-Benz Star Pattern	EQE350X, EQE350X4	\$0
07H	Natural Grain "Yacht-Design" Norway Maple Wood	EQE350X, EQE350X4	\$1,515
H67	Anthracite 3D Relief-Optic Trim	EQE350X, EQE350X4	\$540
H20+781	Natural Grain Brown Magnolia w/ Aluminum Mercedes-Benz Stars EQE 500 4M Only	EQE500X4	\$0
07H+689	Natural Grain Yacht-Design Norway Maple Wood EQE 500 4M Only	EQE500X4	\$1,515
H08+775	Natural Grain Anthracite Linden Wood EQE 500 4M Only	EQE500X4	\$0



Packages

<i>Code</i>	<i>Packages</i>	<i>Availability</i>	<i>MSRP</i>
DY1	<p>Exclusive Trim</p> <p>Requires Driver Assistance Package (DA2) and DIGITAL LIGHT Package (DA4)</p> <ul style="list-style-type: none"> ▪ 878 - Active Ambient Lighting ▪ U19 - MBUX Augmented Reality for Navigation 	All Models	\$850
DY2	<p>Pinnacle Trim</p> <p>Requires Driver Assistance Package (DA2) and DIGITAL LIGHT Package (DA4). Requires Energizing Comfort (PBP or PBR)</p> <ul style="list-style-type: none"> ▪ P21 - Air Balance Package ▪ 589 - Front Door Animated Logo Projectors ▪ 878 - Active Ambient Light ▪ 72B - 100W USB-C Package ▪ 581 - Four-Zone Climate Control ▪ 444 - Head-Up Display ▪ U19 - MBUX Augmented Reality for Navigation 	All Models	\$0
DA4	<p>DIGITAL LIGHT Package</p> <ul style="list-style-type: none"> ▪ 42U - Projection Function ▪ 316 - DIGITAL LIGHT w/ LED Lightband ▪ 43U - Animation Projection Function ▪ PAX - DIGITAL LIGHT Package 	All Models	\$1,200
DB8	<p>Front Multicontour Seating Package</p> <p>Not with MB-TEX Upholstery</p> <ul style="list-style-type: none"> ▪ 401 - Ventilated Front Seats ▪ 436 - Comfort Front Headrests w/ Pillow ▪ 399 - Front Multicontour Seats w/ Massage Function ▪ 902 - Rapid-Heating Front Seats 	All Models	\$2,350
DB0	<p>Winter Package</p> <p>Requires Ventilated Front Seats (401) or Front Multicontour Seating Package (DB8)</p> <ul style="list-style-type: none"> ▪ 875 - Heated Windshield Washer System ▪ 443 - Heated Steering Wheel ▪ 872 - Heated Rear Seats ▪ 597 - Heated Windshield 	All Models	\$1,500
DG1	<p>AMG Line Exterior Package</p> <p>Requires RRT or RWX Wheels</p> <ul style="list-style-type: none"> ▪ 772 - AMG Line Styling ▪ AMG Line Rear Bumper with Black and Chrome Accents ▪ P31 - AMG Line Exterior Package ▪ AMG Line Front Bumper with A-Wing Trim in High-Gloss Chrome ▪ Side Skirts in Black 	All Models	\$2,200
DA2	<p>Driver Assistance Package</p> <p>Requires Exclusive (DY1) or Pinnacle (DY2)</p> <ul style="list-style-type: none"> ▪ K34 - Route-Based Speed Adaptation with End of Traffic Jam Function ▪ 272 - Evasive Steering Assist ▪ 513 - Traffic Sign Assist ▪ 233 - Active Distance Assist DISTRONIC ▪ 266 - Active Steering Assist with Hands-Off Warning ▪ 237 - Active Blind Spot Assist ▪ 292 - PRE-SAFE® Impulse Side ▪ 546 - Active Speed Limit Assist ▪ K33 - Extended Automatic Restart in Traffic 	All Models	\$1,250



Options

Factory Options

<i>Code</i>	<i>Options</i>	<i>Availability</i>	<i>MSRP</i>
216	10-Degree Rear Axle Steering Standard EQE 500 4MATIC	EQE350X, EQE350X4	\$1,300
21U	Dashcam	All Models	\$200
24U	Illuminated Mercedes-Benz Star	All Models	\$500
401	Ventilated Front Seats Also included in Multicontour Front Seat Package (DB8)	All Models	\$450
443	Heated Steering Wheel	All Models	\$250
444	Head-Up Display Requires Exclusive Trim (DY1). Included in Pinnacle Trim (DY2)	All Models	\$1,100
451	3D Instrument Cluster	EQE350X, EQE350X4	\$990
489	AIRMATIC Air Suspension Includes Adaptive Damping System (215)	All Models	\$1,900
5B9	Black Carpeted Trunk Mat Recommended with Neva Grey Interiors	All Models	\$90
61U	Black Microfiber Headliner Not with MB-Tex Upholstery. Requires Black Leather or Nappa Leather.	All Models	\$1,600
846	Illuminated Running Boards	All Models	\$650
PAF+596	Acoustic Comfort Package w/ Heat, Noise & Infrared Glass Requires Exclusive Trim (DY1) or Pinnacle Trim (DY2)	All Models	\$1,100
PBR	Energizing Comfort Package Plus Requires Pinnacle Trim (DY2), Front Multicontour Seat Package (DB8) and either Winter Package (DB0) or Heated Steering Wheel (443)	All Models	\$0
PBP	Energizing Comfort Package Requires Pinnacle Trim (DY2)	All Models	\$0
P53+914	ENERGIZING AIR CONTROL PLUS w/ HEPA Filter	All Models	\$450
883 (New)	Soft Close Doors	All Models	\$0
P55	Night Package Requires AMG Line (DG1)	All Models	\$200
550	Class II Trailer Hitch Available only on 4MATIC models	EQE500X4, EQE350X4	\$600



VPC Installed Options

<i>Code</i>	<i>Options</i>	<i>Availability</i>	<i>MSRP</i>
D43	All-Season Floor Mats		\$350
D07	Wheel Locking Bolts		\$175
D49	First-Aid Kit		\$35
D50	Premium Touchscreen Cleaning Cloth Standard EQE 500 4M		\$30
D12 (New)	Chrome Roof Spoiler Trim		\$375
D37	MB Star Set (License Plate Frame & Valve caps)		\$70



Specifications

EQE350X



Powertrain

Powertrain	Rear Permanently Synchronous Electric Motor with 215 kW Output
Power	288 Horsepower
Torque	417 lb-ft of Torque
Final Drive Ratio Rear	9.644

Interior Dimensions

Head Room Front	39.5 in
Leg Room, Driver	40.6 in
Elbow Room, Front (in)	60.98
Hip Room, Front	56.3 in
Shoulder Room, Front	58.8 in
Head Room Rear	39.4 in
Leg Room, Rear	40.6 in
Cargo Room, Behind Second Row Seat (cu-ft)	14.0
Cargo Room, with Second Row Folded (cu-ft)	55.0

Drivetrain and Battery

Drive Configuration	Rear Wheel Drive
Battery Size	96 kWh Lithium-Ion Battery
Suspension	Comfort Suspension w/ Selective Damping
Number of High-Voltage Modules	10
Number of High-Voltage Battery Cells	180
AC Charging Capacity (240V)	9.6 kW
AC Charging Time (240V)	11.5h (0-100%)
DC Fast Charging Capacity	170 kW
DC Fast Charging Time	32 minutes (10-80%)

Range & Efficiency

Efficiency Figures	36 kWh/100mi
City/Hwy MPGe	TBD
EPA-Certified Range	307mi

Performance

Top Speed	130 mph
Acceleration 0-60 mph	6.4 seconds

Exterior Dimensions

Vehicle Length (in)	191.85
Vehicle Width (w/ Mirrors)	84.3 in
Vehicle Width (w/o Mirrors)	76.4 in
Vehicle Height (in)	65.78
Wheelbase	119.3 in
Turning Circle	40.4 ft
Turning Circle w/ 10-Degree Rear Axle Steering	34.4 ft
Track Width Front (in)	60.86
Track Width Rear (in)	65.6
Curb Weight (lbs)	5,412.3
Ground Clearance	6.37
Approach Angle at Max Load	17.5°
Departure Angle at Max Load	21.8°
Ramp Brakeover Angle at Max Load	13.2°
Brake Disc Diameter Front/Rear (in)	15.35 / 14.88
Front Overhang Length (in)	34.76
Rear Overhang Length (in)	37.4
Permissible Gross Vehicle Weight (lbs)	6,558.75



Powertrain

Powertrain	Dual Permanently Synchronous Electric Motors with 215 kW Total Output
Power	288 Horsepower
Torque	564 lb-ft of Torque

Interior Dimensions

Head Room Front	39.5 in
Leg Room, Driver	40.6 in
Elbow Room, Front (in)	60.98
Head Room Rear	39.4 in
Shoulder Room, Front	58.8 in
Hip Room, Front	56.3 in
Leg Room, Rear	40.6 in
Cargo Room, Behind Second Row Seat (cu-ft)	14.0
Cargo Room, with Second Row Folded (cu-ft)	55.0

Drivetrain and Battery

Drive Configuration	4MATIC All-Wheel Drive
Battery Size	90.56 kWh Lithium-Ion Battery
Suspension	Comfort Suspension w/ Selective Damping
Number of High-Voltage Modules	10
AC Charging Capacity (240V)	9.6 kW
AC Charging Time (240V)	10.75h (0-100%)
DC Fast Charging Capacity	170 kW
DC Fast Charging Time	32 minutes (10-80%)

Range & Efficiency

Efficiency Figures	40 kWh/100mi
City/Hwy MPGe	88/82/85 Combined
EPA-Certified Range	265 mi

Performance

Top Speed	130 mph
Acceleration 0-60 mph	6.2 seconds

Exterior Dimensions

Vehicle Length	191.5 in
Vehicle Width (w/ Mirrors)	84.3 in
Vehicle Width (w/o Mirrors)	76.4 in
Vehicle Height (in)	65.78
Wheelbase	119.3 in
Turning Circle	40.4 ft
Turning Circle w/ 10-Degree Rear Axle Steering	34.5 ft
Track Width Front (in)	65.11
Track Width Rear (in)	65.66
Curb Weight (lbs)	5,577.6
Front Overhang Length (in)	34.76
Rear Overhang Length (in)	37.4
Permissible Gross Vehicle Weight (lbs)	6,790.24
Brake Disc Diameter Front/Rear (in)	15.35 / 14.88
Ramp Brakeover Angle at Max Load	13.2°
Departure Angle at Max Load	21.8°
Approach Angle at Max Load	17.5°
Ground Clearance	6.37

Powertrain

Powertrain	Dual Permanently Synchronous Electric Motors with 300 kW Output
Power	402 Horsepower
Torque	633 lb-ft of Torque

Interior Dimensions

Cargo Room, with Second Row Folded (cu-ft)	55.0
Cargo Room, Behind Second Row Seat (cu-ft)	14.0
Leg Room, Rear	40.6 in
Head Room Rear	39.4 in
Shoulder Room, Front	58.8 in
Hip Room, Front	56.3 in
Leg Room, Driver	40.6 in
Head Room Front	39.5 in
Elbow Room, Front (in)	60.98

Drivetrain and Battery

Drive Configuration	4MATIC All-Wheel Drive
Battery Size	96 kWh Lithium-Ion Battery
Suspension	Comfort Suspension w/ Selective Damping
Number of High-Voltage Modules	10
AC Charging Capacity (240V)	9.6 kW
AC Charging Time (240V)	11.5 hours (10-100% SOC)
DC Fast Charging Capacity	170 kW
DC Fast Charging Time	32 minutes (10-80%)

Range & Efficiency

Efficiency Figures	38 kWh / 100mi
City/Hwy MPGe	91 city / 86 highway / 89 combined
EPA-Certified Range	287 mi

Performance

Top Speed	130 mph
Acceleration 0-60 mph (sec)	4.7

Exterior Dimensions

Vehicle Length (in)	192.13
Vehicle Width (w/ Mirrors) (in)	84.3
Vehicle Width (w/o Mirrors) (in)	76.4
Vehicle Height (in)	65.78
Wheelbase	119.3 in
Turning Circle	40.4 ft
Turning Circle w/ 10-Degree Rear Axle Steering	34.5 ft
Track Width Front (in)	65.12
Track Width Rear (in)	65.31
Curb Weight (lbs)	5,681.31
Front Overhang Length (in)	34.76
Rear Overhang Length (in)	37.4
Permissible Gross Vehicle Weight (lbs)	6,790.24
Brake Disc Diameter Front/Rear (in)	15.35 / 14.88
Ramp Brakeover Angle at Max Load	13.3°
Departure Angle at Max Load	22.2°
Approach Angle at Max Load	17.7°
Ground Clearance	6.37



Options In Detail



Gallery

