

2022 EQS Sedan Order Guide



Table of Contents

1	General Information
2	What's New
3	Models
4	Equipment
4.1	Standard Equipment
4.2	Exterior Paint Colors
4.3	Wheels
4.4	Interior Upholstery
4.6	Interior Trims
4.7	Packages
4.8	Options
4.9	Specifications
5	Options In Detail
6	Gallery



General Information

Important Note

The information presented in this guide is based on the most current information available and is intended for internal use only. Mercedes-Benz reserves the right to make changes at any time, without notice, to colors, materials, equipment, special specifications and models.

Pricing may not yet be finalized for some models or options.

Due to variances among monitors and printers the colors that appear on your screen and printouts may not be exact.

For illustrative purposes, some images may show vehicles with European Specification.

Revision History

Date	Description
04/01/2022	<ul style="list-style-type: none">MSRP Updated on EQS 580 4MATIC
03/08/2022	<ul style="list-style-type: none">Updated Product Clarifications section to include AM Radio, additional information on the AMG Line seat massage programs, and AIRMATIC.
02/22/2022	<ul style="list-style-type: none">Edition One section updated with pricing110V Charging Cable (B35) continues to be in extremely limited supply. To learn more about Home Charging options for the EQS driver, see the EV Guide in Cross-Carline information.Fixed issue where 509 Upholstery price was missing on EQS 580 4MAdded information on floor mats in product clarifications section
02/03/2022	<ul style="list-style-type: none">Range-Optimized Summer Tires (R01) are constrained in 3rd Decade April - 3rd Decade May.All-Season Tires (R02) are now available with 20" Wheels on EQS 450+Change to plausi for Manufaktur Neva Grey/Biscaya Blue Nappa Leather (509) upholstery:<ul style="list-style-type: none">Upholstery requires one of: Natural Grain Yacht-Design Trim (H39) or Natural Grain Brown Walnut (H12).Upholstery is not possible with Natural Grain Anthracite Linden (H08)
01/31/2022	AMG Option and Package Pricing Added
01/26/2022	<ul style="list-style-type: none">Updated Product Clarifications section to include Max Range vs. Range in instrument cluster
01/11/2022	<ul style="list-style-type: none">MBUX Interior Assistant Front (77B) now available with all upholsteriesExecutive Rear Seat Package Plus (DB6) now includes new features!<ul style="list-style-type: none">MBUX Interior Assistant Rear (78B)Adaptive Rear Compartment Lighting (236)<ul style="list-style-type: none">Adaptive Rear Compartment Lighting allows the rear passengers to adjust the brightness, size, and color temperature of the rear reading lamps. A warmer tone of light can be set for relaxing, while a cooler light tone can promote concentration when working.Illumination of the light can be adjusted in both size and position - for example, you can focus the light to only shine on a book while reading.Lamps can be controlled via MBUX Voice Assistant, MBUX Interior Assistant, MBUX Rear Tablet, or buttons in the grab handle area.New plausi rules in effect for improvements to Executive Rear Seat Package Plus (DB6) - DB6 Requires MBUX Interior Assistant Front (77B), MBUX Interior Assistant Rear (78B) and Adaptive Rear Compartment Lighting (236)
01/05/2022	<ul style="list-style-type: none">Added product clarifications section based on HQ, customer, and dealer emails to Product ManagementHappy New Year!
12/08/2021	<ul style="list-style-type: none">Integrated Toll Payment System (943) no longer available for MY22.Added note with Executive Rear Seat Package Plus (DB6) that if ordering with a Black upholstery (201, 211, 231, 801, 811), package requires Beltbag (306)
11/16/2021	<ul style="list-style-type: none">Integrated Toll Payment System (943) updated to reflect delayed availability.Added part number in description for 110V Charging Cable (B35)<ul style="list-style-type: none">Part can be ordered through Paragon if vehicle is not equipped ex-factory. Please note part is still on backorder.110V Charging Cable Part #A0005836204Carrying Bag Part#A000899230064What's New Section updated to add all MY22 Credit Codes in detail
11/08/2021	<ul style="list-style-type: none">Added section in Options in Detail to describe functions of DIGITAL LIGHT for the EQS SedanCorrected torque value for EQS 450+ to 417 lb-ftAdded information about limited availability for B35 110V Charging CableEnergizing Comfort (PBS) is constrained. Feature requires Air Balance Package (P21), which is effected by the semi-conductor shortage.
11/02/2021	<ul style="list-style-type: none">Automatic Comfort Door Package (DH0) has been delayed until MY23Temporary restriction: MANUFAKTUR Neva Grey / Biscaya Blue Nappa Leather (509) is only available with Natural Grain Yacht-Design Brown Walnut with Aluminum Lines (H39). Restriction to be lifted in 2-3 weeks.
11/01/2021	<ul style="list-style-type: none">Corrected Exclusive and Pinnacle trim prices on EQS 580 4M and EQS 450+Fixed issue where Pinnacle trim price was not showing on EQS 580 4MCorrected MBUX Hyperscreen Package (DA0) Price on EQS 450+Added clarification in Trim Level descriptions to match mononey logic - MSRPs shown are the sum of all required equipment (Package Price + Plausi Driven Standalones). MSRP shown does not include D&D
10/26/2021	<ul style="list-style-type: none">Corrected error in paints section which showed that certain paints were unavailableBeltbag Rear Seatbelt Airbag (306) added to Standalone Options.<ul style="list-style-type: none">If ordering Executive Rear Seat Package Plus (DB6), Beltbag is always included with upholsteries: 201, 211, 231, 801, and 811.Active Ambient Lighting (878) added to standalone section for pricing transparency, feature is not available for ordering for MY22.Illuminated Seatbelt Buckles (561) added to standalone options<ul style="list-style-type: none">Feature is included with MANUFAKTUR Neva Grey / Biscaya Blue Upholstery (509) only and is not available with any other interior.
10/20/2021	<ul style="list-style-type: none">Due to challenges with the semi-conductor shortage, Air Balance Package (P21) is constrained with limited availability for the remainder of MY22.<ul style="list-style-type: none">Credit Code D9D will indicate vehicles affected that will only have the ionization function of Air Balance Package (P21)Corrected error in Pinnacle trim description
10/08/2021	<ul style="list-style-type: none">Corrected issue where pricing was not displaying for EQS 450 optional equipmentAdded EPA ranges for EQS 450 & EQS 580 4M
09/21/2021	<ul style="list-style-type: none">MSRP, Package, and Standalone Option Pricing addedEdition One content updated to remove Twilight Blue variant per NCU communicationMBUX Hyperscreen constraint added on EQS 450+Twilight Blue Metallic (842) now available for MY22Minor corrections to package descriptions to add clarification and correct errorsAdded D53 All-Season Floor mats for Pinnacle Trim as VPC option (new option code required from D43 due to difference in backseat variants)
09/20/2021	Initial publication of AMG EQS DOG
09/08/2021	<ul style="list-style-type: none">Automatic Comfort Doors (P24) has been moved from standalone into a new Automatic Comfort Doors Package (DH0). Availability of feature is still TBD.Specifications updated to add vehicle height and ground clearanceAugmented Reality Head-Up Display (445) constrained on EQS450+ only
08/03/2021	<ul style="list-style-type: none">Rear Beltbag (306) removed from Executive Rear Seat Package Plus (DB6)Corrected Exclusive Trim (DY1) description to remove Ventilated Front Seats, which are now standard equipment.Corrected Premium Trim (DY0) description to remove Active Ambient Light (See 7/13 update)
07/13/2021	<ul style="list-style-type: none">Update: As you are aware, MBUSA is experiencing challenges with the availability of semiconductor components due to the worldwide shortage. This has caused the addition and/or removal of certain options on vehicles. A summary of the changes is below:<ul style="list-style-type: none">Active Ambient Lighting (878) has been replaced by 64-Color Ambient Lighting (894) as standard equipment on the EQS. 64-Color Ambient Lighting looks identical to Active Ambient Lighting, and still contains 10 Color Worlds and Seat Contour Ambient Lighting.Automatic Comfort Doors removed from Exclusive and Pinnacle Trim details until details on availability are confirmed by HQUpdated Standard Equipment section to include:<ul style="list-style-type: none">Complementary Maintenance for 2 Years / 20k Miles2 years of Complementary 30-Minute DC Fast Charging Sessions on the Electrify America Network (https://www.electrifyamerica.com/locate-charger/ to find an Electrify America charger near you)
07/02/2021	<ul style="list-style-type: none">New standard equipment on EQS!<ul style="list-style-type: none">EQS 450 -> Ventilated Seats (401) and 10-Degree Rear Axle Steering (216)EQS 580 4MATIC -> Ventilated Seats (401), 10-Degree Rear Axle Steering (216), AMG Line Exterior Package (DG1), 21" AMG Wheels (RWX or RWY)Trim Levels section revised to show images of features
06/24/2021	<ul style="list-style-type: none">Corrected standard equipment to include SiriusXM on all EQS modelsCorrected Exclusive Trim to include Four-Zone Climate ControlCorrected vehicle specifications with new dataAdded images in Options Detail Section for Comfort Seat vs. AMG Line Interior Sport Seat
06/10/2021	<ul style="list-style-type: none">Corrected NomenclatureCorrected error in standard equipment - charging port door is push to openCorrected floor mat color for MANUFAKTUR interiorSpecifications updated - added weight, headroom, legroom, and updated turning circle
06/01/2021	<ul style="list-style-type: none">Microfiber Touchscreen Cleaning Cloth (D50) now comes with MBUX Hyperscreen (standard equipment on EQS 580, included in DA0 Package with EQS 450+)Equipment clarification - Comfort Front Headrests and Rear Headrest Pillows are Standard equipment. Front Headrest Pillows are included with Front Multicontour Seats (399), and with Exclusive and Pinnacle Trims (DY1, DY2)EQS 580 4M torque corrected to 631 lb-ft
05/26/2021	<ul style="list-style-type: none">Updated Options in Detail section to include information on Energizing Air Control Plus with HEPA Filtration System and Comfort DoorsImportant! The following equipment is currently required on all EQS orders<ul style="list-style-type: none">EQS 450+: Ventilated Seats (401), 10-Degree Rear Axle Steering (216)EQS 580 4M: AMG Line Exterior Package (DG1), AMG Line Wheel (Choice of RWX or RWY), Ventilated Seats (401), 10-Degree Rear Axle Steering (216)Note: Ventilated Seats are already included in Exclusive and Pinnacle Trims
05/25/2021	<ul style="list-style-type: none">Trim levels updated with new cross-carline nomenclature (Premium, Exclusive, Pinnacle)Automatic Comfort Doors temporarily delayed
05/21/2021	<ul style="list-style-type: none">Technical specifications and vehicle dimensions added
05/14/2021	<ul style="list-style-type: none">Edition One updates<ul style="list-style-type: none">Edition One in Two-Tone Paint is now available as an Pinnacle Trim model with Executive Rear Seat Package Plus. (No changes to Edition One in Twilight Blue)Added clarification to Pinnacle Trim & Executive Rear Seat Package Plus:<ul style="list-style-type: none">EQS is always a 5-seat configurationRear seat folds flat even with Executive rear seat configuration.
04/27/2021	<ul style="list-style-type: none">Added Natural Grain Brown Walnut Dashboard & Door Trim (H12) to EQS 450+Corrected Pinnacle Trim (DY2) description to include memory for rear seats



Product Clarifications & Info

Top answers and clarifications on the EQS based on your and customer emails.

- **Max Range vs. Range in Instrument Cluster**

- Max Range is the "ideal conditions" range, it's what the car is capable of with all eco functions enabled, and a smooth driving style
- Range is calculated real-life range. The EQS uses your historic driving style, as well as current use of consumers (such as AC/Heat, Seat Heating/Ventilation/Massage)
- A driver can get closer to Max Range by enabling eco functions in MBUX. In MBUX, tap Home / EQ Menu / Range. This menu shows features of how to improve your range and can be individually selected. Tap the middle "planet" icon to turn on all Eco functions.

- **AIRMATIC**

- Airmatic is not manually adjustable in the EQS, and the vehicle does not have a 'lift' button. To lift the vehicle **only for transport** please refer to owner's manual, page 375.
- Airmatic still features automatic adjustments such as selectable damping modes (via DYNAMIC SELECT), load leveling, and speed-sensitive lowering.

- **110V Charging Cable (B35)**

- 110V Charging Cable is on backorder due to a constraint, and is in a critically low level of supply. Please refer to the EV Guide in the Cross Carline section on information on how to set customers up for At-Home Charging using ChargePoint and qMerit.
- Part can be ordered with the following part numbers once available: 110V Charging Cable Part #A0005836204. Carrying Bag Part#A000899230064

- **Multicontour Front Seats with Massage (399)**

- AMG Line Interior Seats (7U4) do not have the Hot Relaxing Back, Hot Relaxing Shoulders, or Wave Massage programs.

- **Pinnacle Rear Seats**

- All EQS seating configurations are 5-seat. There is no 4-seat configuration.
- The Pinnacle rear seat folds flat at a 60/40 split, with a power release in the trunk. Standard rear seat (Premium, Exclusive) folds flat at 60/40/20 split with a manual release at the top of the seat.

- **Electrify America & Maintenance Offer**

- 2-Years of Complementary Electrify America DC Charging & Maintenance is standard on all EQS Sedans. Customers can take advantage of this program no matter the finance product used.
- 2-Years of Complementary charging is **ONLY** on the Electrify America network.

- **Headrest Pillows**

- Front Headrest Pillows are included with Front Multicontour Seats w/ Massage (399) with the standard interior seat only.
- Front Headrest Pillows are not available with AMG Line Interior (DG2) seats.
- Rear headrest pillows are included as standard equipment. With Pinnacle Trim (DY2), rear headrest includes larger pillows.

- **Heated Steering Wheel**

- EQS does not have switch on steering column to turn on steering wheel heating. Function is controlled via MBUX, MBUX Voice Assistant, and can additionally be programmed to automatically be enabled with Seat Heating.
- Refer to owner's manual, page 116 for how to couple, or decouple steering wheel heating from seat heating.

- **EV 101, Charging and FAQs**

- Please refer to the EV Guide, under Cross-Carline.

- **Carpeted Floor Mats**

- Images used in the Dealer Ordering Guide reflect a European-Specification EQS. All images show light-colored floormats.
- US-Specific Logic is as follows:
 - Macchiato Beige upholstery (205/805) - floormats are in Space Grey
 - Neva Grey / Sable Brown upholsteries (209/229) - floormats are in Sable Brown
 - Neva Grey / Biscaya Blue upholstery (509)- floormats are in **Neva Grey**. It's recommended to include All-Season Floormats (D43 or D53) with this upholstery

- **AM Radio**

- The EQS does not feature AM Radio. A common issue with electric cars is that the drivetrain and components heavily interfere with AM Radio signals. This results in static, buzzing, and distorted sounds that can overwhelm and completely block out the broadcast.
- **Solutions for Customers include:**
 - SiriusXM Satellite Radio for Sports, News and Talk (<https://www.siriusxm.com/channels>). A trial subscription of SiriusXM is included with all EQS Sedans.
 - Smartphone Integration - use the Android or iPhone apps "TuneIn" or "iHeart Radio" to stream AM stations with CarPlay or Android Auto. Smartphone Integration is standard on all EQS Sedans.
 - HD Radio - use <https://hdradio.com/stations> to find news, sports, and talk radio that may be simulcast on HD FM Radio. HD Radio is standard on all EQS Sedans.

Latest on Credit Codes for MY22 EQS

The following credit codes for missing equipment may be issued on EQS models for MY22.

- **D9A Missing Standard Valet / Beginner Driver Mode** - these driver modes can limit acceleration and top speed when enabled
- **D9B Missing Standard Ventilated Seats** - For vehicles equipped with heated seats only
- **D9C Missing Standard 10-Degree Rear Axle Steering** - For vehicles equipped with 4.5-Degree Rear Axle Steering only
- **D9D Missing Air Balance Functionality** - For vehicles affected by the semi-conductor shortage, where the fragrance function is missing from Air Balance Package.
- **D9H Missing 110V Home Charger Cable** - For vehicles affected by semi-conductor shortage, where the charging cable was omitted from the factory.
- **D9I Missing Standard AMG Line Exterior Package** - *EQS 580 4MATIC only* - DG1 Package is standard on the EQS 580 4M. Some early production cars were equipped with standard body styling.
- **D9J Missing Standard 21" Wheels** - *EQS 580 4MATIC only* - 21" wheels are standard equipment on the EQS 580 - early production cars were equipped with 20" wheels receive this credit.
- **D9Y Missing Automatic Comfort Doors** - A small number of vehicles have all of the codes for the Automatic Comfort Door Package, but the vehicle does not actually have the functionality.

EQS Edition One

EQS 580 4MATIC Edition One MSRP, including D&D - \$169,900

Paint, Upholstery & Trim

- Two-Tone Cirrus Silver lower, Obsidian Black upper paint (922/197/C35)
- Edition One Neva Grey / Stratus Blue Nappa Leather (519)
- Natural Grain Yacht-Design Brown Walnut with Aluminum Lines (H39+697)
- Neva Grey Microfiber Headliner (69U)

Packages

- **Pinnacle Trim (DY2)** - Front Multicontour Seats with Massage, Four-Zone Climate Control, Power Rear Seats, Heated and Ventilated Rear Seats, Rear Side-Impact Air Bags, Comfort Rear Center Armrest with Wireless Charging
- **Executive Rear Seat Package Plus (DB6)** - Multicontour Rear Seats with Massage, Rear Neck and Shoulder Heating, Comfort Center Rear Armrest with MBUX Tablet and Wireless Charging
- **EQS Edition One Package (DV1)** - Edition One Exterior badges, Lower Window Beltline Painted in High-Gloss Black, Carpeted Floor mats with "Edition One" lettering, Illuminated Door Sill Panels with "Edition One" lettering, Vehicle Key in Black with Rose Gold Accents, Laminated Safety Glass w/ Infrared Protection, Energizing Air Control Plus w/ HEPA Filter

Additional Equipment

- 21" AMG Multispoke Wheels with Black Accents (RWY)
- Energizing Comfort w/ Energizing Nature (PBS)
- Air Balance Package (P21)
- Heated Steering Wheel (443)
- Head-Up Display (444)
- Illuminated Seatbelt Buckles (561)
- Active Ambient Lighting (878)
- Rapid Heating Front Seats (902)





Interior Experience Comparison

MBUX Hyperscreen

Standard on EQS 580 4MATIC, Optional on EQS 450+

- 56" Curved Gorilla Glass with Reflection and Scratch Resistant Layers
- 12.3" Driver Display, 17.7" OLED Central Display, 12.3" OLED Passenger Display
- Choice of Trim on Center Console and Doors only

Standard MBUX Display

Standard on EQS 450+

- 12.3" Freestanding Driver Display
- 12.8" OLED Central Display
- Choice of Trim on Dashboard and Doors only. Center Console below portrait display always in Piano Black



Two-Years of Worry-Free Ownership

Enjoy Complementary DC Fast Charging and Included Maintenance on all EQS Sedans.

- **Complementary DC Fast Charging** - On Electrify America's ultra-fast network, drivers of the EQS will enjoy complementary 30-minute DC Fast Charging sessions for 24 months after account activation.
 - [Details on Electrify America Partnership >](#)
 - [Find an Electrify America DC Fast Charger Near You >](#)
- **Complementary 2 Years / 20,000 mi Maintenance** - Scheduled maintenance is included for all EQS Sedans, for 2 years / 20,000 miles.

Important note: Complementary Electrify America Charging and 2-years of maintenance offer is **included on all EQS Sedans**. Customers can take advantage of this program utilizing any finance product (lease/purchase). Using the 2+2+2 Lease program is not a prerequisite or requirement.



EQS Trim Levels

Available in three equipment levels, with streamlined packages and single options, ordering an EQS has never been this easy. Choose from one of three Trims and then select standalone options for each. Design choices, including wheels, paint, and upholstery, are openly available across all three Trims, to be tailored to your clients' tastes.

Premium Trim

Code DY0

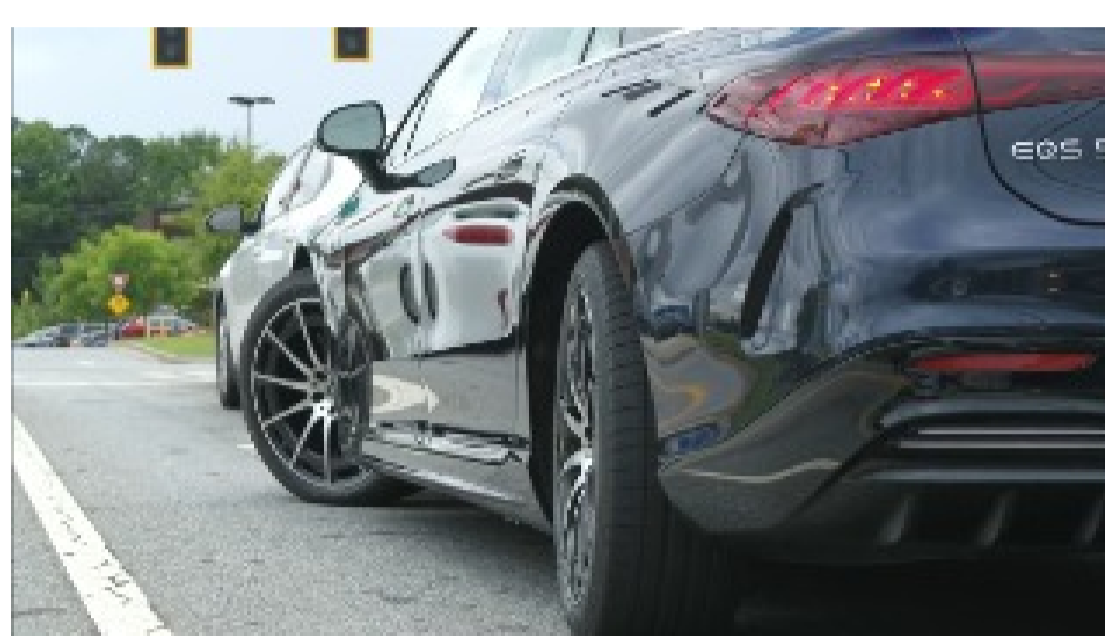
\$102,310 (EQS 450+)

\$125,900 (EQS 580 4M)

Premium Trim includes all standard equipment of the EQS. Highlights include:

- Driver Assistance Package
- Parking Assistance Package with Surround View Camera
- 10-Degree Rear Axle Steering
- Power Tilt/Sliding Panorama Roof
- Leather Seating Surfaces
- Heated and Ventilated Front Seats
- Burmester 3D Sound System
- 64-Color Ambient Lighting, including Seat Contour Ambient Lighting and 10 Color Worlds

For a full listing of Standard Equipment, please refer below to the Standard Equipment section.



Exclusive Trim

Code DY1

\$105,785 (EQS 450+)

\$129,357 (EQS 580 4M)

Includes all content from Premium Trim, and adds the following:

- Multicontour Front Seats with Massage
- Head-Up Display (Must choose one of 444 or 445)
- Rapid-Heating Front Seats*
- Four-Zone Climate Control
- Air Balance Package with EQS-specific NO.6 Linen scent (Currently Restricted)

*Deleted when ordering AMG Line Interior (DG2)

MSRPs shown include \$1,575 DY1 package price plus sum of required standalone options included in Exclusive Trim. D&D excluded.



Pinnacle Trim

Code DY2

\$108,560 (EQS 450+)

\$132,150 (EQS 580 4M)

Includes all content from Premium and Exclusive Trim, and adds the following:

- Power Rear Seats
- Heated and Ventilated Rear Seats
- Comfort Rear Center Armrest with Wireless Charging (wireless charger is in the covered storage area with Executive Rear Seat Plus)
- Comfort Rear Headrests (with larger rear headrest pillows)
- 2x 100W USB-C Ports in the Rear
- Note - Pinnacle Trim is a 5-Seat Configuration

MSRPs shown include \$4,350 DY2 package price plus sum of required standalone options included in Pinnacle Trim. D&D excluded.



Models



EQS450V (297.123)

- MSRP: \$102,310
- Powertrain: Rear Permanently Synchronous Electric Motor with 245 kW Output
- Power: 329 Horsepower
- Torque: 417 lb-ft of Torque
- Launch Date: Fall 2021



EQS580V4 (297.144)

- MSRP: \$125,900
- Powertrain: Dual Permanently Synchronous Electric Motors with 385 kW Total Output (One Motor on Each Axle)
- Power: 516 Horsepower
- Torque: 631 lb-ft of Torque
- Launch Date: Fall 2021



Standard Equipment

EQS450V



Performance & Handling

- Rear 245 kW Permanently Synchronous Electric Motor
- AIRMATIC Air Suspension with Adaptive Damping System
- DYNAMIC SELECT
- Rear Lip Spoiler
- 9.6 kW AC Charging
- 107.8 kWh High Voltage Battery
- 10-Degree Rear Axle Steering
- 20" Wheels
- 200 kW DC Fast Charging
- Adjustable Regenerative Braking with Steering Wheel Paddles

Comfort & Convenience

- MBUX Multimedia System with 12.8" OLED Portrait Display & 12.3" Driver Display
- 6x 100W USB-C Chargers
- Acoustic Comfort Package
- Power Tilt/Sliding Panorama Roof
- MBUX Augmented Reality for Navigation
- Power Front Seats with Contour Ambient Lighting
- 2-Zone Automatic Climate Control with Pre-Entry Climate Control
- Front Wireless Smartphone Charger
- Rear Headrest Pillows
- Heated and Ventilated Front Seats
- 2 Years of Complementary 30-Minute DC Fast Charging Sessions on the Electrify America Network
- Burmester 15-Speaker, 710W Sound System with 3D Sound, EQ Sound Experience, and Sound Personalization
- KEYLESS-GO Comfort Package with Seamless Door Handles and Hands-Free Access
- 64-Color Ambient Lighting
- Leather Seats
- Garage Door Opener
- Fingerprint Scanner for MBUX Profile Authentication
- Wireless Smartphone Integration (Apple CarPlay & Android Auto)
- Front Comfort Headrests
- SiriusXM Satellite Radio
- Complementary Maintenance for 2 Years / 20,000 Miles

Safety & Security

- Driver Assistance Package
- Parking Package with Surround View System and PARKTRONIC
- GUARD 360 Vehicle Protection Plus
- Rear LED Taillamps with Lightband and Helix Signature
- Interior and Driver's Side Automatically Dimming Mirrors
- PRE-SAFE System with PRE-SAFE Impulse Side
- Exterior Acoustic Pedestrian Protection
- Power Folding Exterior Mirrors with Logo Projection
- DIGITAL LIGHT with LED Lightband
- TIREFIT Tire Sealing Compound and Air Compressor
- Active Highbeam Assist



Performance & Handling

- Dual Permanently Synchronous Electric Motors with 385 kW Total Output
- AIRMATIC Air Suspension with Adaptive Damping System
- DYNAMIC SELECT
- Rear Lip Spoiler
- 9.6 kW AC Charging
- AMG Line Exterior Package
- 107.8 kWh High Voltage Battery
- 10-Degree Rear Axle Steering
- 21" Wheels
- 200 kW DC Fast Charging
- Adjustable Regenerative Braking with Steering Wheel Paddles

Comfort & Convenience

- MBUX Hyperscreen with 12.3" Driver Display, 17.7" OLED Central Display, and 12.3" OLED Passenger Display
- 6x 100W USB-C Chargers
- Acoustic Comfort Package
- Power Tilt/Sliding Panorama Roof
- MBUX Augmented Reality for Navigation
- Power Front Seats with Contour Ambient Lighting
- 2-Zone Automatic Climate Control with Pre-Entry Climate Control
- Front Wireless Smartphone Charger
- Rear Headrest Pillows
- SiriusXM Satellite Radio
- 2 Years of Complementary 30-Minute DC Fast Charging Sessions on the Electrify America Network
- Burmester 15-Speaker, 710W Sound System with 3D Sound, EQ Sound Experience, and Sound Personalization
- KEYLESS-GO Comfort Package with Seamless Door Handles and Hands-Free Access
- 64-Color Ambient Lighting
- Leather Seats
- Garage Door Opener
- MBUX Profile Authentication via Fingerprint Scanner & Facial Recognition
- Wireless Smartphone Integration (Apple CarPlay & Android Auto)
- Comfort Front Headrests
- Heated and Ventilated Front Seats
- Complementary Maintenance for 2 Years / 20,000 Miles

Safety & Security

- Driver Assistance Package
- Parking Package with Surround View System and PARKTRONIC
- GUARD 360 Vehicle Protection Plus
- Rear LED Taillamps with Lightband and Helix Signature
- Interior and Driver's Side Automatically Dimming Mirrors
- PRE-SAFE System with PRE-SAFE Impulse Side
- Exterior Acoustic Pedestrian Protection
- Power Folding Exterior Mirrors with Logo Projection
- DIGITAL LIGHT with LED Lightband
- TIREFIT Tire Sealing Compound and Air Compressor
- Active Highbeam Assist



Paint

Non-Metallic Paints



149 - Polar White

Metallic Paints



197 - Obsidian Black Metallic



346 - Onyx Black Metallic



595 - Nautical Blue Metallic



842 - Twilight Blue Metallic



831 - Graphite Grey Metallic



922 - Cirrus Silver Metallic

MANUFAKTUR Paints



297 - MANUFAKTUR Selenite Grey magno

Requires AMG Line Exterior (DG1)



996 - MANUFAKTUR Cardinal Red Metallic

Not available with 18R Wheel or 509 Upholstery



799 - MANUFAKTUR Diamond White Metallic



C35 - MANUFAKTUR Two-Tone Obsidian Black / Cirrus Silver

Edition One Only

Code	Description	Availability	Price
149	Polar White		\$0
197	Obsidian Black Metallic		\$0
346	Onyx Black Metallic	All Models	\$0
595	Nautical Blue Metallic	All Models	\$0
842	Twilight Blue Metallic	All Models	\$0
831	Graphite Grey Metallic	All Models	\$0
922	Cirrus Silver Metallic	All Models	\$0
297	MANUFAKTUR Selenite Grey magno Requires AMG Line Exterior (DG1)		\$3,250
996	MANUFAKTUR Cardinal Red Metallic Not available with 18R Wheel or 509 Upholstery		\$1,750
799	MANUFAKTUR Diamond White Metallic		\$1,750
C35	MANUFAKTUR Two-Tone Obsidian Black / Cirrus Silver Edition One Only	EQS580V4	\$14,500



Wheels



R61 - 20" Five-Spoke Aero Wheels with Black Accents

Range-Optimized Summer Tires (R01) or All-Season Tires (R02)

20"

MO

255/45 R 20 on 8.5J x 20 ET 33

29R - 20" Five-Spoke Aero Wheels with Mercedes-Benz Star Pattern

Range-Optimized Summer Tires (R01) or All-Season Tires (R02)

20"

MO

255/45 R 20 on 8.5J x 20 ET33

18R - 21" 10-Spoke Wheels with Energy Blue Metallic Accents

Range-Optimized Summer Tires (R01) or All-Season Tires (R02)

21"

R01: MO, R02: MOE Run-Flat

265/40 R 21 on 8.5J x 20 ET 41.5

RWX - 21" AMG Multispoke with Black Accents

Range-Optimized Summer Tires (R01) or All-Season Tires (R02).

21"

R01: MO, R02: MOE Run-Flat

265 / 40 R 21 on 9.5J x 21H2 ET 41.5



RWY - 21" AMG Multispoke with Black Accents

Range-Optimized Summer Tires (R01) or All-Season Tires (R02).

21"

R01: MO, R02: MOE Run-Flat

265/40 R 21 on 9.5 J x 21H2 ET 41.5

00R - 22" 5-Twin Spoke Wheels with Black Accents

Only with Range-Optimized Summer Tires

(R01)

22"

MO

265/35 R 22 on 9.5J x 22 ET 41.5

<i>Code</i>	<i>Wheel Size</i>	<i>Description</i>	<i>Wheel Dimensions</i>	<i>Mobility</i>	<i>Availability</i>	<i>MSRP</i>
R61	20"	Range-Optimized Summer Tires (R01) or All-Season Tires (R02)	255/45 R 20 on 8.5J x 20 ET 33	MO	EQS450V	\$0
29R	20"	Range-Optimized Summer Tires (R01) or All-Season Tires (R02)	255/45 R 20 on 8.5J x 20 ET33	MO	EQS450V	\$0
18R	21"	Range-Optimized Summer Tires (R01) or All-Season Tires (R02)	265/40 R 21 on 8.5J x 20 ET 41.5	R01: MO, R02: MOE Run-Flat	EQS450V	\$1,100
RWX	21"	Range-Optimized Summer Tires (R01) or All-Season Tires (R02).	265 / 40 R 21 on 9.5J x 21H2 ET 41.5	R01: MO, R02: MOE Run-Flat	All Models	\$1,100 (EQS450V) \$0 (EQS580V4)
RWY	21"	Range-Optimized Summer Tires (R01) or All-Season Tires (R02).	265/40 R 21 on 9.5 J x 21H2 ET 41.5	R01: MO, R02: MOE Run-Flat	All Models	\$1,100 (EQS450V) \$0 (EQS580V4)
00R	22"	Only with Range-Optimized Summer Tires (R01)	265/35 R 22 on 9.5J x 22 ET 41.5	MO	EQS450V	\$2,450



Upholstery

Leather



201 - Black / Space Grey Leather



205 - Macchiato Beige / Space Grey Leather



209 - Neva Grey / Sable Brown Leather



211 - Black / Sable Brown Leather



229 - AMG Line Neva Grey / Sable Brown

Requires AMG Line Interior Package (DG2)
Seats feature Digital Rain perforation pattern



231 - AMG Line Black / Space Grey Leather with Red Stitching Accents

Requires AMG Line Interior Package (DG2).
Seats feature Digital Rain perforation pattern

Nappa Leather



801 - Black / Space Grey Nappa Leather

Premium (DY0): Requires Multicontour Front Seats (399) and Rapid Heating Front Seats (902).

Exclusive (DY1): No requirements

Pinnacle (DY2): No requirements

Not available with AMG Line Interior (DG2)



805 - Macchiato Beige / Space Grey Nappa Leather

Premium (DY0): Requires Multicontour Front Seats (399) and Rapid Heating Front Seats (902).

Exclusive (DY1): No requirements

Pinnacle (DY2): No requirements

Not available with AMG Line Interior (DG2)



811 - Black / Sable Brown Nappa Leather

Premium (DY0): Requires Multicontour Front Seats (399) and Rapid Heating Front Seats (902).

Exclusive (DY1): No requirements

Pinnacle (DY2): No requirements

Not available with AMG Line Interior (DG2)

MANUFAKTUR Nappa Leather



509 - MANUFAKTUR Neva Grey / Biscaya Blue Nappa Leather

Requires either Natural Grain Yacht-Design (H39) or Natural Grain Brown Walnut (H12) trims. Not available with Natural Grain Anthracite Linden (H08)

Only available with Exclusive (DY1) or Pinnacle (DY2).

Not available with AMG Line Interior (DG2), or MANUFAKTUR Cardinal Red Paint (996)



519 - Edition One Neva Grey / Stratus Blue Iridescent-Effect Nappa Leather

Only with Edition One (DV1)

<i>Code</i>	<i>Description</i>	<i>Availability</i>	<i>Price</i>
201	Black / Space Grey Leather		\$0
205	Macchiato Beige / Space Grey Leather	All Models	\$0
209	Neva Grey / Sable Brown Leather	All Models	\$0
211	Black / Sable Brown Leather	All Models	\$0
229	AMG Line Neva Grey / Sable Brown	All Models	\$0
231	AMG Line Black / Space Grey Leather with Red Stitching Accents	All Models	\$0
801	Black / Space Grey Nappa Leather	All Models	\$1,370
805	Macchiato Beige / Space Grey Nappa Leather	All Models	\$1,370
811	Black / Sable Brown Nappa Leather	All Models	\$1,370
509	MANUFAKTUR Neva Grey / Biscaya Blue Nappa Leather	All Models	\$4,450
519	Edition One Neva Grey / Stratus Blue Iridescent-Effect Nappa Leather	All Models	\$4,450

<i>Code</i>	<i>Upholstery</i>	<i>Seats</i>	<i>Floor Mats</i>	<i>Upper Dash/Lower Dash</i>	<i>Seat Belts</i>	<i>Steering Wheel</i>	<i>Headliner</i>
201	Black / Space Grey Leather	Black	Black	Space Grey Neotex Upper with Rose Gold Stitching / Black MB-Tex Lower	Black	Black	51U Black or 61U Black Microfiber
205	Macchiato Beige / Space Grey Leather	Macchiato Beige	Space Grey	Space Grey Neotex Upper with Rose Gold Stitching / Macchiato Beige MB-Tex	Macchiato Beige	Macchiato Beige	55U Macchiato Beige
209	Neva Grey / Sable Brown Leather	Neva Grey	Sable Brown	Sable Brown Neotex Upper with Rose Gold Stitching / Neva Grey MB-Tex Lower	Neva Grey	Neva Grey	59U - Grey or 69U Grey Microfiber
211	Black / Sable Brown Leather	Black	Black	Sable Brown Neotex Upper with Rose Gold Stitching / Black MB-Tex Lower	Black	Black	51U Black or 61U Black Microfiber
229	AMG Line Neva Grey / Sable Brown	Neva Grey	Sable Brown	Sable Brown Neotex Upper with Rose Gold Stitching / Neva Grey MB-Tex Lower	Neva Grey	Neva Grey	59U Grey or 69U Grey Microfiber
231	AMG Line Black / Space Grey Leather with Red Stitching Accents	Black	Black	Space Grey Neotex Upper with Red Stitching / Black MB-Tex Lower with Microfiber Accents	Black	Black	51U Black or 61U Black Microfiber
801	Black / Space Grey Nappa Leather	Black	Black	Space Grey Neotex Upper with Rose Gold Stitching / Black MB-Tex Lower	Black	Black	61U Black Microfiber Headliner
805	Macchiato Beige / Space Grey Nappa Leather	Macchiato Beige	Space Grey	Space Grey Neotex Upper with Rose Gold Stitching / Macchiato Beige MB-Tex Lower	Macchiato Beige	Macchiato Beige	55U Macchiato Beige Cloth Headliner
811	Black / Sable Brown Nappa Leather	Black	Black	Sable Brown Neotex Upper with Rose Gold Stitching / Black MB-Tex Lower	Black	Black	61U Black Microfiber Headliner
509	MANUFAKTUR Neva Grey / Biscaya Blue Nappa Leather	Neva Grey	Neva Grey	Biscaya Blue Nappa-Optic Upper with Rose Gold Stitching / Neva Grey MB-Tex Lower	Neva Grey	Neva Grey	69U Grey Microfiber Headliner
519	Edition One Neva Grey / Stratus Blue Iridescent-Effect Nappa Leather	Neva Grey	Neva Grey	Stratus Blue Nappa-Optic Upper with Rose Gold Stitching / Neva Grey MB-Tex Lower	Neva Grey	Neva Grey	69U Grey Microfiber Headliner



Trims



H39 + 697 - Natural Grain "Yacht-Design" Brown Walnut with Aluminum Lines Center Console and Door Trim

Only with MBUX Hyperscreen (DA0)



H08 + 775 - Natural Grain Anthracite Linden Wood Center Console and Door Trim

Only with MBUX Hyperscreen (DA0)



H12 + 798 - Natural Grain Brown Walnut Wood Center Console and Door Trim

Only with MBUX Hyperscreen (DA0)



51H + 331 - Backlit Laser-Cut Mercedes-Benz Star Pattern Dashboard Trim

Not available with MBUX Hyperscreen (DA0). Star pattern illumination matches ambient light color.



H67 - Anthracite 3D Relief-Optic Dashboard and Door Trim

Not available with MBUX Hyperscreen (DA0)



H39 - Natural Grain "Yacht-Design" Brown Walnut with Aluminum Lines Dashboard and Door Trim

Not available with MBUX Hyperscreen (DA0)



H08 - Natural Grain Anthracite Linden Wood Dashboard and Door Trim

Not available with MBUX Hyperscreen (DA0)



H12 - Natural Grain Brown Walnut Wood Dashboard and Door Trim

Not available with MBUX Hyperscreen (DA0)

<i>Code</i>	<i>Description</i>	<i>Availability</i>	<i>Price</i>
H39 + 697	Natural Grain "Yacht-Design" Brown Walnut with Aluminum Lines Center Console and Door Trim Only with MBUX Hyperscreen (DA0)	All Models	\$1,515
H08 + 775	Natural Grain Anthracite Linden Wood Center Console and Door Trim Only with MBUX Hyperscreen (DA0)	All Models	\$0
H12 + 798	Natural Grain Brown Walnut Wood Center Console and Door Trim Only with MBUX Hyperscreen (DA0)	All Models	\$0
51H + 331	Backlit Laser-Cut Mercedes-Benz Star Pattern Dashboard Trim Not available with MBUX Hyperscreen (DA0). Star pattern illumination matches ambient light color.	EQS450V	\$0
H67	Anthracite 3D Relief-Optic Dashboard and Door Trim Not available with MBUX Hyperscreen (DA0)	EQS450V	\$540
H39	Natural Grain "Yacht-Design" Brown Walnut with Aluminum Lines Dashboard and Door Trim Not available with MBUX Hyperscreen (DA0)	EQS450V	\$1,515
H08	Natural Grain Anthracite Linden Wood Dashboard and Door Trim Not available with MBUX Hyperscreen (DA0)	EQS450V	\$0
H12	Natural Grain Brown Walnut Wood Dashboard and Door Trim Not available with MBUX Hyperscreen (DA0)	EQS450V	\$0



Packages

Code	Packages	Availability	MSRP
DY0	<p>Premium Trim</p> <p>Includes all Standard Equipment. Highlights include:</p> <ul style="list-style-type: none"> 64-Color Ambient Lighting Heated and Ventilated Front Seats MBUX Augmented Reality for Navigation Power Tilt / Sliding Panorama Roof Burmester 3D Sound System with Sound Personalization and EV Sound 10-Degree Rear Axle Steering Keyless GO with Hands-Free Access and Seamless Door Handles Driver Assistance Package Parking Package with Surround View Camera DIGITAL LIGHT with Front + Rear Lightbands 	All Models	<p>\$102,310 (EQS450V)</p> <p>\$125,900 (EQS580V4)</p>
DY1	<p>Exclusive Trim</p> <p>Requires either Rapid Heating Front Seats (902) or AMG Line Interior Package (DG2).</p> <ul style="list-style-type: none"> Headrest Pillows on Front Seats 581 - Four-Zone Climate Control Includes all Premium Trim content HUD - Head-Up Display Choice Of: <ul style="list-style-type: none"> 445 - MBUX Augmented Reality Head-Up Display (Requires MBUX Hyperscreen) (\$2,000) 444 - Head-Up Display (\$1,100) PDD - Global Equipment Code Note - MSRP shown includes \$1,575 Package Price and sum of required standalone options included in Exclusive Trim. D&D Excluded. P21 - Air Balance Package (Currently Restricted) 399 - Multicontour Front Seats with Massage 	All Models	<p>\$105,785 (EQS450V)</p> <p>\$129,375 (EQS580V4)</p>
DY2	<p>Pinnacle Trim</p> <p>Requires Executive Rear Seat Package Code (PAS) or Executive Rear Seat Package Plus (DB6). Requires either Rapid Heating Front Seats (902) or AMG Line Interior Package (DG2).</p> <ul style="list-style-type: none"> P21 - Air Balance Package (Currently Restricted) 293 - Rear Side Airbags 223 - Power Rear Seats 898 - Wireless Charging Rear 399 - Multicontour Front Seats with Massage 437 - Comfort Rear Headrests HUD - Head-Up Display Choice Of: <ul style="list-style-type: none"> 445 - MBUX Augmented Reality Head-Up Display (Requires MBUX Hyperscreen) (\$2,000) 444 - Head-Up Display (\$1,100) 581 - Four-Zone Climate Control Note - All EQS trims, including Pinnacle Trim, are 5-seat configurations. Seat folds flat at a 60:40 split. Note - MSRP shown includes \$4,350 package price and sum of required standalone options included in Pinnacle Trim. D&D Excluded. 2x 100W USB-C Ports in Rear PDD - Global Equipment Code 402 - Heated and Ventilated Rear Seats 326 - Comfort Rear Center Armrest Includes all contents of Premium and Exclusive 	All Models	<p>\$108,560 (EQS450V)</p> <p>\$132,150 (EQS580V4)</p>
DA0 (Limited Availability)	<p>MBUX Hyperscreen Package</p> <p>Standard on EQS 580 4MATIC. MBUX Hyperscreen currently not orderable on the EQS 450+</p> <ul style="list-style-type: none"> 860 - 12.3" OLED Passenger Display PAG - MBUX Hyperscreen 535 - MBUX Multimedia System 	EQS450V	\$7,230
DG1	<p>AMG Line Exterior</p> <p>Standard on EQS 580 4MATIC</p> <ul style="list-style-type: none"> Chrome Rear Bumper Trim P31 - AMG Line Exterior Front Splitter in High-Gloss Chrome AMG Rear Bumper with High-Gloss Black Diffuser Insert AMG Front Bumper with A-Wing in High Gloss Black w/ Chrome Accents Side Skirts in High-Gloss Black with Chrome Accents Requires 21" AMG Wheels (RWX or RWY) 	EQS450V	\$2,200
DG2	<p>AMG Line Interior</p> <p>Requires AMG Line Exterior Package (DG1)</p> <ul style="list-style-type: none"> P29 - AMG Line Interior U26 - AMG Line Floor Mats 7U4 - AMG Line Sport Seat with Integrated Headrests and Ambient Lighting L5C - Multifunction Sport Steering Wheel with Flat Bottom AMG Brushed Stainless Steel Drive Pedals with Black Rubber Studs 	All Models	\$2,100
DB6	<p>Executive Rear Seat Package Plus</p> <p>Option only available with Pinnacle Trim (DY2). If ordering with Black upholstery (201, 211, 231, 801, 811), package requires Beltbag (306). Requires MBUX Interior Assistant Front (77B), MBUX Interior Assistant Rear (78B), and Adaptive Rear Compartment Lighting (236)</p> <ul style="list-style-type: none"> P43 - Rear Comfort Package 406 - Rear Multicontour Seats with Massage PAT - Executive Rear Seat Package Plus 903 - Rear Rapid Heating Seats 322 - Rear Neck and Shoulder Heating 447 - MBUX Tablet Note - EQS with Executive Rear Seat Package Plus is a 5-Seat Configuration. Seats fold flat at a 60:40 split. 	All Models	\$1,690
DB0	<p>Winter Package</p> <ul style="list-style-type: none"> Must have one of: 872 Heated Rear Seats (in standalone and included in package price) or 402 Heated and Ventilated Rear Seats (inside Pinnacle Trim DY2) 443 - Heated Steering Wheel 875 - Heated Windshield Washer System 597 - Heated Windshield 	All Models	\$1,580



Options

Factory Options

<i>Code</i>	<i>Options</i>	<i>Availability</i>	<i>MSRP</i>
B35 (Limited Availability)	Emergency-Use 110V Home Charging Cable Provides 2-4 miles per hour of charging time. Part can be ordered through Paragon if not equipped ex factory (Part A0005836204)		\$250
P53	Energizing Air Control Plus with HEPA Filtration		\$450
PBS (Limited Availability)	ENERGIZING COMFORT w/ Energizing Nature Requires one of: Heated Steering Wheel (443) or Winter Package (DB0). Only with Exclusive (DY1) or Pinnacle (DY2)		\$200
21U	Dashcam		\$200
399	Front Multicontour Seats with Massage Feature Standard on Exclusive (DY1) and Pinnacle (DY2). If ordering with Premium (DY0), option requires Rapid Heating Seats (902). Note: AMG Line Interior seats do not have Hot Stone functions or headrest pillows.		\$1,100
443	Heated Steering Wheel Included in Winter Package (DB0). IMPORTANT - EQS does not have a switch on the steering wheel for steering wheel heating. Steering wheel heating is controlled via MBUX, and can be programmed to turn on automatically with heated seat.		\$250
444	Head-Up Display Only with Exclusive (DY1) or Pinnacle (DY2).	All Models	\$1,100
445 (Delayed)	MBUX Augmented Reality Head-Up Display Delayed only on EQS450+. Only with MBUX Hyperscreen (DA0), and one of: Exclusive (DY1) or Pinnacle (DY2)		\$2,000
596	Laminated Safety Glass with Thermal and Noise Insulation Highly Recommended for Warm Markets		\$1,010
902	Rapid Heating Front Seats Standard on Exclusive (DY1) and Pinnacle (DY2). Requires Front Multicontour Seats (399). Not available with AMG Line Interior (DG2)		\$450
77B	MBUX Interior Assistant Front		\$350
P21 (Limited Availability)	Air Balance Package Required with Exclusive and Pinnacle	All Models	\$350
306	Beltbag® Rear Seatbelt Airbag Only with Executive Rear Seat Package Plus (DB6). Not with Macchiato Beige or Neva Grey Upholsteries.	All Models	\$500
878 (Limited Availability)	Active Ambient Lighting Not available for ordering - pricing added for transparency	All Models	\$590
561	Illuminated Seatbelt Buckles Required with 509 Upholstery	All Models	\$300
78B (New)	MBUX Interior Assistant Rear Requires Executive Rear Seat Package Plus (DB6)		\$350
236 (New)	Adaptive Rear Compartment Lighting Requires Executive Rear Seat Package Plus (DB6)		\$290



VPC Installed Options

<i>Code</i>	<i>Options</i>	<i>Availability</i>	<i>MSRP</i>
D07	Wheel Locking Bolts		\$150
D43	All-Season Floor Mats, Black Rubber 4-Pack Premium (DY0) or Exclusive (DY1) only		\$160
D53	All-Season Floor Mats, Black Rubber 4-Pack For vehicles with Pinnacle Trim (DY2) only		\$160
D10	Rear Lip Spoiler EQS is already equipped with a rear lip spoiler as standard equipment, D10 spoiler sits on top of factory spoiler and is larger/more pronounced.		\$500
D49	First Aid Kit		\$35



Specifications

EQS450V



Performance

Acceleration 0-60 mph 5.9 seconds

Top Speed 130 mph

Powertrain

Powertrain Rear Permanently Synchronous Electric Motor with 245 kW Output

Power 329 Horsepower

Torque 417 lb-ft of Torque

Drivetrain and Battery

Drive Configuration Rear Wheel Drive

Battery Size 107.8 kWh Lithium-Ion Battery

Suspension AIRMATIC Air Suspension

Number of High-Voltage Modules 12

Battery Cell Type Hard Case, 216 cells

AC Charging Capacity (240V) 9.6 kW

AC Charging Time (240V) 11.25 hours (10-100% SOC)

DC Fast Charging Capacity 200 kW

DC Fast Charging Time 31 minutes (10-80%)

Interior Dimensions

Cargo Capacity Behind Rear Seat 22 cu ft

Cargo Capacity Behind Front Seats 63 cu ft

Cargo Area Height 28.85 in

Cargo Area Length Behind Second Row 47.05 in

Maximum Headroom for Driver's Seat 40.35 in

Elbow Width in Front 61.57 in

Hip Room in Front 56.5 in

Shoulder Room in Front 59.48 in

Driver's Leg Room 41.7 in

Exterior Dimensions

Vehicle Length 207.28 in

Vehicle Width 75.82 in

Total Width (Incl. Mirrors) 83.66 in

Vehicle Height 59.57 in

Wheelbase 126.38 in

Turning Circle Diameter w/ 10-Degree Rear Axle Steering 10.9 m

Track Width Front 65.63 in

Track Width Rear 66.22 in

Curb Weight 5,597 lbs

Ground Clearance 5.28 in with suspension in Comfort, 4.88 in with suspension in SPORT, 6.25 in with suspension lifted to maximum height

Range

EPA-Certified Range 350 mi

City/Hwy MPGe 97 MPGe

Efficiency Figures 35 kW-hrs/100mi



Drivetrain and Battery

Drive Configuration	4MATIC All-Wheel Drive with Torque Vectoring
Battery Size	107.8 kWh Lithium-Ion Battery
Suspension	AIRMATIC Air Suspension
Number of High-Voltage Modules	12
Battery Cell Type	Hard Case, 216 cells
AC Charging Capacity (240V)	9.6 kW
AC Charging Time (240V)	11.25 hours (10-100% SOC)
DC Fast Charging Capacity	200 kW
DC Fast Charging Time	31 minutes (10-80%)

Powertrain

Powertrain	Dual Permanently Synchronous Electric Motors with 385 kW Total Output (One Motor on Each Axle)
Power	516 Horsepower
Torque	631 lb-ft of Torque

Performance

Acceleration 0-60 mph	4.1 seconds
Top Speed	130 mph

Range

EPA-Certified Range	340 mi
City/Hwy MPGe	91/98 MPGe
Efficiency Figures	36 kW-hrs/100mi

Exterior Dimensions

Vehicle Length	207.28 in
Vehicle Width	75.82 in
Total Width (Incl. Mirrors)	83.66 in
Vehicle Height	59.57 in
Wheelbase	126.38 in
Turning Circle Diameter w/ 10-Degree Rear Axle Steering	10.9 m
Track Width Front	65.63 in
Track Width Rear	66.22 in
Curb Weight	5,888 lbs
Ground Clearance	5.28 in with suspension in Comfort, 4.88 in with suspension in SPORT, 6.25 in with suspension lifted to maximum height

Interior Dimensions

Cargo Capacity Behind Rear Seat	22 cu ft
Cargo Capacity Behind Front Seats	63 cu ft
Cargo Area Height	28.85 in
Cargo Area Length Behind Second Row	47.05 in
Maximum Headroom for Driver's Seat	40.35 in
Elbow Width in Front	61.57 in
Hip Room in Front	56.5 in
Shoulder Room in Front	59.48 in
Driver's Leg Room	41.7 in



Options In Detail

DIGITAL LIGHT LED Headlamps

What features of DIGITAL LIGHT are available in the US Market?

DIGITAL LIGHT is our most advanced lighting system and is standard equipment on the EQS Sedan. Features that are specific to the US market are described below.

- **Curve Illumination w/ Cornering Light** - Headlamp illumination follows the curve of the road based on steering input. Cornering light illuminates at lower speeds, to help illuminate a turning area. With turn signal input, cornering lamp also illuminates the turning area in the indicated direction at lower speeds.
- **Adaptive Highbeam Assist** - Highbeam function automatically turns on and off based on ambient light and surrounding vehicles

Descriptions are in order of images on left.

- **Welcome Animation** - Animation of "Digital Rain" is projected when unlocking the vehicle with the key.
- **Blind Spot Assist Warning** - Animation of flashing triangle on the lane marking to indicate it is not safe to merge or change lanes. Warns in combination with Blind Spot Assist (audible alert)
- **Lane Keeping Assist Warning** - Animation of flashing triangle on the lane marking, warning that the vehicle is passing over a lane marking without a turn signal. Warns in combination with Lane Keeping Assist (steering wheel vibration, audible alert)
- **Lane Change Assist Indicator** - Illuminates the path the vehicle will follow when an automatic lane change is initiated. An automatic lane change is only possible with the driver assistance systems on and set to speed, and the driver initiates a lane change by tapping the turn signal in the desired direction
- **Pedestrian Warning** - Animation of flashing circles towards a detected pedestrian, highlighting their position close to or in the roadway.
- **Collision Warning** - Flashing animation to indicate that the driver is falling below the safety distance, warns in combination with Active Brake Assist (audible warning, autonomous braking if necessary)
- **Construction Warning** - Flashing animation of a construction excavator to warn the driver they are entering a construction zone



Energizing Air Control Plus with HEPA Air Filter (P53)

Breathe easy with purified, clean air in your EQS.

- Energizing Air Control Plus features a multi-filter air treatment process to ensure allergens, odor, air pollution, and bacteria & viruses are filtered out of the air of your EQS.
 - In the first stage, a coarse pre-filter frees the outside air from impurities such as coarse dust, leaves, etc.
 - Next, a HEPA Filter treats the air, creating air quality on the level of surgical rooms, filtering out 99.65% of allergens and fine dust.
 - An activated carbon layer in the HEPA system removes Nitrogen Oxides (NOx) and Sulfur Dioxide (SO2) from the air. It additionally neutralizes unpleasant odors.
 - Next, a final cabin filter with activated carbon layer traps remaining fine particles and neutralizes any additional odors.
- Sensor data monitors air quality both inside and outside your EQS. A live reading of the air quality is shown in the climate menu at the bottom of the central display.
- The EQS is the first manufacturer with an OFI Certified Filter for reduction of viruses and bacteria directly at the filter.



AMG Line Exterior vs. Mercedes-EQ Styling Comparison

	AMG Line Exterior (DG1)	Mercedes-EQ Styling
Front Bumper	AMG-specific front bumper with A-wing in high-gloss black and chrome trim, front splitter in high-gloss chrome and flics and fins on the left and right air intakes in high-gloss black with chrome trim	Single-strip chrome trim running across entire lower air intake, lower chrome trim
Side Skirts	Painted High-Gloss Black with door trim strips in chrome	Painted Graphite Grey Metallic with door trim strips in chrome. Important: side skirts are Graphite Grey with ALL paint choices
Rear Bumper	AMG-specific rear bumper with high-gloss black, diffuser-look insert in high-gloss black, double trim strips in chrome and flics on the left and right air outlets in black	Painted in vehicle color with lower part in graphite grey metallic and chrome trim elements
Wheels	21" AMG Wheels with High-Gloss Black Accents	20", 21" or 22" wheels



Comfort Seat vs. Sport Seat

- **Comfort Seat**
 - Available in Leather or Nappa Leather
 - Standard Equipment
 - Flowing Lines Stitching Pattern with Leather (2XX Upholsteries), Diamond Stitching Pattern with Nappa Leathers (5XX/8XX Upholsteries)
 - Includes contour ambient lighting
- **AMG Line Interior Seat (Sport Seat)**
 - Available in Leather only (2XX Upholstery)
 - Included with AMG Line Interior Package (DG2)
 - Single-Piece design with integrated headrest
 - Sportier side bolsters
 - Digital Rain Perforation Pattern
 - Includes contour ambient lighting

Image descriptions (in order): (1) Comfort Seat in Leather, (2) Comfort Seat in Nappa Leather, (3) Sport Seat in Leather



Gallery

