



Mercedes-Benz Museum – information

[Getting here](#)

[Opening hours and contact](#)

[Prices](#)

[Guided tours](#)

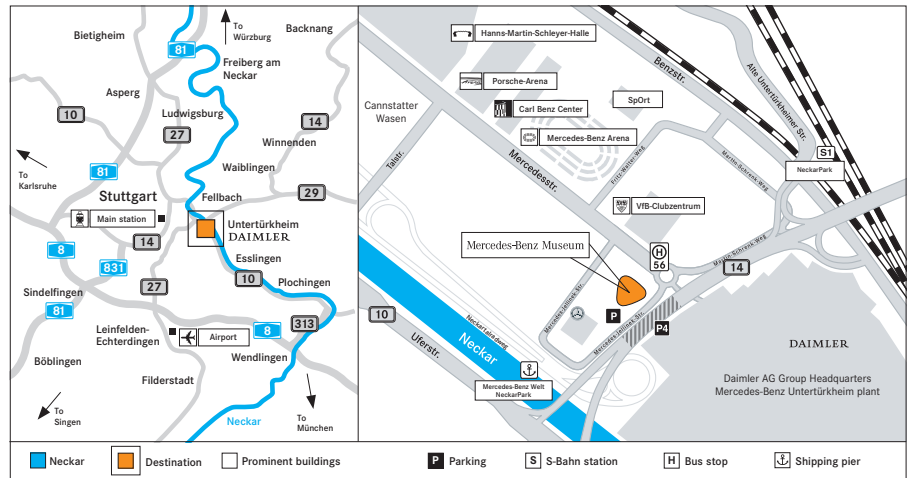
[Information for groups](#)

Subject to change. Latest version 01/2017.

Mercedes-Benz
The Best or nothing.



Mercedes-Benz Museum – getting here



Traffic guidance system

Please follow the “NeckarPark/Mercedes-Benz” traffic guidance system. The Mercedes-Benz Museum is only a stone’s throw away from the Mercedes-Benz Arena.

Getting here by car

From Karlsruhe: Take the A8 motorway to the Stuttgart intersection, take the Vaihingen exit. Merge onto the A831 motorway, then the B14 road towards Stuttgart-Zentrum (centre of Stuttgart) and merge onto the B10/B14. Follow the “Mercedes-Benz” signs.

From Ulm: Take the A8 motorway to the Esslingen-Zentrum (centre of Esslingen) exit. From there take the B313 road, then the B10 road towards Stuttgart. Follow the “Mercedes-Benz” signs.

From Heilbronn: Take the A81 motorway to the Zuffenhausen exit, then merge onto the B10 road towards Stuttgart-Zentrum (centre of Stuttgart) and follow the “NeckarPark” signs towards Stuttgart-Bad Cannstatt/Esslingen and then the “Mercedes-Benz” signs.

Classic cars

We extend a particular welcome to visitors arriving by classic car (no matter which brand). You are welcome to park your classic car on the hill in front of the main entrance of the Museum if there are no other events taking place. (If you would like to know whether the hill is free on your desired date, you can find out at the Mercedes-Benz Classic Contact Center: +49 711 17 30 000 or classic@daimler.com)

Parking

Parking facilities are provided in the Museum’s car park (maximum overhead clearance: 2 metres) or in the P4 multi-storey car park. Parking fees: 1 euro per hour for the first, second and third hour; 2 euros per hour from the fourth hour. Family and disabled parking bays are provided for our disabled visitors in the Museum car park. These can be found on level 0 close to the ticket machines and glass doors. Vehicles for disabled persons beyond a height of 2 metres are permitted to park on the hill in front of the main entrance of the Museum.

Please be aware of the ecological area around Stuttgart which requires so-called environmental tags.

Electric charging station

In the Museum multi-storey car park, there are six free-of-charge Type 2 electric charging stations available.

Events

During VfB Stuttgart’s football home matches and other major events access to the Mercedes-Benz Museum may be restricted. In such circumstances we recommend using public transport.

Getting here by train

From Stuttgart main station take the S-Bahn (rapid transit system) of line S1 in the direction of Kirchheim (Teck) to “NeckarPark”. On leaving the train, follow signs to the Museum. During the construction of “Stuttgart 21” there may be restrictions within the rapid transit system (S-Bahn). You can get further information at www.vvs.de

Getting here by bus

Bus line 56 connects Bad Cannstatt station with “Mercedes-Benz Welt”. Bad Cannstatt station is served by S-Bahn lines S1, S2 and S3 as well as by the regional rail network (Regionalbahn) and Regional-Express.

Getting here by bicycle

The Neckar valley cycle route passes right by the Museum. Leave the route at the shipping pier, “Mercedes-Benz Welt/NeckarPark” and follow the signs for “Mercedes-Benz Museum/NeckarPark”. Further information (only in German) at www.neckarradweg.de or www.neckartalradweg-bw.de

Getting here by boat

Boats stop regularly at the landing “Mercedes-Benz Welt/NeckarPark” (only during summer). Further information at www.neckar-kaeptn.de

Mercedes-Benz Museum – opening hours and contact

Opening hours

Tuesday to Sunday from 9 a.m. to 6 p.m. – ticket desk closes at 5 p.m.

Closed on Mondays. Please note our opening times on public holidays.

Restaurant

Tuesday to Sunday from 10 a.m. to 7 p.m., hot food up to 6 p.m.

Closed on Mondays.

Further information on our food offers at www.mercedes-benz.com/classic-restaurant

Cafébar

Tuesday to Sunday from 9 a.m. to 6 p.m.

Closed on Mondays.

Museum Shop

Tuesday to Sunday from 10 a.m. to 6 p.m.

Closed on Mondays.

Shop and stroll at any time – even without visiting the Museum before. If you make a purchase at the Museum Shop or if you are a guest at the restaurant please show us your ticket for the car park and we will give you free parking for the first hour in the Museum's car park.

Online shopping

You can shop online in comfort 24 hours a day at www.mercedes-benz.com/classic-shop

Open

Fri, 14 April 2017, Good Friday

Sun, 16 April 2017, Easter Sunday

Mon, 17 April 2017, Easter Monday

Mon, 1 May 2017, Labor Day

Thu, 25 May 2017, Ascension Day

Sun, 4 June 2017, Whit Sunday

Mon, 5 June 2017, Whit Monday

Thu, 15 June 2017, Feast of Corpus Christi

Tues, 3 October 2017, German Unification Day

Wed, 1 November 2017, All Saints' Day

Wed, 22 November 2017, Penance Day*

Tues, 26 December 2017, 2. Christmas Day

*no bank holiday in Baden-Württemberg

Closed

Sun, 24 December 2017, Christmas Eve

Mon, 25 December 2017, 1. Christmas Day

Son, 31 December 2017, New Year's Eve

Please note that the Museum is closed on Mondays.

Please note

When visiting the exhibition, children under the age of 14 must be accompanied by an adult.

Dogs (except for certified assistance and therapy dogs) are not allowed in the exhibition rooms and the entrance area.

Barrier-free museum

There are special parking spaces available in the Museum's multi-storey car park for families and visitors with restricted mobility. The Mercedes-Benz Museum combines its easy-access exhibition with unique architecture. Numerous lifts serve all floors. Wheelchairs, walking frames and pushchairs are available for use if required.

Classic cars with Mercedes three-pointed star

Under the name ALL TIME STARS, the Mercedes-Benz Museum conducts trade with the brand's youngtimers and oldtimers. Everything on offer can be found on the website www.alltime-stars.com. The vehicles can also be visited and purchased directly at the Mercedes-Benz Museum. Opening times: Mondays by appointment. Tuesdays to Sundays from 9 a.m. to 6 p.m. No sales or consultation on Sundays.

Contact and reservations

Mercedes-Benz Classic Contact Center

Phone: +49 711-17 30 000

Fax: +49 711-17 30 400

E-mail: classic@daimler.com

Address

Mercedes-Benz Museum
Mercedesstraße 100
70372 Stuttgart, Germany

Further information online at

www.mercedes-benz.com/museum

Follow us on social media

 facebook.com/mercedesbenzmuseum

 @mb_museum

 @mercedesbenzmuseum

 google.com/+mercedesbenzmuseum

 youtube.com/mercedesbenzmuseum

Information on the Mercedes-Benz Museum while on the go on your smartphone:



Mercedes-Benz Museum – prices

Category	in euros	Visitors
Day ticket	10.00	Adults
Day ticket reduced*	5.00	Juveniles (from the age of 15 up to and including the age of 17) · students (from the age of 15) · apprentices · university students · all those over the age of 60 · unemployed persons · asylum-seekers (from the age of 18) · 1 accompanying person per Mercedes-Benz ClubCard holder
	2,50	Asylum-seekers (from the age of 15 up to and including the age of 17)
Day ticket complimentary*	0.00	Children: (up to and including the age of 14) · registered groups of schoolchildren (primary and secondary school) and student groups including accompanying persons (for every 5 schoolchildren/students, 1 accompanying person is free) following registration of the school or university · bus drivers and tour guides accompanying registered groups on the day of the visit · severely disabled visitors · disabled visitors with handicapped ID · Mercedes-Benz ClubCard holders · Museum Pass holders · employees of the Daimler AG · members of ICOM and German Museum Association · journalists · birthday boys/girls on their birthdays
Evening ticket (from 4.30 p.m. to 6 p.m. Ticket desk closes at 5 p.m.)	5.00	See day ticket
Evening ticket reduced (from 4.30 p.m. to 6 p.m. Ticket desk closes at 5 p.m.)	2.50	See day ticket reduced
Groups Groups with more than 10 visitors (regular or reduced)	9.00	See day ticket
Groups reduced Groups with more than 10 visitors	4.00	See day ticket reduced
Groups Groups with more than 50 visitors (regular or reduced)	8.00	See day ticket
Groups reduced Groups with more than 50 visitors	4.00	See day ticket reduced
One-year ticket	40.00	See day ticket
One-year ticket reduced	20.00	See day ticket reduced
Museum pass available from	98.00	Entitles one adult to entry in around 320 museums, castles and gardens in Germany, France and Switzerland. From the first visit to a museum, the card is valid for a year. Up to 5 people under the age of 18 can accompany the holder free of charge. More information can be found via the Mercedes-Benz Classic Contact Center or on www.museumspass.com
Museum pass, reduced*	92.00	See Museum pass. The reduced price applies for students, trainees, the unemployed, the disabled, teachers and members of associations of friends of museums. Up to five people under the age of 18 can accompany the holder free of charge.
Open Museum tours	5.00	Booking via the Mercedes-Benz Classic Contact Center, at the ticket desk or online (plus admission)
Open architecture tour	5.00	See open Museum tours
Individual group tours (including various special themes such as, for example, architecture or children's tours)	80.00	Booking for groups of up to 20 persons per guide via the Mercedes-Benz Classic Contact Center (plus admission)
Individual group tours outside of regular opening hours	250.00	Booking for groups of up to 25 persons per guide via the Mercedes-Benz Classic Contact Center (plus admission)
Simulator	4.00	All museum visitors over 140 cm; tickets available at the simulator desk inside the exhibition. Payment in cash on location in Legend Room 7.

Subject to change.

*Any reductions only on presentation of a valid identification card or proof of eligibility. Multiple reductions are not possible.

Mercedes-Benz Museum – guided tours

Museum tour

Discover 160 vehicle exhibits as well as a wealth of automotive accessories. Get an overview of the fascinating history of the automobile at Mercedes-Benz. The chronological tour through the Legend rooms will take you from the dawn of automotive history in 1886 through to the present day. The Museum also houses epoch-bridging exhibits set out in 5 thematic Collection rooms.

Open Museum tours

(according to availability)

Tuesday to Sunday, 2.30 p.m. (in German)

Tuesday to Sunday, 11 a.m. (in English)

Duration: Approx. 75 minutes

Tickets: Available at the ticket desk/

4 euros plus admission fee

Booking via Online-Ticketing at

www.benz.me/tickets or via the

Mercedes-Benz Classic Contact Center

Individual group tours

(up to 20 participants per guide)

Booking via the Mercedes-Benz

Classic Contact Center

Price: 80 euros per group

(plus individual entry fees)

Individual group tours outside of regular opening hours

(up to 25 participants per guide)

Booking via the Mercedes-Benz

Classic Contact Center

Price: 250 euros per group

(plus individual entry fees)

Individual tours to your taste

Experience a unique tour with a core theme of your choice. No matter whether it's architecture, cars or history – here, you will learn about exactly the things that interest you. Booking via the Mercedes-Benz Classic Contact Center

Open architecture tour

(according to availability)

Fridays, 4 p.m. (in German)

Duration: Approx. 75 minutes

Tickets: Available at the ticket desk/

4 euros plus admission fee

Booking via Online-Ticketing at

www.benz.me/tickets or via the

Mercedes-Benz Classic Contact Center

Architecture tour for groups

(up to 20 participants per guide)

Booking via the Mercedes-Benz

Classic Contact Center

Price: 80 euros per group

(plus individual entry fees)

Electronic Audio Guide

For visitors who would like to explore the museum without a personal guide, there are electronic guides in eight languages available. There is a special profile for children as well.

Hands-On Exhibition

The Hands-On Exhibition will fill families with enthusiasm for the topic of design. Children and young people have the opportunity to realise their own designs: here they can sketch, model and shape their individual car of the future. The free workshop takes place at the weekend on Saturdays and Sundays in the children's area. More information can be found on www.mercedes-benz.com/museum or at the Mercedes-Benz Classic Contact Center. You can register directly on site.

It may be necessary to wait.

Plant tour Sindelfingen

To join the plant tours in our Sindelfingen plant please contact the plant tour office at werkbesichtigungen.w050@daimler.com

Contact and reservations

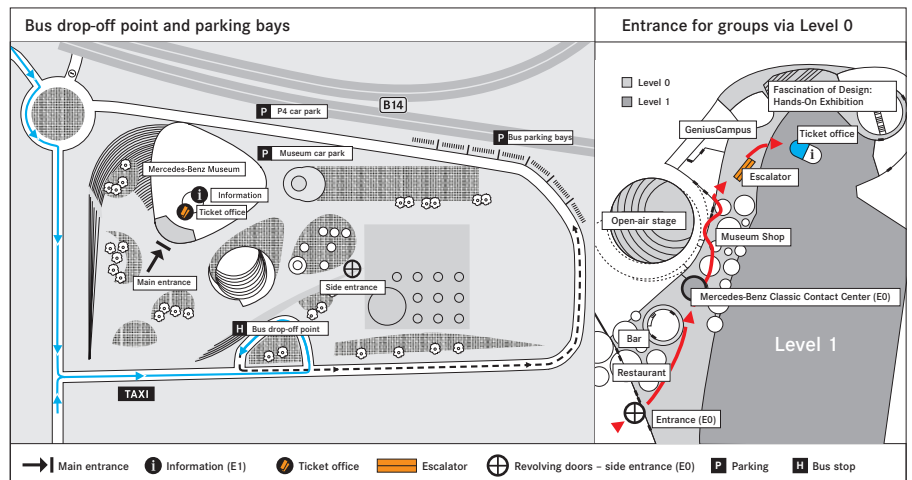
Mercedes-Benz Classic Contact Center

Phone: +49 711-17 30 000

Fax: +49 711-17 30 400

E-mail: classic@daimler.com

Mercedes-Benz Museum – information for groups



Individual advice and tailor-made offers

Create a visit tailored to your special requirements. Why not combine your museum visit with an expert guided tour, a pit stop in the restaurant and a personal souvenir from the Museum Shop? Employees at the Mercedes-Benz Classic Contact Center will be pleased to help you plan your visit.

Pricing

Groups with more than 10 paying visitors get a discount on their entrance. By purchasing more than 50 tickets you will receive a further price reduction. For more information about reductions, please contact the Mercedes-Benz Classic Contact Center or the ticket office in the entrance area.

Free on-site bus parking

On arrival at the Mercedes-Benz Museum you will have access to several free on-site bus parking bays (see map above). Please pay heed to the street signs on location, too. Groups arriving by bus can also be dropped off at the Museum's on-site turning loop.

Reduced waiting times

Groups are also given priority at admission. To reduce waiting times, a separate admission counter is available for registered groups visiting the Museum.

Service for bus drivers/tour guides

As a bus driver or tour guide accompanying registered groups, you can enjoy free admission on the day of the visit. The driver is also entitled to a free snack at the restaurant. Admission ticket and food vouchers are available at the ticket office in the entrance area. Please have your bus driving licence and the confirmation of your group visit handy when you register at the ticket office in the Mercedes-Benz Museum.

For questions and reservations, please contact the Mercedes-Benz Classic Contact Center. We will be happy to advise you personally.

Contact and reservations

Mercedes-Benz Classic Contact Center
Phone: +49 711-17 30 000
Fax: +49 711-17 30 400
E-mail: classic@daimler.com

Address

Mercedes-Benz Museum
Mercedesstraße 100
70372 Stuttgart, Germany

Further information online at

www.mercedes-benz.com/museum