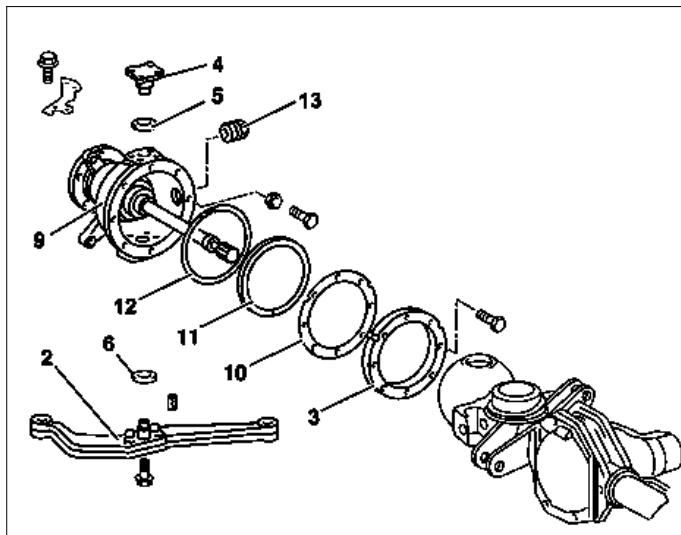


Model 460, 461, 463
When using split gasket

Modification notes

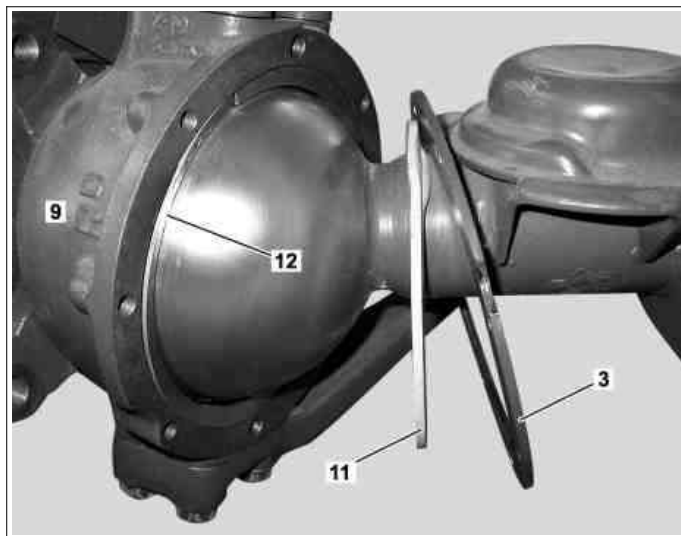
29.6.15	Multipurpose grease		BF33.20-P-1001-02A
27.7.15	Value changed: multipurpose grease	BF33.20-P-1001-02A	

- 3 Seal retainer
- 9 Joint housing
- 10 Paper gasket
- 11 Seal
- 12 Metal ring
- 13 Screw plug



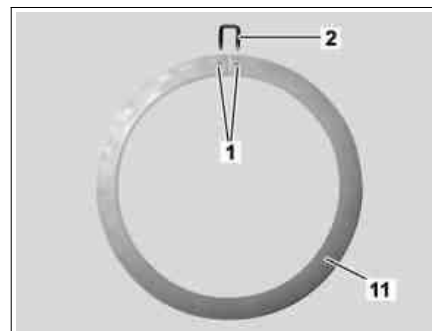
P33.25-2025-11

- 3 Seal retainer
- 9 Joint housing
- 11 Seal
- 12 Metal ring



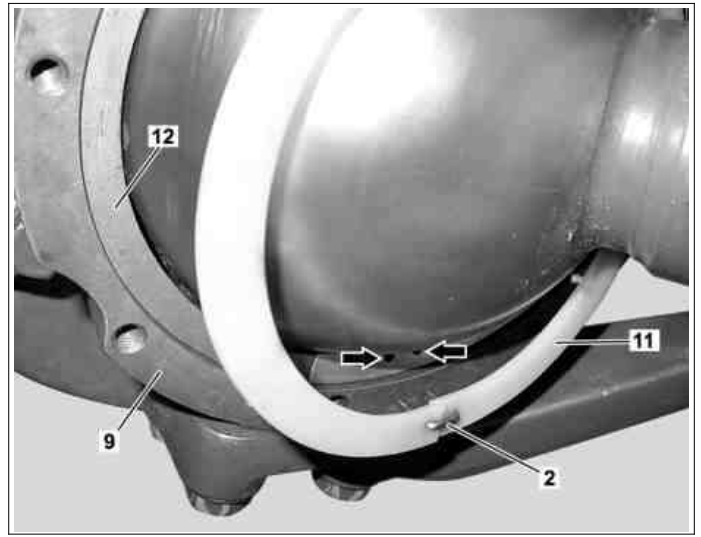
P33.20-2217-11

- 1 Holes
- 2 Clamp
- 11 Seal



P33.20-2218-01

- 2 Clamp
- 9 Joint housing
- 11 Seal
- 12 Metal ring



P33.20-2219-11

☒	Remove		
⚠ Danger !	Risk of death caused by vehicle slipping or toppling off of the lifting platform.	Align vehicle between vehicle lift columns and position the four support plates at the vehicle lift support points specified by the vehicle manufacturer.	AS00.00-Z-0010-01A
1	Raise vehicle		AR00.60-P-1000G
2	Remove front wheels		AP40.10-P-4050G
AP			
3	Measure stop screw for wheel angle, note down dimension and remove stop screw		
4	Mark position of seal retainer (3) relative to joint housing (9)		
5	Detach seal retainer (3)		
6	Mark installation position of seal (11) and cut through seal (11)		
7	Remove seal (11)		
☒	Install		
8	Make holes (1) for clamp (2) in seal (11)	If not yet fitted.	
9	Install seal (11)	i When doing so, make sure that the seal (11) is installed at the correct position.	
10	Insert clamp (2) through holes (1) of seal (11) and into holes (arrows) on metal ring (12)		
11	Align seal retainer (3) with mark on joint housing (9)		
12	Screw in stop screw for wheel angle corresponding to measured value		
13	Mount seal retainer (3) on joint housing (9); when doing so, carefully push seal (11) into position	i The paper gasket (10) must always be replaced. Nm Bolt, seal retainer to joint housing	*BA33.20-P-1008-01C
14	Remove screw plug (13)		
15	Pack joint housing (9) with multipurpose grease	☒ Multipurpose grease	*BF33.20-P-1001-02A
16	Screw in screw plug (13) tightly	Nm Joint housing screw plug	*BA33.20-P-1001-01C
17	Fit front wheels		AP40.10-P-4050G
AP			
⚠ Danger !	Risk of death caused by vehicle slipping or toppling off of the lifting platform.	Align vehicle between vehicle lift columns and position the four support plates at the vehicle lift support points specified by the vehicle manufacturer.	AS00.00-Z-0010-01A
18	Lower vehicle		AR00.60-P-1000G

Nm Wheel control, hub

Number	Designation	Model 460, 461, 463
BA33.20-P-1001-01C	Joint housing screw plug	Nm 100

 Wheel control, hub

Number	Designation	Model 460, 461, 463
BA33.20-P-1008-01C	Bolt, seal retainer to joint housing Nm	25

 Joint housing

Number	Designation	Model 460, 461, 463
BF33.20-P-1001-02A	Multipurpose grease	250
	Filling capacity g Sheet	BB00.40-P-0267-01 A