



DTB

Date: November 5, 2008
 Order No.: S-B-91.10/112e
 Supersedes: S-B-91.10/112d dated October 21, 2008
 Group: 91

Revision History

Revision	Date	Purpose
e	11/5//08	Technical Content Updated (Condition VIII Added)
d	10/21/08	Added VIN range for 204 issue
c	10/6/08	Technical Content Updated (Condition VII Added)
b	9/4/08	Damage Code Revised (Condition 1)
a	5/29/08	Technical Content Updated
-	8/9/06	Initial Issues
	7/13/06	

SUBJECT: Model 164.122/172/175/177/186/822/886

Model

203.040/052/054/056/061/064/065/076/081/084/087/092/261/264/281/284/740/747/764

Model 204.054/056/081 up to VIN A184623, F198707, R058616

Model 209.356/365/372/375/376/377/456/465/472/475/476/477

Model 211.026/056/065/070/076/082/083/087/256/265/276/282/283/287

Model 219.375/376

Model 251.122/156/165/175/177

Front Seat Noise Complaints

If you receive customer reports in the above model vehicles regarding noises from the front seats, check if the noise fits any of the descriptions listed below and if yes, proceed as described.

- I. Noise when the load on the backrest frame changes (Models 203, 209, 211, 219)
 - a. Noise from the lumbar support in the backrest especially during cold temperatures
 - b. Padding support grid rubs on the attachment points on the backrest frame (vehicles produced up to 09/2005)
 - c. Relative movements can produce noise at bottom of backrest (CL203/209)
 - d. Noise from backrest under load due to the incorrect positioning of the circlip (Model 211, 219)
 - e. Grunting and/or ripping noise from rear backrest.

This bulletin has been created and maintained in accordance with MBUSA-SLP S423QH001, Document and Data Control, and MBUSA-SLP S424HH001, Control of Quality Records.

- II. Noise between the seat frame brackets and seat cushion frame (Models 203, 211, 219)
- III. Noise from lower trim cover (Models 211 and 219 only)
- IV. Noise between seat cover and cover of sidebag (Models 211 and 219 only)
- V. Rubbing noise between seat cushion and trim cover (Model 211 with sport package only)
- VI. Noise from CAK module in head restraint (Models 203, 211, 219, 221 produced up to calendar week 41 in 2006)
- VII. Noise from either front seat backrest. (Model 204 up to A184623, F198707, or R058616)
- VIII. Noise during manual lumbar support adjustment (Model 164, 251)

I. Noise When Load on Backrest Frame Changes (Model 203, 209, 211, 219)

i **Note:** Also perform if work is being performed on any of the following:

- Backrest frame (91A41 or 91N41)
- Backrest cover (91A15, 91N15) or
- Head restraint guide rail (91A33, 91N33)

These actions must always be performed if the backrest frame is exposed to avoid follow-up repairs.

i **Note:** Even if just one of the conditions exists, you should always implement the other measures (i.e. measures a, b, c, and d) regardless of whether or not the customer complains of these.

a. Noise from Lumbar Support in Backrest during Cold Temperatures

1. Verify noise during cold temperatures.
2. Remove backrest cover. Refer to WIS document AR91.10-P-1910P (203, 209), AR91.10-P-1910T (211 up to MY05), AR91.10-P-1910TB (211 as of MY05) and AR91.10-P-1910TX (219).
3. Check if the guide wires are damaged (Figure 1) at the interface with the lumbar support basket.

i **Note:** Figure 2 shows the seat backrest frame with the seat cover and seat pad removed for clarity, it is not necessary to remove these parts to inspect and lubricate the guide wires.



Figure 1 S-B-91.10/112a

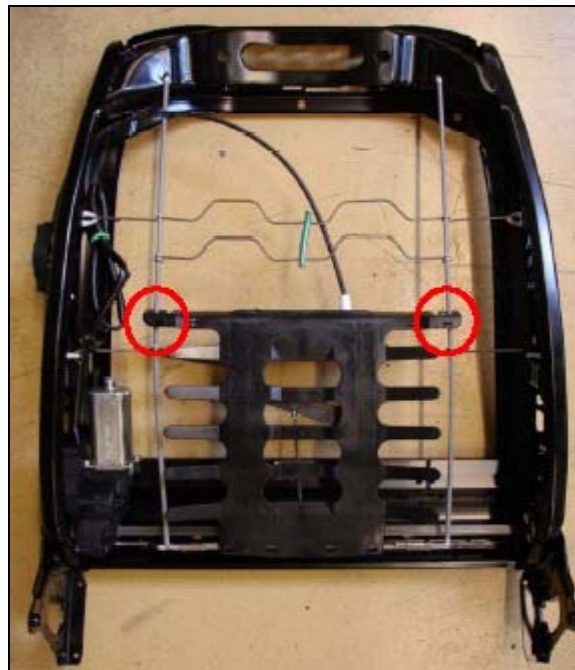


Figure 2 S-B-91.10/112a

4. If there is minor damage to the guide wires, apply lubrication (A000 989 36 60) to the guide wires.
5. In the case of major damage to the guide wires (Figure 3), sand down the guide wires of the padding

support grid, wrap felt tape (A001 983 51 10) around them and apply lubricant (A000 989 36 60).



Figure 3 S-B-91.10/112a

b. Padding Support Grid Rubs on Attachment Points on Backrest Frame (Models 164, 203, 209, 211, 219 and 251 produced up to 09/2005)

1. With backrest cover still removed, remove side bag.
2. Disconnect padding support grid from the four suspension points (Figure 4), two on the right side and two on the left side.
3. Cut four pieces of felt, approximate size is 25 mm by 2 mm. Apply lubrication (A000 989 36 60) to the felt and then adhere the felt to the suspension points of the padding support grid (Figure 5).
4. Reconnect the padding support grid to the four suspension points (two on the right and two on the left).

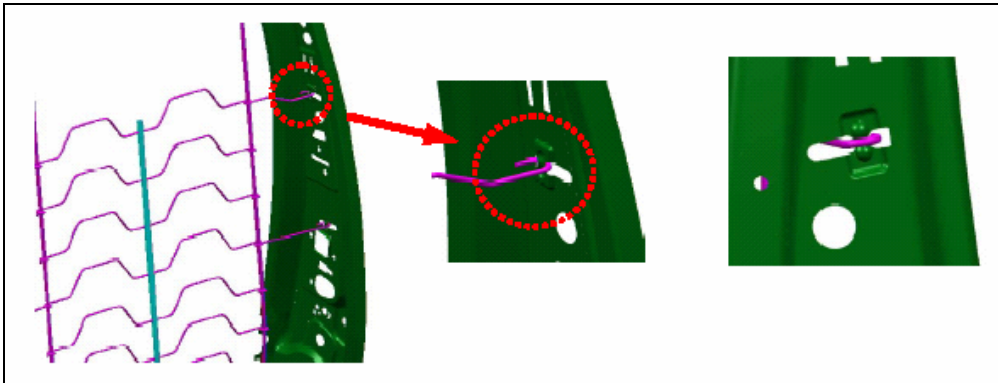


Figure 4

S-B-91.10/112a



Figure 5

S-B-91.10/112a

c. Relative Movements Produce Noise at Bottom of Backrest (Models 203.740/747/764 only & 209.356/365/372/375/376/377/456/465/472/475/476/477)

1. Backrest cover is still removed and the seat is in installed position.
2. Detach seat cover and spray the rivets (Figures 6 and 7) in area between side section of frame and cross member with grease (A002 989 06 51).



Figure 6

S-B-91.12/112a



Figure 7

S-B-91.12/112a

d. Noise from Backrest Under Load Due to Incorrect Positioning of Circlip (Models 211, 219 only)

1. Check if the alignment of the circlip on the head restraint guide sleeve is correct (refer to Figure 8).
2. Reattach the seat cover and backrest cover then check that the noise does not occur again.

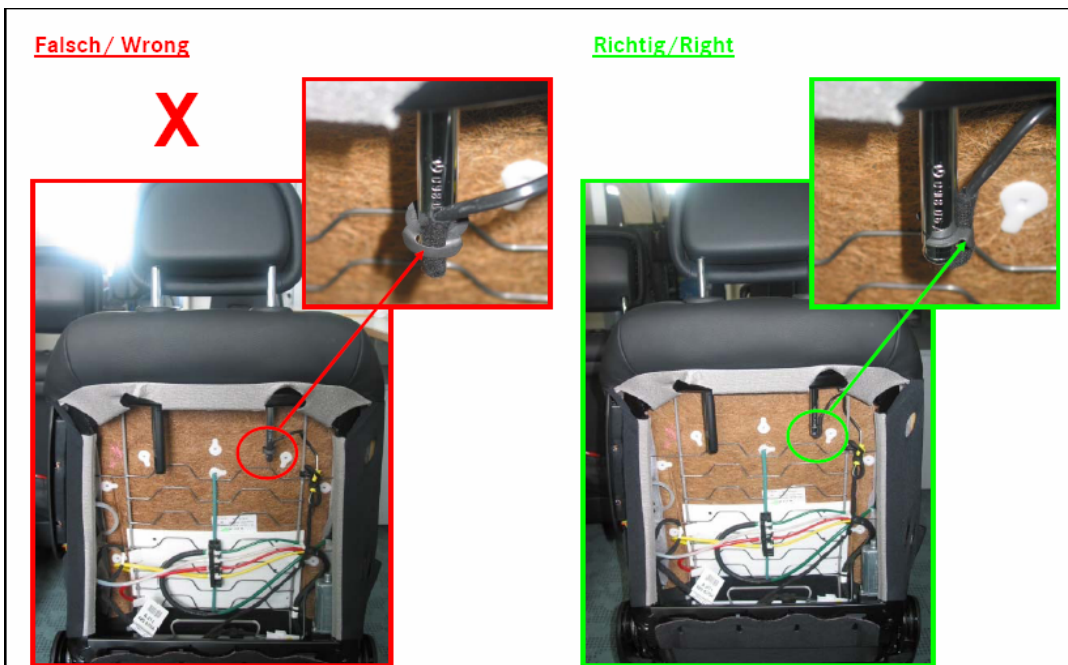


Figure 8

S-B-91.10/112a

e. **Noise from Seat Backrest (Models 203, 209 and 219)** – Apply felt (A126 782 01 97) to seat back lining bracket so the bracket does not rub against the backrest frame. Refer to Figure 9 (inside backrest frame) and Figure 10 (backrest frame)



Figure 9 – Felt 6 x 2.5cm

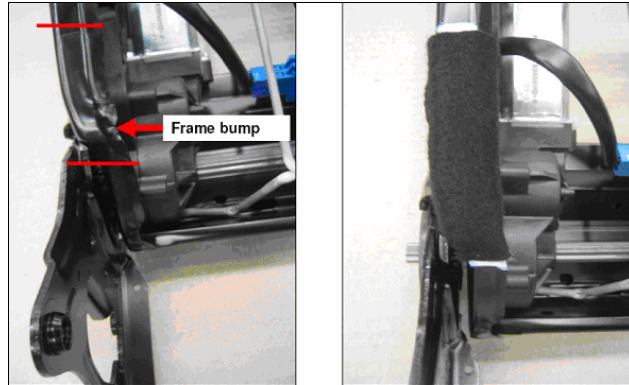


Figure 10 – Felt 8.0 x 2.5 cm

II. Noise Between Seat Frame Brackets and Seat Cushion Frame – Model 203 (up to VIN A903977, F817832 and R230819), Model 211 (up to VIN A967489 and X207037) and Model 219 (up to VIN A075885)

i **Note:** Also perform the action if you are performing work on the seat adjuster (91030, 91A27, 91N27) When the brackets are exposed during the work, the remedial action must be performed depending on the VIN range to prevent follow-up repairs.

The seat frame brackets rub on the seat cushion frame and if there are burrs on the brackets, this may make noise.

1. If burrs are visible (Figure 11, circles), proceed as follows.
2. Remove the seat, refer to WIS document AR91.10-P-1000P (203), AR91.10-P-1000T (211) or AR91.10-P-1000TX (219).
3. Remove the brackets and replace with new brackets.

i **Note:** Always install new micro-encapsulated bolts.

4. Reinstall the seat, refer to WIS document AR91.10-P-1000P (203), AR91.10-P-1000T (211) or AR91.10-P-1000TX (219).

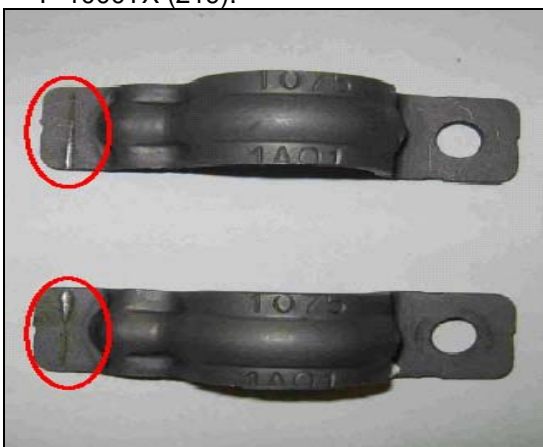


Figure 11

S-B-91.10/112a

III. Noise from Lower Trim Cover (Models 211 and 219 only) – The rib on the back side of the lower trim covers at the front of the seat cushion may cause a noise as it rubs on the seat cover.

1. Remove trim cover (Figure 12). Refer to WIS Document AR91.10-P-1200T.
2. Line side of trim cover rib (Figure 13) with felt (A001 983 51 10).
3. Reinstall trim cover (Figure 12). Refer to WIS Document AR91.10-P-1200T.
4. Confirm that the noise is no longer present

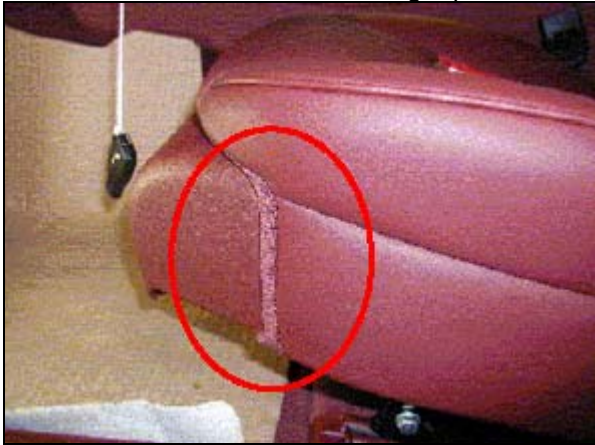


Figure 12

S-B-91.10/112a

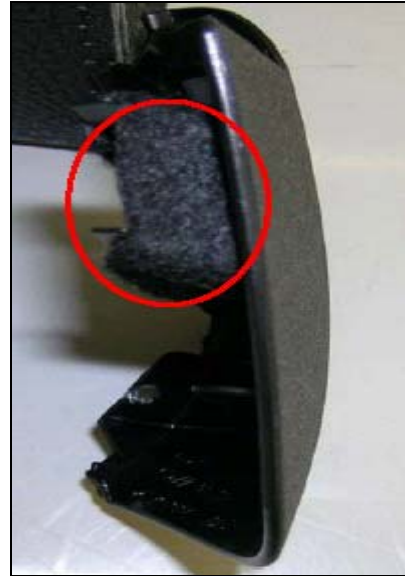


Figure 13

S-B-91.10/112a

IV. Noise Between Seat Cover and Cover of Sidebag (Models 211 and 219 only) – The hard edge of the sidebag cover may make a noise as it rubs against the seat cover.

1. Remove side airbag.
2. Apply special sliding compound (A000 989 36 60) from the inside on the cover of the side airbag close to the graining (Figure 14)
3. Confirm that the noise is no longer present

V. Rubbing Noise Between Seat Cushion and Trim Cover (Model 211 with sport package only) –

Rubbing noise where the seat cover contacts the trim cover (Figure 15, arrows)

1. Tilt the backrest rearward.
2. Apply special sliding compound (A000 989 36 60) to the inside of the trim cover (Figure 15, arrows).
3. Confirm that the noise is no longer present.

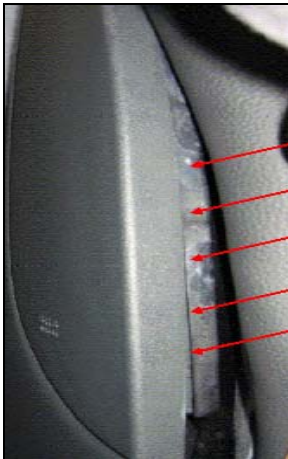


Figure 14 S-B-91.10/112a

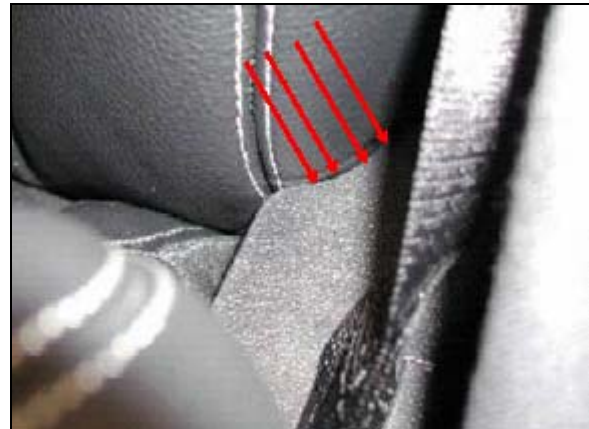


Figure 15

S-B-91.10/112a

VI. Noise from CAK Module in Head Restraint (Models 203, 211, 219, 221 produced up to calendar week 41/06) - For vehicles produced before calendar week 41/6 and/or continuing complaints from the head restraint, replace the head restraint but not the guide sleeves (Figure 16).

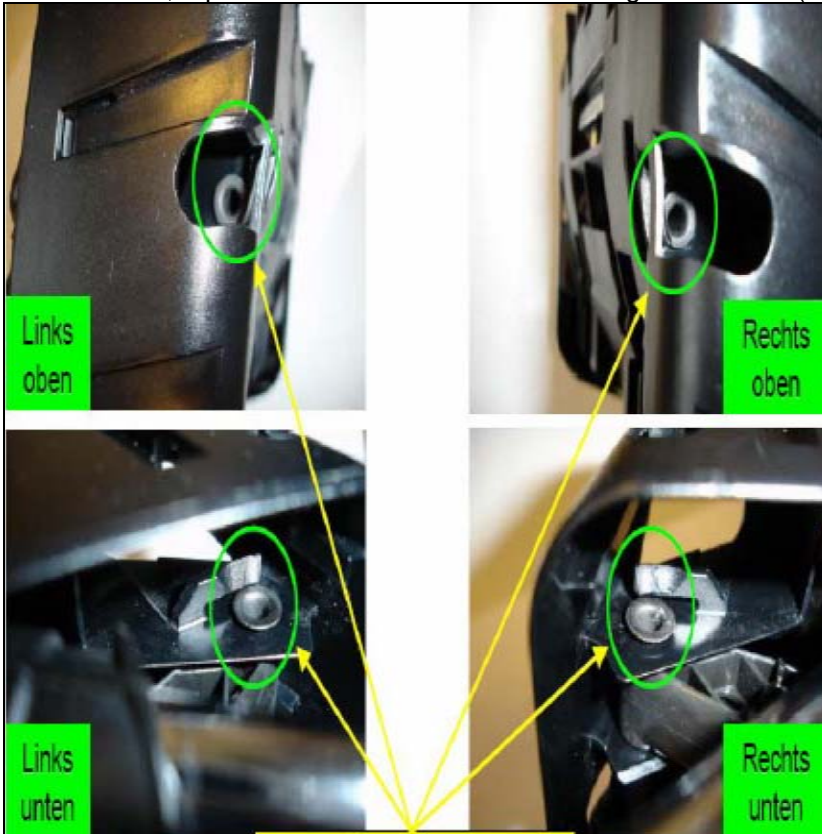


Figure 16

S-B-91.10/112a

VII. Noise from Right or Left Front Seat Backrest (Model 204 up to VIN A184623 / F198707 / R058616, excludes AMG Models)

1. Install new padding with colored anti-creak coating. Refer to WIS document AR91.18-p-1820cw.
2. Remove fleece bag shown in Figure 17. Refer to WIS document AR91.18-p-1820cw. Do not reinstall fleece bag.



Figure 17

S-B-91.10/112c

VIII. Noise during manual lumbar support adjustment (Model 164, 251) – The Bowden cable of the manually adjustable lumbar support may rub against the spring core of the backrest.

1. Remove seat-back lining Refer to WIS document AR91.10-P-1915GZ (164) and AR91.10-P-1915RT (251).
2. With a load on the backrest (e.g. a person sitting in the seat), adjust the manual lumbar support and determine the points at which the Bowden cable rubs against the spring core (possible locations illustrated in Figure 18).
3. Apply felt tape to the areas on the spring core that are rubbing on the Bowden cable.
4. Confirm that the noise is no longer present.

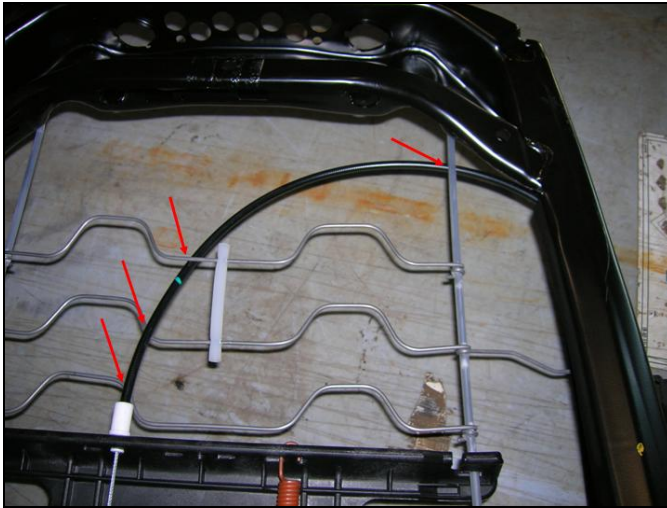


Figure 18 S-B-91.10/112e

Parts Information

Qty.	Part Name	Part Number
1	Lubrication	A000 989 36 60 ¹
1	Felt tape	A001 983 23 10 ²
2	Bracket	A000 914 01 29
2	Microencapsulated bolt	N000000 004180
1	Flexible Shaft	A171 820 02 41
1	Noise Kit	A000 580 03 50
1	Felt (good for one seat)	A126 782 01 97
1	Left seat back padding (without Code 244) (Model 204)	A204 910 01 16
1	Left seat back padding (with multi contour seat- option code 409) (Model 204)	A204 910 07 16
1	Left seat back padding (with sport seat- option code 244) (Model 204)	A204 910 03 16
1	Right seat padding (standard) (Model 204)	A204 910 14 16
1	Right seat padding (With multi contour seat- option code 409) (Model 204)	A204 910 08 16
1	Right seat padding (With sport seat- option code 244) (Model 204)	A204 910 04 16

¹ Sufficient for 20 repairs, Submit as Local Purchase – LUB00217, Qty 1, handling is included

² Sufficient for 20 repairs, Submit as Local Purchase – FEL00060, Qty 1, handling is included

i Note: The following allowable labor operations should be used when submitting a warranty claim for this repair. This information has been generated on November 5, 2008. Please refer to Netstar → Star TekInfo → Star Time for the most current labor time allowance.

In Case of Warranty

Operation: Seat backrest frame – for driver seat, replace (backrest cover removed) (91-5755)
 Seat backrest frame – for front pass. seat, replace (backrest cover removed) (91-5760)
 Driver seat, R&R (91-3512)
 Passenger seat, R&R (91-3602)
 Seat backrest frame – for driver’s seat, replace (seat removed) (91-5754)
 Seat backrest frame – for front pass. seat, replace (seat removed) (91-5759)
 Front seat noise (P-B-91.10/112 – Condition I a-e), eliminate (91-0000)
 Noise between brackets and frame (P-B-91.10/112 – Condition II), eliminate (91-0000)
 Noise from lower trim cover (P-B-91.10/112 – Condition III), eliminate (91-0000)
 Noise between seat cover and sidebag (P-B-91.10/112 – Condition IV), eliminate (91-0000)
 Noise between cushion and trim cover (P-B-91.10/112 – Condition V), eliminate (91-0000)
 Head restraint on driver’s seat R&R (91-2587)
 Head restraint on passenger seat R&R (91-2592)
 Upholstered cover for driver’s seat backrest, remove/install (91-8659)
 Upholstered cover for front – passenger seat backrest, remove/install (91-8759)
 In addition to: cover with upholstery for seat backrest on front passenger seat,
 remove/install vehicle with manual lumbar support adjustment (91-8787)
 Seat backrest rear covering – front pass. seat, R&R/replace (91-5852)
 Seat backrest rear covering – on driver seat, R&R/replace (91-5832)
 Bowden cable modification (91-0000)

Damage Code	Operation Number	Time (hrs.)	Model Indicator (s)
Condition I: 91013 36 (Models 164, 211, 219, 251)	91 5755	0.6 hrs.	P1, P2, P3, P4, P6, P7, P8, P9, Q2, Q3, Q5, Q6, Q7, Q8, Q9, QA
		1.1 hrs.	P5, Q1, Q4
	OR 91A41 36 (left frame) 91N41 36 (right frame) (Models 203 & 209)	1.2 hrs.	T1, T2, T3, T4, T5, T6, T7, T8, U1, U3, U4, U5, U6, U7
		1.4 hrs.	EB, EC, Z1, Z2, Z3, Z4, Z5
	91 5760	0.6 hrs.	P1, P2, P3, P4, P6, P7, P8, P9, Q2, Q3, Q5, Q6, Q7, Q8, Q9, QA
		1.1 hrs.	P5, Q1, Q4
		1.3 hrs.	T1, T2, T3, T4, T5, T6, T7, T8, U1, U3, U4, U5, U6, U7
		1.4 hrs.	EB, EC, Z1, Z2, Z3, Z4, Z5
		0.7 hrs.	Y1, Y2
	91 3602	0.7 hrs.	Y1, Y2
	91 5754	0.9 hrs.	Y1, Y2
	91 5759	0.9 hrs.	Y1, Y2
	91 0000	0.0 hrs. *	EB, EC, P1, P2, P3, P4, P5, P6, P7, P8, P9, Q1, Q2, Q3, Q4, Q5, Q6, Q7, Q8, Q9, QA, S1, S2, S3, S4, S5, S6, S7, S8, S9, SA, SB, SC, T1, T2, T3, T4, T5, T6, T7, T8, U1, U3, U4, U5, U6, U7, Y1, Y2, Z1, Z2, Z3, Z4, Z5

Continued on Page 10

Continued from Page 9

Damage Code	Operation Number	Time (hrs.)	Model Indicator (s)
Condition II: 91001 36	91 0000	0.3 hrs. *	P1, P2, P3, P4, P5, P6, P7, P8, P9, Q1, Q2, Q3, Q4, Q5, Q6, Q7, Q8, Q9, QA, Y1, Y2
		0.8 hrs. *	T1, T2, T3, T4, T5, T6, T7, T8, U1, U3, U4, U5, U6, U7
Condition III: 91N65 36 / 91A65 36	91 0000	0.5 hrs. *	Y1, Y2
		0.8 hrs. *	T1, T2, T3, T4, T5, T6, T7, T8, U1, U3, U4, U5, U6, U7
Condition IV: 86132 42	91 0000	0.3 hrs. *	T1, T2, T3, T4, T5, T6, T7, T8, U1, U3, U4, U5, U6, U7, Y1, Y2
Condition V: 91040 36	91 0000	0.3 hrs. *	T1, T2, T3, T4, T5, T6, T7, T8, U1, U3, U4, U5, U6, U7
Condition VI: 91N31 36 (Right)	91 2592	0.1 hrs.	T1, T2, T3, T4, T5, T6, T7, T8, U1, U3, U4, U5, U6, U7
		0.2 hrs.	P1, P2, P3, P4, P5, P6, P7, P8, P9, Q1, Q2, Q3, Q4, Q5, Q6, Q7, Q8, Q9, QA, Y1, Y2
		0.3 hrs.	AA, AB, AE, AC, AD
Condition VI: 91A31 36 (Left)	91 2587	0.1 hrs.	T1, T2, T3, T4, T5, T6, T7, T8, U1, U3, U4, U5, U6, U7
		0.2 hrs.	P1, P2, P3, P4, P5, P6, P7, P8, P9, Q1, Q2, Q3, Q4, Q5, Q6, Q7, Q8, Q9, QA, Y1, Y2
		0.3 hrs.	AA, AB, AE, AC, AD
Condition VII: 91A42 36 (Left)	91 8659	1.3 hrs.	CA, CB, CC
Condition VII: 91N42 36 (Right)	91 8759	1.3 hrs.	CA, CB, CC
If necessary:	91 8787	0.1 hrs.	CA, CB, CC
Condition VIII: 91A12 22 (Left)	91 5832	0.2 hrs.	BA, BB, BC, BD, BE, BF, EA, EB, EC, ED, Z1, Z2, Z3, Z4, Z5, Z6
	91 0000	0.2 hrs. *	BA, BB, BC, BD, BE, BF, EA, EB, EC, ED, Z1, Z2, Z3, Z4, Z5, Z6
Condition VIII: 91N12 22 (Right)	91 5852	0.2 hrs.	BA, BB, BC, BD, BE, BF, EA, EB, EC, ED, Z1, Z2, Z3, Z4, Z5, Z6
	91 0000	0.2 hrs. *	BA, BB, BC, BD, BE, BF, EA, EB, EC, ED, Z1, Z2, Z3, Z4, Z5, Z6

* Separate time punch required.



Note: Repair condition (I through VIII) must be listed in the claim text field.