

Warranty Key Returns

Topic number	LI80.35-P-045746
Version	2
Design group	80.35 Radio remote control
Date	08-19-2009
Validity	All Passenger and Light Truck Models
Reason for change	Attached images updated / Supersedes DTB S-B-80.35/55
Reason for block	

Complaint:

Warranty Key Returns

Cause:

All warranty key returns will be inspected for signs of forced damage, abuse or water damage. If these types of damages are found, the warranty claim may be debited.

Remedy:

Figure 1 shows an example of forced damage and will not be acceptable for warranty returns. Figures 2 and 3 show examples of a defective membrane and is warrantable. Please note for key membrane cracking issue, a SDS guided test is not required. For all electrical key failures, the SDS guided test is still required as per DTB S-B-80.57.24c, as of September 2, 2008.

Attachments	
File	Designation
Fig 1 Non-warrantable - Forced Damage.pdf	Figure 1
Fig 2 Early Membrane Cracking.pdf	Figure 2
Fig 3 All 4 Positions.pdf	Figure 3

Symptoms
Overall vehicle / Safety and locking system / Locks / locking / Remote closing mechanism / Key broken off

Validity

Vehicle	Engine	Transmission	Major assembly 1	Major assembly 2	Major assembly 3
124	*	*	*	*	*
201	*	*	*	*	*
204.003	*	*	*	*	*
204.006	*	*	*	*	*
204.007	*	*	*	*	*
204.008	*	*	*	*	*
204.022	*	*	*	*	*
204.041	*	*	*	*	*
204.044	*	*	*	*	*
204.045	*	*	*	*	*
204.046	*	*	*	*	*
204.052	*	*	*	*	*
204.054	*	*	*	*	*
204.056	*	*	*	*	*
204.065	*	*	*	*	*
204.077	*	*	*	*	*
204.081	*	*	*	*	*
204.085	*	*	*	*	*
204.087	*	*	*	*	*
204.089	*	*	*	*	*
204.207	*	*	*	*	*
204.208	*	*	*	*	*
204.222	*	*	*	*	*
204.241	*	*	*	*	*
204.245	*	*	*	*	*
204.246	*	*	*	*	*
204.252	*	*	*	*	*
204.254	*	*	*	*	*
204.256	*	*	*	*	*
204.277	*	*	*	*	*
204.289	*	*	*	*	*
204.956	*	*	*	*	*
204.981	*	*	*	*	*
204.983	*	*	*	*	*

204.987	*	*	*	*	*
221.022	*	*	*	*	*
221.028	*	*	*	*	*
221.054	*	*	*	*	*
221.056	*	*	*	*	*
221.070	*	*	*	*	*
221.071	*	*	*	*	*
221.077	*	*	*	*	*
221.080	*	*	*	*	*
221.084	*	*	*	*	*
221.086	*	*	*	*	*
221.087	*	*	*	*	*
221.122	*	*	*	*	*
221.128	*	*	*	*	*
221.154	*	*	*	*	*
221.156	*	*	*	*	*
221.170	*	*	*	*	*
221.171	*	*	*	*	*
221.176	*	*	*	*	*
221.177	*	*	*	*	*
221.179	*	*	*	*	*
221.180	*	*	*	*	*
221.184	*	*	*	*	*
221.186	*	*	*	*	*
221.187	*	*	*	*	*
463.200	*	*	*	*	*
463.204	*	*	*	*	*
463.206	*	*	*	*	*
463.207	*	*	*	*	*
463.208	*	*	*	*	*
463.209	*	*	*	*	*
463.215	*	*	*	*	*
463.218	*	*	*	*	*
463.220	*	*	*	*	*
463.221	*	*	*	*	*

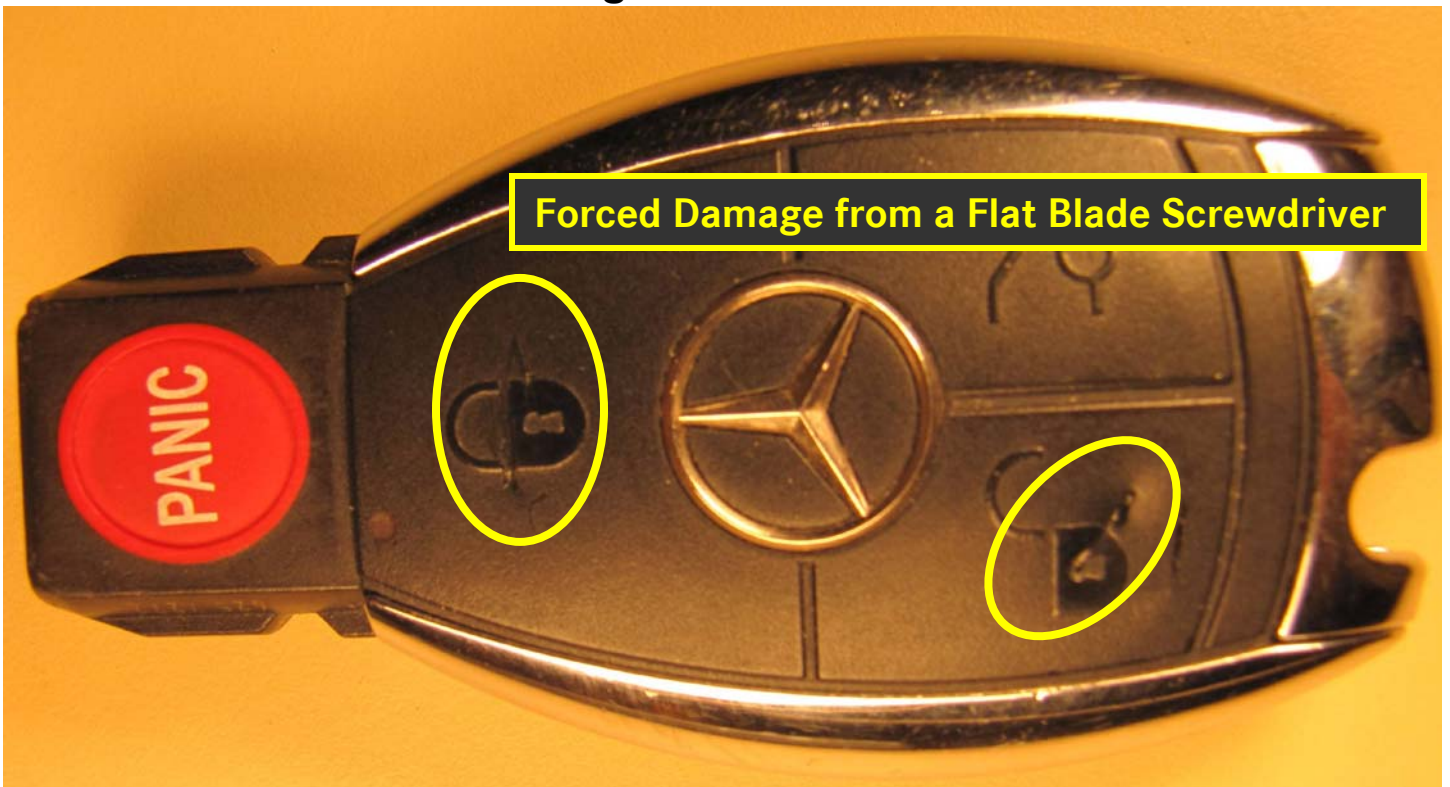
463.223	*	*	*	*	*
463.224	*	*	*	*	*
463.225	*	*	*	*	*
463.227	*	*	*	*	*
463.228	*	*	*	*	*
463.229	*	*	*	*	*
463.230	*	*	*	*	*
463.231	*	*	*	*	*
463.232	*	*	*	*	*
463.233	*	*	*	*	*
463.235	*	*	*	*	*
463.238	*	*	*	*	*
463.240	*	*	*	*	*
463.241	*	*	*	*	*
463.243	*	*	*	*	*
463.244	*	*	*	*	*
463.245	*	*	*	*	*
463.246	*	*	*	*	*
463.247	*	*	*	*	*
463.248	*	*	*	*	*
463.249	*	*	*	*	*
463.250	*	*	*	*	*
463.254	*	*	*	*	*
463.256	*	*	*	*	*
463.270	*	*	*	*	*
463.271	*	*	*	*	*
463.300	*	*	*	*	*
463.303	*	*	*	*	*
463.304	*	*	*	*	*
463.307	*	*	*	*	*
463.308	*	*	*	*	*
463.309	*	*	*	*	*
463.315	*	*	*	*	*
463.318	*	*	*	*	*
463.320	*	*	*	*	*

463.321	*	*	*	*	*
463.322	*	*	*	*	*
463.323	*	*	*	*	*
463.324	*	*	*	*	*
463.325	*	*	*	*	*
463.327	*	*	*	*	*
463.328	*	*	*	*	*
463.329	*	*	*	*	*
463.330	*	*	*	*	*
463.331	*	*	*	*	*
463.332	*	*	*	*	*
463.333	*	*	*	*	*
463.335	*	*	*	*	*
463.338	*	*	*	*	*
463.340	*	*	*	*	*
463.341	*	*	*	*	*
C-Class 202	*	*	*	*	*
C-Class 203	*	*	*	*	*
CL 140	*	*	*	*	*
CL 215	*	*	*	*	*
CL 216	*	*	*	*	*
CLK 208	*	*	*	*	*
CLK 209	*	*	*	*	*
CLS 219	*	*	*	*	*
E-Class 210	*	*	*	*	*
E-Class 211	*	*	*	*	*
E-Class 212	*	*	*	*	*
G-Class 460	*	*	*	*	*
G-Class 461	*	*	*	*	*
GL 164	*	*	*	*	*
M-Class 163	*	*	*	*	*
M-Class 164	*	*	*	*	*
R-Class 251	*	*	*	*	*
S-Class 126	*	*	*	*	*
S-Class 140	*	*	*	*	*

XENTRY

S-Class 220	*	*	*	*	*
SL 107	*	*	*	*	*
SL 129	*	*	*	*	*
SL 230	*	*	*	*	*
SLK 170	*	*	*	*	*
SLK 171	*	*	*	*	*

Non-warrantable – Forced Damage



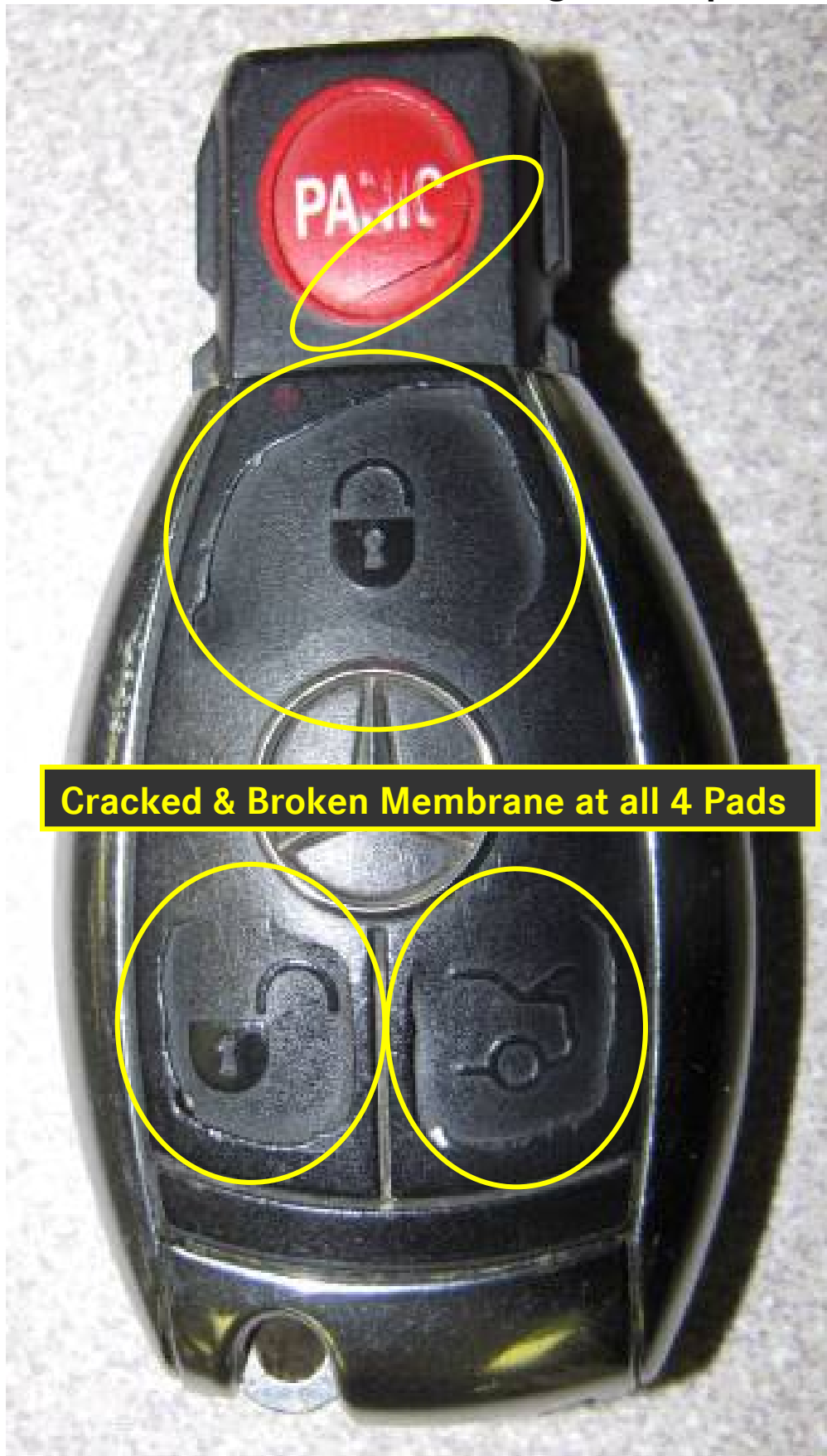
Non-warrantable – Forced Damage



Warrantable - Early signs - Edge of Membrane Cracking



Warrantable - Membrane Cracking at all 4 positions



Cracked & Broken Membrane at all 4 Pads