

The process is the same as in the videos. There were just a few differences. The main issues I had were:

-Removing the chrome power seat panel cover. I purchased the wedge tool from Amazon.

Video Link: <https://youtu.be/IJk4SzgJGR8>

Tool Link: https://www.amazon.com/dp/B07Z8NBTM6?psc=1&ref=ppx_yo2_dt_b_product_details

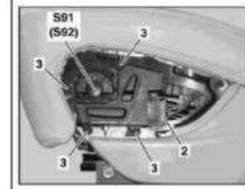


AR91.29-P-0003GZ Remove/install seat adjustment switch unit on front seat 30.11.05
 MODEL 164 with CODE (275) Memory package (driver seat, steering column, mirrors)

Shown on driver seat on model 164.1

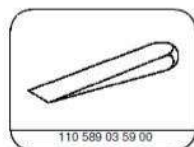
- 1 Cover
- 2 Electrical connector
- 3 Bolts

S91 Driver seat with memory adjustment switch group
 S92 Front passenger seat with memory adjustment switch group



P91.29-2374-03

	Remove/Install		
1	Switch off ignition and remove transmitter key from EIS control unit	1. On vehicles with Keyless Go code 889: Press Keyless Go start/stop button repeatedly until the ignition is switched off. Remove transmitter key from vehicle and store it in a location beyond its transmission range (at least 2 m).	
2	Unclip cover (1)	5. Mounting wedge	*110589035900
3	Disconnect electrical connector (2)		
4	Remove bolts (3)		
5	Remove driver seat adjustment with memory switch group (S91) or front passenger seat adjustment with memory switch group (S92)		
6	Install in the reverse order		

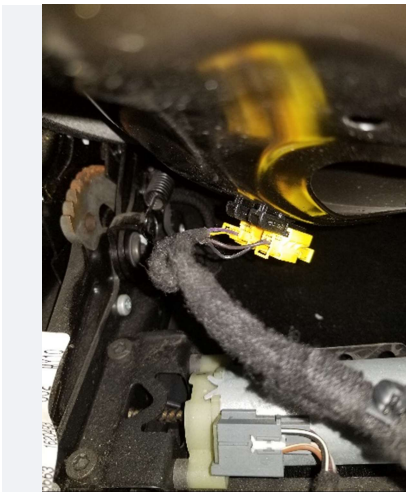


110 589 03 59 00
 Mounting wedge

-Remove the outer 5 black screws and the and the seat should lift up. You can then so that you can lift the seat.



-If you have rear monitors attached to the headrest all the wiring is attached to the seat bottom with by clips. DON'T unplug any of the connections just pop the push pins off the black seat frame bottom.



-Detach this harness and use a pointed tool or small flat head screw driver to release the black and white connections together. This will be hard.

