

Dealer Ordering Guide



Mercedes-Benz MY17 GLS-Class (X166)

An important note about this Guide:

The information presented in this guide is based on the most current information available and is intended for internal use only. Mercedes-Benz reserves the right to make changes at any time, without notice, to colors, materials, equipment, special specifications and models. Pricing may not yet be finalized for some models or options.

Due to variances among monitors and printers the colors that appear on your screen and printouts may not be exact.

For illustrative purposes, some images may show vehicles with European Specification.

Revision History

Date	Changes
12/4/15	Initial Release New Format

Table of Contents

- [What's new in MY17](#)
- [Models](#)
- [Paints](#)
- [Upholsteries](#)
- [Trims](#)
- [Wheels](#)
- [Visual Equipment Differentiation](#)
 - [Steering wheels](#)
 - [Headlights](#)
 - [Brakes](#)
- [Option Packages](#)
- [Special Orders & Accessories](#)
- [Product Highlights](#)

What's new: MY17 Overview

Exterior

- New designed front and rear
- Visible tail pipes
- New headlamp design including LED daytime running lamps
- New LED tail lamp design
- New Sport Design
- New wheel designs

Interior

- New 8" COMAND Screen
- Touchpad w/COMAND Controller
- NTG 5*1 w/ Static Keypad

Standard Equipment

- DYNAMIC SELECT
- Remote Start
- Double sun visors
- Auto-dimming side & rear view mirrors
- Driver memory seat
- Power tilt/telescoping steering column
- Power folding mirrors
- Brand Logo Projector
- COLLISION PREVENTION ASSIST PLUS
- 5 years of Mbrace subscription

Optional Equipment

- New Premium 1 Package Structure
- New Night Package
- Magic Vision Control
- Driver Assistance package Plus including Pre-Safe PLUS

What's new: Premium 1 Package Structure

With added components moving to standard equipment the Premium Package is now delighting customers with expanded content at a lower price.

MY 16

Premium 1 Package

- Navigation map updates for 3 years
 - 7" COMAND/w Navigation
 - SiriusXM Radio with 6 month service
 - 115V AC power outlet
 - Power passenger seat with memory
 - KEYLESS-GO
 - Multi-color Ambient Lighting
 - Heated/cooled cup hldr
-
- Double sun visors
 - Auto-dimming side & rear view mirrors
 - Driver memory seat
 - Power tilt/telescoping steering column
 - Power folding mirrors

Now Standard Equipment

- **MSRP \$4,030**

MY 17

Premium 1 Package

- Navigation map updates for 3 years
 - 8" COMAND w/ Navigation
 - SiriusXM Radio with 6 month service
 - Lane Tracking Pkg **new**
 - Power passenger seat with memory
 - KEYLESS-GO
 - Multi-color Ambient Lighting with illuminated door sills
 - Apple CarPlay
-
- **MSRP \$TBD**

What's new: 521 – Night Package Night Styling

GLS 550 \$TBD
GLS63 \$TBD



With striking design elements in black, the Night Package underscores the sporty, expressive character of the vehicle.

The Night Package includes:

- ① Lamella in the radiator grill in high-gloss black
- ② 21" AMG 5-spoke light-alloy wheels, two tone in black and with a high-sheen finish (89R) (GLS550)
- ③ Simulated under guard at the front and rear in high-gloss black (GLS550)
- ④ Exterior mirrors in high-gloss black
- ⑤ Roof rails in black
- ⑥ Beltline trim strip and window weather-strip in black
- ⑦ Tailpipe trim elements in black (GLS63)



What's new: DYNAMIC SELECT

Standard on all GLS



DYNAMIC SELECT allows the optional selection of different transmission modes which change the characteristics of engine, transmission, suspension and steering to fully bring the best out of the model.

Choice of different driving programs:

- “*Comfort*” standard setting: well-balanced and fuel-efficient
- “*Sport*” mode: more agility and dynamism with sporty steering characteristics, modified shift points, tauter damper tuning and sportier suspension tuning (in conjunction with AIRMATIC)
- “*Slippery*” mode: optimized handling on icy and snow-covered roads, reduced engine and transmission settings
- “*Individual*” mode: variation of individual parameters to suit personal preferences
- “*Off-road*” (in conjunction with 4MATIC) and “*Off-road+*” (in conjunction with Off-road Engineering package) mode offer the optimal settings for off-road driving for the GLS 550
- “*Sport+*” transmission mode for Mercedes-AMG GLS63 further enhances the AMG characteristics of the “*Sport*” mode

What's new: 874 – MAGIC VISION CONTROL \$TBD

*Not in conjunction with heated windscreen washer system (875)
n/a on GLS63*



The adaptive windscreen wiper system allows the driver the best possible visibility even during the wiping process. The washer fluid is sprayed directly in front of the wiper blades and wiped away without delay. The heating system effectively lowers the risk of icing-up. When operating while the sliding sunroof is open, the amount of washer fluid is actively reduced to avoid spraying the interior.

What's new: 587 – Brand Logo Projector

Standard on all GLS



The surround lighting with projection of the brand logo ensures safe entry and exit. This is activated via remote unlocking or locking of the driver's door.

What's new: Exterior



What's new: Exterior



Visible tail pipes

Newly designed rear bumper

Full LED rear taillamps

New wheel designs

What's new: Interior

Pre Facelift Interior



Facelift Interior



* designo upholstery & wood-leather steering wheel are optional

Models

	Displacement	Power	Torque	MSRP	Launch
GLS350d 4M (166.824)	3.0-Liter Single-Turbo 6-Cylinder	255 hp	455 @ 1,600- 2,400	TBD	April 2016
GLS450 4M (166.864)	3.0-Liter Biturbo 6-Cylinder	362 hp	369 @ 1,800- 4,500	TBD	April 2016
GLS550 4M (166.873)	4.7-Liter Biturbo 8-Cylinder	449 hp	516 @ 1,800- 3,500	TBD	April 2016
GLS63 (166.875)	5.5-Liter Biturbo 8-Cylinder	577 hp	561 @ 2,000- 5,000	TBD	April 2016

Paints

Non-metallic Paints

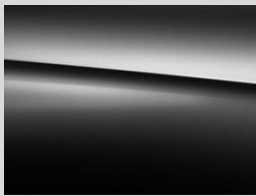


040
Black



149
Polar White

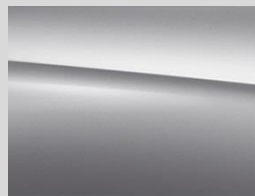
Metallic Paints



197
Obsidian Black



755
Steel Grey



775
Iridium Silver



792
Palladium Silver



796
Dakota Brown



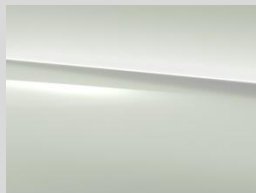
890
Lunar Blue



988
Diamond Silver

designo Metallic Paints

Metallic paint with high-quality effect pigments and exclusive color shades



799
Diamond White



new

996
Cardinal Red

Upholsteries

Standard: GLS350d/GLS450

MB-**Tex**



111 Black
*Black or Crystal Grey
Headliner*



114 Espresso Brown
Porcelain Headliner



115 Ginger Beige/Espresso
Brown
Porcelain Headliner



125 Ginger Beige/Black
*Black or Porcelain
Headliner*

Upholsteries

Standard: GLS550 Optional: GLS350d / GLS450

Leather



211 Black
Black or Crystal Grey
Headliner



215 Ginger Beige/Espresso
Brown
Porcelain Headliner



224 Saddle Brown/Black
Black or Crystal Grey
Headliner



228 Crystal Grey/Black
Black or Crystal Grey
Headliner



245 Ginger Beige/Black
Black or Porcelain
Headliner

Optional: GLS350d, GLS450, GLS550



designo

Exclusive Nappa Leather



954 *designo*
Espresso Brown
65U Porcelain
DINAMICA Headliner



955 *designo*
Porcelain/Black
61U Black or 65U Porcelain
DINAMICA Headliner

Upholsteries

Standard: AMG GLS63

Exclusive Nappa Leather



531 Black
61U Black *DINAMICA*
Headliner



534 Espresso Brown/ Black
61U Black *DINAMICA*
Headliner



535 Porcelain/Black
61U Black or 65U
Porcelain *DINAMICA*
Headliner

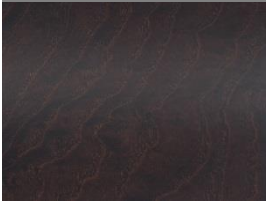
Trims

734 – Eucalyptus Wood



Standard on all models except AMG models
Does not include wood cover over cupholder

H09 – Natural Grain Brown Ash Wood



Optional on all models

H21 – Black Piano Lacquer



Optional on all models

729 – Anthracite Poplar Wood



Optional on all models

731 – Burl Walnut



n/c on all models
available only w/leather

Trims

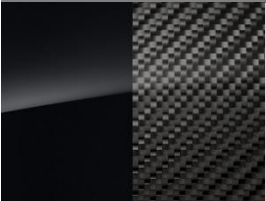
739 – Aluminum



n/c on all models

H10 – Carbon-Fiber/ Black Piano Lacquer

new



Available on GLS63
\$TBD

Wheels

Standard

Optional

Optional

GLS350d 4M



R39 – 5-spoke
All-Season
19"



58R – 10-spoke
All-Season
20"

GLE450 4M



R39 – 5-spoke
All-Season
19"



58R – 10-spoke
All-Season
20"

GLS550 4M



86R – 5-spoke
All-Season
21"



89R – 5-spoke bicolor
All-Season
21"

Wheels

Standard

Optional

Optional

AMG GLS63



689 - AMG Twin
7-Spoke
High Performance
21"



692 - AMG Twin
7-Spoke (Black)
High Performance
21"



88R - AMG Multi-spoke
bicolor
High Performance
22"



90R - AMG Multi-spoke
Black
High Performance
22"

Visual Equipment Differentiation

Steering Wheels

280 – Nappa Leather Multifunction Steering Wheel



- Standard on GLS350d, 450, & 550 4MATIC
- The 12 ergonomic control buttons on the left of the multifunction steering wheel in Nappa leather operate the display menus in the instrument cluster and the Audio 20/COMAND display. On the right, the driver can control the volume of audio devices, telephone and navigation system

281 – AMG Performance Steering Wheel



- Standard on GLS63
- For even more grip when carrying out sporty driving maneuvers, the AMG Performance steering wheel in Nappa leather features a grip area upholstered in DINAMICA microfiber

289 – Wood/Leather Steering Wheel

\$TBD



- Optional on all models
- The combination of high-quality leather in the grip area and fine wood inserts at the top and bottom make this steering wheel a visual and tactile highlight. The wood finish is the same type as the selected wood trim

Visual Equipment Differentiation

Steering Wheels

443 – Heated Steering Wheel

\$TBD



- Optional on all models
- On cold days, heating of the steering wheel rim very rapidly ensures cozy temperatures of the grip area and thus also warm hands. The switch for turning the heating on and off is positioned right next to the steering wheel. The temperature oscillates around 95 °F

Visual Equipment Differentiation

Headlights

Halogen Headlamps (Standard)/ LED tail lights (Standard)



- Halogen headlights including integral LED daytime running lamps

Intelligent LED Headlamps (319 Lighting Package - Optional)/ LED tail lights (Standard)



Standard on GLS550 & GLS63

Intelligent LED Headlamps:

- Automatic adjustment of headlamps to weather, lighting and driving conditions
- Selective masking of light beam to avoid dazzling vehicles
- Variable low beam for country roads and motorways
- Automatically activated cornering lights
- Active light and enhanced fog lamp function
- LED technology
- Welcome Home function: the LED fiber optics in the headlamps light up in blue after opening the vehicle and transition to white locator lighting
- In conjunction with the Off-road engineering package, the LED Intelligent Light System features an off-road light function for the "Off-road+" transmission mode

Visual Equipment Differentiation Brakes

B06 – AMG Silver Painted Brake Calipers



- Standard on GLS63
- The brake calipers painted in a silver color with AMG logo convey a sense of value and sportiness

U70 – AMG Red Painted Brake Calipers



- No cost option for GLS63
- Painting the brake calipers in red visually underscores the high performance of the brake system

Option Packages

P01 – Premium 1 Package

\$TBD

Standard on GLS550, GLS63

- 22P – Lane Tracking Package
 - 234 – Blind Spot Assist
 - 476 – Lane Keeping Assist
- 242 – Power passenger seat with memory & lumbar
- 502 – Navigation updates for 3 years
- 531 – 8” COMAND/w Navigation
- 536 – SiriusXM® Satellite Radio for 6 months
- 876 – Multi-color ambient lighting with illuminated doorsills
- 889 – KEYLESS-GO
- 16U – Apple CarPlay®

319 – Lighting Package

\$TBD

Standard on GLS550, GLS63

- 608 – Adaptive Highbeam Assist
- 640 – LED Dynamic Headlamps

322– Appearance Package

\$TBD

n/a on GLS550, GLS63

- 58R – 20” 10-Spoke
- 846 – Illuminated running boards

430 – Off-road Package

\$TBD

Requires SPC 214 Adaptive Damping System. n/a on GLS350d, GLS63

- 430 – On-&Off-road package
- 481 – Under guard

Option Packages (continued)

468 – ACTIVE CURVE SYSTEM Package

\$TBD

ACS available as stand alone option for GLS550

Standard on GLS63 with all new 215 ADS PLUS

- 214 – ADS Adaptive dampening system
- 468 – ACTIVE CURVE SYSTEM

581 – 3-Zone Automatic Climate Control

\$TBD

Standard on GLS550, GLS63

- 581 – 3-Zone automatic climate control
- 582 – Rear Air Conditioning

811 – Bang & Olufsen Sound System

\$TBD

Extended Mobility Tires n/a on GLS550, GLS63

- 811 – Bang & Olufsen Sound System
- R66 – Extended Mobility Tires

521 – Night Package/Styling

\$TBD

new

n/a on GLS350d, GLS450

- P55 – Night Package Code
- 89R – 21” AMG 5-spoke wheel two tone in black (GLS550)

996 – Parking Assist Package

\$TBD

Standard on GLS550, GLS63

- P44 – Parking Package
- 235 – PARKTRONIC with Active Parking Assist
- 501 – Surround view camera system

Option Packages (continued)

997 – Driver Assistance Package

\$TBD

Requires P01 Package

- 23P – Driving Assistance Package Plus
- 233 – DISTRONIC PLUS with Steering Assist
- 237 – Active Blind Spot Assist
- 238 – Active Lane Keeping Assist
- **253 – Collision Monitoring System (CMS) – Rear**
- **266 – DISTRONIC PLUS with Steering Assist and Stop & Go Pilot**
- 268 – BAS PLUS with Cross-Traffic Assist
- 271 – CMS Pedestrian
- 300 – PRE-SAFE Brake with Pedestrian Recognition
- **513 – Speed Limit Assist (*requires COMAND*)**

P62 – *designo* Porcelain/Black Leather Package

\$TBD

Only with designo Porcelain/Black upholstery (955)

n/a on GLS63

- P63 – *designo* Package Code
- 61U – *designo* Black DINAMICA Headliner

P87 – *designo* Espresso Brown Leather Package

\$TBD

Only with designo Espresso Brown (954)

n/a on GLS63

- P63 – *designo* Package Code
- 65U – *designo* Porcelain DINAMICA Headliner

Stand-Alone Options/Special Orders/Accessories

Stand-Alone Options		
235	PARKTRONIC with Active Parking Assist	\$TBD
289	Wood/leather steering wheel	\$TBD
297	Manual 2 nd Row Sunshades	\$TBD
311	Heated & Cooled Front Cup Holders	\$TBD
399	Multi-contour front seats with massage and comfort headrests <i>standard on GLS550, GLS63</i>	\$TBD
401	Ventilated front seats <i>standard on GLS550, GLS63</i>	\$TBD
413	Panorama sunroof <i>standard on GLS63</i>	\$TBD
443	Heated steering wheel	\$TBD
468	ACTIVE CURVE SYSTEM <i>GLS550</i>	\$TBD
550	Trailer hitch	\$TBD
810	Harman/Kardon Sound System <i>standard on GLS550, GLS63</i>	\$TBD
843	Power EASY-ENTRY 2 nd Row	\$TBD
846	Illuminated running boards <i>Std. on GLS550, GLS63</i>	\$TBD
864	Rear seat entertainment	\$TBD
866	Rear seat entertainment pre-wiring	\$TBD
872	Heated rear seats with climate control panel <i>standard GLS63</i>	\$TBD
874	MAGIC VISION CONTROL <i>n/a on GLS63</i>	\$TBD
883	Soft-close doors <i>standard on GLS550, GLS63</i>	\$TBD
P21	P21 - Air Ionization with air filter	\$TBD

Special Orders Options & Accessories

Special Order Options (additional charge of \$250)

214	ADS Active Damping System	\$TBD
282	Rear-seat center armrest pass through	\$TBD
293	Rear side air bags	\$TBD
892	Rear lockable storage compartment <i>n/a on GLS63</i>	\$TBD
R66	Run Flat tires	\$TBD
U09	MB-TeX wrapped dashboard	\$TBD

MB Accessories Program

00A	Illuminated Star <i>n/a GLS63</i>	\$TBD
068	Wheel Locks	\$TBD
980	Accessory Chrome Package <ul style="list-style-type: none"> • 070 – Chrome Door Handle Inserts • 133 – Hood Fin Covers 	\$TBD

Product Highlights: COLLISION PREVENTION ASSIST PLUS

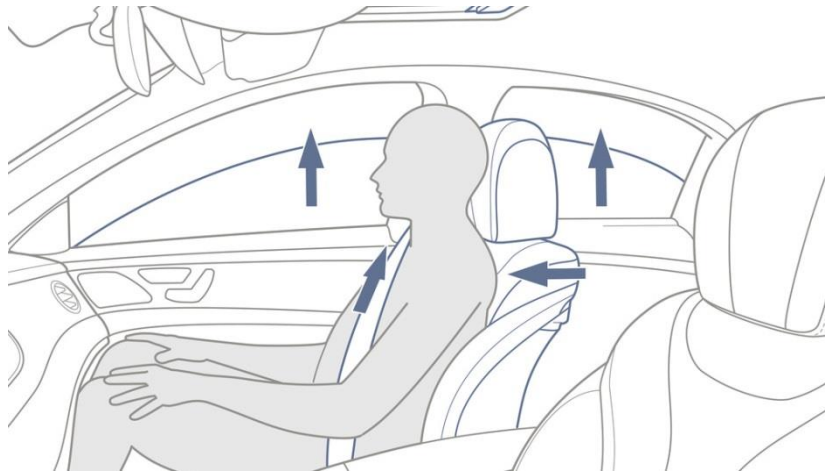
Standard on all models



- Driving assistance system to lessen the danger of rear-end collisions and mitigate the consequences of accidents
- Combination of radar-based distance warning, assisted braking by Adaptive Brake Assist and autonomous partial braking
- Visual warning by means of a warning lamp in the instrument cluster when the safe distance to vehicles in front is too low within a speed range between 20 and 155 mph
- Additional audible warning if the distance diminishes rapidly
 - In the case of moving vehicles, in a speed range between 19 and 155 mph
 - In the case of stationary obstacles, in a speed range between 4 and 124 mph
- In case of emergency braking by the driver – and if necessary – increase in the brake pressure by Adaptive Brake Assist to prevent a collision
- Initiation of autonomous partial braking if the driver fails to react:
 - In the case of moving vehicles, in a speed range between 4 and 65 mph
 - In the case of stationary obstacles, in a speed range between 4 and 31 mph

Product Highlights: PRE-SAFE PLUS

Standard on all models



PRE-SAFE PLUS can be activated by the following situations:

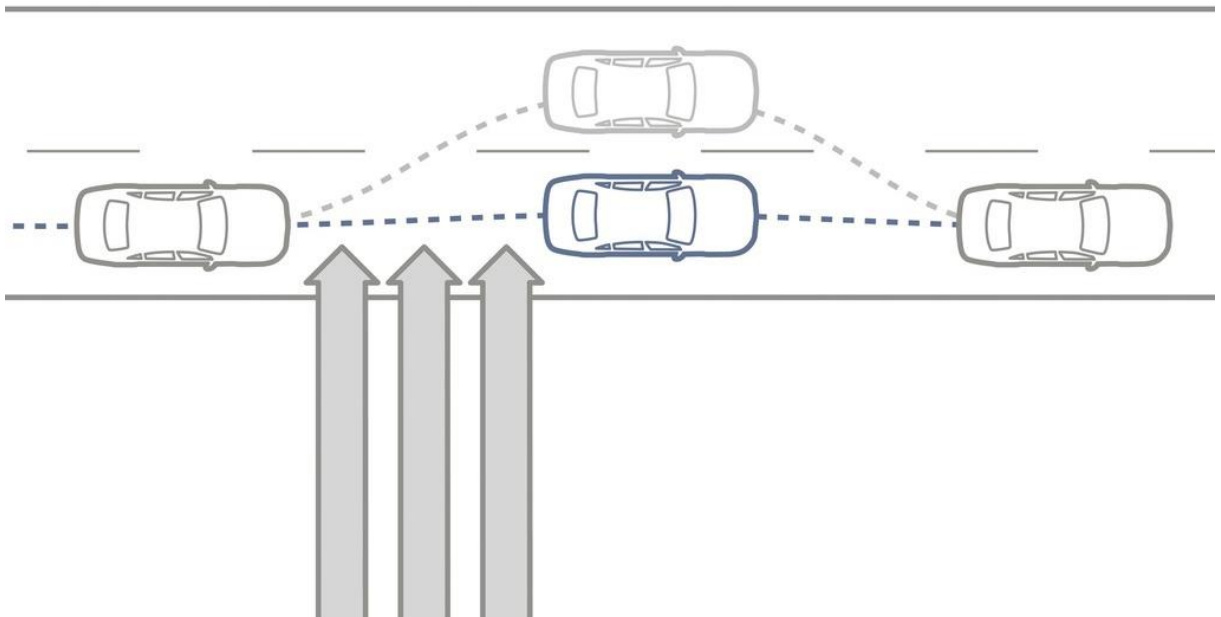
- Hard braking: the deceleration required by the driver is much greater than the physically possible vehicle deceleration on a slippery surface (aquaplaning, ice, snow).
- Critical steering movements: rapid steering movements at high speeds, which indicate a panic response by the driver and can destabilize the vehicle

PRE-SAFE PLUS is able to initiate the following measures:

- Reversible preventive tensioning of the front seat belts by electric motors
- Open side windows and an open panoramic sunroof are almost completely closed when an imminent rollover is detected
- The front passenger seat is moved to a more favorable position for a possible impact. Repositioning depends on whether the occupant is wearing a seat belt or not, and whether a child seat has been detected.

Product Highlights: CROSSWIND ASSIST

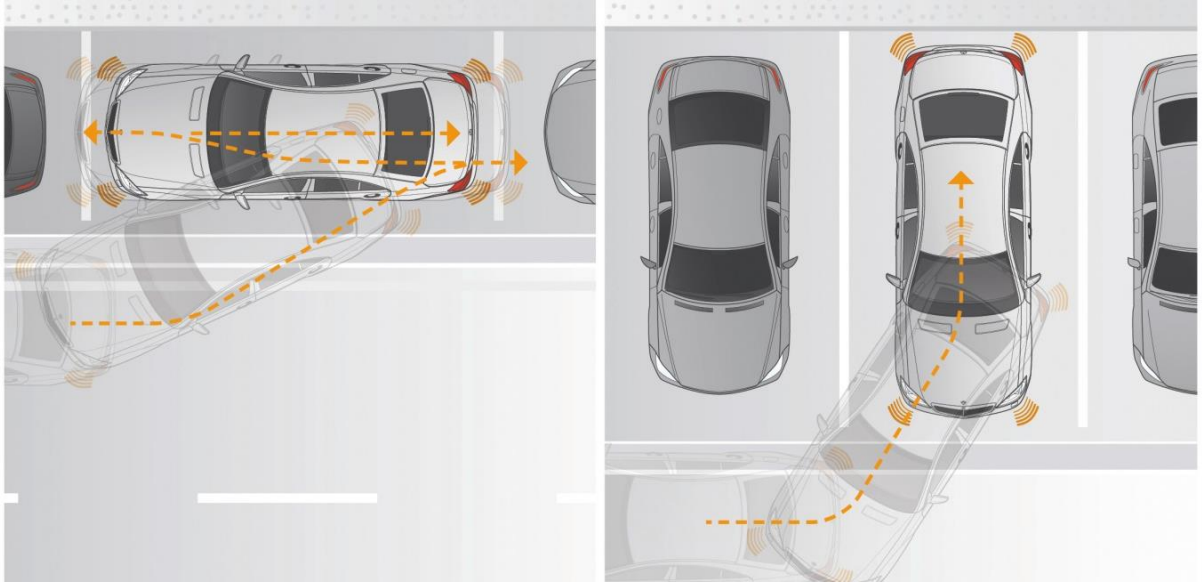
Standard on all models



- Traditionally, strong gusts of wind may lead to sudden lateral drift of the vehicle
- Crosswind Assist aids the driver by reducing the vehicle's lateral drift substantially in windy driving conditions
- Crosswind Assist is integrated into the ESP® sensor system and enables the timely detection of gusts of crosswind
- Automatic brake intervention on the wheels on the side of the vehicle facing the wind results in a yaw motion which counteracts the crosswind
- Crosswind Assist substantially enhances the driver's sense of control, stability and safety
- Crosswind Assist is active from 50mph when driving straight ahead and on slight bends

Product Highlights: Active Parking Assist including PARKTRONIC

Optional on all models



- At speeds up to 22 mph, Active Parking Assist automatically searches for suitable parking spaces (perpendicular & parallel) via ultrasonic sensors
- If the vehicle speed is below 19mph, the system indicates that it has found a suitable parking space by displaying a "P" with a direction arrow in the multifunction display
- Active Parking Assist takes over control of the steering wheel if the driver selects reverse gear and confirms the intention to park in the suggested space via the multifunction steering wheel
- The driver only needs to operate the accelerator and brake pedal, Active Parking Assist smoothly steers the car into the parking space
- An automatic braking function is active during automatic parking which stops the vehicle when a certain distance from the end of the parking space has been reached, or an obstacle is detected

Product Highlights: AIRMATIC Package



The combination of AIRMATIC air suspension and the Adaptive Damping System (ADS) reduces road roar and tire vibration characteristics, whilst also ensuring excellent driving dynamics both on and off-road.

- The damping at each wheel is adapted to the current driving situation and road surface condition
- Where the dynamic driving demands are high, for example during fast cornering, the spring rate hardens automatically, so reducing rolling and pitching
- With the "Comfort" and "Sport" settings, AIRMATIC can be configured for more comfort or sportiness
- In order to increase off-road capability, this can be raised by up to 2.4 in (by up to 3.5 in when combined with the optional OFFROAD package (430))
- Overall, a maximum ground clearance of 10.9 in is therefore possible (12.0 in with the OFFROAD package (430))

Gallery



Gallery



Gallery

531 – Exclusive Nappa Leather Black



535 – Exclusive Nappa Leather Porcelain / Black



Additional information: European model shown.

Gallery

Left and center elements folded



843 – EASY ENTRY system power release



Gallery

531 – COMAND Online



281 – AMG Performance Steering Wheel in black



Gallery

Center console with USB port



811 – Bang & Olufsen sound system

