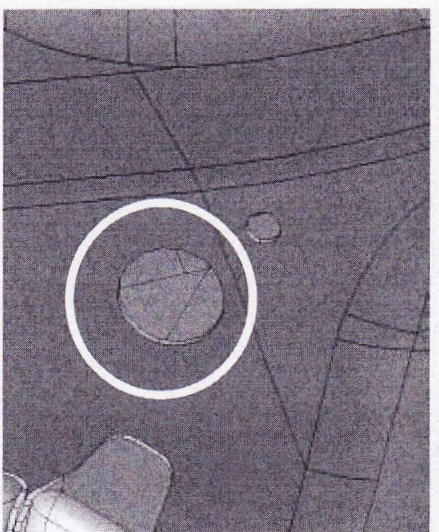
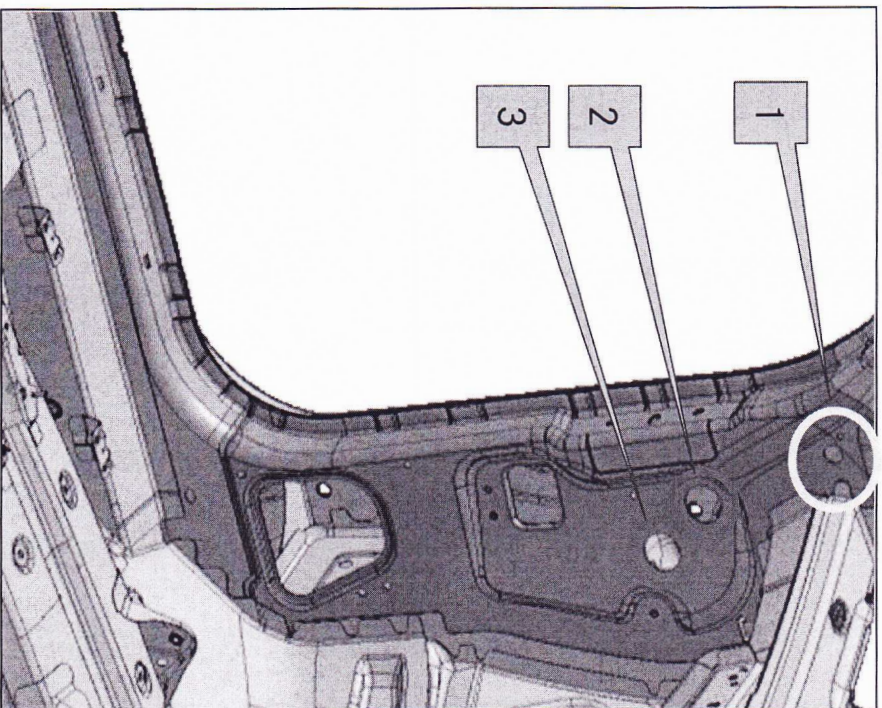
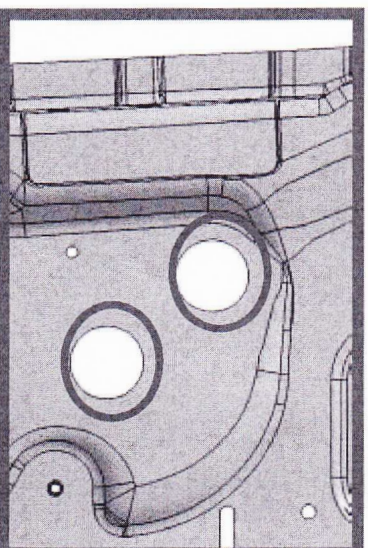


Close holes (1, 2, 3) with plugs

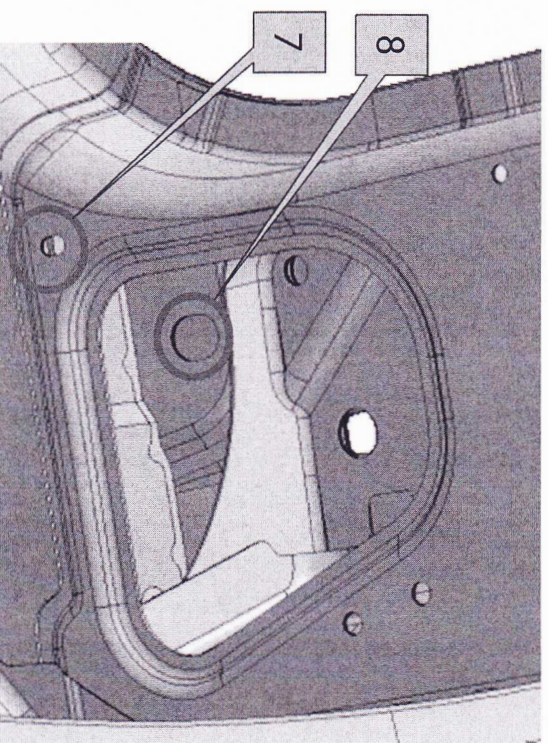
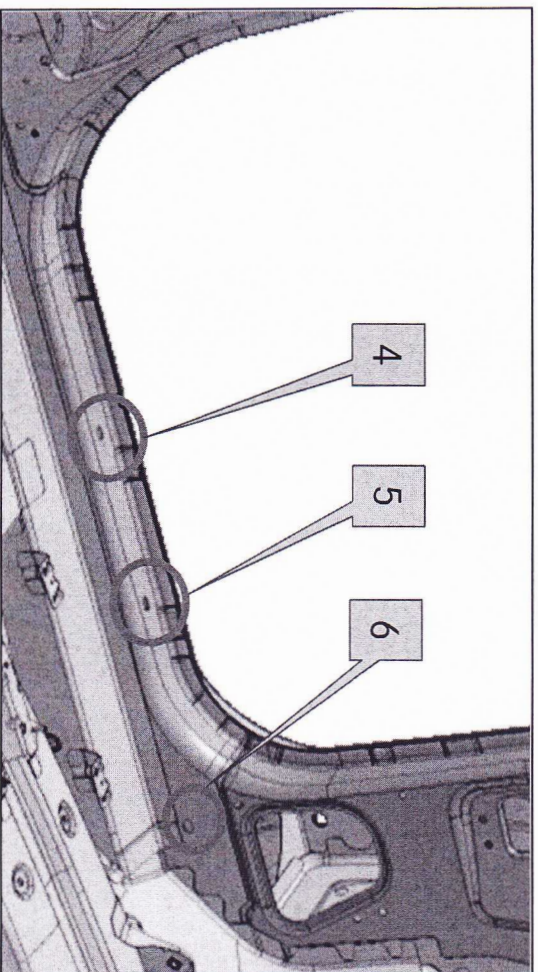


A 003 997 55 86
Ø 20 mm

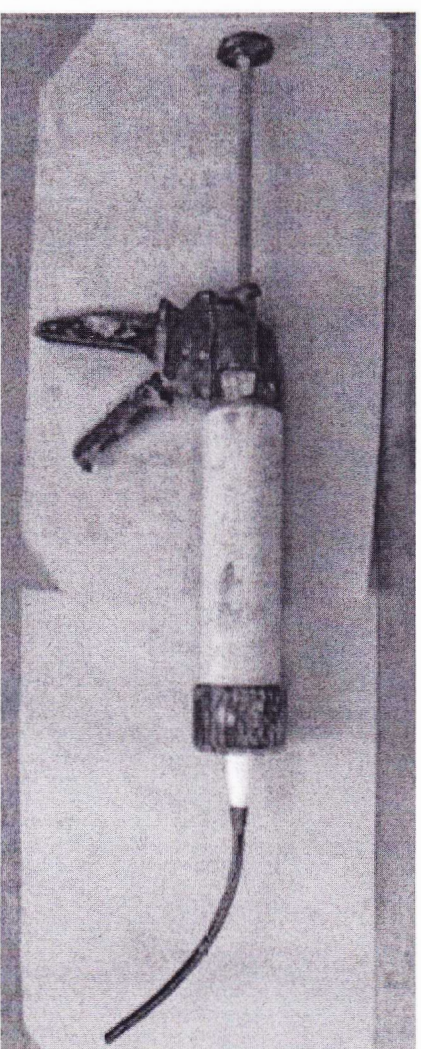
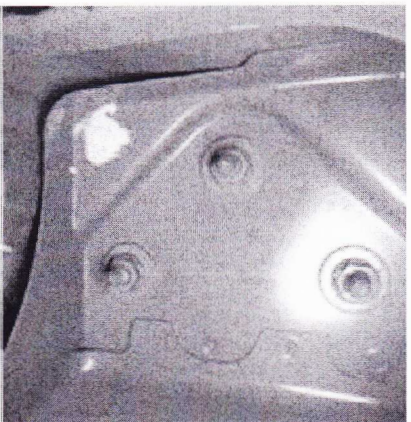
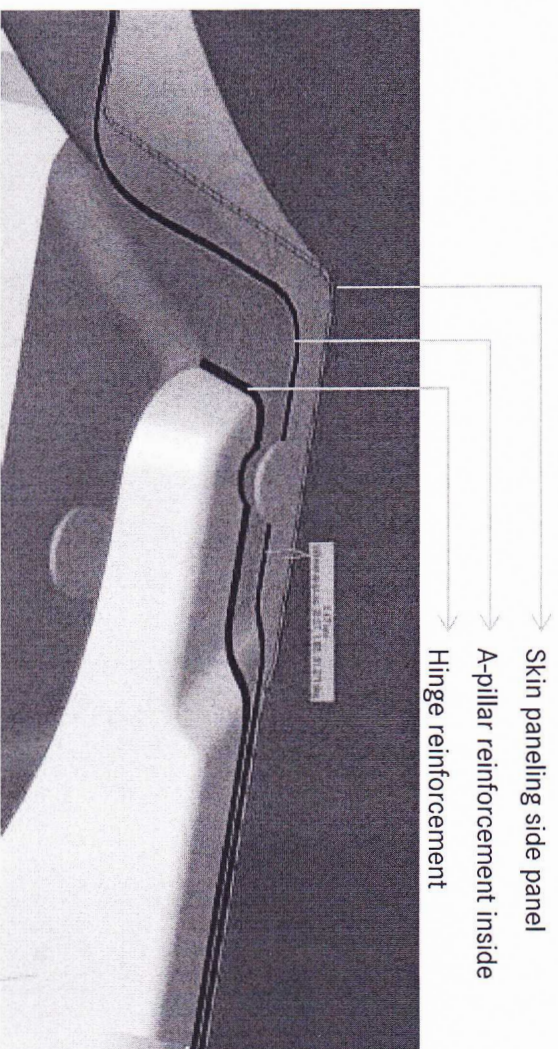
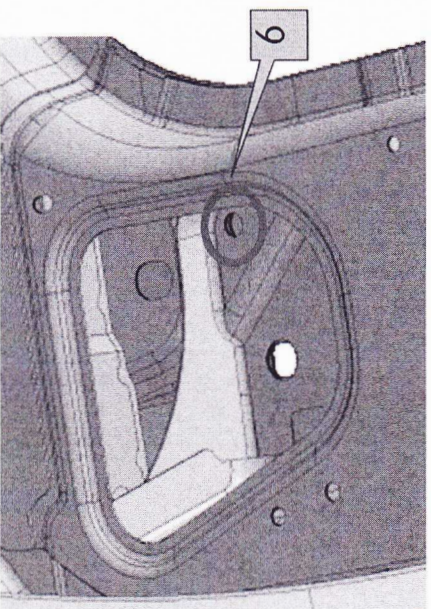


A 001 998 81 50
Ø 40 mm

Close holes (4, 5, 6, 7, 8) with tape A 006 989 30 85

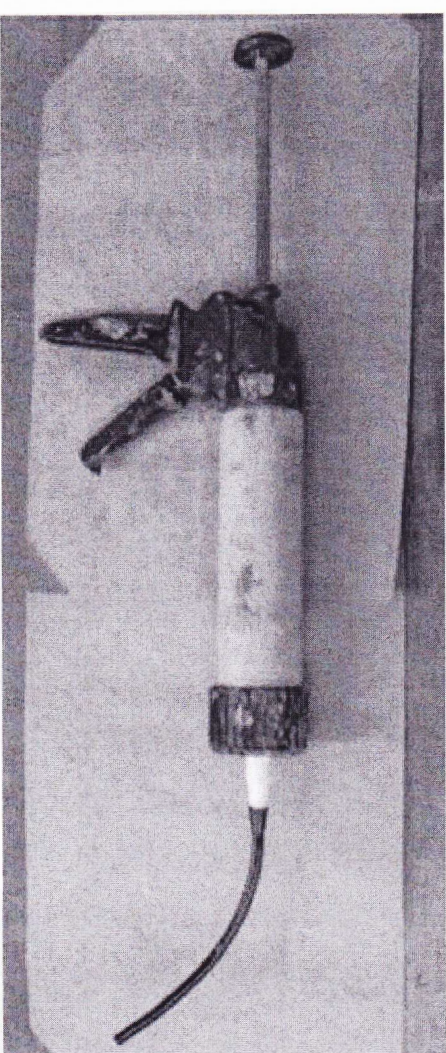
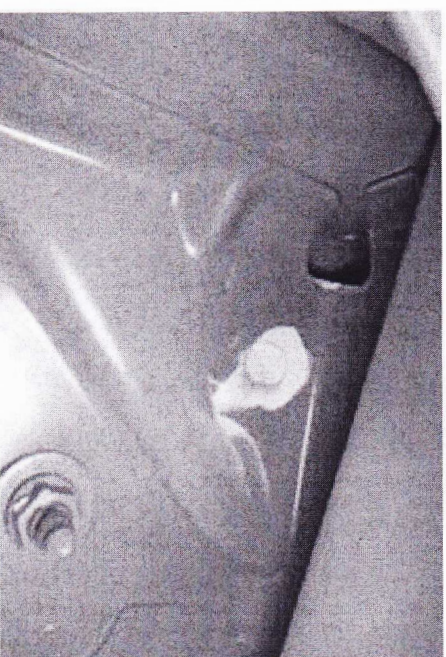
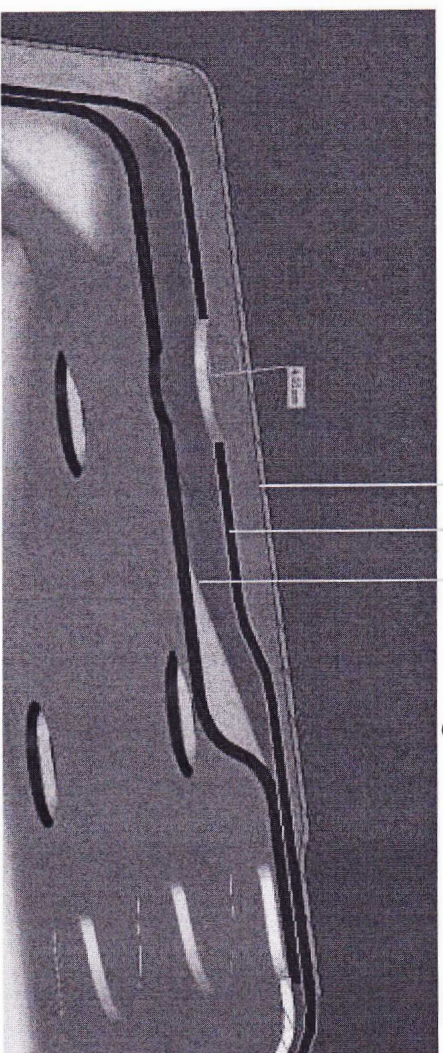
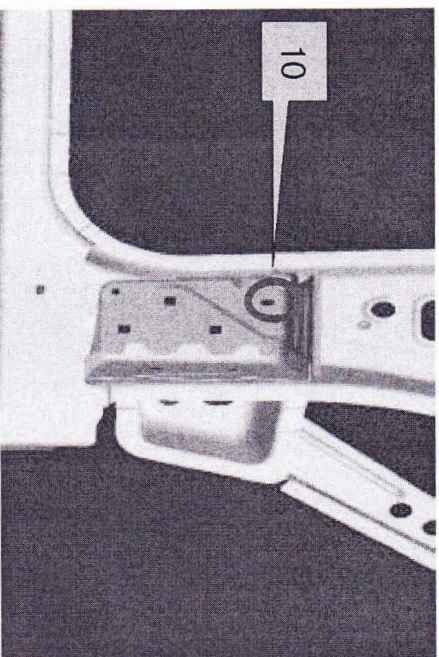


Close hole (9) with sealing A 005 989 6320



Lead hose through the hole (9) to the skin paneling side panel. Pull out the hose slowly and apply sealing material until the cavity between the panels is completely filled.

Close hole (10) with sealing A 005 989 6320



Lead hose through the hole (10) to the skin paneling side panel. Pull out the hole slowly and apply sealing material until the cavity between the panels is completely filled.