

Dealer Ordering Guide



Mercedes-Benz MY17 GLC (X253)

**PRELIMINARY.
DOCUMENT SUBJECT TO
CHANGE.**

An important note about this Guide:

The information presented in this guide is based on the most current information available and is intended for internal use only. Mercedes-Benz reserves the right to make changes at any time, without notice, to colors, materials, equipment, special specifications and models. Pricing may not yet be finalized for some models or options.

Due to variances among monitors and printers the colors that appear on your screen and printouts may not be exact.

For illustrative purposes, some images may show vehicles with European Specification.

Revision History

Date	Changes
04/1/2016	Initial release
04/11/2016	Updated <i>designo</i> Pkgs
04/14/2016	Updated Package Descriptions
04/27/2016	Updated Trailer Hitch Rating
05/02/2016	Updated Head Up Display Availability
05/26/2016	Addition of the GLC43 & GLC300 Package/Option Pricing.
5/31/2016	Updated standard steering wheel for GLC43

Table of Contents

- [What's new in MY17](#)
- [Models](#)
- [Standard Equipment](#)
- [Paints](#)
- [Upholsteries](#)
- [Trims](#)
- [Wheels](#)
- [Visual Equipment Differentiation](#)
 - [Headlights](#)
- [Option Packages](#)
- [Stand-Alone Options/Special Orders/Accessories](#)
- [Specifications](#)
- [Product Highlights](#)
- [Advantages over competition](#)
- [Gallery](#)

What's new: MY17 Overview

Standard Equipment

- GARMIN Pre-Wiring

Optional Equipment

- New Premium Package Structure
- Introduction of LED Headlamps
- Introduction of 430 Off Road Engineering Package
- Touchpad only available with COMAND

Paints

- Addition of Brilliant Blue Metallic Paint (896)

Upholsteries

- Addition of Saddle Brown Leather (234)



What's new: MY17 Overview

Variants

- New AMG GLC 43

Standard Equipment

- 9-G-TRONIC transmission w/ shift paddles
- 3-stage ESP system
- AMG Sport Suspension based on AIR BODY CONTROL
- AMG Performance 4MATIC with 31% front/69% rear power distribution
- AMG DYNAMIC SELECT (ECO, Comfort, Sport, Sport+, Individual)
- Rearview Camera
- SIRIUSXM Satellite Radio
- Aluminum Trim

Optional Equipment

- Premium Package Structure
- AMG Performance Exhaust (U78)
- Touchpad only available with COMAND
- AMG Performance Seats

AMG Exclusive Upholsteries

- MB-Tex/DINAMICA Black Upholstery with Red Stitching (641)
- Black Leather with Red Stitching (241)

AMG Exclusive Trims

- Addition of Carbon Fiber Trim (H73)



What's new: Premium Package Structure

With added components moving to standard equipment the Premium Packages are now delighting customers with expanded content at a lower price

MY16

Premium 1 Package

- SiriusXM Radio
- KEYLESS GO
- 115V Power Outlet
- Blind Spot Assist
- Heated Front Seats
- **MSRP \$1,850**

Multimedia Package

- COMAND Navi w/ Single Disc
- Navigation Map Updates for 3 Years
- **MSRP \$2,330**

Lighting Package

- Adaptive Highbeam Assist
- Full-LED Headlamps with Active Curve Illumination
- **MSRP \$1,500**

Interior Package

- Leather Upholstery
- MB-TEX Dashboard
- Storage Pkg
- Illuminated Doorsills
- Ventilated Seats
- Ambient Lighting Pkg
- **MSRP \$3,150**

MY17

Premium 1 Package

- SiriusXM Radio
- KEYLESS GO
- 115V Power Outlet
- Blind Spot Assist
- Heated Seats
- **MSRP \$ 1,830**

Premium 2 Package

- *Premium 1 plus:*
- LED Headlamps
- Burmester Surround Sound System
- **MSRP \$ 3,330**

Premium 3 Package

- *Premium 2 plus:*
- COMAND Navi w/ Single Disc
- Navigation Map Updates for 3 Years
- Touchpad
- Ambient Lighting (W/Doorsills)
- Storage Package
- **MSRP \$ 5,680**

Premium 4 Package

- *Premium 3 plus:*
- Driver Assistance Pkg.
- Dynamic LED Headlamps
- AIR BALANCE
- **MSRP \$ 8,480**

321 – Sport Package

\$1,900

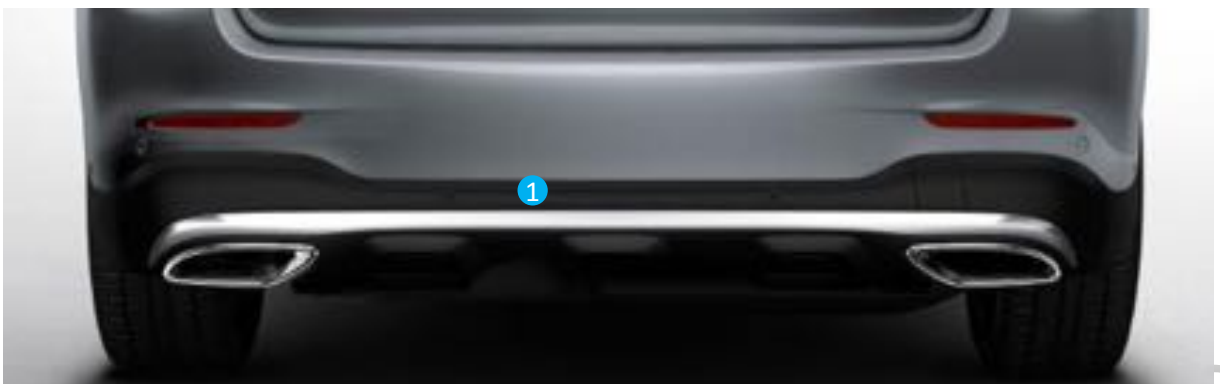
Optional on GLC300 models. Not available on GLC43.



Added sportiness, exclusivity and fun at the wheel are all part of the perfectly coordinated package of equipment that makes up the AMG Line Exterior.

The Sport Package includes:

- ① AMG body styling consisting of AMG front and rear apron
- ② 19" AMG Himalaya Grey 5-twin-spoke light-alloy wheels (638)
 - MB-TEX Covered Dashboard & Upper Door Panels w/Top-Stitching



521 – Night Package

\$300

Only in conjunction with 321 Sport Package.



Striking design features in black underscore the sporty, expressive character of the vehicle

The Night Package includes:

- ① Radiator trim with integral Mercedes star and two lamellas in high-gloss black with chrome inserts
- ② 19" AMG 5-twin-spoke light-alloy wheels painted in high-gloss black with a high-sheen finish (99R)
 - Wheel Shown is Optional: 20" AMG multi-spoke light-alloy high performance wheels painted in high-gloss black with high-sheen finish (698) **(\$1,050)**
- ③ Roof rails powder-coated in matte black
- ④ Under guard front/rear painted in black
- ⑤ Exterior mirrors painted in high-gloss black
- ⑥ Waistline trim strip and window weather strip in high-gloss black



521 – AMG Night Package

\$300



Striking design features in black underscore the sporty, expressive character of the vehicle

The Night Package includes:

- ① Simulated front under guard in high-gloss black
- ② High-gloss black fins in the AMG front apron
- ③ Roof rails powder-coated in matte black
- ④ Heat-insulating, dark-tinted glass starting from the B-pillar
 - AMG rear apron with trim in high-gloss black
 - Chromed black tailpipes



DYNAMIC SELECT

Standard on the GLC300/300 4M.



At a touch of the DYNAMIC SELECT feature, drivers can choose between comfortable, sporty, particularly sporty and efficient driving styles, or their own individually defined style. Parameters such as the engine, transmission and steering characteristics are adjusted according to the selected drive mode.

Choice of up to 5 different driving programs:

1. "Comfort" standard setting: well-balanced and fuel-efficient
2. "Eco" mode: for keeping fuel consumption as low as possible
3. "Sport" mode: added agility and dynamism thanks to a more direct steering characteristic curve, sporty, taut suspension tuning (in conjunction with AIR BODY CONTROL air suspension), spontaneous throttle response and modified shift points (with 9G-TRONIC PLUS)
4. "Sport+" mode: even sportier performance, the suspension (in conjunction with AIR BODY CONTROL air suspension) and drive system have an even more dynamic setup
5. "Individual" mode: individual parameters can be varied as required, using the Controller and the configuration menu in the head unit

AMG DYNAMIC SELECT

Standard on the GLC43.



At a touch of the AMG DYNAMIC SELECT feature, drivers can choose between 5 different drive modes as desired. Parameters such as the engine, transmission, exhaust system, suspension and steering characteristics are adjusted according to the selected drive mode.

Choice of up to 5 different driving programs:

1. "Comfort" standard setting: well-balanced and fuel-efficient using the Auto Start/Stop function & early upshifts
2. "Eco" mode: for keeping fuel consumption as low as possible using the Auto Start/Stop function & very early upshifts
3. "Sport" mode: sportier driving with early downshifts and double-declutching when downshifting
4. "Sport+" mode: extremely sporty driving style thanks to acoustically emphasized throttle blips during downshifts as well as selective torque interventions on upshifts with cylinder suppression for optimal shift times, higher idling speed for faster starting off
5. "Individual" mode: individual parameters can be varied as required, using the Controller and the configuration menu in the head unit



421 – 9G-TRONIC

Standard on all GLC models.



9G-TRONIC – faster, smoother, more efficient

Featuring nine forward gears, this automatic transmission takes efficiency, comfort and dynamism to a completely new level. It is the world's first 9-speed automatic transmission with hydrodynamic torque converter in the premium segment. The larger ratio range allows a reduction in engine speed. Performance remains excellent while ride comfort is enhanced and noise levels are reduced. The reduced intervals between the gears lead to faster gear changes and enhanced spontaneity and agility. At the same time, the 9G-TRONIC impresses with smooth, barely perceptible gear shifting like that of a continuously variable transmission. As the 9G-TRONIC is able to skip individual gears, multiple downshifts are possible for fast and powerful sprints.

For the GLC43, the transmission control has been specifically adapted by Mercedes-AMG to suit the characteristics of the vehicle, thus allowing greater agility and a better response. As a result, the driver's shift commands are carried out at high speed – the drivetrain responds immediately and with utmost precision.



448 – Touchpad

Optional on all GLC models. (Incl. with P03 Pkg)



The functions of COMAND can be controlled intuitively via the innovative touchpad, using single or multiple-finger gestures (multi-touch).

- Touchpad approx. 2.56 x 1.77 inches in size and comfortable hand rest in one single component
- Additional full-fledged input option for COMAND Online and Audio 20 CD in addition to the COMAND Controller and LINGUATRONIC
- Recognizes single and multiple-finger gestures (multi touch), swiping movements and zoom gestures achieved by spreading the fingers or pinching them together
- Innovative handwriting recognition feature: Users are able to input letters, special characters and numbers in their normal handwriting, in any language available in the head unit
- 3 buttons located behind the touchpad allow fast and direct operation of important functions
- Clear haptic feedback when using the touchpad or keys



463 – Head-up display

Optional on all GLC models.

Delayed Availability



The Head-up Display at a glance:

- Key driver information at a glance, without the driver having to take their eyes off the road
- Projection of a virtual image measuring approx. 8.3 x 2.8 inches into the driver's field of vision, which appears to float around 78.7 inches in front of him/her above the bonnet
- Presentation of information in high-resolution and in color, making it clearly legible even on sunny days and at night
- Depending on equipment, the information displayed may include navigation tips, speed, speed limits or settings for cruise control or DISTRONIC PLUS, for example
- Height position of the image, brightness and displayed content can be changed individually via a menu in the instrument cluster



8.4" COMAND Screen

Optional on all GLC models.



Navigation, telephone, audio, video, internet – with the COMAND control and display system the driver is able to keep these and many other functions in view and under control. Information is shown in high resolution and in color on a large 8.4-inch media display. Operation via a touchpad is easy and intuitive.



What's New – Off Road Engineering Package

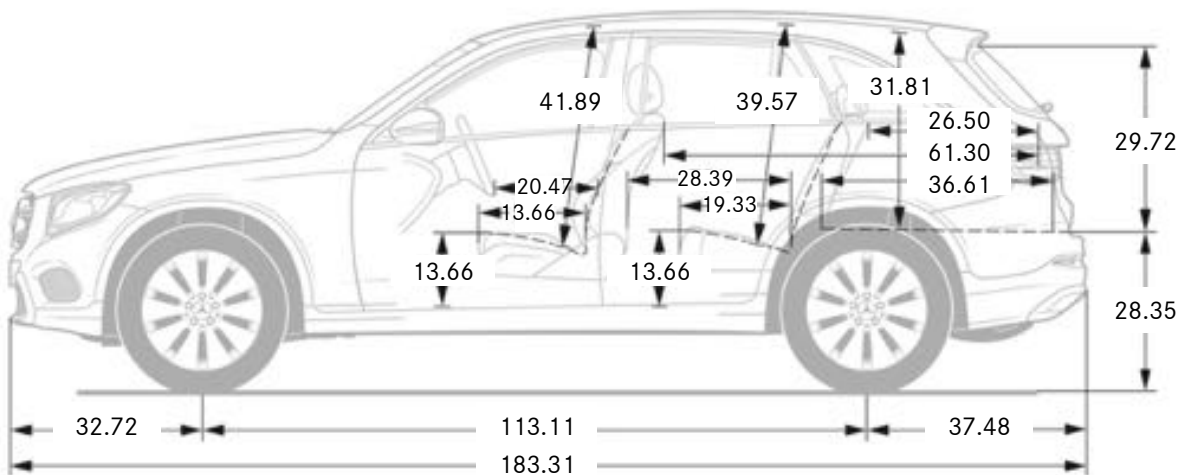
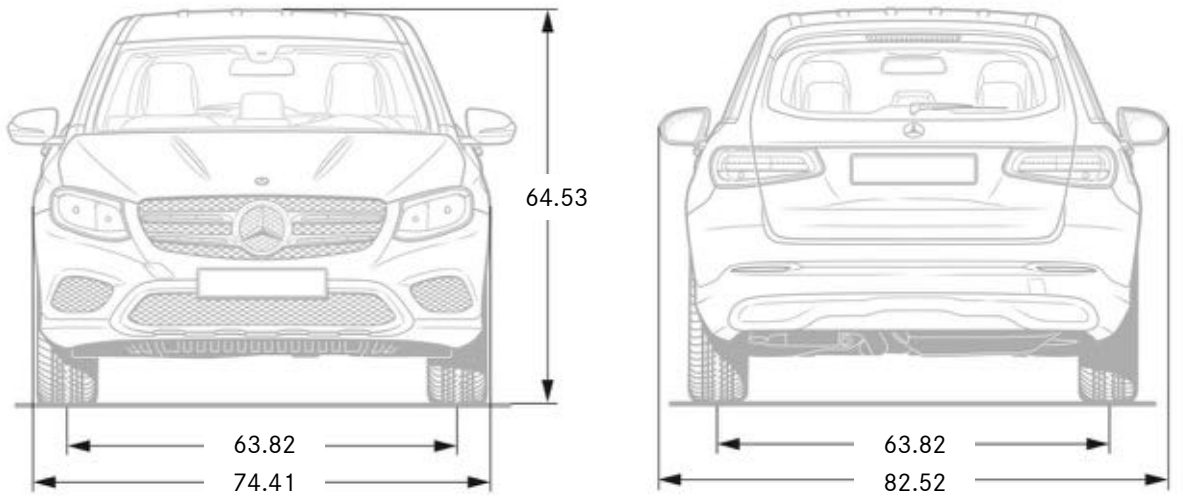
Optional GLC300 4MATIC only.



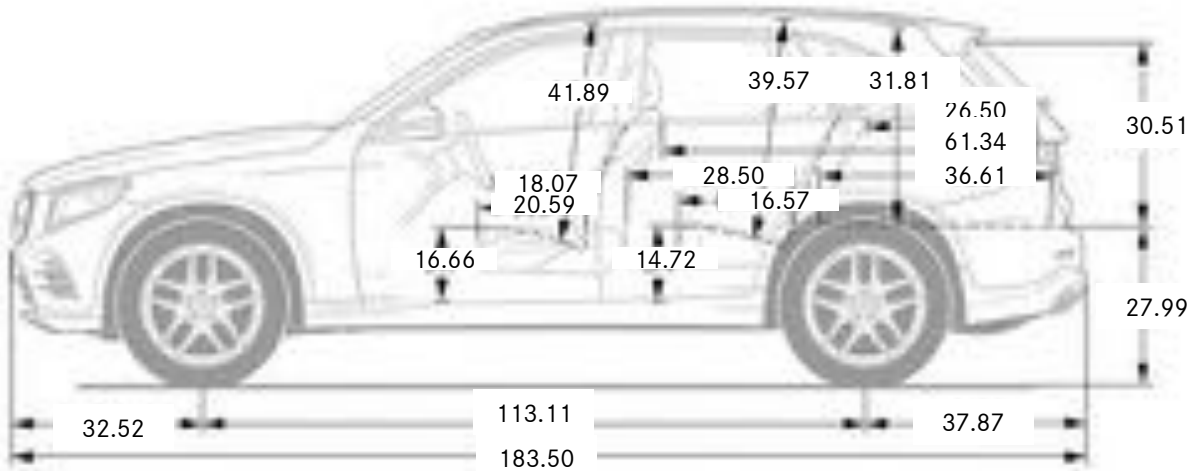
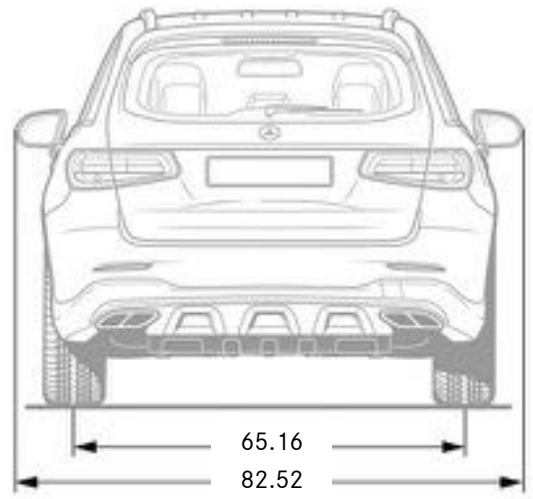
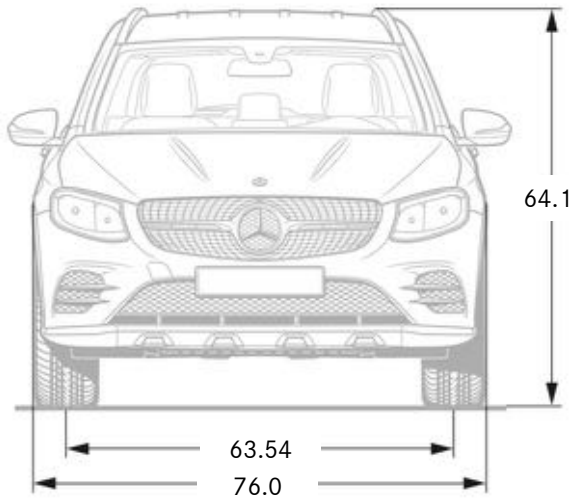
Features of the Off-Road Engineering package:

- Up to five off-road driving modes: Off-road, Incline, Slippery, Trailer and Rocking Assist
- Downhill Speed Regulation (DSR), located in the center console behind the Controller, centrally positioned in a chrome surround
- For easy off-road terrain such as dirt tracks, gravel or sand, in conjunction with AIR BODY CONTROL with ADS+ (489) the vehicle is raised by .79 inches
- GEMTEX underguard

What's new: Exterior/Interior Dimensions



What's new: Exterior/Interior Dimensions



Models

	Engine	Power	Torque	MSRP	Launch
GLC300 (253.948)	2.0L turbo-4	241 @ 5,500	273 @ 1,300- 4,000	\$39,150	Aug. 2016
GLC300 4M (253.949)	2.0L turbo-4	241 @ 5,500	273 @ 1,300- 4,000	\$41,150	Aug. 2016
AMG GLC 43 (253.964)	AMG enhanced 3.0L V6 Biturbo	362@ 6,000	384@ 2,000- 4,200	TBD	Oct. 2016



Standard Equipment Highlights

Performance/Handling

- 9 Speed Transmission
- DYNAMIC SELECT
- 2.0L turbo-4 (241 hp, 273 lb-ft)

Comfort/Convenience

- KEYLESS-START
- Power Driver Seat with Memory
- Rearview Camera
- Power Tailgate
- Power Folding Mirrors
- 7" Color Display
- Media Interface (iPod etc.)
- GARMIN Pre-Wiring

Safety/Security

- Collision Prev. Assist PLUS (CPA+)
- PRE-SAFE
- Crosswind Assist



Standard Equipment Highlights

Performance/Handling

- AMG enhanced 3.0L V6 Biturbo (362 hp, 384 lb-ft torque)
- AMG Sport Suspension based on Air Body Control
- 9G-TRONIC 9-speed Automatic Transmission
- AMG Performance 4MATIC
- AMG DYNAMIC SELECT
- 3-Stage ESP

Comfort/Convenience

- KEYLESS-GO
- 20" AMG light alloy wheels
- AMG Interior/Exterior
- AMG Sport Steering Wheel with Paddle Shifters
- Heated Front Seats
- MB-Tex covered Dashboard
- Red Seat Belts
- Aluminum Trim
- Black MB-Tex/DINAMICA Upholstery w/ Red Accents
- Rearview Camera
- Media Interface
- GARMIN Pre-Wiring
- SiriusXM Satellite Radio

Safety/Security

- Collision Prev. Assist PLUS (CPA+)
- PRE-SAFE
- Crosswind Assist
- Blind Spot Assist



Paints

Non-metallic Paints



040
Black



149
Polar White

Metallic Paints¹



197
Obsidian Black



775
Iridium Silver



796
Dakota Brown



890
Lunar Blue



896
Brilliant Blue



992
Selenite Grey

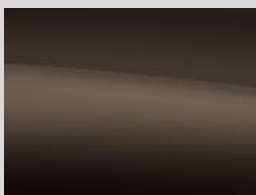


988
Diamond Silver

designo Metallic Paints



Metallic paint with high-quality effect pigments and exclusive color shades



271
Dakota Brown
Magno²



996
Cardinal Red³



799
Diamond White⁴

¹Additional charges: \$720

²Additional charges: \$3,950

³Additional charges: \$1,080

⁴Additional charges: \$1,515



Upholsteries

Standard on GLC300, 3004M

MB-
Tex



101 Black
Crystal Grey Headliner



114 Espresso Brown/Black
Black Headliner
(only i.c.w. Sport Pkg 321)



115 Silk Beige/Black
Beige Headliner

Optional on GLC300, 3004M

Leather



221 Black
Crystal Grey Headliner



224 Espresso Brown/Black
Black Headliner



225 Silk Beige/Esspresso
Brown
Beige Headliner



234 Saddle Brown/Black
Black Headliner

new



Upholsteries

Optional



designo
Exclusive Nappa Leather



P87 *designo*
Black/Black
Black Headliner

\$3,950

(only i.c.w. P02, P03, or P04)

P62 *designo*
Platinum White Pearl/Black
Black Headliner

\$3,950

(only i.c.w. P02, P03, or P04)



Upholsteries

AMG GLC 43 – Including AMG Performance Seats

MB-
Tex



641 Black MB-
Tex w/
DINAMICA and Red
Stitching - *Standard*



641+555 AMG Performance Seat, Black
MB-
Tex w/ DINAMICA and Red Stitching
(C-Class Image Shown)

Leather



221 Black
Crystal Grey Headliner



224 Espresso Brown/Black
Black Headliner



225 Silk Beige/Espresso
Brown
Beige Headliner



234 Saddle Brown/Black
Black Headliner



241 Black w/Red
Stitching



241+555 AMG
Performance Seat,
Black w/Red Stitching
(C-Class Image Shown)



Upholsteries

Optional



designo

Exclusive Nappa Leather



P87 *designo*
Black/Black
Black Headliner

\$TBD

(only i.c.w. P02, P03, or P04)

**Also Available with AMG
performance Seat**



P62 *designo*
Platinum White Pearl/Black
Black Headliner

\$TBD

(only i.c.w. P02, P03, or P04)

**Also Available with AMG
performance Seat**



Trims

H07 – Linden Wood



Standard on GLC300/3004M

731 – Burl Walnut Wood



Optional
n/c
n/a on AMG GLC43

736 – Natural Grain Black Ash Wood Trim



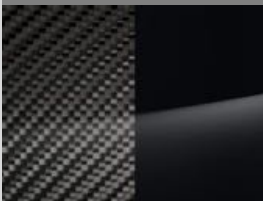
Optional
\$160

739 – Aluminum Trim



Standard on AMG GLC43

H73 – Carbon Fiber Trim/Piano Black Lacquer



Optional on AMG GLC43
\$TBD



Wheels

GLC300/ 4M

Standard



R31 – 5-spoke
All-Season & Extended
Mobility
18"

Optional



48R – 5-spoke
All-Season & Extended
Mobility
19"

Optional



638 – AMG Himalaya
Grey 5-twin-spoke
All-Season &
Extended Mobility
19"
(only i.c.w. Sport Pkg)



99R – AMG 5-twin-
spoke w/ Black inserts
All-Season &
Extended Mobility
19"
(only i.c.w. Night Pkg -
Standard)



698 – AMG multi-
spoke w/ Black inserts
High-Performance &
Extended Mobility
20"
(only i.c.w. Night Pkg -
Optional)



Wheels

AMG GLC 43

Standard



93R – Bi-Color AMG
Multi-spoke
R02/R66 or R01
20"
\$TBD

Optional



92R – AMG Multi-spoke
R02/R66 or R01
20"
\$TBD

Optional



650 – AMG Twin 5-spoke
R01
21"
\$TBD



684 – Bi-Colored
AMG Twin 5-spoke
R01
21"
\$TBD



Visual Equipment Differentiation

Headlights

Halogen Headlamps including integral LED daytime running lamps (Standard)



- Reflection-type halogen headlamps offer high light intensity and a long service life. The LED daytime running lamps are integrated into the headlamps

LED Intelligent Light System (640 - Optional)



The LED Intelligent Light System:

- All functions feature LED technology
- Automatic adaptation of headlamps to weather, lighting and driving conditions for ideal visibility in every situation
- variable low beam for country roads and motorways
- Automatically activated cornering lights
- Active light function for significantly better illumination in bends
- Distinctive look by day and night
- Long service life thanks to LED technology - no need for bulb changes
- Light color similar to that of daylight
- Low energy consumption
- Tail lights with LED technology



Visual Equipment Differentiation

Steering Wheels

443 – Heated Steering Wheel



- Optional on all models

On cold days, heating of the steering wheel rim very rapidly ensures cozy temperatures of the grip area and thus also warm hands. The temperature oscillates around 95°F.

Option Packages

P01 – Premium 1 Package

GLC300/4M: \$1,830

GLC43: std.

Requires Heated Front Seats (873) or Heated/Ventilated Front Seats (401)..

- 536 – SiriusXM® Satellite Radio
- 234 – Blind Spot Assist
- U80 – 115V AC power outlet
- 889 – KEYLESS-GO

P02 – Premium 2 Package

GLC300/4M: \$3,330

GLC43: \$1,500

Not with (P01) Premium 1 Package, (P03) Premium 3 Package, or (P04) Premium 4 Package

Includes all (P01) Premium 1 Package features plus:

- 632 – LED Headlamps
- 810 – Burmester Surround Sound System

P03 – Premium 3 Package

GLC300/4M: \$5,680

GLC43: \$3,850

Requires Heated Front Seats (873) or Heated/Ventilated Front Seats (401)

Not with (P01) Premium 1 Package, (P02) Premium 2 Package, or (P04) Premium 4 Package

Includes all (P02) Premium 2 Package features plus:

- 531 – COMAND Navigation w/ Single Disc
- 502 – Navigation Map Updates for 3 Years
- 5 years Traffic and Weather Services (provided by SiriusXM®)
- 448 – Touchpad
- 877 – Ambient Lighting (Including Doorsills)
- 30P – Storage Package

P04 – Premium 4 Package

GLC300/4M: \$8,480

GLC43: \$6,650

Requires Heated Front Seats (873) or Heated/Ventilated Front Seats (401)

Not with (P01) Premium 1 Package, (P02) Premium 2 Package, or (P03) Premium 3 Package

Includes all (P03) Premium 3 Package features plus:

- 233 – DISTRONIC PLUS with Steering Assist
- 237 – Active Blind Spot Assist *replaces (234) Blind Spot Assist*
- 238 – Active Lane Keeping Assist
- 253 – PRE-SAFE Plus
- P21 – AIR BALANCE
- 640 – Dynamic LED Headlamps
- 608 – Adaptive Highbeam Assist

Option Packages (cont.)

318 – Leather Seating Package \$2,250

Requires MB-Tex Dashboard (U09). GLC300/3004M Only

- 20X – Leather Upholstery
- 242 – Power Passenger Seat w/ Memory

321 – Sport Package \$1,900

GLC300/3004M Only

- P31 – AMG Exterior Sport Package
- U09 – MB-Tex Covered Dashboard & Upper Door Panels w/Top-Stitching
- 638 – 19” AMG Wheel
- 772 – AMG body styling

521 – Night Package \$1,050

GLC300/3004M Only

Requires 321 Sport Package

- P55 – Night Package Code
- 99R – 19” Black AMG Wheel
- 698 – 20” Black AMG Wheel

521 – AMG Night Package \$300

GLC43 Only

- P55 – Night Package Code
- 720 – Roof Rails in Black

996 – Advanced Parking Assist Package \$1,550

new

Requires P03 or P04 Package

- P44 – Parking Package w/ Surround View Camera
- P17 – Hands-free Package
- 235 – PARKTRONIC w/ Active Parking Assist

430 – Off Road Engineering Package \$2,100

GLC3004M Only

- 430 – Off Road Engineering Package
- 489 – AIR BODY CONTROL air suspension

Stand-Alone Options

Stand-Alone Options (GLC300/3004M)		
234	Blind Spot Assist <i>(std. on GLC43)</i>	\$550
313	Rear Door Roller Blinds	\$380
401	Heated/Ventilated Front Seats <i>Requires 318 Package</i>	\$1,080
413	Panorama sunroof <i>Standard Steel Roof</i>	\$1,480
443	Heated steering wheel <i>Available with these interiors only for GLC300/40 - 101, 115, 221, P87</i> <i>Available with these interiors only for GLC43 - 221, 225, 235, P62, P87</i>	\$250
463	Head-up Display <i>Requires P01 Package</i> <i>Delayed Availability</i>	\$990
489	AIR BODY CONTROL Air Suspension <i>(std. on GLC43)</i>	\$1,900
536	SiriusXM Radio <i>(std. on GLC43)</i>	\$460
550	Trailer Hitch - Class II Hitch <i>not i.c.w. 996 Advanced Parking Assist Package</i>	\$575
810	Burmester Surround Sound System	\$850
846	Brushed Aluminum Running Boards	\$670
872	Heated Rear Seats <i>Requires 873</i>	\$620
873	Heated Front Seats <i>(std. on GLC43)</i>	\$580
P21	Air Balance	\$350
48R	19" 5-Spoke Wheel <i>(n/a on GLC43)</i>	\$500



Stand-Alone Options

Stand-Alone Options (GLC43)		
242	Power Passenger Seat Memory	\$TBD
313	Rear Door Roller Blinds	\$TBD
401	Heated/Ventilated Front Seats <i>Requires 318 Package</i>	\$TBD
413	Panorama sunroof <i>Standard Steel Roof</i>	\$TBD
443	Heated steering wheel <i>Available with these interiors only for GLC43 - 221, 225, 235, P62, P87</i>	\$TBD
463	Head-up Display <i>Delayed Availability</i>	\$TBD
550	Trailer Hitch - Class II Hitch <i>not i.c.w. 996 Advanced Parking Assist Package</i>	\$TBD
555	AMG Performance Seats (available with upholsteries: 641, 241, P62, P87)	\$TBD
810	Burmester Surround Sound System	\$TBD
846	Brushed Aluminum Running Boards	\$TBD
872	Heated Rear Seats	\$TBD
P21	Air Balance	\$TBD
U17	Black Seat Belts	n/c
U78	AMG Performance Exhaust	\$TBD



Special Orders/Accessories

MB Accessories

03A	SD-Card for GARMIN® Map Pilot Navigation	\$625
00A*	Illuminated Star	\$550
068	Wheel Locks	\$140
070	Chrome Door Handles	\$TBD
105	Roof Spoiler	\$350

Special Order Options (additional charge of \$250)

875	Heated Windshield Washing System	\$TBD
581	3-Zone Climate Control	\$TBD

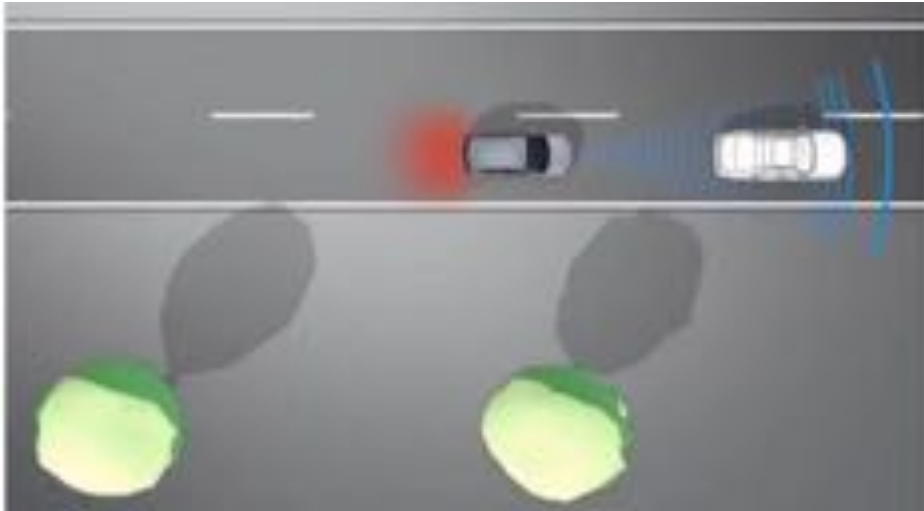
Specifications

	GLC300	GLC300 4M	AMG GLC43
Engine Configuration	2.0L Turbo I4	2.0L Turbo I4	AMG Enhanced 3.0L V6 Biturbo
Power (hp)	241	241	362
Torque (lb-ft)	273	273	384
Displacement (cc)	1,991	1,991	2,996
Acceleration 0-60mph (sec)	6.3	6.4	4.8
Fuel Economy (Cty/Hwy)	22/28	21/28	TBD
Top Speed (mph)	130 (lim.)	130 (lim.)	155 (lim.)
Fuel Requirement (Octane)	91	91	91
# Valves per cylinder	4	4	4
Compression	9.8 : 1	9.8 : 1	10.7 : 1
Transmission	9G-TRONIC	9G-TRONIC	9G-TRONIC
Transmission Speeds	9	9	9
Drive Configuration	Rear-Wheel Drive	All-Wheel Drive	All-Wheel Drive
Standard Front Wheel	8 J x 18	8 J x 18	8 J x 19
Standard Rear Wheel	8 J x 18	8 J x 18	9 J x 19
Standard Front Tire Size	235/60 R18	235/60 R18	235/55 R19
Standard Rear Tire Size	235/60 R18	235/60 R18	255/50 R19
Standard Tire Type	All Season	All Season	Summer
Fuel Tank Size (gallons)	17.4	17.4	17.4
Trunk Size (cubic feet)	56.5	56.5	56.5
Curb Weight (lbs)	3,891	4,001	TBD
Vehicle Length (in.)	183.3	183.3	183.5
Vehicle Width (in.)	74.4	74.4	76.0
Vehicle Height (in.)	64.5	64.5	64.1
Wheelbase	113.1	113.1	113.1
Track Width Front/Rear (in.)	63.9/63.7	63.9/63.7	64.5/ 65.2
Towing Capacity (lbs.)	3,500	3,500	3,500



Product Highlights: COLLISION PREVENTION ASSIST PLUS

Standard on all models

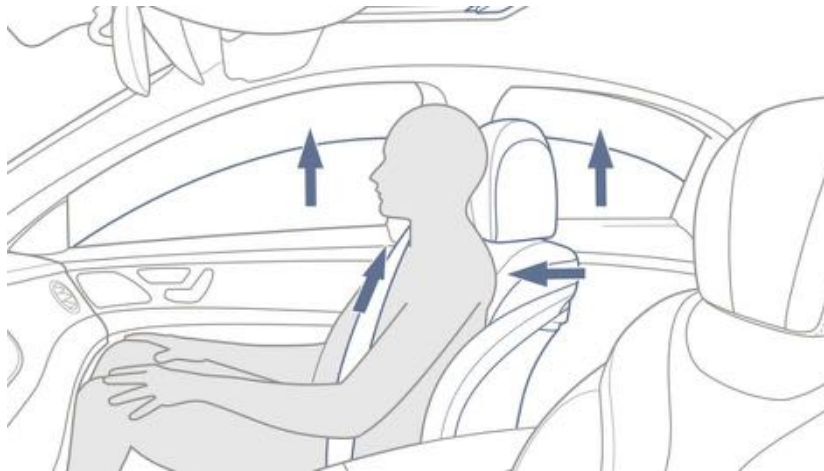


- Driving assistance system to lessen the danger of rear-end collisions and mitigate the consequences of accidents
- Combination of radar-based distance warning, assisted braking by Adaptive Brake Assist and autonomous partial braking
- Visual warning by means of a warning lamp in the instrument cluster when the safe distance to vehicles in front is too low within a speed range between 20 and 155 mph
- Additional audible warning if the distance diminishes rapidly
 - In the case of moving vehicles, in a speed range between 19 and 155 mph
 - In the case of stationary obstacles, in a speed range between 4 and 124 mph
- In case of emergency braking by the driver – and if necessary – increase in the brake pressure by Adaptive Brake Assist to prevent a collision
- Initiation of autonomous partial braking if the driver fails to react:
 - In the case of moving vehicles, in a speed range between 4 and 65 mph
 - In the case of stationary obstacles, in a speed range between 4 and 31 mph



Product Highlights: PRE-SAFE

Standard on all models



PRE-SAFE can be activated by the following situations:

- Hard braking: the deceleration required by the driver is much greater than the physically possible vehicle deceleration on a slippery surface (hydroplaning, ice, snow).
- Critical steering movements: rapid steering movements at high speeds, which indicate a panic response by the driver and can destabilize the vehicle

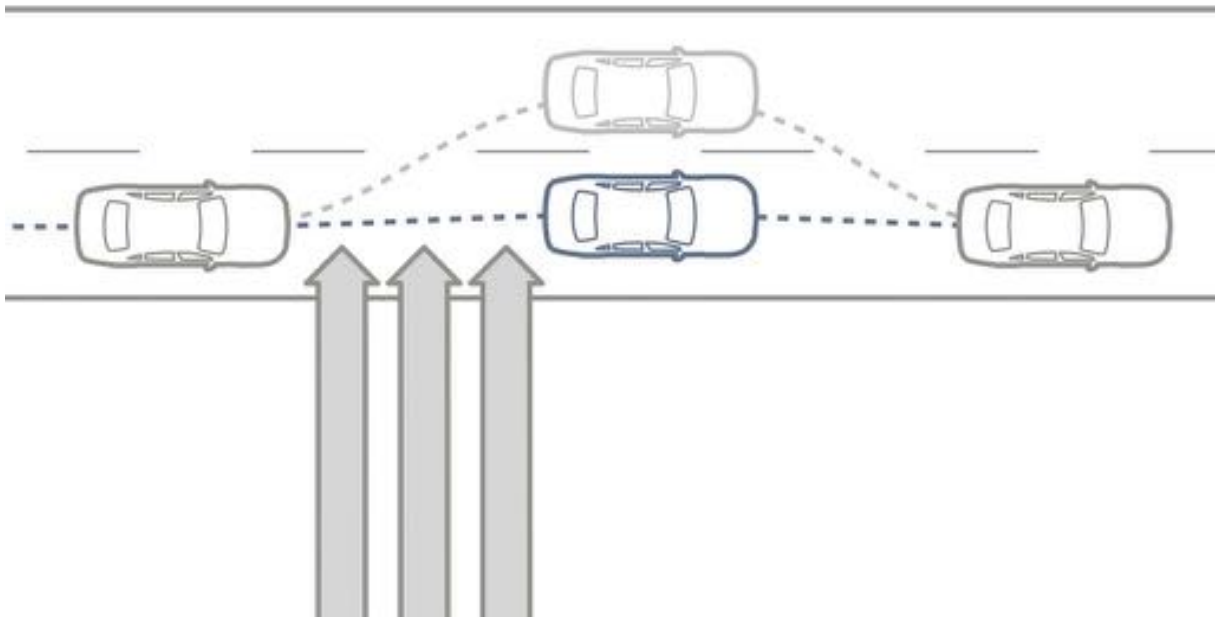
PRE-SAFE is able to initiate the following measures:

- Reversible preventive tensioning of the front seat belts by electric motors
- Open side windows and an open panoramic sunroof are almost completely closed when an imminent rollover is detected
- The front passenger seat is moved to a more favorable position for a possible impact. Repositioning depends on whether the occupant is wearing a seat belt or not, and whether a child seat has been detected.



Product Highlights: CROSSWIND ASSIST

Standard on all models



- Traditionally, strong gusts of wind may lead to sudden lateral drift of the vehicle
- Crosswind Assist aids the driver by reducing the vehicle's lateral drift substantially in windy driving conditions
- Crosswind Assist is integrated into the ESP® sensor system and enables the timely detection of gusts of crosswind
- Automatic brake intervention on the wheels on the side of the vehicle facing the wind results in a yaw motion which counteracts the crosswind
- Crosswind Assist substantially enhances the driver's sense of control, stability and safety
- Crosswind Assist is active from 50mph when driving straight ahead and on slight bends



Product Highlights: Active Parking Assist including PARKTRONIC

Optional on all models



- Reduced strain on driver by helping to find a parking space
- Convenient entering and leaving of parking spaces thanks to active steering and braking intervention
- Parking possible also in small parking spaces and in several maneuvers
- Computation of a suitable trajectory from the vehicle's current position
- PARKTRONIC provides the driver with visual and audible warnings of obstacles in front of or behind the vehicle, thereby helping to avoid damage when maneuvering
- Driver intervention possible at any time (Parking Assist is deactivated automatically)



Product Highlights: 4MATIC



A change of design has taken place with the combination of 4MATIC permanent all-wheel drive and 9G-TRONIC: the single-stage transfer case is now flange connected to the 9G-TRONIC as its own system. Previously the transfer case was integrated into the 7G-TRONIC PLUS. With the new add-on solution, it has been possible to combine the advantages of both designs and enhance performance



Product Highlights: AMG Performance 4MATIC

Standard on AMG GLC43



AMG Performance 4MATIC – more traction and driving pleasure in every weather

The performance-oriented all-wheel drive developed by Mercedes-AMG combines optimum traction, hallmark AMG driving dynamics and maximum driving pleasure. This is ensured by the clear torque distribution to the rear. Unlike in the standard model, Mercedes-AMG distributes the engine torque in a ratio of 31% to the front axle and 69% to the rear axle. In addition, AMG 4MATIC all-wheel drive increases driving safety and traction on wet or wintry road surfaces.



Product Highlights: AIR BODY CONTROL

Optional on GLC300/4M



- Multi-chamber air suspension combined with continuously adjustable damping to improve ride comfort and driving dynamics
- Vehicle characteristics can be varied from comfortable through to sporty using DYNAMIC SELECT switch
- "Comfort" and "Sport" settings for a more comfortable or stiffer, sportier setup
- Constant vehicle level irrespective of load thanks to pneumatic all-round self-levelling suspension
- Suspension level can be raised for poor surfaces and is automatically lowered at high speeds
- It is possible to lower the vehicle level by 1.6 inches to make it easier to load the luggage compartment. (Function activated by means of switch in luggage compartment side trim)

Product Highlights: AMG Sport Suspension based on AIR BODY CONTROL

Standard on AMG GLC43



AMG sport suspension based on AIR BODY CONTROL - better driving dynamics, more ride comfort

The multi-chamber air suspension system works in unison with a sporty, AMG-specific spring/damper setup and continuously variable damper control to ensure a very high standard of ride comfort and driving dynamics. The damping at each wheel is adapted to the current driving situation and road surface condition. This is done rapidly and precisely using separate valves for the compression and rebound of the dampers. A harder spring rate, for example when cornering and braking, effectively reduces rolling movements. With the settings "Comfort", "Sport" and "Sport+", the multi-chamber air suspension system can be given a more comfortable, sporty or very sporty setup. Thanks to the pneumatic all-round self-levelling suspension, the vehicle maintains a constant level irrespective of the load. The suspension level can be raised to increase ground clearance. At high speeds the suspension is automatically lowered, helping to reduce aerodynamic drag and further improve handling stability.

Product Highlights: Burmester Surround Sound System

Optional on all models



- 13 high-performance speakers precisely configured for the vehicle interior to ensure well-balanced and very dynamic music reproduction
- 9-channel DSP amplifier with a total output of 590 watts (7 x 50 W and 2 x 120 W) for maximum sound quality with very high volume reserves
- Frontbass technology with woofers integrated into the body shell for vibrant bass reproduction
- Combination of digital and analogue filter elements for the unique Burmester "feel-good sound"
- Sound optimization for the front and rear seats
- Noise compensation (VNC)
- Sound preset: surround function to generate virtual all-round sound
- Support for popular multi-channel formats such as Dolby Digital 5.1/DTS for example, for true surround sound (only in conjunction with COMAND Online)

Gallery

101 – Black MB-Tex



114 – Espresso Brown/Black MB-Tex



Gallery

234 – Saddle Brown Leather



225 – Silk Beige/Espresso Brown Leather



Gallery

P87 – *designo* Black/Black Leather
(Linden Wood Trim)



P87 – *designo* Black/Black Leather
(Linden Wood Trim)



Gallery

P62 – *designo* Platinum White/Black Leather
(Natural Grain Black Ash Wood Trim)



P62 – *designo* Platinum White/Black Leather
(Natural Grain Black Ash Wood Trim)



Gallery

877 - Ambient Lighting



877 - Ambient Lighting



Gallery

Standard OFF-ROAD Exterior (front)



Standard OFF-ROAD Exterior (rear)



Gallery

Optional Sport Package Exterior (front)



Optional Sport Package Exterior (front)



Gallery

Cargo Position



Load compartment with rear bench fully folded



Gallery

234 – Leather Saddle Brown/Black (left & center seat folded)



234 – Leather Saddle Brown/Black (right seat folded)



Gallery

AMG GLC43 (Front)



AMG GLC43 Exterior (Back)



Gallery

641 – MB-Tex/DINAMICA with Red Stitching



241 – Leather Black with Red Stitching

