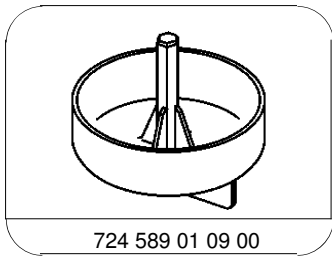
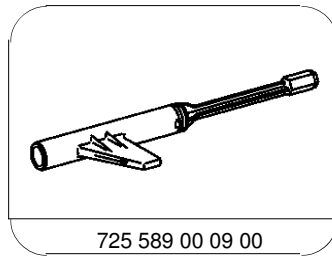


AR27.00-P-0270-03EWN	Check oil level in automatic transmission without ultrasound device, correct if necessary		
AD	Connect/disconnect diagnostic unit	Transmission 725.0 in model 238	AD00.00-P-2000-06LWO
AD	Connect STAR DIAGNOSIS and read out fault memory	Transmission 725.0 in model 166, 172, 207, 212, 218, 231, 292	AD00.00-P-2000-04A
AD	Connect STAR DIAGNOSIS and read out fault memory	Transmission 725.0 in model 205, 213, 217, 222	AD00.00-P-2000-04B
AD	Connect/disconnect diagnostic unit	Transmission 725.0 in model 238	AD00.00-P-2000-06LWO
AD	Connect STAR DIAGNOSIS and read out fault memory	Transmission 725.0 in model 166, 172, 207, 212, 218, 231, 292	AD00.00-P-2000-04A
AD	Connect STAR DIAGNOSIS and read out fault memory	Transmission 725.0 in model 205, 213, 217, 222	AD00.00-P-2000-04B

Transmission 725.0

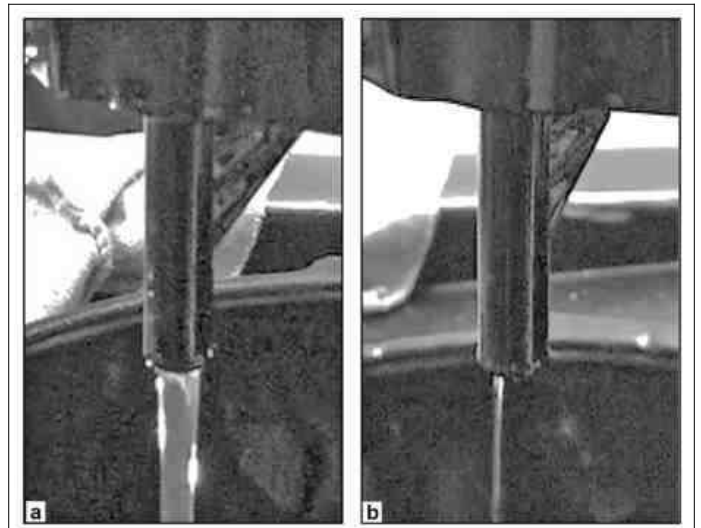


Socket wrench



Socket wrench

b Thin stream of oil



P27.00-2449-11

- 1 Connect vehicle diagnosis system and determine transmission oil temperature.

i Select Oil level measurement without ultrasound unit menu item in XENTRY.

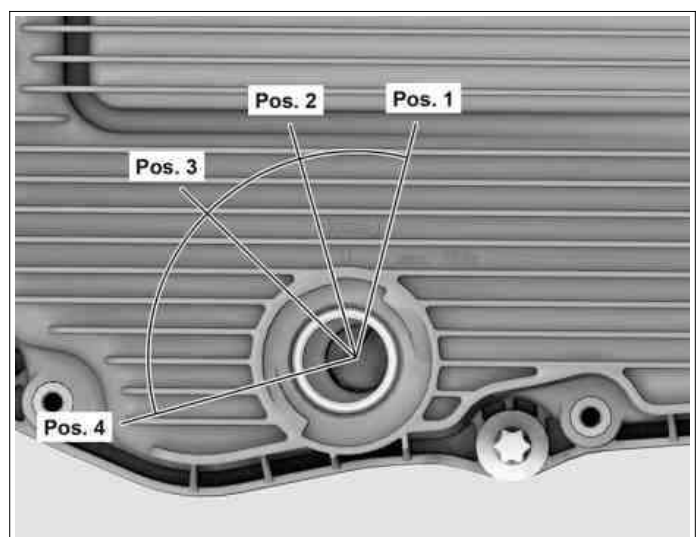
i Throughout the entire test, the parking brake must not be released and no other disturbance variables may be generated, that are not required for the work procedure. All of these factors lead to the measurement being aborted and a restart being required.

- 2 Allow transmission oil to cool to less than limit value.

If the limit value is exceeded.

i Transmission 725.0 in model 166, 292
Limit value is 55° C.

i Transmission 725.0 in model 172, 205, 207, 212, 213, 217, 218, 222, 231, 238, 253
Limit value is 35° C.



P27.00-2450-11

- i** The routine is resumed after the limit value has been undershot.
- 3 Remove quick-release fastener with **🔧** oil thrower.
- 4 Attach **🔧** socket wrench to oil pan and turn to position 1 (Pos. 1).
- 5.1 Transmission 725.0 in model 166, 292
Start the engine and heat transmission oil to 59° C.
- ⚠** Transmission 725.033 in model 166
It is absolutely essential that the transmission is in the S transmission mode. As a result, the combustion engine remains constantly on and the electric motor remains switched off.
Otherwise faulty measurements will be made when checking the oil level.
- 5.2 Transmission 725.0 in model 172, 205, 207, 212, 213, 217, 218, 222, 231, 238, 253
Start the engine and heat transmission oil to 39° C.
- ⚠** Transmission 725.007 in model 213
Transmission 725.017 in model 205, 213, 222
Transmission 725.047 in model 205, 213, 253
It is absolutely essential that the transmission is in the S transmission mode. As a result, the combustion engine remains constantly on and the electric motor remains switched off.
Otherwise faulty measurements will be made when checking the oil level.
- 6 Set **🔧** socket wrench to position 3 (Pos. 3).
- i** Transmission 725.0 in model 166, 292
Set **🔧** socket wrench to position 3 (Pos. 3) as soon as transmission oil temperature reaches 59° C.
- i** Transmission 725.0 in model 172, 205, 207, 212, 213, 217, 218, 222, 231, 238, 253
Set **🔧** socket wrench to position 3 (Pos. 3) as soon as transmission oil temperature reaches 39° C.
- 7.1 Transmission 725.0 in model 166, 292
Drain transmission oil until stream of oil has reduced to a thin stream of oil (b) and transmission oil temperature is 60° C.
- 7.2 Transmission 725.0 in model 172, 205, 207, 212, 213, 217, 218, 222, 231, 238, 253
Drain transmission oil until stream of oil has reduced to a thin stream of oil (b) and transmission oil temperature is 40° C.
- 8 Set **🔧** socket wrench to position 1 (Pos. 1) and detach.
- ⚠** Set **🔧** socket wrench to position 1 (Pos. 1) only.
Otherwise an undefined quantity of transmission oil will leak out when the quick-release fastener is reopened.
- 9 Screw in quick-release fastener.
- 10 Switch off engine.
- 11 Disconnect vehicle diagnosis system from vehicle.

Pos. 1 Position 1
Pos. 3 Position 3