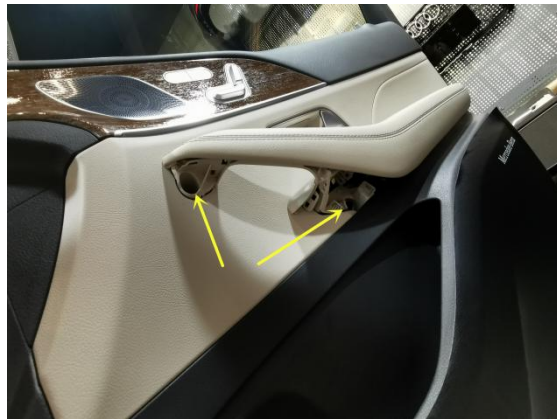


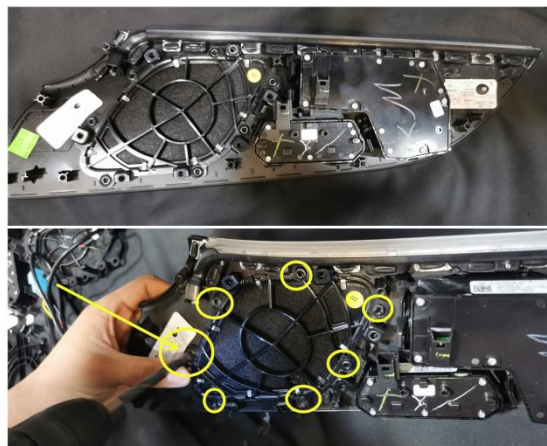
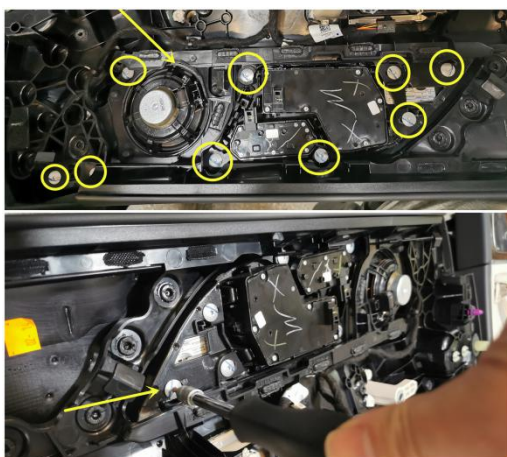
Mercedes-Benz GLE Car Lamp Installation Instructions

GLE midrange cover plate ambient light
installation process



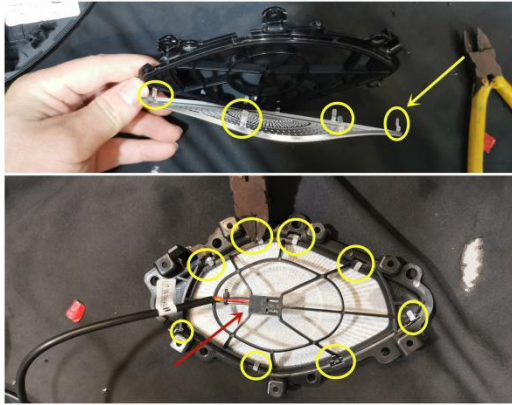
1. As shown in the figure, use a prying board to remove the cover plate from the door handle.

2. Use a screwdriver to remove the screws from the pull handle and then remove the door plate cover.

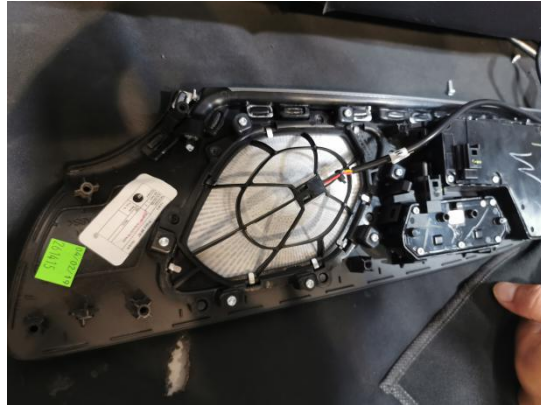


3. Use a screwdriver to remove the midrange decorative panel of the door as shown in the figure and remove the fixing screws marked in the figure.

4. Use an electric drill to break the solder joints in the mid-range area as shown in the figure on the removed mid-range decorative cover, and remove the mid-range cover.



5. Use pliers to remove the aluminum alloy cover of the midrange and fasten it to the midrange bracket with ambient light of this product.



6. Install the mid-range decorative panel with the mid-range cover plate and ambient light back to the door panel.



7. The midrange ambient light cable adapter plug is plugged into the original car plug to get power.



8. Put the removed door panel back on the door to restore, and the installation is complete.

GLE tweeter ambient light installation process



1. Use a pry board to remove the decorative panel of the screw hole, and remove it. Remove two screws and remove the door



2. Use a skid to remove the original car horn cover. (Not fixed by screws)



3. Plug the control box harness of our product at the position of the No. 6 plug of the original car.

4. Pass the product atmosphere lamp holder from the gap position of the original car tweeter, and insert it into the light guide strip of our product horn cover panel.



5. Install the horn cover to the original car and clamp it.

GLE backrest atmosphere light installation process



1. Insert the light guide strip of the backrest into the gap of the seat back, install lights on both sides of the light guide strip and tighten the screws on the lamp housing.



2. After the light guide strip is installed in place, plug the wire harness into the two gaps of the seat back to hide it.

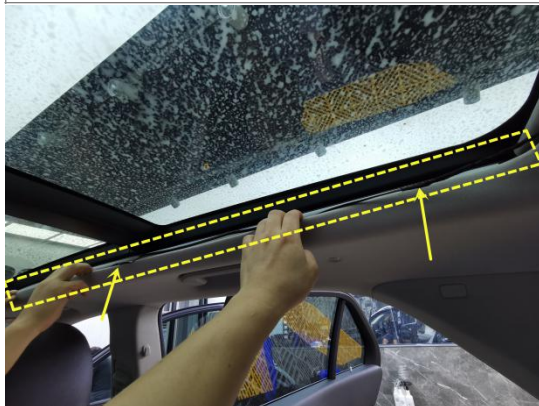
3. Connect the product back light harness to the foot socket light plug under the front seat.

GLE skylight ambient light installation process



1. Use double-sided adhesive to glue the light guide strip covered with silicone strip to the gap between the sunroof slide rail and the roof on both sides of the car roof

2. Put the light guide strip on the lamp holder, and fix the light guide strip and the lamp holder with screws



3. Insert the ambient light wire harness into the ambient light silicone strip installed between the sunroof guide rail and the ceiling



4. The effect of the end of the installation



5. Pass the ambient light harness out from above the B-pillar



6. Lay the ambient light wiring harness from the B-pillar along the front door frame



7. Remove the left front foot socket lamp

9. Note: After the sunroof ambient light is installed, it can be turned on only after the program "Ambient light lamp head bus addressing-Mercedes-Benz GLE class (19 models)"