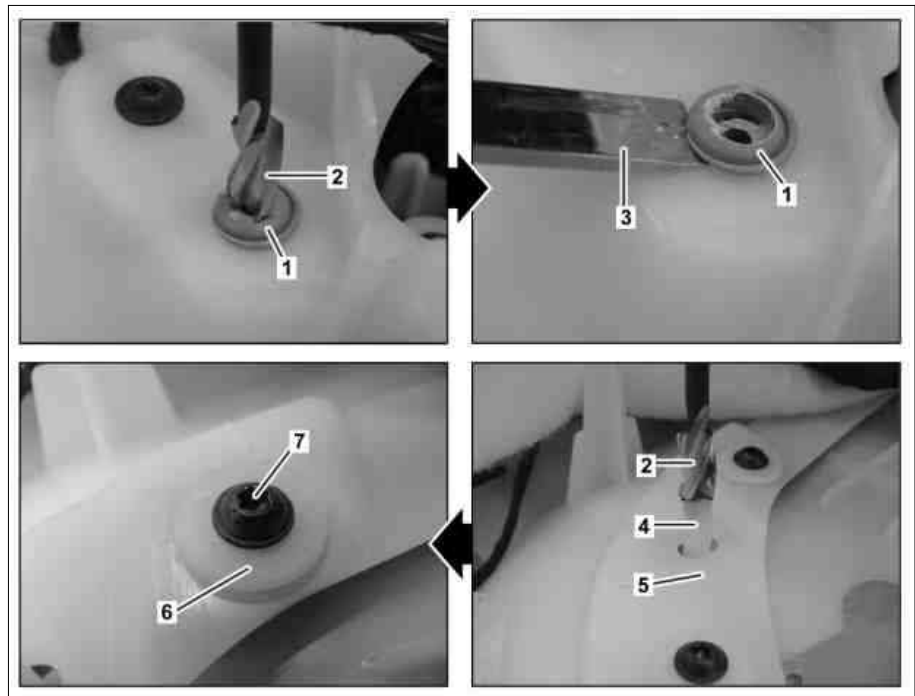


Model 117, 176
Model 166.0/8
except code Z04 (Light armoring)
except code Z05 (B5 armoring on special protection version)
Model 292

- 1 Plastic spot weld
- 2 Spot facer
- 3 Chisel
- 4 Mounting dome
- 5 Contact surface
- 6 Washer
- 7 Screw



P72.00-2249-06

The following notes must be observed when replacing plastic welded components of the door panel:

- Use commercially available cordless drill/driver.
- Use drill bit with Ø3.5 mm.
- Use spot facer (2) M4 as per DIN 373 with head Ø8 mm and pilot Ø3.3 mm.
- Use chisel (3) with a blade width of 10 mm, according to DIN 5139.
- Perform the drilling and milling process at high rpm and with low feed rate.
- Pre-drill the center of the plastic spot weld (1), into which plastic flowed during the welding process, so that the spot facer (2) can be guided via its pilot.
- Cut out plastic spot weld (1) with spot facer (2).
- Remove any remaining residues of the plastic spot weld (1) with the chisel (3).
- Mill off the mounting dome (4) of the new part inserted into the door panel with the spot facer (2) so that it is flush with the level of the contact surface (5).
- Fasten new part with washer (6) and screw/bolt (7) from door panel repair kit.