

Dealer Ordering Guide



Mercedes-Benz MY17 GLE (W166)

MY17 GLE-Class

An important note about this Guide:

The information presented in this guide is based on the most current information available and is intended for internal use only. Mercedes-Benz reserves the right to make changes at any time, without notice, to colors, materials, equipment, special specifications and models. Pricing may not yet be finalized for some models or options.

Due to variances among monitors and printers the colors that appear on your screen and printouts may not be exact.

For illustrative purposes, some images may show vehicles with European Specification.

Revision History

Date	Changes
04/08/2016	Initial Release
04/11/2016	Updated availability of Trim 734 on AMG models
04/12/2016	Updated code for Illuminated Running Boards

Table of Contents

- [What's new in MY17](#)
- [Models](#)
- [Standard Equipment](#)
- [Paints](#)
- [Upholsteries](#)
- [Trims](#)
- [Wheels](#)
- [Visual Equipment Differentiation](#)
 - [Steering wheels](#)
 - [Headlights](#)
 - [Brakes](#)
- [Option Packages](#)
- [Stand-Alone Options/Special Orders/Accessories](#)
- [Specifications](#)
- [Product Highlights](#)
- [Advantages over competition](#)
- [Gallery](#)

What's new: MY17 Overview

Paints

- Introduction of Selenite Grey (992) and Brilliant Blue (896)

Standard Equipment

- Addition of HERMES TCU (362)
- Rearview Camera

Optional Equipment

- New Package Structure



What's new: Premium Package Structure

MY 16

Premium 1 Package

- Navigation map updates for 3 years
- 8" COMAND/w Navigation
- SiriusXM Radio with 6 month service
- 115V AC power outlet
- Lane Tracking Pkg
- KEYLESS-GO
- Rear view camera

▪ **MSRP \$3,830**

Now
Standard

MY 17

Premium 1 Package

- COMAND w/ Map Updates
- Lane Keeping Assist Package
- 115V AC Power Outlet
- KEYLESS-GO
- SIRIUS XM Satellite Radio
- Smartphone Integration incl. Apple CarPlay® & Android Auto®
- harman/kardon Surround Sound System
- Blind Spot Assist

▪ **MSRP \$TBD**

New

Premium 2 Package

- Active LED Headlamps
- Adaptive Highbeam Assist
- Ambient Lighting
- Rear-Seat Center Armrest Pass-Through*
- Rear Side-Window Blinds
- Heated & Cooled Cupholders

▪ **MSRP \$TBD**

New

Premium 3 Package

- Driver Assistance Package
- Parking Assist Package

▪ **MSRP \$TBD**

New



Models

	Engine	Power	Torque	MSRP	Launch
GLE300d 4M (166.004)	2.1-Liter 4-Cylinder	201 hp	369 @ 1,600- 1,800	TBD	Summer 2016
GLE350 (166.058)	3.5-Liter 6-Cylinder	302 hp	273 @ 3,500- 5,250	TBD	Summer 2016
GLE350 4M (166.057)	3.5-Liter 6-Cylinder	302 hp	273 @ 3,500- 5,250	TBD	Summer 2016
GLE400 4M (166.056)	3.0-Liter Twin- Turbo 6-Cylinder	329 hp	354 @ 1,600- 4,000	TBD	Summer 2016
GLE550e 4M (166.063)	3.0-Liter 6-Cylinder	436 hp (combined)	479 (combined)	TBD	TBD
		114 hp (e-motor)	251 (e-motor)		
GLE63 (166.074)	Handcrafted AMG 5.5L V8 Biturbo Engine	550 hp	516 @ 1,750- 5,000	TBD	Summer 2016
GLE63 S (166.075)	Handcrafted AMG 5.5L V8 Biturbo Engine	577 hp	561 @ 1,750- 5,250	TBD	Summer 2016



Standard Equipment Highlights

Performance/Handling

- 7-SPEED AUTOMATIC TRANSMISSION

Comfort/Convenience

- Double sun visors
- Heated Front Seats
- KEYLESS START
- Driver memory seat
- Power tilt/telescoping steering column

Safety/Security

- COLLISION PREVENTION ASSIST PLUS
- Auto-dimming side & rear view mirrors
- Power folding mirrors
- 5years of mbrace service, with three new upgrade packages available



Paints

Non-metallic Paints



040
Black

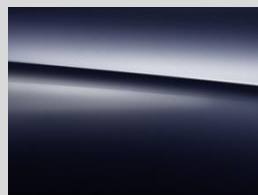


149
Polar White

Metallic Paints



197
Obsidian Black



890
Lunar Blue



775
Iridium Silver



792
Palladium Silver



796
Dakota Brown



988
Diamond Silver



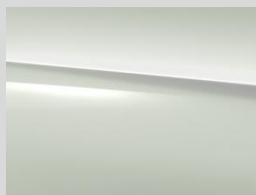
896
Brilliant Blue



992
Selenite Grey

designo Metallic Paints

Metallic paint with high-quality effect pigments and exclusive color shades



799
Diamond White



996
Cardinal Red



Upholsteries

Standard: GLE300d 4M, GLE350/4M

MB-**Tex**



111 Black
*Black or Crystal Grey
Headliner*



114 Espresso Brown
Porcelain Headliner



115 Ginger Beige/Espresso
Brown
Porcelain Headliner



121 Black
*Black or Crystal Grey
Headliner*
(only i.c.w. 318 Sport
Interior Pkg)



Upholsteries

Standard: GLE400 4M, GLE550e 4M; Optional: GLE300d, GLE350/4M (\$TBD); n/a on AMG Models

Leather



211 Black
*Black or Crystal Grey
Headliner*



215 Ginger Beige/Esspresso
Brown
Porcelain Headliner



224 Saddle Brown/Black
*Black or Crystal Grey
Headliner*



228 Crystal Grey/Black
*Black or Crystal Grey
Headliner*



245 Ginger Beige/Black
*Black or Porcelain
Headliner*



Upholsteries

Optional: GLE300d & GLE350/4M (\$TBD); GLE400 4M & GLE550e 4M (\$TBD)

Nappa Leather



811 Black Pearl/Black
Black or Crystal Grey
Headliner
(only i.c.w. 318 Sport
Interior Pkg)



855 Porcelain/Black
Black or Porcelain
Headliner
(only i.c.w. 318 Sport
Interior Pkg)



Upholsteries

Standard: AMG GLE63/ GLE63 S

Exclusive Nappa Leather



531 Black*
Black DINAMICA Headliner



534 Espresso Brown/ Black
Black DINAMICA Headliner



535 Porcelain/Black
*Black or Porcelain
DINAMICA Headliner*



541 Black w/Grey
Stitching**
Black DINAMICA Headliner

* only for AMG GLE63

** only for AMG GLE63 S

61U - Black DINAMICA Headliner

65U - Porcelain DINAMICA Headliner

*AMG Crest in Headrest included on GLE63 S, except when in combination with 399

**Grey Seat-Belts Standard. To omit, please add U17 - Black Seatbelts



Upholsteries

Optional: All models, n/a on AMG Models



designo
Exclusive Nappa Leather



954 *designo*
Espresso Brown
Porcelain DINAMICA
Headliner



955 *designo*
Porcelain/Black
Black DINAMICA
Headliner



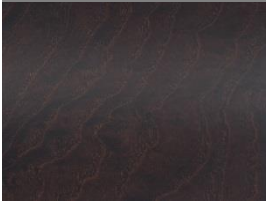
Trims

734 – Eucalyptus Wood



Standard on all models except AMG models
n/a on AMG models
Does not include wood cover over cupholder

H09 – Natural Grain Brown Ash Wood



Optional on all models
\$TBD

H21 – Black Piano Lacquer



Optional on all models
\$TBD

729 – Anthracite Poplar Wood



Std. on AMG models
Optional on all models
\$TBD

731 – Burl Walnut



n/c on all models
n/a on AMG models
available only w/leather



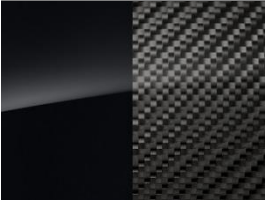
Trims

739 – Aluminum



n/c on all models
n/a on AMG models

H 10 – Carbon-Fiber/ Black Piano Lacquer



Only on AMG models
\$TBD



Wheels

Standard

Optional

Optional

GLE300d 4M



R41 – 10-spoke
All-Season
18"



R39 – 5-spoke
All-Season
19" (\$TBD)



29R – 5-spoke
All-Season
20" (\$TBD)

GLE350/ 4M



R39 – 5-spoke
All-Season
19"



29R – 5-spoke
All-Season
20" (\$TBD)

GLE400 4M/^{321 PKG}



681 – AMG 5-spoke
All-Season
20"



775 – AMG black 5-spoke
All-Season
20"

GLE550e 4M



65R – 5-twin-spoke
All-Season & Run-flat
19"



29R – 5-spoke
All-Season
20" (\$TBD)

MY17 GLE-Class



Wheels

Standard

Optional

Optional

AMG GLE63



688 – AMG Multi-Spoke High-Performance 20"



689 – AMG Cross-Spoke High-Performance 21"



692 – AMG Matte Black Cross-Spoke High-Performance 21"

AMG GLE63 S



689 – AMG Cross-Spoke High-Performance 21"



692 – AMG Matte Black Cross-Spoke High-Performance 21"

Visual Equipment Differentiation

Steering Wheels

280 – Nappa Leather Multifunction Steering Wheel



- Standard on all models except AMGs
- The 12 ergonomic control buttons on the left of the multifunction steering wheel in Nappa leather operate the display menus in the instrument cluster and the Audio 20/COMAND display. On the right, the driver can control the volume of audio devices, telephone and navigation system

289 – Wood/Leather Steering Wheel

\$TBD



- Optional on all models
- The combination of high-quality leather in the grip area and fine wood inserts at the top and bottom make this steering wheel a visual and tactile highlight. The wood finish is the same type as the selected wood trim

443 – Heated Steering Wheel

\$TBD



- Optional on all models
- On cold days, heating of the steering wheel rim very rapidly ensures cozy temperatures of the grip area and thus also warm hands. The switch for turning the heating on and off is positioned right next to the steering wheel. The temperature oscillates around 86 °F



Visual Equipment Differentiation

Steering Wheels

277 – Sport Steering Wheel



- Part of Interior Sport Package (318) on all models except AMG
- The 12 ergonomic control buttons on the Nappa leather multifunction sports steering wheel with flattened bottom section enable operation of the display menus of the instrument cluster and the Audio/COMAND display on the left. On the right, the driver can control the volume of audio devices, telephone and navigation system.

AMG Performance Steering Wheel in Nappa Leather*



- Standard on AMG GLE63 & Optional on GLE63 S
- For outstanding vehicle control, the AMG performance steering wheel in nappa leather features a flattened bottom section and perforated grip areas.

281 – AMG Performance Steering Wheel

\$TBD



- Standard on AMG GLE63 S & Optional on GLE63
- For even more grip when carrying out sporty driving maneuvers, the AMG Performance steering wheel in Nappa leather features a grip area upholstered in DINAMICA microfiber

*No Code Required. This steering wheel will come standard on the vehicle if another steering wheel is not selected.



Visual Equipment Differentiation

GLE550e Plug-in Hybrid



The GLE 550e features subtle elements for differentiation from its gasoline and diesel variants. “Hybrid Blue” elements will be found across the entire Mercedes-Benz Plug-in Hybrid lineup, including the S 550e.



Components:

- ① Badge with “PLUG-IN HYBRID” lettering on both driver and passenger front fender
- ② Blue accentuating rings in the headlamps (only with 319 lighting package)
- ③ Blue front brake calipers



Visual Equipment Differentiation Headlamps

Halogen Headlamps (Standard)/ LED tail lights (Standard)



- Halogen headlights including integral LED daytime running lamps

Intelligent LED Headlamps (Premium 2)/ LED tail lights (Standard)



Standard on GLE63/GLE63 S

Intelligent LED Headlamps:

- Automatic adjustment of headlamps to weather, lighting and driving conditions
- Automatically activated cornering lights
- Active light and enhanced fog lamp function
- LED technology
- Welcome Home function: the LED fiber optics in the headlamps light up in after opening the vehicle
- In conjunction with the Off-road engineering package, the LED Intelligent Light System features an off-road light function for the “Off-road+” transmission mode



Visual Equipment Differentiation Brakes

B06 – AMG Silver Painted Brake Calipers



- Standard on GLE63
- The brake calipers painted in a silver color with AMG logo convey a sense of value and sportiness

U70 – AMG Red Painted Brake Calipers



- Standard on GLE63 S
- Painting the brake calipers in red visually underscores the high performance of the brake system



Option Packages

P01 – Premium 1 Package

\$TBD

Standard on GLE400 4M, GLE550e 4M, GLE63 and GLE63 S

- 502 – Navigation updates for 3 years
- 531 – COMAND® Navigation with 8” Color Display
- 536 – SiriusXM® Satellite Radio with 6-month Trial
- U80 – 115V AC power outlet
- 22P – Lane Tracking Package
- 234 – Blind Spot Assist
- 476 – Lane Keeping Assist
- 889 – KEYLESS-GO®
- 16U – Apple CarPlay®
- 810 – harman/kardon LOGIC7® surround-sound system New

P02 – Premium 2 Package

New

\$TBD

Standard on GLE63 and GLE63 S

All features of Premium 1 Package, Plus:

- 282 – Rear-Seat Center-Armrest Pass-Through*
- 297 – Rear Side-Window Sunshades
- 311 – Heated and cooled front cupholders
- 608 – Adaptive Highbeam Assist
- 640 – Active full-LED headlamps
- 876 – Interior Ambient Lighting with Illuminated Door Sills



Option Packages Continued

P03 – Premium 3 Package

New

\$TBD

All features of Premium 1 & 2 Package, Plus:

- 23P – Driver Assistance Package Plus
- 233 – Distance Pilot DISTRONIC with Steering Pilot
- 237 – Active Blind Spot Assist
- 238 – Active Lane Keeping Assist
- 253 – PRE-SAFE PLUS
- 266 – DISTRONIC PLUS with Cross-Traffic Assist
- 268 – BAS PLUS
- 269 – BAS PLUS with Cross-Traffic Assist
- 271 – CMS Pedestrian
- 300 – PRE-SAFE Brake with Pedestrian Recognition
- 513 – Speed Limit Assist
- P44 – Parking Package
- 235 – Parking Pilot
- 501 – Surround View System

318 – Interior Sport Package

\$TBD

n/a on AMG models

- P29 – AMG Line Interior
- U26 – AMG floormats
- 244 – Sport front seats
- 277 – Sport steering wheel

321 – Sport Package

\$TBD

n/a on AMG models, Std. on GLE400 4MATIC

- P31 – AMG Styling
- 772 – AMG Exterior Sport Bodystyling
- 681 – 20” AMG 5-Spoke Titanium Grey Wheels



Option Packages Continued

430 – On-/ Off-road Package (GLE400 Only)

\$TBD

Requires AIRMATIC package 489 (SPC)

- 214 – Adaptive damping System
- 430 – On-&Off-road package
- 481 – Front Underguard

521 – Night Package

\$TBD

Requires Sport Package 321 except on AMG models

- P55 – Night Package Code
- 775 – 20” AMG 5-spoke wheel two tone in black (n/a on AMG models)

996 – Parking Assist Package

\$TBD

Standard on AMG models

- P44 – Parking Package
- 235 – PARKTRONIC with Active Parking Assist
- 501 – Surround view camera system

P62 – *designo* Exclusive nappa leather – porcelain/black

\$TBD

Only with designo Porcelain/Black upholstery (955) n/a on AMG models

- P63 – *designo* Package Code
- 61U – *designo* Black DINAMICA Headliner

P87 – *designo* Exclusive nappa leather – espresso brown

\$TBD

Only with designo Espresso Brown (954) n/a on AMG models

- P63 – *designo* Package Code
- 65U – *designo* Porcelain DINAMICA Headliner



Stand-Alone Options/Special Orders/Accessories

Stand-Alone Options

235	PARKTRONIC with Active Parking Assist	\$TBD
289	Wood/leather steering wheel	\$TBD
281	AMG Performance Steering Wheel	\$TBD
399	Multi-contour front seats with massage and comfort headrests	\$TBD
401	Heated/ventilated front seats <i>Std. on AMG models</i>	\$TBD
413	Panorama sunroof	\$TBD
443	Heated steering wheel	\$TBD
468	ACTIVE CURVE SYSTEM <i>n/a on GLE550e</i>	\$TBD
550	Trailer hitch	\$TBD
581	3-Zone Automatic Climate Control	\$TBD
811	Bang & Olufsen Sound System <i>n/a on GLE550e. AMG Models: Spare tire is replaced by TIREFIT when 811 is selected</i>	\$TBD
846	Brushed aluminum running boards	\$TBD
864	Rear seat entertainment	\$TBD
866	Rear seat entertainment pre-wiring <i>Std. on GLE400 and GLE550e</i>	\$TBD
872	Heated rear seats	\$TBD
874	MAGIC VISION CONTROL <i>n/a on GLE63 S</i>	\$TBD
883	Soft-close doors	\$TBD
P21	Air Ionization with air filter	\$TBD
489	AIRMATIC Air Suspension Package <i>Std. on AMG models, for cost option on GLE550e (highly recommended) & SPC all other GLE models.</i>	\$TBD

Stand-Alone Options/Special Orders/Accessories

Special Order Options (additional charge of \$250)

242	10-way power passenger seat with 3 position memory and 4-way lumbar <i>Requires P01; Std. on AMG models</i>	\$365
293	Rear side air bags	\$420
489	AIRMATIC Air Suspension Package <i>Not SPC on GLE550e, Std. on AMG models.</i>	\$1,610
841	Laminated Windshield & Front Side Window Glass <i>Std. on AMG models</i>	\$250
892	Rear lockable storage compartment <i>n/a on GLE63, GLE63 S, GLE550e</i>	\$150
942	Cargo management system <i>n/a on GLE550e. Not SPC on AMG models</i>	\$300
U09	MB-TEX wrapped dashboard <i>Std. on GLE400 and GLE550e</i>	\$450

MB Accessories Program

00A	Illuminated Star	\$TBD
068	Wheel Locks	\$TBD
02A	Illuminated side running boards	\$TBD
980	Accessory chrome package	\$TBD



Exclusive AMG Options

Stand-Alone Options

B14	Carbon Fiber Engine Cover <i>Std. on GLE63 S</i>	\$TBD
U21	AMG Performance Exhaust	\$TBD



Specifications

	GLE300d 4M	GLE350	GLE350 4M	GLE400 4M
Engine Configuration	2.1L I4	3.5L V-6	3.5L V-6	3.0L V-6
Power (hp) @ 5,550 rpm	201	302	302	329
Electric Motor (hp) System Output (hp)	n/a			
Torque (lb-ft)	369 @ 1,600-1,800 rpm	273 @ 3,500-5250 rpm	273 @ 3,500-5250 rpm	354 @ 1,600-4,000 rpm
Electric Motor (lb-ft) System Torque (lb-ft)	n/a			
Displacement (cc)	2,143 cc	3,498 cc	3,498 cc	2,996
Acceleration 0-60mph (sec)	8.9 sec.	7.5 sec.	7.5 sec.	6.0
Fuel Economy (Cty/Hwy/Com)	tbd	Tbd	tbd	tbd
Top Speed (mph)	130 (lim.)	130 (lim.)	130 (lim.)	130 (lim.)
Fuel Requirement (Octane)	91	91	91	91
# Valves per cylinder	4	4	4	4
Compression	16.2 : 1	12.0 : 1	12.0 : 1	10.5 : 1
Transmission	7G-TRONIC PLUS	7G-TRONIC PLUS	7G-TRONIC PLUS	7G-TRONIC PLUS
Transmission Speeds	7	7	7	7
Drive Configuration	All-Wheel Drive	Rear-Wheel Drive	All-Wheel Drive	All-Wheel Drive
Standard Front Wheel	8 J x 18	8.5 J x 19	8.5 J x 19	9 J x 20
Standard Rear Wheel	8 J x 18	8.5 J x 19	8.5 J x 19	9 J x 20
Standard Front Tire Size	255/55 R18	255/50 R19	255/50 R19	265/45 R20
Standard Rear Tire Size	255/55 R18	255/50 R19	255/50 R19	265/45 R20
Standard Tire Type	All-Season	All-Season	All-Season	All-Season
Fuel Tank Size (gallons)	24.6	24.6	24.6	24.6
Trunk Size (cubic feet)	tbd	tbd	tbd	tbd
Curb Weight (lbs)	tbd	tbd	tbd	tbd
Vehicle Length (in.)	189.1	189.1	189.1	189.1
Vehicle Width (in.)	84.3	84.3	84.3	84.3
Vehicle Height (in.)	70.7	70.7	70.7	70.7
Wheelbase	114.8	114.8	114.8	114.8
Track Width Front/Rear (in.)	64.9/65.0	64.9/65.2	64.9/65.2	64.4/65.0
Towing Capacity	7200 lbs	6615 lbs	7200 lbs	7200 lbs



Specifications

	GLE550e 4M	GLE63	GLE63 S
Engine Configuration	3.0L V-6	Handcrafted AMG 5.5L V8 Biturbo Engine	Handcrafted AMG 5.5L V8 Biturbo Engine
Power (hp) @ 5,550 rpm	436hp (combined)	550	577
Electric motor (hp) System output (hp)	114	n/a	
Torque (lb-ft)	479 @ 1,600-4,000 rpm (combined)	516 @ 1,750-5,000 rpm	561 @ 1,750-5,250 rpm
Electric Motor (lb-ft) System Torque (lb-ft)	251 479	n/a	
Displacement (cc)	2,996	5,461 cc	5,461 cc
Acceleration 0-60mph (sec)	5.3 sec.	4.2 sec.	4.1 sec.
Fuel Economy (Cty/Hwy/Com)	tbd	13/17/15	13/17/15
Top Speed (mph)	152 (80 in pure electric)	155 (lim.)	174 (lim.)
Fuel Requirement (Octane)	91	91	91
# Valves per cylinder	4	4	4
Compression	10.5 : 1	10.0 : 1	10.0 : 1
Transmission	7G-TRONIC PLUS	AMG SPEEDSHIFT PLUS 7G-TRONIC	AMG SPEEDSHIFT PLUS 7G-TRONIC
Transmission Speeds	7	7	7
Drive Configuration	All-Wheel Drive	All-Wheel Drive	All-Wheel Drive
Standard Front Wheel	8.5 J x 19	9 J x 20	10 J x 21
Standard Rear Wheel	8.5 J x 19	9 J x 20	10 J x 21
Standard Front Tire Size	255/50 R19	265/45 R20	295/35 R21
Standard Rear Tire Size	255/50 R19	265/45 R20	295/35 R21
Standard Tire Type	All-Season	High-Performance	High-Performance
Fuel Tank Size (gallons)	21.1	24.6	24.6
Trunk Size (cubic feet)	tbd	tbd	Tbd
Curb Weight (lbs)	tbd	5203	5225
Vehicle Length (in.)	189.7	191	191
Vehicle Width (in.)	84.3	84.3	84.3
Vehicle Height (in.)	70.7	69.4	69.3
Wheelbase	114.8	114.8	114.8
Track Width Front/Rear (in.)	tbd	66.4/67.1	65.9/66.7
Towing Capacity	4410 lbs	7198 lbs	7198 lbs



Product Highlights: Plug-in Hybrid



Who would benefit from a GLE550e 4MATIC Plug-in Hybrid?

- Customers who drive a high proportion of city driving or in those living high-traffic areas will benefit from the Hybrid's ability to drive up to 80mph in full-electric mode, or at low speeds even with a depleted battery.

What is the advantage of charging the GLE 550e 4MATIC?

- With a fully charged battery, the e-motor works most efficiently together with the turbocharged V6 to provide excellent fuel economy. The e-motor can drive the GLE550e completely on electric and provide extra boosting power to accelerate on the highway.

Key features

- **Powerful combined horsepower and torque with 4MATIC**, 436 hp with 479lb-ft of torque
- **Programmable climate control** to turn on the heat or air conditioning with the key, or setting a schedule
- **Intelligent Hybrid systems** which takes navigation data and the traffic situation from COMAND to drive as efficiently as possible
- **Radar Based Recuperation** analyzes the road ahead and determines the best possible use for recuperating energy back into the battery



Product Highlights: COLLISION PREVENTION ASSIST PLUS

Standard on all models

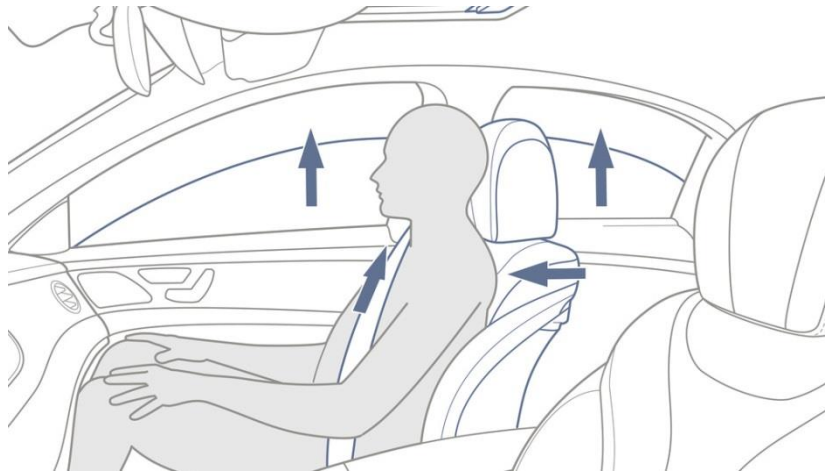


- Driving assistance system to lessen the danger of rear-end collisions and mitigate the consequences of accidents
- Combination of radar-based distance warning, assisted braking by Adaptive Brake Assist and autonomous partial braking
- Visual warning by means of a warning lamp in the instrument cluster when the safe distance to vehicles in front is too low within a speed range between 20 and 155 mph
- Additional audible warning if the distance diminishes rapidly
 - In the case of moving vehicles, in a speed range between 19 and 155 mph
 - In the case of stationary obstacles, in a speed range between 4 and 124 mph
- In case of emergency braking by the driver – and if necessary – increase in the brake pressure by Adaptive Brake Assist to prevent a collision
- Initiation of autonomous partial braking if the driver fails to react:
 - In the case of moving vehicles, in a speed range between 4 and 65 mph
 - In the case of stationary obstacles, in a speed range between 4 and 31 mph



Product Highlights: PRE-SAFE

Standard on all models



PRE-SAFE can be activated by the following situations:

- Hard braking: the deceleration required by the driver is much greater than the physically possible vehicle deceleration on a slippery surface (aquaplaning, ice, snow).
- Critical steering movements: rapid steering movements at high speeds, which indicate a panic response by the driver and can destabilize the vehicle

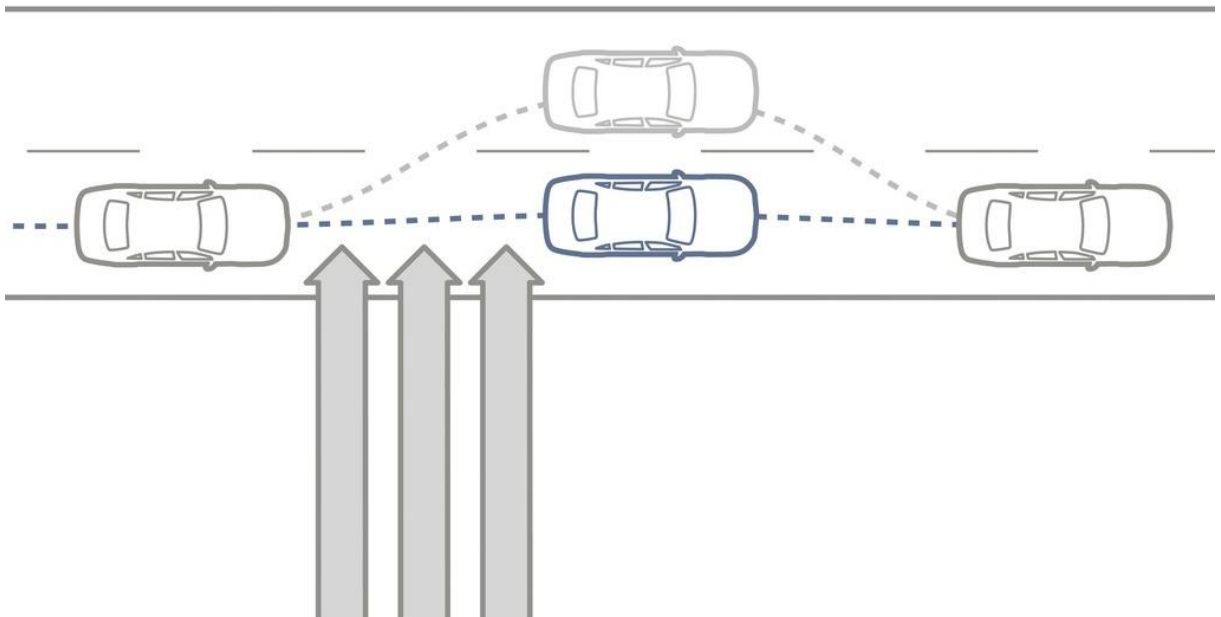
PRE-SAFE is able to initiate the following measures:

- Reversible preventive tensioning of the front seat belts by electric motors
- Open side windows and an open panoramic sunroof are almost completely closed when an imminent rollover is detected
- The front passenger seat is moved to a more favorable position for a possible impact. Repositioning depends on whether the occupant is wearing a seat belt or not, and whether a child seat has been detected.



Product Highlights: CROSSWIND ASSIST

Standard on all models

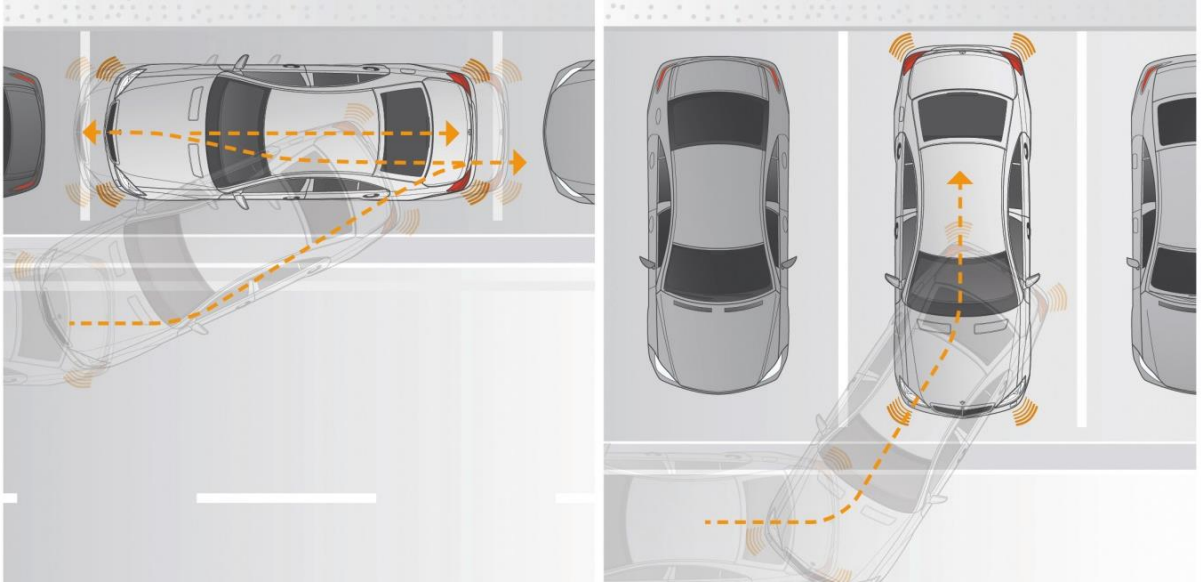


- Traditionally, strong gusts of wind may lead to sudden lateral drift of the vehicle
- Crosswind Assist aids the driver by reducing the vehicle's lateral drift substantially in windy driving conditions
- Crosswind Assist is integrated into the ESP® sensor system and enables the timely detection of gusts of crosswind
- Automatic brake intervention on the wheels on the side of the vehicle facing the wind results in a yaw motion which counteracts the crosswind
- Crosswind Assist substantially enhances the driver's sense of control, stability and safety
- Crosswind Assist is active from 50mph when driving straight ahead and on slight bends



Product Highlights: Active Parking Assist including PARKTRONIC

Optional on all models



- At speeds up to 22 mph, Active Parking Assist automatically searches for suitable parking spaces (perpendicular & parallel) via ultrasonic sensors
- If the vehicle speed is below 19mph, the system indicates that it has found a suitable parking space by displaying a "P" with a direction arrow in the multifunction display
- Active Parking Assist takes over control of the steering wheel if the driver selects reverse gear and confirms the intention to park in the suggested space via the multifunction steering wheel
- The driver only needs to operate the accelerator and brake pedal, Active Parking Assist smoothly steers the car into the parking space
- An automatic braking function is active during automatic parking which stops the vehicle when a certain distance from the end of the parking space has been reached, or an obstacle is detected



Product Highlights: AIRMATIC Package

Standard on GLE63/GLE63 S; Optional on rest; **Recommended for GLE550e**



The combination of AIRMATIC air suspension and the Adaptive Damping System (ADS) reduces road roar and tire vibration characteristics, whilst also ensuring excellent driving dynamics both on and off-road.

- The damping at each wheel is adapted to the current driving situation and road surface condition
- Where the dynamic driving demands are high, for example during fast cornering, the spring rate hardens automatically, so reducing rolling and pitching
- With the "Comfort" and "Sport" settings, AIRMATIC can be configured for more comfort or sportiness
- In order to increase off-road capability, this can be raised by up to 2.4 in (by up to 3.5 in when combined with the optional ON&OFFROAD package (430))
- Overall, a maximum ground clearance of 9.1 in is therefore possible (10.3 in with the ON&OFFROAD package (430))



Competitive advantages of the GLE

BMW X5 xDrive 35i



- 19" wheels
- DYNAMIC SELECT Suspension
- COLLISION PREVENTION ASSIST
- ATTENTION ASSIST
- mbrace2

Acura MDX



- 19" wheels
- DYNAMIC SELECT Suspension
- COLLISION PREVENTION ASSIST
- ATTENTION ASSIST
- mbrace2

Lexus RX 350



- 19" wheels
- DYNAMIC SELECT Suspension
- COLLISION PREVENTION ASSIST
- ATTENTION ASSIST
- mbrace2



Gallery

215 – Ginger Beige/Espresso Brown Leather
(Burl walnut trim 731* & Wood/leather steering wheel 289*)



228 – Crystal Grey/Black Leather
(Brown open pore ash wood trim H09* & Heated steering wheel 443*)



Gallery

Rear seats



Folding rear seat backrests



Gallery

Cargo position



Luggage compartment with rear bench seat fully folded



Gallery

GLE550e 4MATIC Dakota Brown

