

# Dealer Ordering Guide



## Mercedes-AMG MY17 GLE Coupe (C292)

**PRELIMINARY.  
DOCUMENT SUBJECT TO  
CHANGE.**

## **An important note about this Guide:**

The information presented in this guide is based on the most current information available and is intended for internal use only. Mercedes-Benz reserves the right to make changes at any time, without notice, to colors, materials, equipment, special specifications and models. Pricing may not yet be finalized for some models or options.

Due to variances among monitors and printers the colors that appear on your screen and printouts may not be exact.

For illustrative purposes, some images may show vehicles with European Specification.

## Revision History

Date	Changes
4/8/2016	Initial Release
5/4/2016	Updated availability for Brilliant Blue and Selenite Grey
5/24/2016	Updated code for the Accessory Chrome Package
6/1/2016	Addition of Panorama Sunroof as standard equipment
6/13/2016	Removal of B14 – Carbon Fiber Engine Cover from stand alone options. Std. on GLE63S & n/a on GLE43
7/5/2016	Addition of preliminary pricing & spare wheel availability
7/22/2016	Updated Pricing
8/23/2016	Updated nomenclature

## Table of Contents

- [What's new in MY17](#)
- [Models](#)
- [Standard Equipment](#)
- [Paints](#)
- [Upholsteries](#)
- [Trims](#)
- [Wheels](#)
- [Visual Equipment Differentiation](#)
  - [Steering wheels](#)
  - [Headlights](#)
  - [Brakes](#)
- [Option Packages](#)
- [Stand-Alone Options/Special Orders/Accessories](#)
- [Specifications](#)
- [Product Highlights](#)
- [Gallery](#)

## What's New: MY17 Overview

### Paints

- Introduction of Selenite Grey (992) and Brilliant Blue (896)

### Standard Equipment

- Addition of 4G LTE Connection Speeds (362)

### Optional Equipment

- New Package Structure



# What's New: Premium Package Structure

## MY 16

### Premium 1 Package

- Lane Keeping Assist Package
- 115V AC Power Outlet
- Blind Spot Assist
- harman/kardon Surround Sound System
- KEYLESS-GO®
- Rear-Seat Center-Armrest Pass-Through
- Panorama Roof

▪ **MSRP \$3,500**

**Removed  
from P1**

## MY 17

### Premium 1 Package

- Lane Keeping Assist Package
- 115V AC Power Outlet
- Blind Spot Assist
- harman/kardon Surround Sound System
- KEYLESS-GO
- COMAND w/ Map Updates
- SIRIUS XM Satellite Radio

**New**

▪ **Standard on all models**

### Premium 2 Package

- Ambient Lighting
- Rear-Seat Center Armrest Pass-Through
- Heated & Cooled Cupholders
- **MSRP \$650 on GLE43; Std. on GLE63S**

### Premium 3 Package

All contents of P02, plus:

- Distance Pilot DISTRONIC® with PRE-SAFE Brake
- Active Blind Spot Assist
- Active Lane Keeping Assist
- Steering Pilot
- Parking Package
  - Parking Pilot
  - Surround View System
- **MSRP \$2,250 on GLE43; \$1,600 on GLE63S**

# What's New: 521 – AMG Night Package

## AMG GLE63 S



Striking design elements in black underscore the expressive character of the vehicle– from the louvre in the radiator trim via the exterior mirrors through to the twin tailpipe trim elements

Features of the AMG Night Styling Package:

- ① Lamella in the radiator grill in high-gloss black
- ② A-wing insert in front and rear apron in black
- ③ Exterior mirrors in high-gloss black
- ④ Beltline trim strip and weatherstrip in black
- ⑤ Twin tailpipe trim elements in black

**\*Black wheel no longer included in the AMG Night Styling Package, to allow customers their choice.**



## Models

	Engine	Power	Torque	MSRP	Launch
AMG GLE43 Coupe (292.364)	AMG-enhanced 3.0L V6 Biturbo Engine	362 hp	384 @ 1,800- 4,000	\$69,650	July 2016
AMG GLE63 S Coupe (292.375)	Handcrafted AMG 5.5L V8 Biturbo Engine	577 hp	561 @ 1,750- 5250	\$110,650	July 2016





## Standard Equipment Highlights

### Performance/Handling

- AMG-enhanced 9G-TRONIC Transmission (GLE43)
- AMG SPEEDSHIFT PLUS 7G-TRONIC Transmission (GLE63 S)
- AMG DYNAMIC SELECT
- AMG Performance 4MATIC®
- AMG Sport Suspension based on AIRMATIC with ADS+
- ACTIVE CURVE SYSTEM (GLE63 S)
- AMG High-Performance Braking System (GLE63 S)

### Comfort/Convenience

- COMAND Navigation w/ Map Updates
- KEYLESS START
- Heated Front Seats
- mbrace services with 5 years of mbrace Connect
- Rearview Camera
- Smartphone Integration
  - Apple CarPlay™ & Android Auto
- Power Liftgate
- Panorama Roof

### Safety/Security

- Blind Spot Assist
- Lane Keeping Assist
- Active Brake Assist
- Auto-dimming mirrors
- Power folding mirrors
- Crosswind Assist
- Active LED Headlamps



# Paints

## Non-metallic Paints



040  
Black

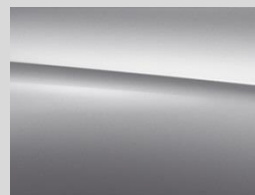


149  
Polar White

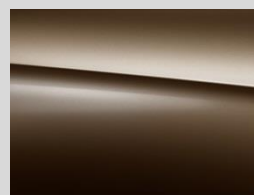
## Metallic Paints<sup>1</sup>



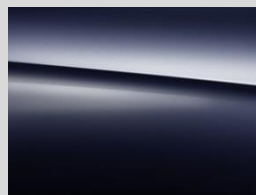
197  
Obsidian Black



775  
Iridium Silver



796  
Dakota Brown



890  
Lunar Blue



896  
Brilliant Blue



992  
Selenite Grey



988  
Diamond Silver

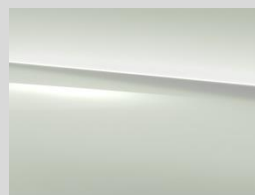
## designo Metallic Paints



Metallic paint with high-quality effect pigments and exclusive color shades



996  
Cardinal Red<sup>2</sup>



799  
Diamond White<sup>3</sup>

<sup>1</sup>Additional charges: GLE43: \$720; GLE63S: \$0

<sup>2</sup>Additional charges for 996: GLE43: \$1,080; GLE63 S: \$360

<sup>3</sup>Additional charges for 799: for GLE43 \$1,515; GLE63 S: \$795



# Upholsteries

## Standard: AMG GLE43<sup>1</sup>

MB-  
Tex



121 Black  
*Black or Crystal Grey  
Headliner*



135 Ginger Beige/Black  
*Black or Porcelain  
Headliner*



138 Crystal Grey/Black  
*Black or Crystal Grey  
Headliner*

## Optional: AMG GLE43 (\$1,620)<sup>2</sup>

Leather



211 Black  
*Black or Crystal Grey  
Headliner*



224 Saddle Brown/Black  
*Black Headliner*



225 Ginger Beige/Black  
*Black or Porcelain  
Headliner*



228 Crystal Grey/Black  
*Black or Crystal Grey  
Headliner*

51U - Black Headliner  
55U - Porcelain Headliner  
58U - Crystal Grey Headliner

<sup>1</sup>CANNOT order 399 Driver/Passenger Multi-Contour Seats w/Massage and 401 Ventilated Front Seats. Upholstery options will automatically add 244  
<sup>2</sup>CAN order 399 Driver/Passenger Multi-Contour Seats w/Massage



# Upholsteries

## Optional: AMG GLE43 (\$2,270)

Nappa Leather



811 Black Pearl/Black<sup>1</sup>  
Black or Crystal Grey  
Headliner



821 Black Pearl/Black<sup>1</sup>  
w/ Red Stitching  
Black or Crystal Grey  
Headliner



855 Porcelain/Black<sup>1</sup>  
Black or Porcelain  
Headliner

## Optional: AMG GLE43 (\$4,900)



designo  
Exclusive Nappa Leather



955 designo  
Porcelain/Black  
Black DINAMICA  
Headliner  
(requires P62Pkg)

<sup>1</sup>CANNOT order 399 Driver/Passenger Multi-Contour Seats w/Massage and 401 Ventilated Front Seats. Upholstery options will automatically add 244 - Sport Seats and Control Code - P29.

51U - Black Headliner | 55U - Porcelain Headliner | 58U - Crystal Grey Headliner | 61U - Black DINAMICA Headliner



# Upholsteries

Standard: AMG GLE63 S

Exclusive  
Nappa Leather



534 Espresso Brown/  
Black  
*Black DINAMICA Headliner*



535 Porcelain/Black  
*Black DINAMICA Headliner*



541 Black w/Grey Stitching  
*Black DINAMICA Headliner & Silver Seat Belts<sup>1</sup>*

**Important Note:** If 399 is selected, the AMG Crest **will not** come on the headrest due to an automatic change in the headrest.



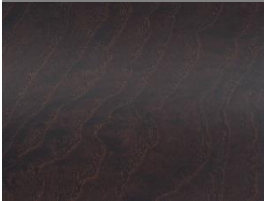
# Trims

## 734 – Eucalyptus Wood



\$160 on GLE 43  
n/c on GLE63S  
Does not include wood cover over cupholder

## H09 – Natural Grain Brown Ash Wood



Optional on all models  
\$160

## H21 – Black Piano Lacquer



Optional on all models  
\$160

## 729 – Anthracite Poplar Wood



Optional on all models  
\$160

## 739 – Aluminum

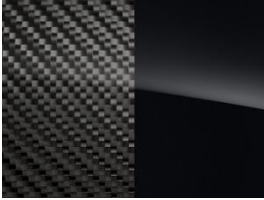


Std. on GLE43; n/c on GLE63S



## Trims

### H10 – Carbon-Fiber/ Black Piano Lacquer



Optional on all models

\$1,750

(GLE43: requires Ambient Lighting (876), P02 Pkg, or P03 Pkg)



# Wheels

Standard

Optional

Optional

AMG GLE43



684 - AMG Twin 5-Spoke  
R02, 690  
21"



667 - AMG Multi-Spoke  
R01, 690  
22"  
\$1,250



671 - AMG Twin 5-Spoke  
w/ Black Accents  
R01, 690  
22"  
\$1,250

AMG GLE63 S



676 - AMG Cross-Spoke  
R01, 669  
22"



674 - AMG Multi-Spoke  
R01, 669  
21"  
\$0



680 - AMG Cross-Spoke,  
Black  
R01, 669  
22"  
\$500

**Important Note:** If Bang & Olufsen BeoSound System (811) is selected, the spare wheel option will automatically be replaced by TIREFIT (B51).

R01: Summer Performance Tires  
R02: All-Season Tires  
R03: Sport Tires

R66: MOE Tires (Extended Mobility)  
669/690: Spare Tire/Minispare  
B51: Tirefit Mobility Kit





# Visual Equipment Differentiation

## Steering Wheels

### 277 – Sport Steering Wheel



- Standard AMG GLE43. N/A on GLE63S
- The 12 ergonomic control buttons on the left of the multifunction steering wheel in Nappa leather operate the display menus in the instrument cluster and the Audio 20/COMAND display. On the right, the driver can control the volume of audio devices, telephone and navigation system

### AMG Performance Steering Wheel in Nappa Leather\*



- Standard on AMG GLE63 S
- For outstanding vehicle control, the AMG performance steering wheel in nappa leather features a flattened bottom section and perforated grip areas.

### 281 – AMG Performance Steering Wheel w/ DINAMICA

\$0



- Optional on AMG GLE63 S. N/A on GLE43
- For even more grip when carrying out sporty driving maneuvers, the AMG Performance steering wheel in Nappa leather features a grip area upholstered in DINAMICA microfiber



## Visual Equipment Differentiation

### Steering Wheels Continued

#### 443 – Heated Steering Wheel

\$250



- Optional on all models
- On cold days, heating of the steering wheel rim very rapidly ensures cosy temperatures of the grip area and thus also warm hands. The switch for turning the heating on and off is positioned right next to the steering wheel. The temperature oscillates around 95°F.



# Visual Equipment Differentiation

## Headlights

### Active LED Headlamps & LED Taillamps



***Standard on all models***

Active LED Headlamps:

- Automatically activated cornering lights for navigating dark driveways
- Active movement for illuminating curves ahead of the vehicle
- Adaptive Highbeam Assist
- LED technology
- Welcome Home function: the LEDs in the headlamps light up after opening the vehicle and transition to white locator lighting



## Visual Equipment Differentiation Brakes

### U70 – AMG Red Painted Brake Calipers



- Standard on GLE63 S
- Painting the brake calipers in red visually underscores the high performance of the brake system



## Option Packages

### P01 – Premium 1 Package

#### ***Standard on all models***

- U80 - 115V AC power outlet (located in 2nd row)
- U71 - DVD Coding
- 14U - Smartphone Integration
  - 16U - Apple CarPlay™
  - 17U - Android Auto
- 22P - Lane Keeping Assist Package
- 234 - Blind Spot Assist
- 476 - Lane Keeping Assist
- 502 - Navigation Updates for 3 Years
- 531 - COMAND Navigation
- 536 - SIRIUS Satellite Radio
- 810 - harman/kardon Surround Sound System
- 815 - Single DVD Player
- 889 - KEYLESS-GO

### P02 – Premium 2 Package

\$650

#### ***Standard on the GLE63 S***

- 282 - Rear-Seat Center-Armrest Pass Through
- 311 - Heated/Cooled Cup Holders
- 876 - Ambient Lighting



## Option Packages Continued

### P03 – Premium 3 Package

GLE43: \$2,250

GLE63S: 1,600

***Only in combination with 996 on GLE43***

***Including contents of P02, plus the following:***

- 233 – Distance Pilot DISTRONIC®
- 233 – Steering Pilot
- 237 – Active Blind Spot Assist
- 238 – Active Lane Keeping Assist
- 23P – Driver Assistance Package
- 269 – Active Brake Assist with Cross-Traffic Function
- 271 – PRE-SAFE® PLUS
- 300 – PRE-SAFE Brake with Pedestrian Recognition
- 513 – Traffic Sign Assist

### 996 – Parking Assist Package

\$1,290

***Standard on the GLE63 S. Contents also included in P03 Pkg***

- P44 – Parking Assist Package Code
- 235 – Parking Pilot
- 501 – Surround View System

### 521 – Night Package

\$750

***Available only on AMG GLE63 S***

- P55 – AMG Night Styling Package



## Stand-Alone Options

Stand-Alone Options		
242	Passenger Seat with Memory & Lumbar Support <i>Std. on GLE63S</i>	\$365
281	AMG Performance Steering Wheel w/ DINAMICA <i>n/a on GLE43</i>	\$0
399	Multi-contour front seats with massage and comfort headrests	\$1,100
401	Heated/ventilated front seats <i>Std. on GLE63 S</i>	\$570
443	Heated steering wheel	\$250
468	ACTIVE CURVE SYSTEM <i>Std. on GLE63 S.</i>	\$2,910
550	Trailer hitch	\$575
581	3-Zone Climate Control	\$790
811	Bang & Olufsen Sound System <i>(Spare tire is replaced by TIREFIT when 811 is selected)</i>	\$4,550
841	Laminated Acoustic Glass for 1 <sup>st</sup> Row <i>Std. on GLE63 S</i>	\$250
846	Brushed aluminum illuminated running boards <i>n/c on GLE63 S</i>	\$670
864	Rear seat entertainment system	\$1,950
866	Rear seat entertainment pre-wiring	\$170
872	Heated Rear Seats	\$620
874	MAGIC VISION CONTROL® <i>n/a on GLE63 S</i>	\$350
883	Soft-Close Doors	\$550
892	Lockable Rear Compartment <i>n/a on GLE63 S</i>	\$100
942	Cargo Organizer System	\$300



## Stand-Alone Options/Special Orders/Accessories

### Stand-Alone Options Continued

U21	AMG Performance Exhaust System <i>n/a on GLE43</i>	\$625
P21	Air Ionization with Air Filter	\$280
U09	MB-TEX Wrapped Dashboard <i>n/a on GLE63 S</i>	\$450
293	Rear Side Airbags (SPC)	\$420

### MB Accessories Program

00A	Illuminated Star (n/a with P03 package)	\$550
068	Wheel Locks	\$150
980	Accessory Chrome Package (Door cups and hood fins)	\$260





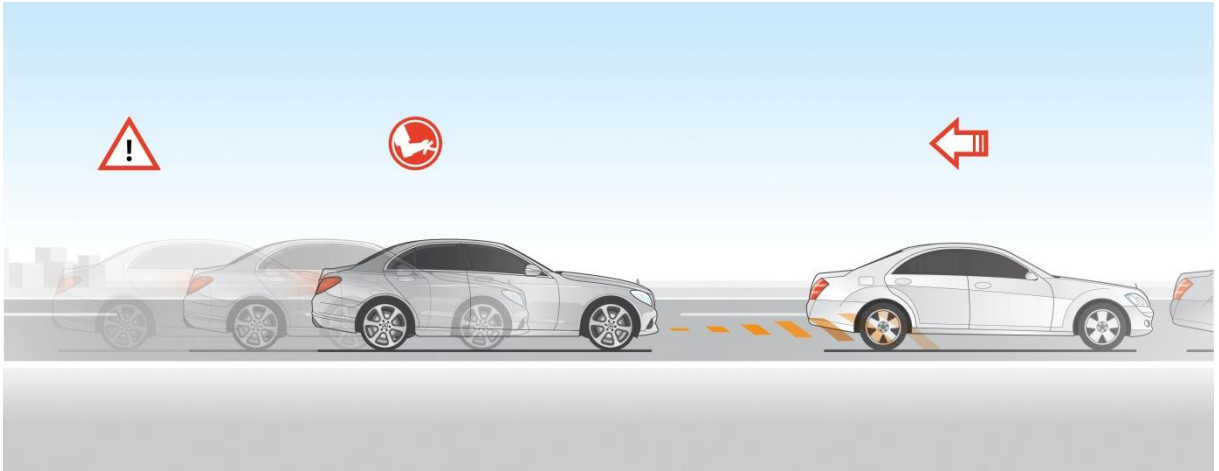
# Specifications

	AMG GLE43	AMG GLE63 S
Engine Configuration	3.0L V6 Biturbo Engine	5.5L V8 Biturbo Engine
Power (hp)	362	577
Torque (lb-ft)	384 @ 1,800-4,000 rpm	561 @ 1,750-5,250 rpm
Displacement (cc)	2,996 cc	5,461 cc
Acceleration 0-60mph (sec)	5.6 sec	4.1 sec
Fuel Economy (Cty/Hwy/Com)	17/23/20	14/18/15
Top Speed (mph)	155 (lim.)	174 (lim.)
Fuel Requirement (Octane)	91	91
# Valves per cylinder	4	4
Compression	10.7 : 1	10.0 : 1
Transmission	9G-TRONIC Sport Transmission	AMG SPEEDSHIFT PLUS 7G-TRONIC
Transmission Speeds	9	7
Drive Configuration	All-Wheel Drive	All-Wheel Drive
Standard Front Wheel	10 J x 21	10 J x 22
Standard Rear Wheel	11 J x 21	11.5 J x 22
Standard Front Tire Size	275/45 R21	285/40 ZR22
Standard Rear Tire Size	315/40 R21	325/35 ZR22
Standard Tire Type	All-Season	High-Performance
Fuel Tank Size (gallons)	24	24
Trunk Size (cubic feet)	23	23
Curb Weight (lbs)	4,960	5,379
Vehicle Length (in.)	192.6	193.6
Vehicle Width (in.)	83.8	83.8
Vehicle Height (in.)	67.7	67.6
Wheelbase	114.8	121.1
Track Width Front/Rear (in.)	65.1/65.9	65.2/67.1



## Product Highlights: Active Brake Assist

*Standard on all models*

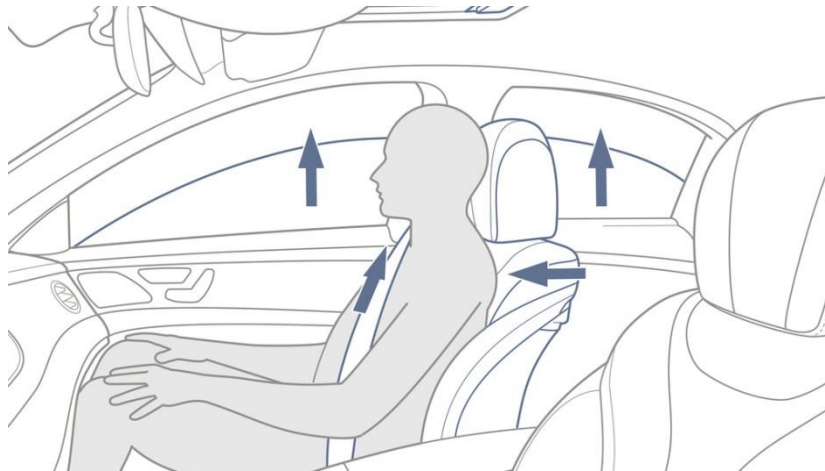


- Driving assistance system to lessen the danger of rear-end collisions and mitigate the consequences of accidents
- Combination of radar-based distance warning, assisted braking, and autonomous partial braking
- Visual warning by means of a warning lamp in the instrument cluster when the safe distance to vehicles in front is too low within a speed range between 20 and 155 mph
- Additional audible warning if the distance diminishes rapidly
  - In the case of moving vehicles, in a speed range between 19 and 155 mph
  - In the case of stationary obstacles, in a speed range between 4 and 124 mph
- In case of emergency braking by the driver – and if necessary – increase in the brake pressure to prevent a collision
- Initiation of autonomous partial braking if the driver fails to react:
  - In the case of moving vehicles, in a speed range between 4 and 65 mph
  - In the case of stationary obstacles, in a speed range between 4 and 31 mph



## Product Highlights: PRE-SAFE

*Standard on all models*



### **PRE-SAFE® can be activated by the following situations:**

- Hard braking: the deceleration required by the driver is much greater than the physically possible vehicle deceleration on a slippery surface (aquaplaning, ice, snow).
- Critical steering movements: rapid steering movements at high speeds, which indicate a panic response by the driver and can destabilize the vehicle

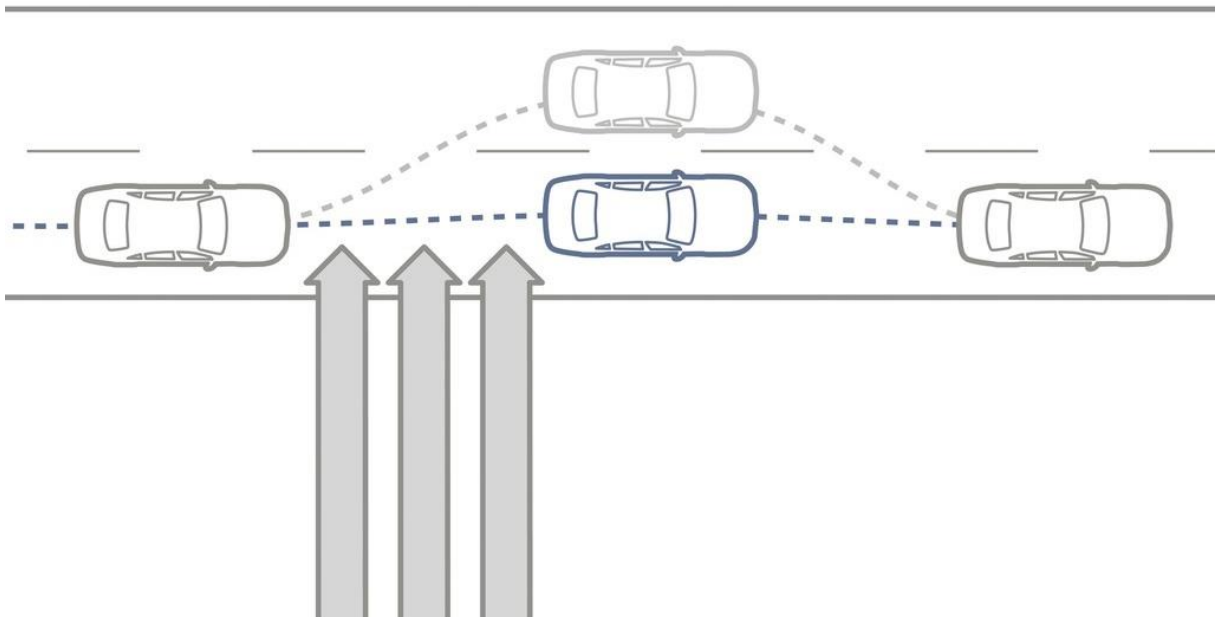
### **PRE-SAFE is able to initiate the following measures:**

- Reversible preventive tensioning of the front seat belts by electric motors
- Open side windows and an open panoramic sunroof are almost completely closed when an imminent rollover is detected
- The front passenger seat is moved to a more favorable position for a possible impact. Repositioning depends on whether the occupant is wearing a seat belt or not, and whether a child seat has been detected.



## Product Highlights: Crosswind Assist

*Standard on all models*



- Traditionally, strong gusts of wind may lead to sudden lateral drift of the vehicle
- Crosswind Assist aids the driver by reducing the vehicle's lateral drift substantially in windy driving conditions
- Crosswind Assist is integrated into the ESP® sensor system and enables the timely detection of gusts of crosswind
- Automatic brake intervention on the wheels on the side of the vehicle facing the wind results in a yaw motion which counteracts the crosswind
- Crosswind Assist substantially enhances the driver's sense of control, stability and safety
- Crosswind Assist is active from 50mph when driving straight ahead and on slight bends



## Product Highlights: AIRMATIC Package

*Standard on all models*



- Air suspension combined with the Adaptive Damping System ADS PLUS for improvements in ride comfort and driving dynamics
- "Comfort" and "Sport" settings for a more comfortable or sportier set-up
- Constant vehicle level irrespective of load thanks to pneumatic all-round self-levelling suspension
- Level can be raised on rough roads
- Automatic lowering to the sport level (-0.59 inches) from a speed of 50mph in "Comfort" transmission mode
- Lowering by 0.59 inches in "Sport" transmission mode and by 0.98 inches in "Sport+" mode compared with "Comfort" mode



## Product Highlights: AMG DYNAMIC SELECT

Standard on all models



A comfortable, sporty, winter-optimized or completely individual vehicle setting can be called up conveniently using the DYNAMIC SELECT controller in the center console. The selected transmission mode changes parameters such as the characteristics of the engine, transmission and suspension.

Choice of up to 5 different driving programs:

1. *"Comfort"* standard setting: well-balanced and fuel-efficient
2. *"Sport"* mode: enhanced agility and dynamism thanks to tauter damper tuning, more sporty vehicle level – lowered by 0.59 in – and modified shift points
3. *"Sport+"* mode: further accentuates the characteristics of *"Sport"* mode and lowers the suspension by 0.98 in. It includes sports lights: more dynamic control of the active light function and faster changing of the light functions.
4. *"Slippery"* mode: optimized handling on icy and snow-covered roads thanks to reduced engine and transmission settings as well as adjusted ESP control thresholds
5. *"Individual"* mode: variation of individual parameters to suit personal preference



# Gallery

**225 – Ginger Beige/Black Leather**  
(H09 Natural Grain Brown Ash Wood Trim)



**821 – Black Pearl/Black Leather w/ Red Stitching**  
(729 Anthracite Poplar Wood trim)



# Gallery

**855 – Porcelain/Black Nappa Leather**  
(H10 Carbon Fiber/Piano Black Lacquer Trim)



**541 – Black Exclusive Nappa Leather w/ Grey Stitching**  
(H10 Carbon Fiber/Piano Black Lacquer Trim)



AMG Crest in Headrest included on GLE63 S, except when in combination with 399



# Gallery

224 – Saddle Brown/Black Leather



811 – Black Pearl/Black Nappa Leather



# Gallery

855 – Porcelain/Black Nappa Leather



955 – *designo* Porcelain/Black Exclusive Nappa Leather



# Gallery

Load compartment with rear bench seat folded 60%



Load compartment with rear bench seat fully folded down



# Gallery

AMG GLE43

