

FAKRA

CONNECTOR SERIES

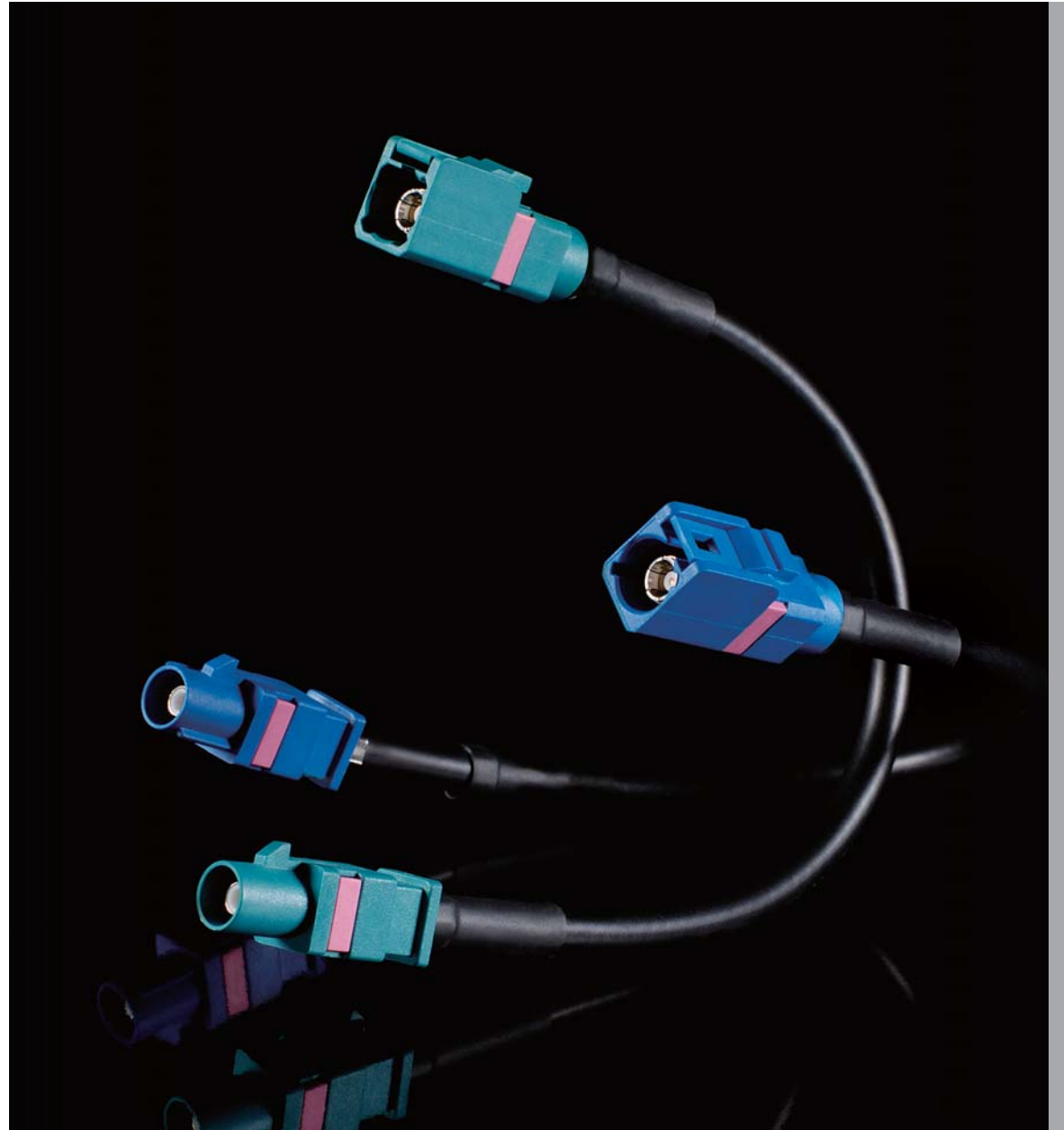
INTERFACE MATING DIMENSIONS

SPECIFICATIONS

CONTENTS:

R/A CRIMP PLUG
CRIMP PLUG
CRIMP JACK
PCB MOUNT JACK

Bridging Gaps

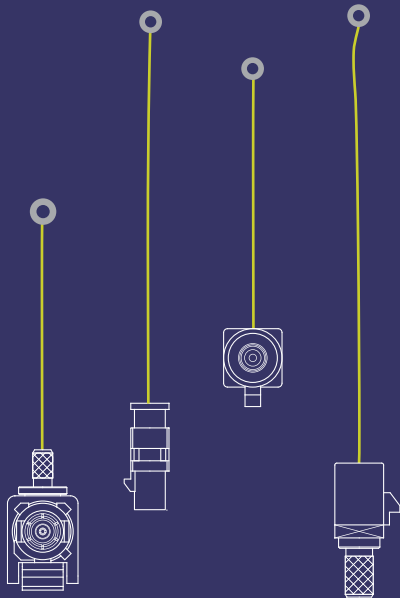


FAKRA series

To cope with the growing demand in telematics and multimedia applications for modern automobiles, the automotive industry has created a high-performing, cost-effective RF connector based on the FAKRA and USCAR standards.

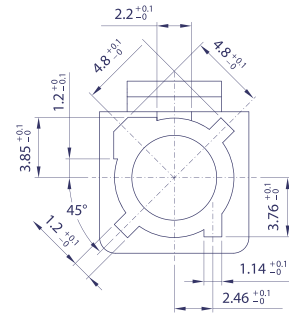
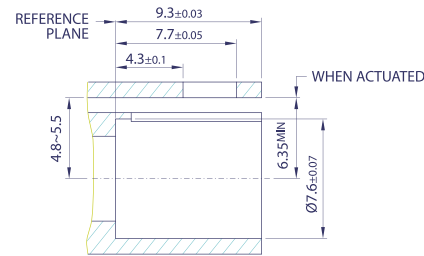
Based on SMB interface, FAKRA connectors include a plastic housing and are designed with multiple colored codes for easy identification.

FAKRA connectors are designed to operate up to 4GHz and for applications of particular mechanical and environmental requirements of the automobile industry such as Digital Satellite Radio (SDARS), GSM, GPS...

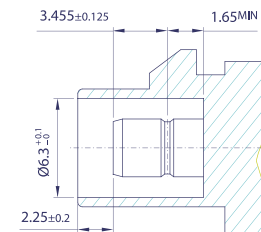
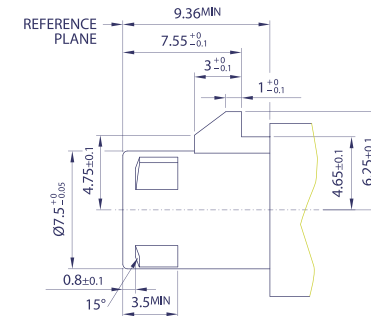
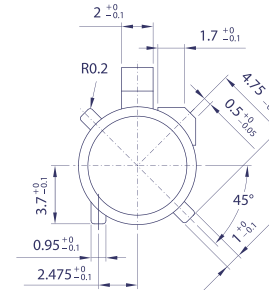


INTERFACE MATING DIMENSIONS

PLUG /



JACK /



SPECIFICATIONS

Electrical /

Impedance	50 Ohm	
Frequency Range	0 – 4 GHz	
Working Voltage	RG-178: 250 Vrms. Max. RG-316,085": 335 Vrms. Max.	
Dielectric Withstanding Voltage	RG-178: 750 Vrms. Min. RG-316,085": 1000 Vrms. Min.	
VSWR	Straight	1.3 Max.
	Right Angle	1.5 Max.
Contact Resistance	Center Contact	20 Milliohms Max.
	Outer Contact	10 Milliohms Max.
Insulator Resistance	1000 Megohms Min.	

Material /

Parts Name	Material	Finish
Plastic Housing	PA66 w/ 30% Glass Fiber	See Coding Color
Body, Metal Parts	Brass per QQ-B-626	Nickel 70 micro-inches
Center Contacts	Male: Brass per QQ-B-626	Gold 30 micro-inches
	Female: Beryllium copper per QQ-C-530	Gold 30 micro-inches
Insulators	Teflon	White
Crimp Ferrules	Annealed Brass	Nickel 70 micro-inches

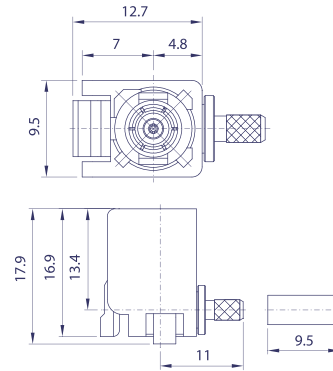
NOTE: Other Material / Finish is Available on Request.

Mechanical & Environmental /

Plastic Housing Engagement Force	25 N Max.
Plastic Housing Disengagement Force	25 N Min.
Contact Retention	4 lbs. Min.
Durability(Mating)	25 cycles Min.
Temperature Range	-40°C to 105°C
Vibration	MIL-STD-202 Method 204 Test Cond.B.
Salt Spray	MIL-STD-202 Method 101 Test Cond.B.
Thermal Shock	MIL-STD-202 Method 107 Test Cond.B.

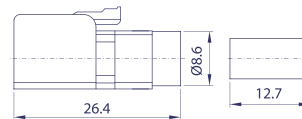
FAKRA

series



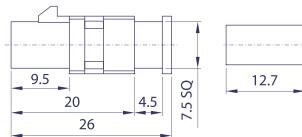
R/A CRIMP PLUG

Model No.	Cable Group	Impedance
FL68P1-NR5	RG-58/U, 58C/U RG-142A/U, 223/U, 400/U RG-174/U, 188A/U, 316/U RG-316/U DOUBLE BRAID RG-178B/U, 196A/U	50



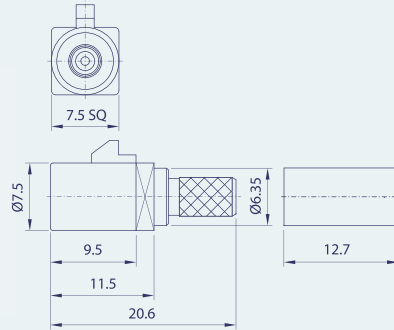
CRIMP PLUG

Model No.	Cable Group	Impedance
FL68P1-KS5	RG-58/U, 58C/U RG-142A/U, 223/U, 400/U RG-174/U, 188A/U, 316/U RG-316/U DOUBLE BRAID RG-178B/U, 196A/U	50



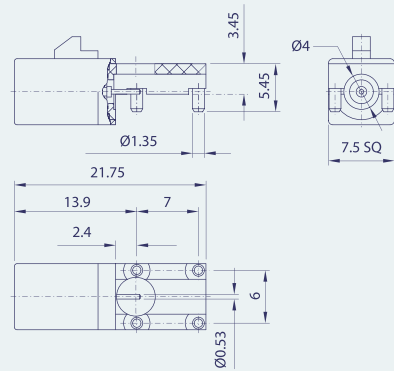
CRIMP JACK

Model No.	Cable Group	Impedance
FL78J1-KS5	RG-58/U, 58C/U RG-142A/U, 223/U, 400/U RG-174/U, 188A/U, 316/U RG-316/U DOUBLE BRAID RG-178B/U, 196A/U	50



CRIMP JACK

Model No.	Cable Group	Impedance
FL68J1-NS5	RG-58/U, 58C/U RG-142A/U, 223/U, 400/U RG-174/U, 188A/U, 316/U RG-316/U DOUBLE BRAID RG-178B/U, 196A/U	50











































PCB MOUNT JACK

Model No.	Cable Group	Impedance
FL78J5-NS5	N/A	50

FAKRA series

CODINGS / APPLICATIONS

Code	Plug	Jack	Color Similar To Ral No.	Possible Applications
A			 Black 9005	Radio without phantom supply
B			 Cream white 9001	Radio with phantom supply
C			 Blue 5005	GPS
D			 Bordeaux 4004	GSM cellular phone
E			 Green 6002	TV1 / SDARS
F			 Brown 8011	TV2 / SDARS
G			 Grey 7031	Remote control keyless entry
H			 Violet 4003	GPS for telematics and navigation
I			 Beige 1001	Remote control parking heating
K			 Curry 1027	Radio with IF
L			 Carmine red 3002	Not defined
M			 Pastel orange 2003	Not defined
N			 Pastel green 6019	Not defined
Z			 Water blue 5021	Neutral coding

