

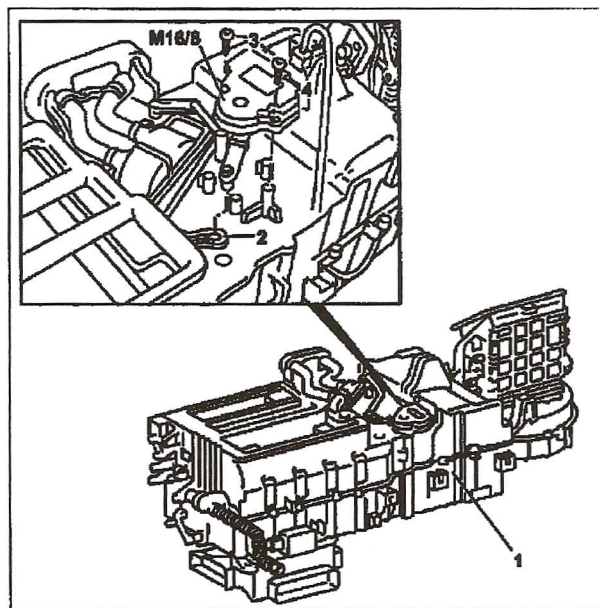
## Air Door Actuator / Motor: Service and Repair

### AR83.30-P-2020GH Remove/Install Actuator For Blend Air Flap

#### Removing And Installing Blending Air Increment Adjustment Motor

Shown on model 163 up to VIN A289564, X754619

- 1 A/C housing
- 2 Lever mechanism
- 3 Bolts
- 4 Connector
- M16/8 Blend air flap actuator



P83.30-0770-12

Shown On Model 163 Up To VIN A289564, X754619

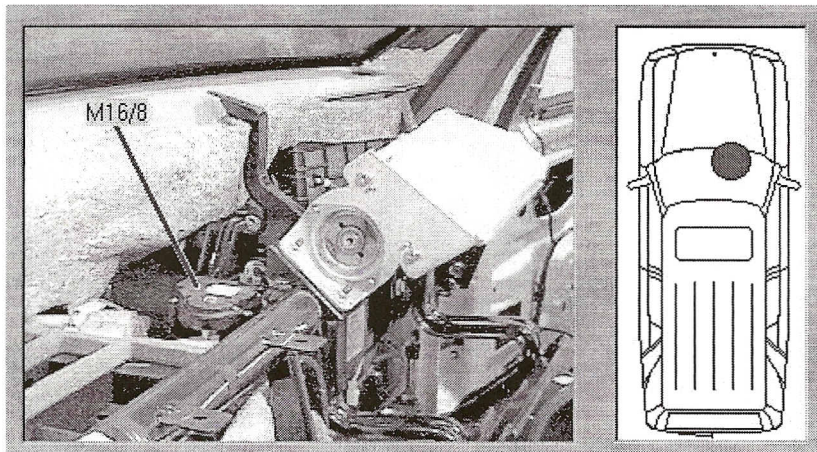
- 1 Remove instrument panel
- 2 Disconnect connector (4) from blend air flap actuator (M16/8)
- 3 Unscrew screws (3) from blend air flap actuator (M16/8)

**NOTE:** 3 screws are fitted as of VIN A289565, X754620.

- 4 Detach blend air flap actuator (M16/8) from AC housing (1)
- 5 Install in the reverse order.

## Vehicle: Component Locations

### Blend Air Flap Actuator Motor - M16/8



Passenger compartment, right side of dashboard.