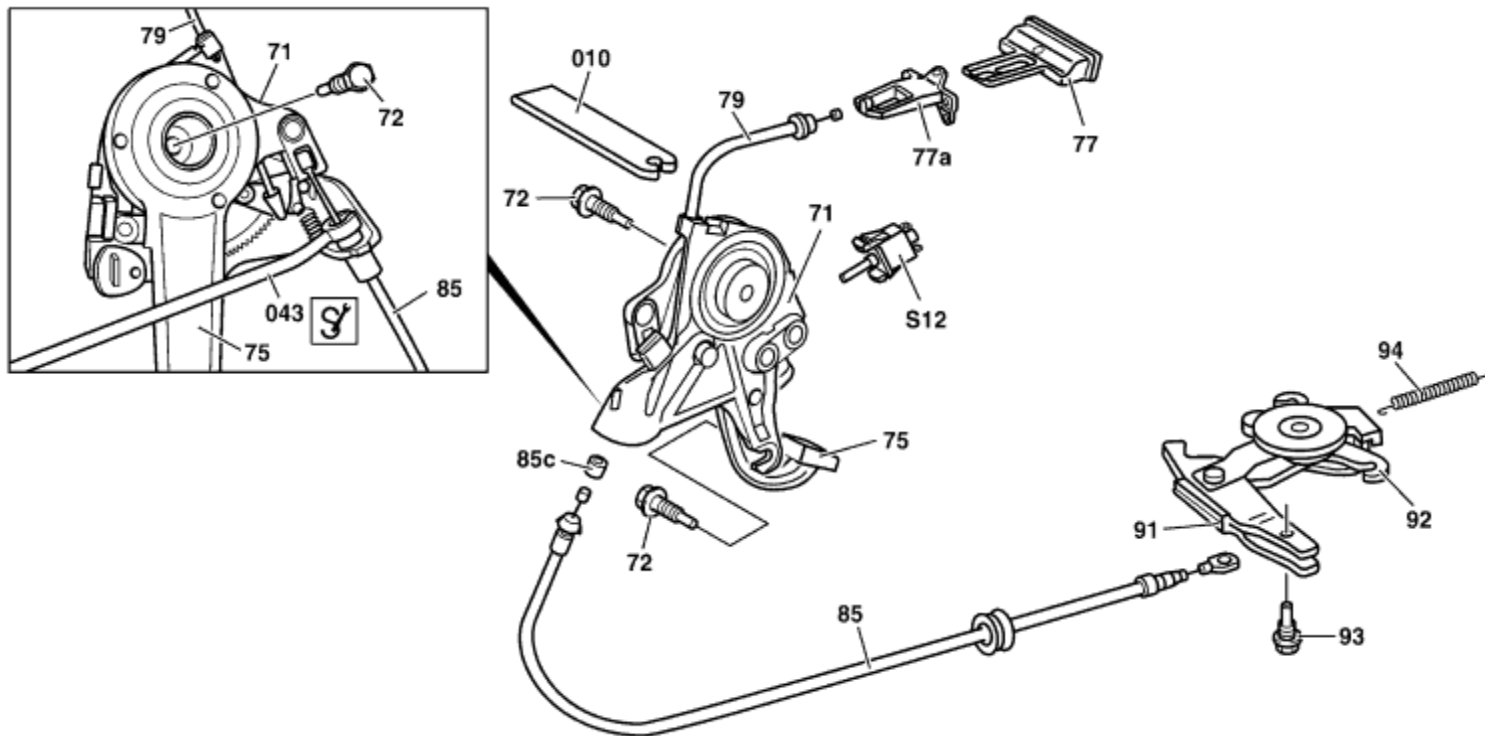


AR42.20-P-0510GH

Remove/install parking brake pedal assembly






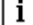


3.2.97


MODEL 163



P42.20-0290-09

	Remove/Install		
Danger!	Lethal injuries are possible if vehicle slips off of lifting platform	Align vehicle between the columns of the hydraulic hoist and position the four support plates below the hoist support points specified by the vehicle manufacturer.	AS00.00-Z-0010-01A

1	Pre-tension automatic cable slack adjuster		AR42.20-P-0520-01A
2	Remove cover of pedal assembly (71)		
3	Remove parking brake indicator switch (S12).		
4	Detach brake cable (85) from tensioning shackle at parking brake pedal (75) and unclip from holding lug using snap-release tool (043)	 Installation: Observe rubber ring (85c).	
		 Snap-release tool	129 589 11 63 00
5	Remove pedal assembly (71).	Unscrew upper bolt (72) to do this. Only loosen lower bolt (72) and detach pedal assembly (71)	
		 Do not loosen torx bolts on back of pedal assembly (71) otherwise the pedal assembly (71) will be damaged beyond repair.	
			BA42.20-P-1001-01A
	Friction brake of parking brake pedal assembly, function		GF42.20-P-1000A
6	Detach control cable (79) for releasing parking brake.	 To do so, first remove the bracket (77a) and then detach the control cable (79) from the release lever (77). Unclip control cable (79) from pedal assembly (71) using tool (010).	
	Tool for releasing parking brake control cable		WF58.50-P-4220-01A
7	Install in the reverse order		
8	Relieve load on automatic slack adjuster.		AR42.20-P-0520-02A
	Inspecting		
9	Check version of pedal assembly (71)		

 BT	Parking brake pedal assembly modified	BT42.20-P-0510-01A
10	Adjust parking brake	AR42.20-P-0540GH

 Parking brake

Number	Designation	Model 163
BA42.20-P-1001-01A	Bolt of pedal assembly, foot-operated parking brake, on front wall pillar	Nm 12



129 589 11 63 00

Snap-release tool