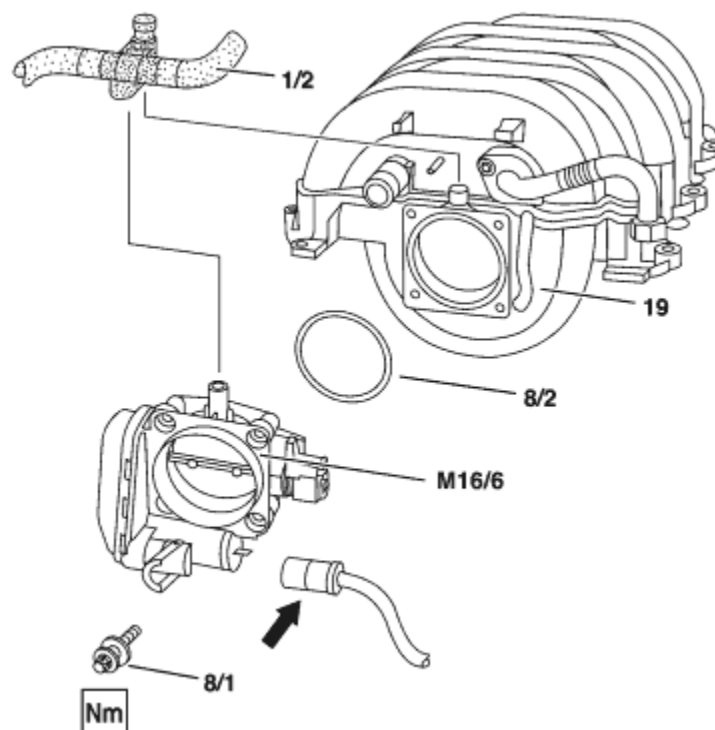


AR30.20-P-1262A	Remove/install electronic accelerator actuator with flap connection	5.7.96
-----------------	---	--------


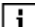
ENGINE 112.942 in MODEL 163.154
 ENGINE 113.942 in MODEL 163.172
 ENGINE 113.981 in MODEL 163.174
 ENGINE 112.970 in MODEL 163.157

Shown on Engine 112 in Model 210

1/2 Crankcase vent line
 8/1 Bolts
 8/2 O-ring
 19 Intake manifold
 M16/6 Throttle valve actuator
 Arrow connector



P30.20-0224-12

	Remove/Install		
1	Remove cylinder head cover trim panel or air cleaner	 Remove air cleaner housing or cylinder head cover trim panel by lifting	

		vertically up and off the cylinder head covers. i Installation: Moisten slightly with sliding compound the retaining rubbers on the cylinder head covers and the sealing ring of the hot film mass air flow sensor in the air cleaner housing.	
		Liquid lubricant (Naphtolen H)	BR00.45-Z-1003-06A
2	Remove hot film mass air flow sensor with air intake pipe	Model 163.154/157	AR07.07-P-1454A
		Model 163.172/174	AR07.07-P-1454MV
3	Detach crankcase vent line (1/2) from intake manifold (19)		
4	Disconnect electrical connector (arrow)	i Pull lock back.	
5	Undo bolts (8/1) and remove throttle valve actuator (M16/6)	i Installation: Replace O-ring (8/2).	
		Nm	BA30.20-P-1001-01A
6	Install in the reverse order		

Nm Electronic accelerator pedal actuator

Number	Designation	Engines 112 , 113.942/965/981
BA30.20-P-1001-01A	Bolt, electronic accelerator throttle actuator to intake manifold	Nm 9

Repair products

Number	Designation	Order number
BR00.45-Z-1003-06A	Liquid lubricant (Naphtolen H)	000 989 01 60