

Brake Warning

With the key in steering lock position 2, the warning lamp comes on and should go out when the engine is running.

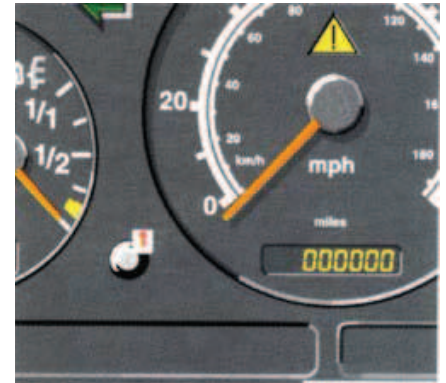
The brake warning lamp will come on:

- when there is insufficient brake fluid in the reservoir (engine running and parking brake released), or
- when the parking brake is set (engine running), or
- when Electronic Brake Proportioning (EBP) system is malfunctioning.

If you find that the minimum mark on the brake fluid reservoir is reached, have the brake system checked for brake pad thickness and leaks.

Warning!


Driving with the brake warning lamp illuminated can result in an accident. Have your brake system checked immediately if the brake warning lamp stays on. Don't add brake fluid before checking the brake system. Overfilling the brake fluid reservoir can result in spilling brake fluid on hot engine parts and the brake fluid catching fire. You can be seriously burned.



Flexible Service System (FSS)


The FSS permits a flexible service schedule that is directly related to the operating conditions of the vehicle.

The symbol  appears together with a message in the multifunction indicator prior to the next suggested service.

Depending on operating conditions throughout the year, the next service is calculated and displayed in days (e.g. 29 ) or distance remaining.

The display begins to appear either 30 days or 2000 miles/km prior to the next suggested service.

The message is displayed for approx. 10 seconds when turning the key in steering lock to position 2, or it can be canceled manually by pressing button (1).

Once the suggested term has passed, the symbol  plus message, preceded by a - (minus symbol), blinks when turning the key to position 2.

The FSS display can also be called up for approx. 10 seconds with display illuminated by pressing button (1) twice.

Following a completed service the Mercedes-Benz light truck dealer sets the counter to 10 000 miles (Canada: 15 000 km) or 365 days.

The counter can also be set by any individual. To do so:

1. Turn electronic key in steering lock to position 2.
2. Within 4 seconds press button (1) twice.
3. The present status for days or distance is displayed. Within 10 seconds turn electronic key in steering lock to position 0.
4. Press and hold button (1), while turning electronic key in steering lock to position 2 again. The present status for days or distance is displayed once more. Continue to hold button (1). After approx. 10 seconds a signal sounds, and the display shows 10 000 miles (Canada: 15 000 km).
5. Release button (1).

If the FSS counter was inadvertently reset, have a Mercedes-Benz dealer correct it.

Notes:

When disconnecting vehicle battery for one or more days at a time, such days will not be counted. Any such days not counted by the FSS can be added by your Mercedes-Benz dealer.

The interval between services is determined by the kind of vehicle operation. Driving at extreme speeds, and cold starts combined with short distance driving in which the engine does not reach normal operating temperature, reduce the interval between services.

The FSS allows for distances between 10 000 miles (Canada: 15 000 km) and 20 000 miles (Canada: 30 000 km), or from 365 to 730 days between services.

However you choose to set your reference numbers, the scheduled services as posted in the Service Booklet must be followed to properly care for your vehicle.