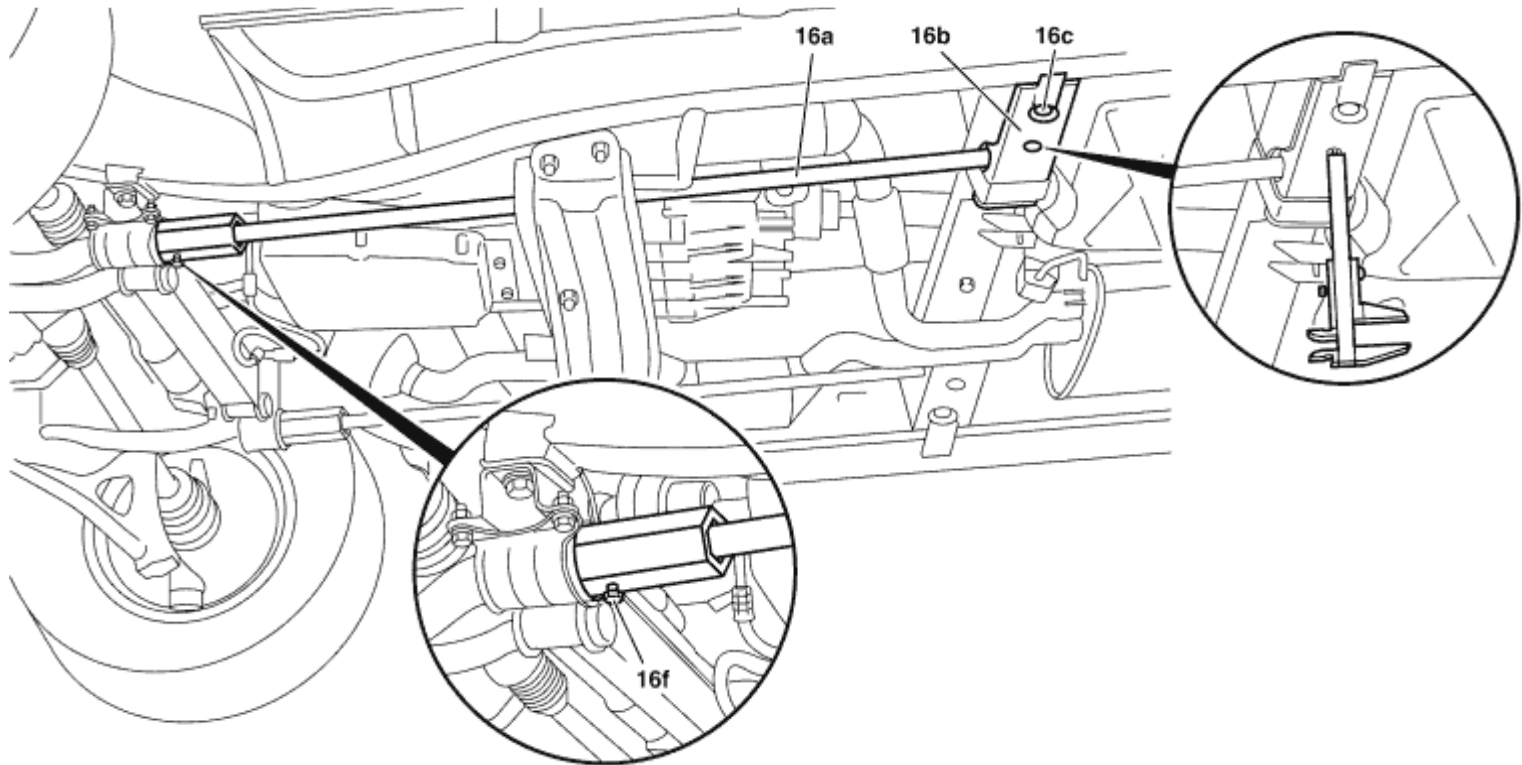


AR32.20-P-0200GH	Remove/install front spring	19.2.97
------------------	-----------------------------	---------

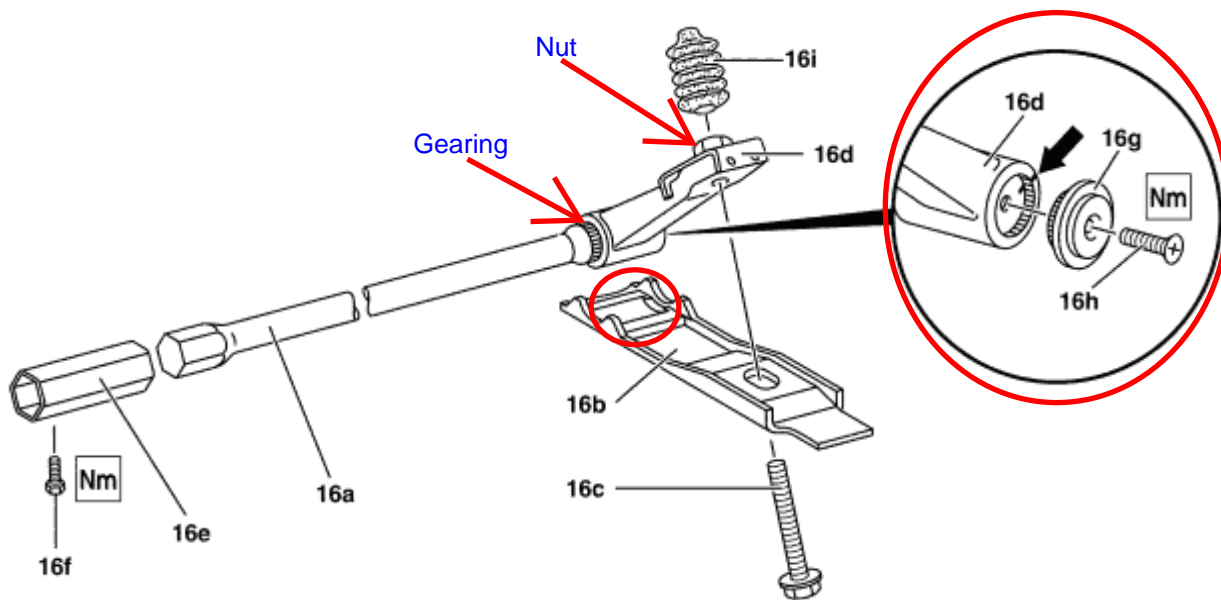
MODEL 163



P32.25-0254-09

16a Torsion bar spring  
16b Counterplate

16c Bolt  
16f Bolt



P32.20-0273-08


16a Torsion bar spring  
16b Counterplate  
16c Bolt

16d Clamping lever  
16e Profile sleeve  
16f Bolt

16g End cover  
16h Bolt  
16i Rubber bellows

	Remove, Install		
	<b>Danger!</b>	<b>Risk of fatal accident</b> from vehicle slipping or toppling off the lift platform	Align vehicle between the columns of lifting platform and position the four support plates below the support strong points specified by the vehicle manufacturer. <a href="#">AS00.00-Z-0010-01A</a>
✓ 1	Jack up vehicle. <b>Front wheels must be off</b>	<b>ground. Do not place jack or jack stands</b>	<b>under control arms.</b>
✓ 2	Measure spring preload of torsion bar spring (16a) using caliper gage at bore	<b>i Installation:</b> Restore spring preload.	<b>Use jacking points.</b>

To replace plastic bearing (red circle) just follow steps 1-3. Part #163 323 02 20. Two needed

✓ 3	Unscrew bolt (16c) and then release tension of torsion bar spring (16a).	<b>i</b> <b>Installation:</b> regrease bolt (16c). The rubber bellows (16i) must be filled with grease.	<a href="#">BR00.45-Z-1016-06A</a>
4	Undo bolt (16f) in profile sleeve (16e).	<b>Nm</b>	<a href="#">BA32.20-P-1001-01A</a>
5	Slide back profile sleeve (16e).		
6	Remove torsion bar spring (16a).	<b>i</b> <b>Installation:</b> The position of the torsion bar spring (16a) relative to the clamping lever (16d) is indicated (arrow).	
7	Loosen bolt (16h). Remove end cover (16g).	<b>Nm</b>	<a href="#">BA32.20-P-1002-01A</a>
8	Remove torsion bar spring (16a) from clamping lever (16d).	<b>i</b> <b>Installation:</b> Grease gearing on torsion bar spring. Observe markings.	<a href="#">BR00.45-Z-1016-06A</a>
9	Install in the reverse order		
10	Check vehicle level at front and rear axles with electronic inclinometer and adjust if necessary.		<a href="#">AR40.20-P-0301GH</a>
11	Check and correct headlamp adjustment		
 WAP	Check and correct headlamp adjustment		<a href="#">AP82.10-P-8260GH</a>

**Nm** Steel spring suspension of front axle

Number	Designation		Model 163
BA32.20-P-1001-01A	Bolt on profile sleeve	Nm	23
BA32.20-P-1002-01A	Bolt in end cover	Nm	≈23

**Auxiliary repair materials**

Number	Designation	Order number
BR00.45-Z-1016-06A	Optimol grease	A 000 989 76 51