

MODEL 163.113 #A up to 289564,

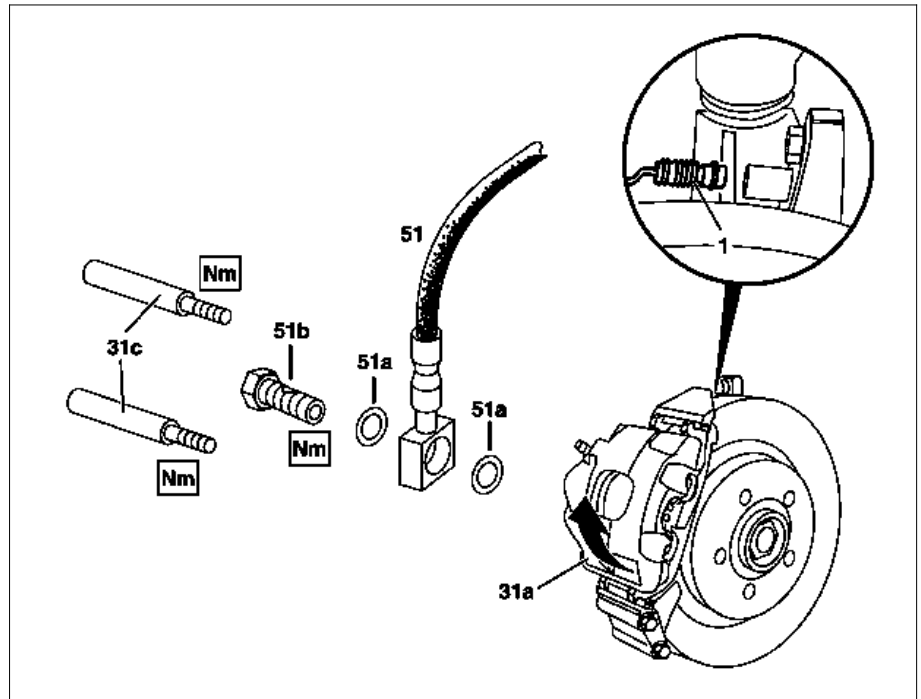
163.113 #X up to 754619,

163.154 #A up to 289564,

163.136

MODEL 163.154 /157 with CODE (494) USA version

- 1 Contact sensor connector
 31a Floating caliper
 31c Guide bolts
 51 Brake hose
 51a Seals
 51b Banjo bolt



P42.10-0446-06

	Remove/install		
Danger!	Risk of poisoning caused by swallowing brake fluid. Risk of injury caused by brake fluid coming into contact with skin and eyes.	Only pour brake fluid into suitable and appropriately marked containers. Wear protective clothing and eye protection when handling brake fluid.	AS42.50-Z-0001-01A
Danger!	Risk of accident when commissioning the vehicle due to a lack of braking effect when the service brake is operated for the first time after repair work	Before starting engine, actuate brake pedal several times until the pressure is built up and maintained in the brake system.	AS42.50-Z-0002-01A
	Brake fluid notes	All models	AH42.50-P-0001-01A
	Notes on repairs to brake system	All models	AH42.00-P-0003-01A
	Notes on installing brake hoses	Model 163	AH42.10-P-9406-01GH
1 AP	Remove wheels Remove/install wheels, rotate if necessary		AP40.10-P-4050GH
2.1	Unplug contact sensor connector (1)	Only present on left floating caliper.	
3	Depress brake pedal using brake pedal winch until the replenishing port in the master brake cylinder is closed	Do not allow brake fluid supply reservoir to run completely empty. Open bleed screw at floating caliper briefly to reduce pressure. Brake pedal winch	*000589183100
4	Remove banjo bolt (51b) from floating caliper.	Installation: Replace seals (51a). 	*BA42.10-P-1004-04A
5	Unscrew guide bolt (31c)	Installation: Replace guide bolts (31c). 	*BA42.10-P-1003-10E
6	Remove floating caliper (31a) together with brake pads	Swivel floating caliper upwards (arrow) and remove. Installation: First insert inner brake pad into piston of floating caliper then insert outer brake pad.	
7	Install in the reverse order		
8	Bleed brake system		AR42.10-P-0010GH

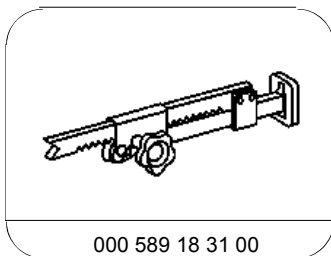
<p>⚠ Danger!</p> <p>9</p>	<p>Risk of accident when commissioning the vehicle due to a lack of braking effect when the service brake is operated for the first time after repair work</p> <p>Operate brake pedal several times until brake pads contact brake discs (resistance felt)</p>	<p>Before starting engine, actuate brake pedal several times until the pressure is built up and maintained in the brake system.</p>	<p>AS42.50-Z-0002-01A</p>
<p>10</p>	<p>Check brake system for leaks</p>		<p>AR42.10-P-0100-01A</p>

Nm Front axle brake caliper

Number	Designation	Model 163
BA42.10-P-1003-10E	Guide pin on caliper support	Nm 30

Nm Brake lines, brake hoses

Number	Designation	Model 163.113 as of VIN A289565, X754620 163.154 as of VIN A289565 except ^(USA)	Model 163.113 up to VIN A289564, X754619 163.154 up to VIN A289564	Model 163.136
BA42.10-P-1004-04A	Banjo bolt, brake hose to floating caliper	Nm -	33	33



000 589 18 31 00

Brake pedal jack