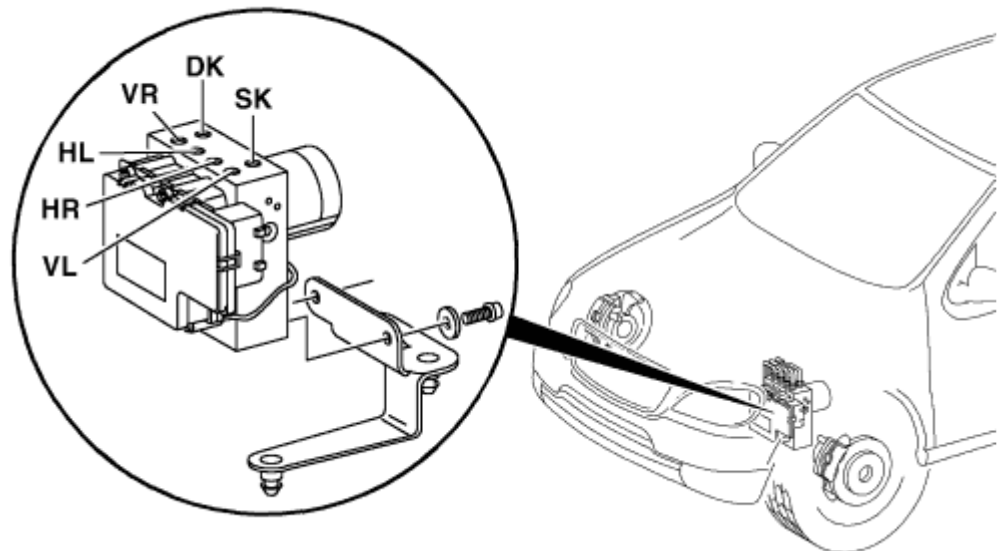


AR42.40-P-0816GH	Remove/install ETS/ASR/ESP hydraulic unit	3.2.97
------------------	---	--------

MODEL 163

**Connections of traction systems
hydraulic unit**

DK Pressure circuit
 HL To left rear wheel brake
 HR To right rear wheel brake
 SK Secondary brake circuit
 VL To left front wheel brake
 VR To right front wheel brake



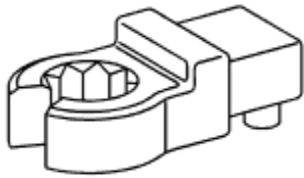
P42.40-0301-05

	Remove/install		
Danger!	Risk of poisoning from swallowing brake fluid. Risk of injury from skin and eye contact with brake fluid.	Pour brake fluid only into suitable and appropriately marked containers. Wear protective clothing and eye protection when handling brake fluid.	AS42.50-Z-0001-01A
	Notes on brake fluid	All models	AH42.50-P-0001-01A
	Notes on repairs to brake system	All models	AH42.00-P-0003-01A
	Ignition OFF		
1	Remove washer fluid reservoir		
2	Unscrew hydraulic lines from traction systems hydraulic unit	Plug hydraulic lines and connections with blind plugs to prevent brake fluid running out. Label hydraulic line in relation to appropriate connection before unscrewing to prevent mixing up lines and hoses. Installation: Pay attention to the markings when screwing on the hydraulic lines. Do not misconnect hydraulic lines. Trace line routing to the corresponding wheel if necessary.	
			BA42.40-P-1001-01A
		Set of plugs	129 589 00 91 00
		Box wrench bit	000 589 75 03 00
		Box wrench bit	140 589 00 03 00
3	Remove left fender liner		AR88.10-P-1300GH
4	Disconnect 15-pin connector from hydraulic unit	Release bayonet lock.	
5	Remove the hydraulic unit.	Unscrew hydraulic unit from	

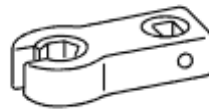
		retaining plate and remove sideways through the wheelhouse after unclipping the transfer case vent line and unscrewing the retaining bolts for the hydraulic unit. Pull the retaining plate upwards out of the rubber mounts if necessary.	
6	Install in the reverse order	i Rinse off any escaped brake fluid with water.	
7	Bleed brake system		AR42.10-P-0010GH
8	Fault memory	i Read out and erase fault memory, see Diagnosis Manual, Chassis, Volume 3.	

Nm Acceleration Slip Regulation (ASR)

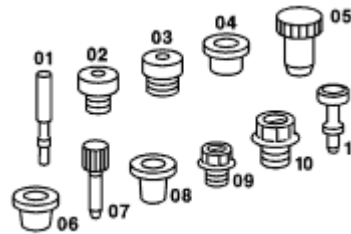
Number	Designation		Model 163
BA42.40-P-1001-01A	Brake line to ASR / ETS hydraulic unit	Nm	15



000 589 75 03 00
Box wrench bit



140 589 00 03 00
Box wrench bit



129 589 00 91 00
Set of plugs