

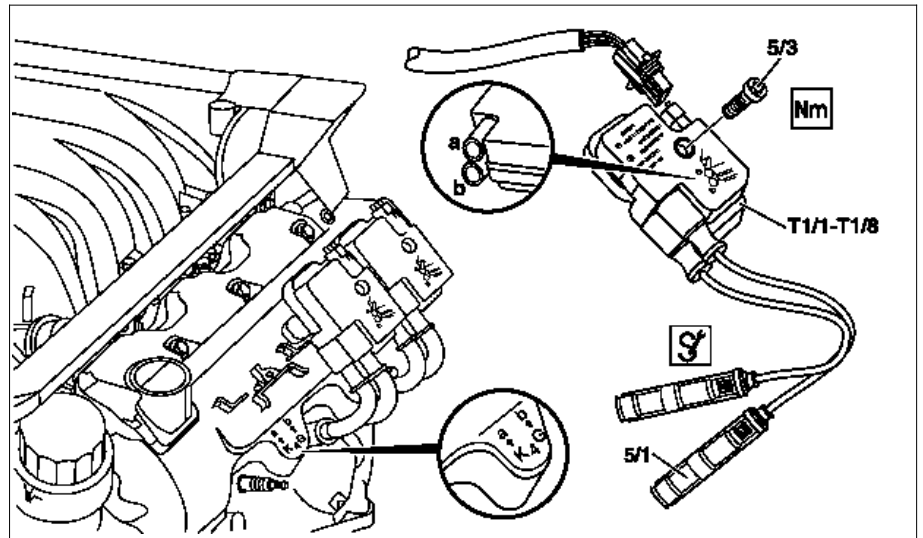
Engine	112.910 in model 202.026/086
Engine	112.912 in model 203.061/261, 209.361/461
Engine	112.913 in model 211.061/261
Engine	112.916 in model 203.081/281
Engine	112.917 in model 211.080/280
Engine	112.920 in model 202.029/089
Engine	112.921 in model 210.063/081/263/281
Engine	112.922 in model 220.063/163
Engine	112.923 in model 129.059
Engine	112.940 in model 208.365/465
Engine	112.941 in model 210.065/082/265/282
Engine	112.942 in model 163.154
Engine	112.943 in model 129.064
Engine	112.944 in model 220.065/165
Engine	112.945 in model 463
Engine	112.946 in model 203.064/264
Engine	112.947 in model 170.465
Engine	112.949 in model 211.065/265
Engine	112.953 in model 203.084/284
Engine	112.954 in model 211.082/282
Engine	112.955 in model 209.365/465
Engine	112.960 in model 170.466
Engine	112.961 in model 203.065/265
Engine	112.970 in model 163.157
Engine	112.972 in model 220.067/167
Engine	112.973 in model 230.467
Engine	112.975 in model 220.087/187
Engine	113.940 in model 210.070/270
Engine	113.941 in model 220.070/170
Engine	113.942 in model 163.172
Engine	113.943 in model 208.370/470
Engine	113.944 in model 202.033/093
Engine	113.948 in model 220.083/183
Engine	113.960 in model 215.375, 220.075/175/875
Engine	113.961 in model 129.068
Engine	113.962/982 in model 463
Engine	113.963 in model 230.475
Engine	113.965 in model 163.175
Engine	113.966 in model 220.084/184
Engine	113.967 in model 211.070/270
Engine	113.968 in model 209.375/475
Engine	113.969 in model 211.083/283
Engine	113.980 in model 210.074/274
Engine	113.981 in model 163.174
Engine	113.984 in model 208.374/474
Engine	113.986 in model 215.373, 220.073/173
Engine	113.987 in model 209.376/476
Engine	113.988 in model 203.076/276
Engine	113.989 in model 171.473
Engine	113.990 in model 211.076/276
Engine	113.991 in model 215.374, 220.074/174
Engine	113.992 in model 230.474
Engine	113.993 in model 463.270/271
Engine	113.995 in model 230.472

Modification notes

16.05.2006	Disconnect/connect battery ground line removed	Model 203, 209,	
------------	--	-----------------	--

Shown on engine 112

- 5/1 Spark plug connector
- 5/3 Screw
- T1/1 Cylinder 1 ignition coil
- T1/2 Cylinder 2 ignition coil
- T1/3 Cylinder 3 ignition coil
- T1/4 Cylinder 4 ignition coil
- T1/5 Cylinder 5 ignition coil
- T1/6 Cylinder 6 ignition coil
- T1/7 Cylinder 7 ignition coil
- T1/8 Cylinder 8 ignition coil
- Pfeil Marking of the connector



P15.12-2045-05

	Remove/install		
	Risk of death when working on component parts and systems with U >= 30 V alternating voltage (AC) or U >= 60 V direct voltage (DC)	Do not touch damaged or defective live component parts and lines or non-insulated electrical connections and lines.	AS00.00-Z-0035-01A
	Notes on avoiding damage to ignition system		AH15.10-P-0002-01D
1	Deactivate service mode in TELE AID emergency call system Information on Tele Aid emergency call system	Model 463.270 with code ET2 (MB telephone with integrated TELEAID emergency call system) Typ 463.243/244/245/247/248/250/254/270/309/322/323/352/333 mit Code ET2 (MB-Telefon mit integriertem Notrufsystem Tele Aid) i Only for model 463.270 with code ET2 (MB telephone with integrated TELEAID emergency call system).	AR82.95-P-0005-03GR AH82.95-P-0001-01GA
2	Detach ground line from battery	Model 463 except (463.241/248) Model 463.241 with code 979 (MB Guard special protection package) with code E26 (additional battery) with code ZS4 (special protection version FB4) or with code ZS6 (special protection version FB6) or with code ZS7 (special protection version FB7) Model 463.248 with code 979 (MB Guard special protection package) with code E26 (additional battery) with code ZS6 (special protection version FB6) or with code ZS7 (special protection version FB7)	AR54.10-P-0003G AR54.10-P-0003PV AR54.10-P-0003PM
3	Undip cover on the engine front side	Model 211, 215, 220, 230.475/476	
4.1	Remove the engine cover with integrated air filter	Except model 170.466, 203.065/076/265/276, 209.376/476 as from 24.4.04, 211.076/276, 215.374, 220.074/174, 230.474, 463.270/271 i The air filter is integrated in the engine cover. Detach engine cover or air filter housing vertically upward from the cylinder head covers.	
4.2	Remove air filter housing	Air filter not integrated Remove/install air filter housing Model 170.466, model 203.065/265, model 211.076/276, model 215.374, 220.074/174, model 230.474 Remove/install air filter housing Model 171.473, model 203.076/276, model 209.376/476 as from 24.04.04 Remove/install air filter housing Model 463.270/271	AR09.10-P-1150SVK AR09.10-P-1150AC AR09.10-P-1150GX
5	Remove screw (5/3)	Nm Screw/bolt, ignition coil to cylinder head cover	*BA15.10-P-1001-04A
6	Detach spark plug connector (5/1) from the spark plugs	i Pry off spark plug connector (5/1) with double open-end wrench above the cylinder head cover from the spark plugs.	

		<p>i Installation: Observe marking of the connector (arrow) on the cylinder head cover and ignition coil for cylinders 1 to 6 or 1 to 8 for the associated spark plug connector (5/1).</p> <p>S Double open-ended wrench</p>	*110589010100
7	Disconnect electrical connector of the ignition coil for cylinders 1 to 6 (T1/1 to T1/6) or 1 to 8 (T1/1 to T1/8)	i Installation: Replace cable tie.	
8	Remove ignition coil for cylinders 1 to 6 (T1/1 to T1/6) or 1 to 8 (T1/1 to T1/8)		
9	Install in the reverse order		
10	<p>Activate Service mode in Tele-Aid emergency call system</p> <p>Information on Tele Aid emergency call system</p>	<p>Activate/deactivate service mode in TELE AID emergency call system</p> <p>Only for model 463.270 up to 01.04.07 up to model year 2019 with code ET2 (MB telephone with integrated TELEAID emergency call system)</p> <p>Typ 463.243/244/245/247/248/250/254/270/309/322/323/332/333 mit Code ET2 (MB-Telefon mit integriertem Notrufsystem Tele Aid)</p> <p>i Only on model 463.270 with Tele-Aid car telephone emergency call system, code ET2.</p>	<p>AR82.95-P-0005-03GR</p> <p>AH82.95-P-0001-01GA</p>

Nm Ignition coil

Number	Designation	Engine 112, 113
BA15.10-P-1001-04A	Screw/bolt, ignition coil to cylinder head cover	Nm 8 =5.9 ft. lbs

