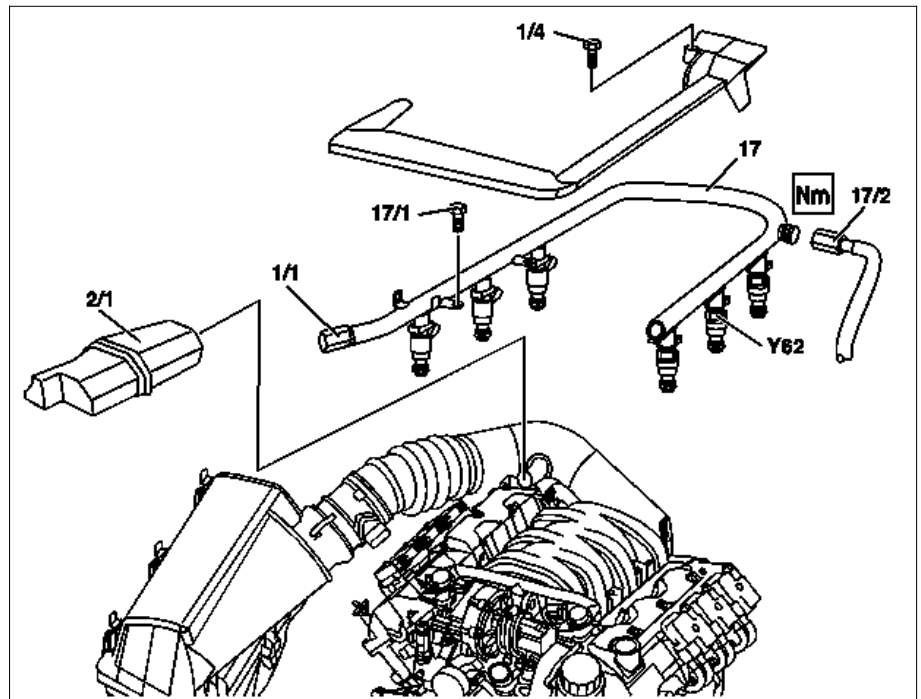


ENGINE	112.910 in MODEL 202.026 /086
ENGINE	112.920 in MODEL 202.089 /029
ENGIN	112.921 in MODEL 210.081 /281 /063 /263
ENGINE	112.923 in MODEL 129.059
ENGINE	112.940 in MODEL 208.365 /465
ENGINE	112.941 in MODEL 210.282 /065 /082 /265
ENGINE	112.942 in MODEL 163.154
ENGINE	112.943 in MODEL 129.064
ENGINE	112.970 in MODEL 163.157
ENGINE	113.940 in MODEL 210.070 /270
ENGINE	113.961 in MODEL 129.068
ENGINE	113.980 in MODEL 210.074 /274
ENGINE	113.944 in MODEL 202.033 /093
ENGINE	113.942 in MODEL 163.172
ENGINE	113.943 in MODEL 208.370 /470
ENGINE	113.984 in MODEL 208.374
ENGINE	113.981 in MODEL 163.174
ENGINE	113.965 in MODEL 163.175


Shown on M112

1/1	Service valve
1/4	Bolt
2/1	Resonance housing
17	Fuel distributor
17/1	Bolts
17/2	Feed line
Y62	Fuel injection valves



P07.40-0217-06

	Remove/install		
	Risk of explosion caused by fuel igniting, risk of poisoning caused by inhaling and swallowing fuel and risk of injury to eyes and skin caused by contact with fuel	No fire, sparks, open flames or smoking. Only pour fuels into suitable and appropriately marked containers. Wear protective clothing when handling fuel.	AS47.00-Z-0001-01A
1.1	Remove cover on front side of engine	i Model 129.	
2	Remove cylinder head cover trim panel or air filter	i Remove cylinder head cover trim or air filter by lifting upwards from the cylinder head covers.	
3.1	Take off resonance housing (2/1)	i Only on model with air filter attached to vehicle.	
4	Remove plastic cover	i Remove bolt (1/4).	
5	Release fuel pressure through service valve (1/1)	i Make sure to collect fuel. S Pressure hose	*119589046300
6	Detach feed line (17/2)	i Make sure to collect fuel. i M112: ↓ Nm i M113: ↓ Nm	*BA07.52-P-1001-01A *BA07.52-P-1001-01A
7	Separate electrical connector at fuel injection valves (Y62)		

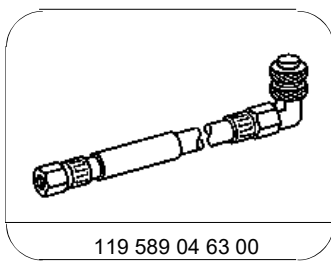
8	Take out screws (17/1), lift fuel rail (17) together with all injectors off the intake manifold	<i>i</i> Inspect O-rings for damage. <i>i</i> Oil O-rings before installing the fuel rail. ↓ Remove/install injection valves (ME-SFI)	AR07.03-P-6520A
	Checking		
9	Test fuel injectors (Y62)	<i>i</i> Refer to DMAN Engine, Volume 4, Index 31/1	
10	Install in the reverse order		

Nm Fuel distributor

Number	Designation	Engine
		112 except 112.945/951/ 960/961
BA07.52-P-1001-01A	Fuel feed line to fuel distributor	Nm 38

Nm Fuel distributor

Number	Designation	Engine
		113.940/941/ 942/943/944/ 945/946/948/ 960/961/962/ 963/964/965/ 966/967/968/ 969/971/980/ 981/982/984/ 986/988
BA07.52-P-1001-01A	Fuel feed line to fuel distributor	Nm 38



119 589 04 63 00

Pressure hose