

**2006 Mercedes Benz Truck ML 500 (164.175) V8-5.0L (113.964)**

Vehicle » Technical Service Bulletins » All Technical Service Bulletins » Lighting - Stop/Tail Light Not Illuminating With DTC's

Stop / Tail Light not Illuminating with DTCs 9102, 9103, 9106, 9107, 9126, 9127 or 9136

Topic number LI82.10-P-045622

Version 4

Design group 82.10 Exterior lights

Date 11-20-2009

Validity Model 164.122/125/172/175/177/186  
Model 251.122/156/165/175/177

Reason for change Cable Tie part number included

Reason for block

Complaint:

Stop/Tail Light not Illuminating with DTCs 9102, 9103, 9106, 9107, 9126, 9127 or 9136

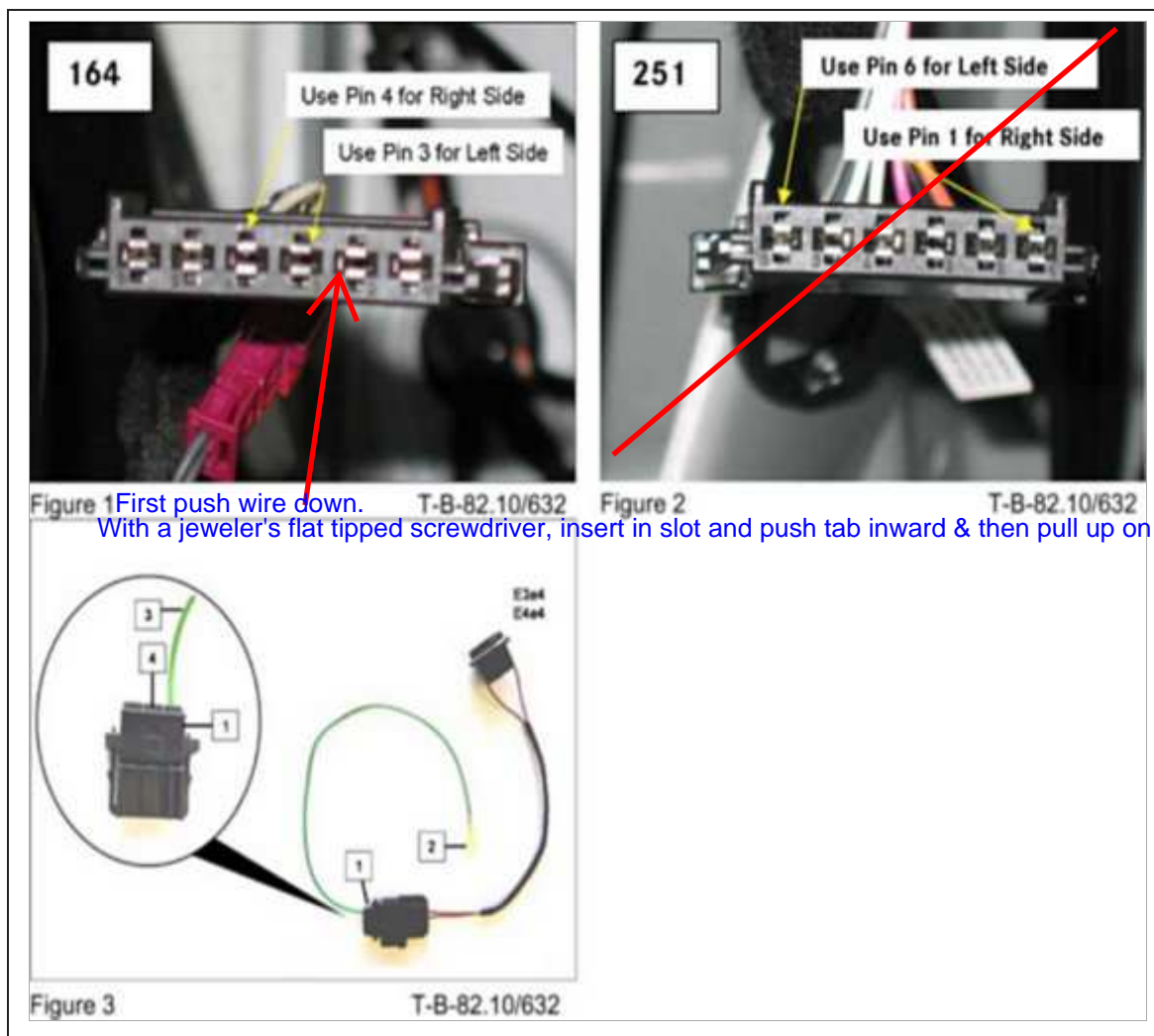
(Vehicles without LED tail lamps)

Cause:

N/A

Remedy:

1. Remove trim in cargo area to gain access to tail lamp housing.
2. Twist and remove stop bulb socket (E3e4 on 164 or E3e9 on 251) from the housing.
3. Unplug the electrical connector from the tail lamp housing.



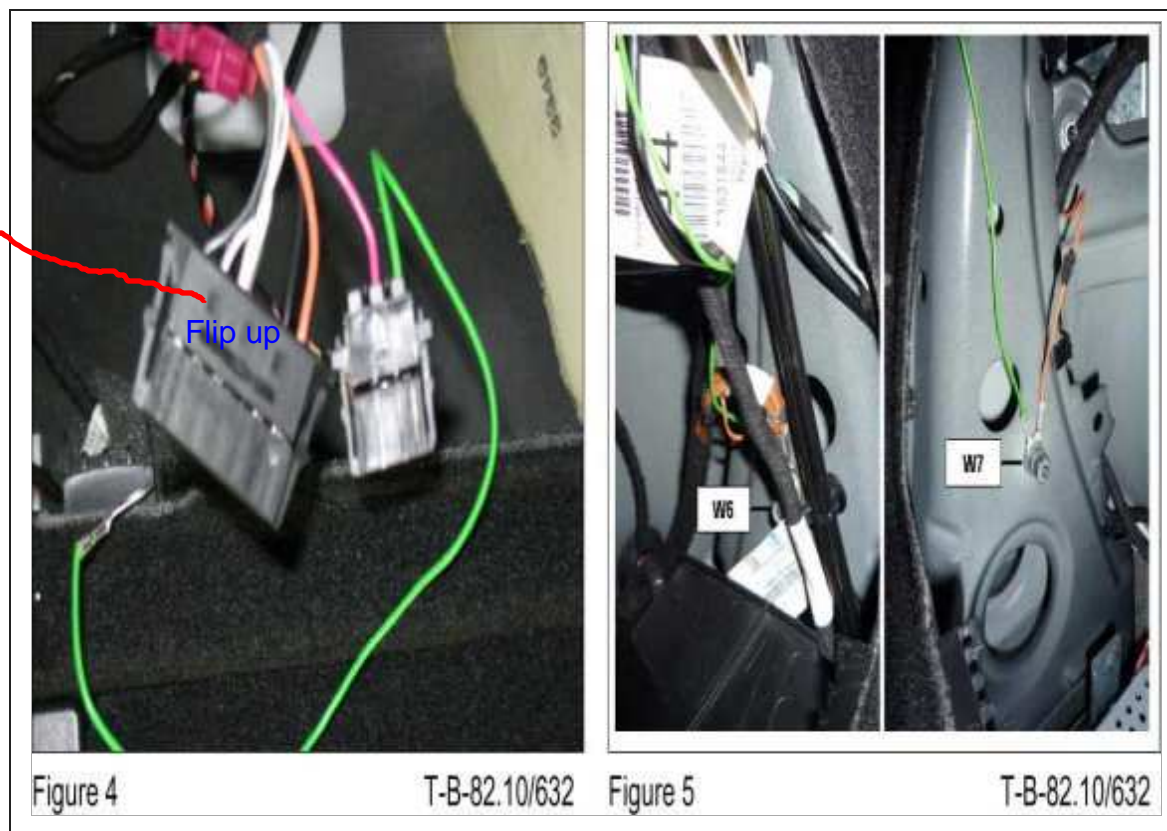
Figures 1, 2 and 3

4. Remove the pin from the actuation line connector for the stop light (Figure 1 or Figure 2).

**Note:**

Open locking catch otherwise the contacts may be irreparably damaged (AR00.19-0120-02B).

5. Pull on the wire as the pin removal tool is inserted to remove the wire.



Figures 4 and 5

6. Insert actuation line for stop light into repair harness connector pin 2 (Figure 3, 4) and (Figure 4).

7. Plug connector of repair harness into the socket of the repair harness.

**Note:**

Confirm the housing clicks into place.

8. Attach repair harness to left wheel arch trunk line ground terminal W6, and right trunk line ground terminal W7 (Figure 5).

9. Install bulb in socket of repair harness.

10. Install socket into the rear tail lamp housing.

11. Reconnect electrical connector to the tail lamp housing.

12. Fasten repair harness along original harness with one cable tie for the 251 or two cable ties for the 164 to prevent the movement of the connector on the repair harness.

13. Repeat for stop lamp (Ee4e4 on 164 or E4e9 on 251) on other side.

Attachments	
File	Designation
Figure1_3.jpg	Figure 1-3
Figure4_5.jpg	Figure 4-5

Attachments

## Symptoms

Overall vehicle / Lighting / Exterior lights / Brake lights / Brake light / Nonfunctional

## Symptoms

## Control unit/fault code

Control unit	Fault code	Fault text
REAR SAM-Rear signal acquisition and actuation module (SAMH7)	9126	WITHOUTCode 849 (Spare tire holder/spare tire)USA, Canada:Component E3e8 (Left taillamp, side-marker lamp, parking lamp) or line to component has short circuit to ground.-WITHCode 849 (Spare tire holder/spare tire)USA, Canada:Component E3e6 (Left side marker lamp) or line to component has short circuit to ground.
REAR SAM-Rear signal acquisition and actuation module (SAMH7) (R-Class 251)	9126	Component E3e9 (Left stop lamp, taillamp, parking lamp and side-marker lamp) or line to component has short circuit to ground. ((BAUREIHE@251))
REAR SAM-Rear signal acquisition and actuation module (SAMH7) (R-Class 251)	9127	Component E3e9 (Left stop lamp, taillamp, parking lamp and side-marker lamp) or the line to the component has a short circuit to positive or open circuit. ((BAUREIHE@251))
REAR SAM-Rear signal acquisition and actuation module (SAMH7)	9127	WITHOUTCode 849 (Spare tire holder/spare tire)USA, Canada:Component E3e8 (Left taillamp, side-marker lamp, parking lamp) or the line to the component has a short circuit to positive or open circuit.-WITHCode 849 (Spare tire holder/spare tire)USA, Canada:Component E3e6 (Left side marker lamp) or the line to the component has a short circuit to positive or open circuit.
REAR SAM-Rear signal acquisition and actuation module (SAMH7)	9136	WITHOUTCode 849 (Spare tire holder/spare tire):Component E4e8 (Right taillamp, side-marker lamp, parking lamp) or line to component has short circuit to ground.-WITHCode 849 (Spare tire holder/spare tire)USA, Canada:Component E4e6 (Right side marker lamp) or line to component has short circuit to ground.
REAR SAM-Rear signal acquisition and actuation module (SAMH7) (R-Class 251)	9136	Component E4e9 (Right stop lamp, taillamp, parking lamp and side-marker lamp) or line to component has short circuit to ground. ((BAUREIHE@251))

## Control unit/fault code

## Parts

Part number	Designation	Quantity	Note	EPC net	Non-EPC
A164 826 00 07	Repair kit	2			X
A002 997 24 90	Cable tie 2.8 x 100 mm	1 or 2		X	

## Parts

## Work units

Op. no.	Operation text	Time	Damage code	Note
			82380 74	Refer to Warranty Matrix via Netstar - VMI - Enter VIN - DTB / LI - Find Document Number - "Related Warranty Information" link OR "Print Warranty Information" link

## Work units

WIS-References			
Document number	Title	Note	Allocation
AR00.19-0120-02B	Remove contacts from sensor laminated contact coupling		Remedy

## WIS-References

Validity		
Vehicle	Engine	Transmission
164.122	*	*
164.125	*	*
164.172	*	*
164.175	*	*
164.177	*	*
164.186	*	*
251.122	*	*
251.156	*	*
251.165	*	*
251.175	*	*
251.177	*	*

## Validity