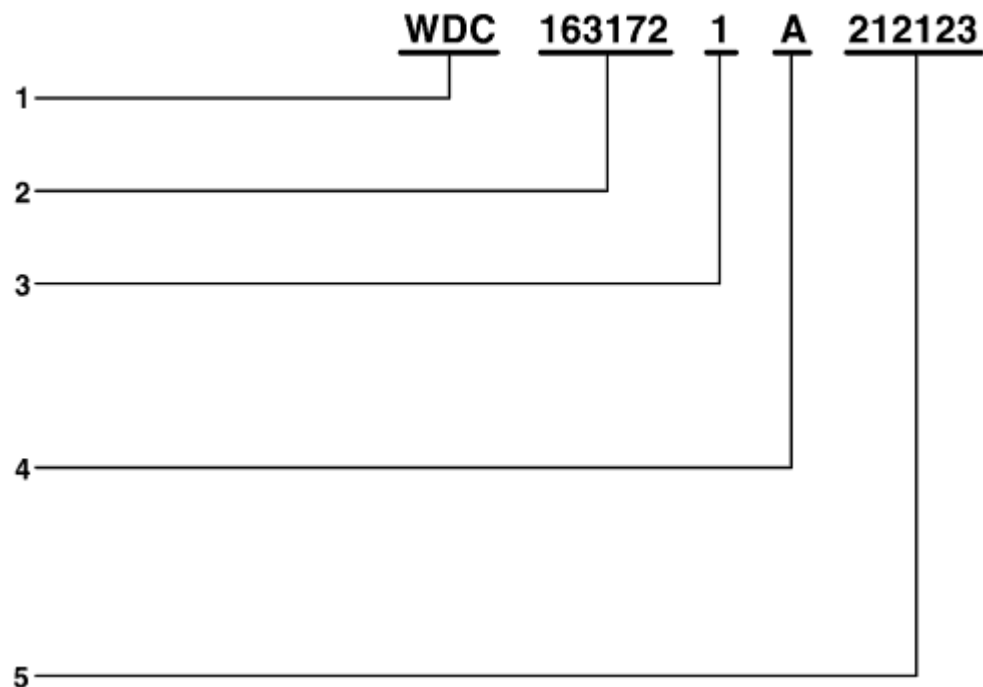


AH00.00-P-2000-01GH	Chassis number breakdown	Model 163	i
---------------------	--------------------------	-----------	----------

i Valid for all ECE vehicles without code 986 except NAFTA .



P00.00-3147-06

1 World manufacturer code:
WDC=MBUSI

2 Vehicle model
163=M-class
163.154=ML 320,
163.172=ML 430, 163.174=ML 55 AMG, 163.175=ML 500

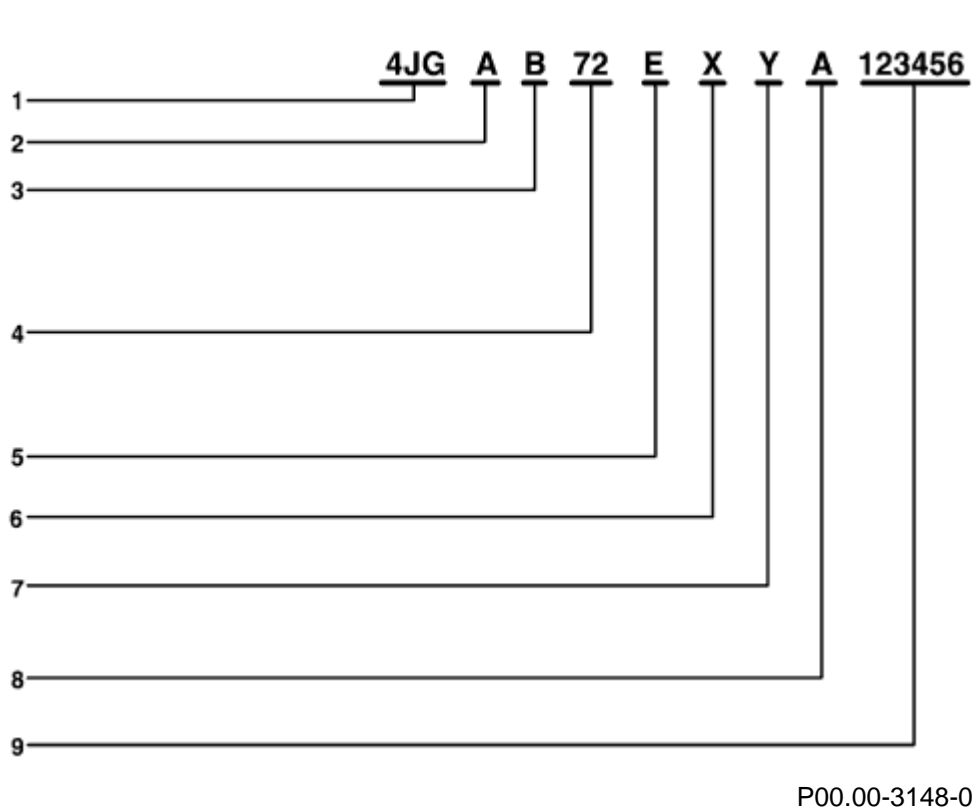
3 Steering
1 LHS vehicle
2 RHS4 Manufacturing plant

A Tuscaloosa
X Graz

5 Chassis number (production consecutive number)

i Begins in the case of vehicles of Graz production with a "7" vehicle

i Valid for all NAFTA vehicles and ECE vehicles with code 986



1 Manufacturer:
4JG=MBUSI

2 Model:
A=163 = M-class

3 Body version:

A=Sedan; B=Sedan, long
C=T-model; D=Coupé
E=Cabriolet/Roadster; M=AMG vehicle

4 Model designation:

13= ML 270, 28=ML 400, 36=ML 230, 54=ML 320,
72=ML 430, 74=ML 55 AMG, 75=ML 500

5 Weight class:

E=2723 - 3175 kg

6 Test digit

7 Model year:

W=1998, X=1999, Y=2000, 1=2001, 2=2002

8 Manufacturing plant:

A=Tuscaloosa
X=Graz

9 Chassis number (production consecutive number)

i Begins in the case of vehicles of Graz production with a "7"