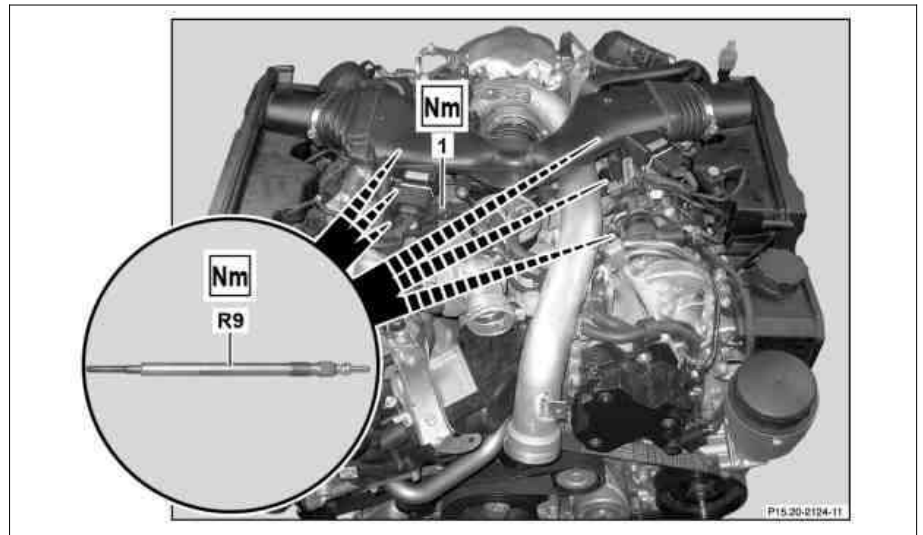


Engine 642 in model 164, 251

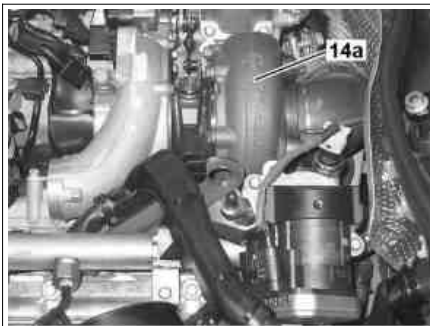
Modification notes

19.05.2017	Special tool added	Operation step 6, 8	001 589 78 09 00
16.05.2017	Safety note added	AS20.40-Z-0001-01A	
12.05.2017	"Technical note" added	AH54.00-P-0001-01A	
10.05.2017	"Technical note" added	AH00.00-P-5000-01A	
10.05.2017	Safety note added	AS00.00-Z-0017-01A	

1 Distributor leak oil line
R9 Glow plugs



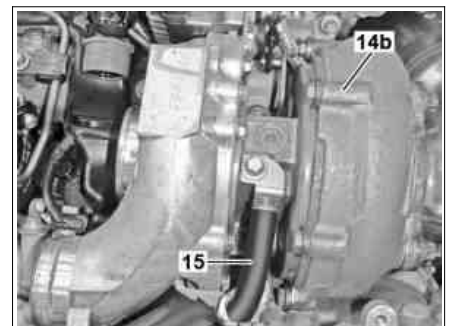
P15.20-2275-05



P09.40-2385-01

ATL without coolant cooling
14a Turbocharger

ATL with coolant cooling
14b Turbocharger



P09.40-2386-01

⚠ Warning	Risk of injury due to fan starting unexpectedly	Do not reach into the rotation or hazard area of the fan. Wear closed and close-fitting work clothes.	AS20.40-Z-0001-01A
⚠ Caution	Risk of injury caused by scraping or cutting body parts on sharp vehicle parts	Always wear protective gloves when working on or near sharp and non-deburred vehicle parts. Deburr repair panels.	AS00.00-Z-0017-01A
⚠ Warning	Risk of injury. Skin or eye injuries may result when handling hot or glowing objects.	Wear protective gloves, protective clothing and safety glasses, if necessary.	AS00.00-Z-0002-01A
Topical note	Information on preventing damage to electronic components due to electrostatic discharge		AH54.00-P-0001-01A
Topical note	Notes on avoiding damage through contamination and foreign objects		AH00.00-P-5000-01A
Topical note	Notes for ceramic glow plugs		AH15.20-P-0001-01A
🔧	Remove		
1.1	Removes strut tower brace	Engine 642 in model 164.8 i Remove strut tower brace from strut tower mounts.	AR62.30-P-2500GY
1.2	Remove partition wall between wheel wells	Engine 642 in model 251	

			AR62.30-P-2400RT
2	Remove engine cover	Engine 642 in model 164 Engine 642 in model 251	AR01.10-P-2405GZB AR01.10-P-2405RTB
3	Remove engine air intake duct downstream of air filters		AR09.10-P-8130GZB
4.1	Remove leak oil line (1) distributor	Only on vehicles with turbocharger (14a) without coolant cooling.	
4.2	Remove engine wiring harness from fuel rail	Only on vehicles with turbocharger (14b) with coolant cooling.	
5	Release and disconnect electrical connections of glow plugs (R9)	Pliers	*611589003700
6	Remove glow plugs (R9)	 If release torque of glow plugs (R9) is greater than 25 Nm, bringing the engine to operating temperature is recommended. To prevent glow plugs (R9) from tearing off. Socket wrench Wrench socket	*001589780900 *001589800900
	Check		
7	Check glow plug wells for contamination	Commercially available devices/tools Cylinder brush, Perlon, Ø 6 mm Cylinder brush, Perlon, Ø 10 mm In the case of complaints. ↓ Clean glow plug wells.	
	Install		
8	Screw in glow plugs (R9)	Glow plug to cylinder head Socket wrench Wrench socket	*BA15.20-P-1001-01F *001589780900 *001589800900
9	Connect electrical connections to glow plugs (R9)		
10.1	Attach engine wiring harness to fuel rail	Only on vehicles with turbocharger (14b) with coolant cooling. Replace removed cable ties.	
10.2	Attach leak oil line (1) distributor	Only on vehicles with turbocharger (14a) without coolant cooling. Leak oil line to charge air distribution line	*BA07.16-P-1023-01C
11	Install engine air intake duct after air filters		AR09.10-P-8130GZB
12	Install engine cover	Engine 642 in model 164 Engine 642 in model 251	AR01.10-P-2405GZB AR01.10-P-2405RTB
13.1	Install strut tower brace	Engine 642 in model 164.8	AR62.30-P-2500GY
13.2	Install partition wall between the wheel wells	Engine 642 in model 251	AR62.30-P-2400RT

Common rail diesel injection system (CDI)

Number	Designation	Engine 642		
BA07.16-P-1023-01C	Leak oil line to charge air distribution line	M6 × 23	Nm	12

Preglow system

Number	Designation	Engine 642		
BA15.20-P-1001-01F	Glow plug to cylinder head	M8	Nm	11
		M10	Nm	18

