

**Document number:** pe54.21-p-2114-97mad

**Document title:** Wiring diagram for front signal acquisition and actuation module (SAM) control unit

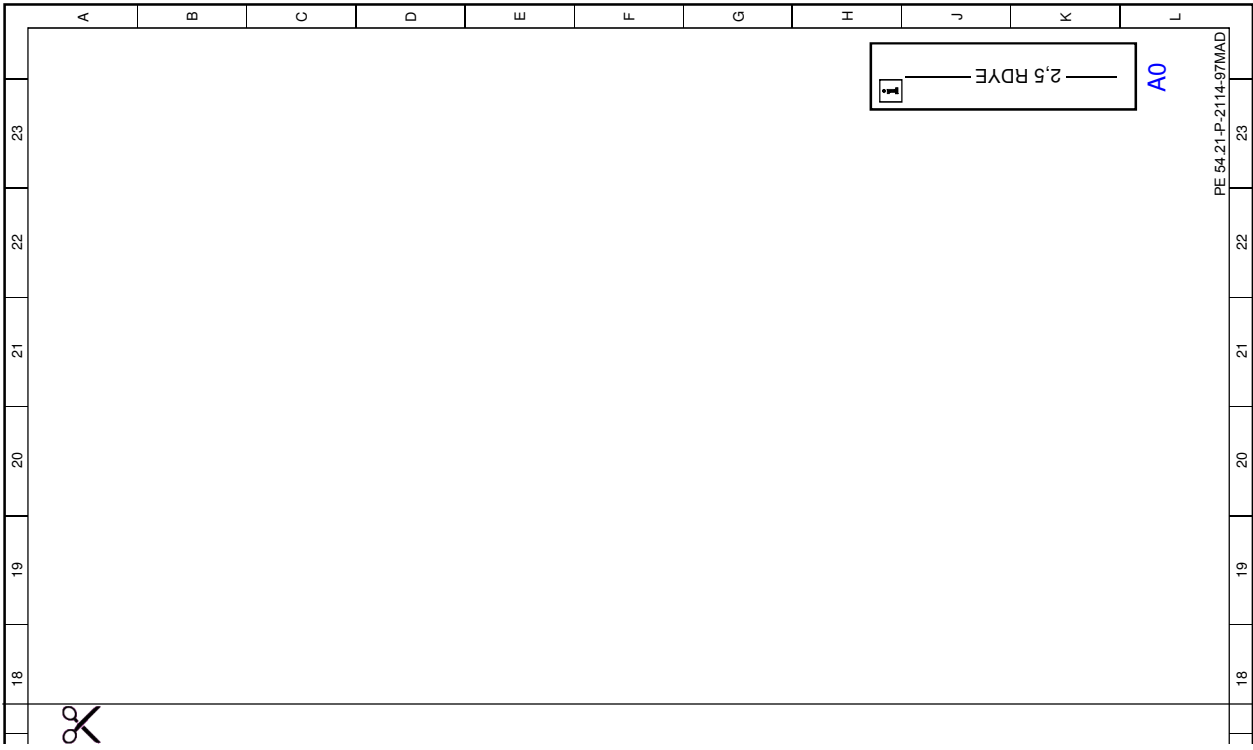
**Code:**

A0	Color code key
E1	Left front lamp unit
E1	Left front lamp unit
E1	Left front lamp unit
E1e1	Left high beam
E1e1	Left high beam
E1e2	Left low beam
E1e3	Left standing and parking lamp
E1e3	Left standing and parking lamp
E1e5	Left turn signal lamp
E1e5	Left turn signal lamp
E1e6	Left side-marker lamp
E1e6	Left side-marker lamp
N10	Front SAM control unit
N10	Front SAM control unit
U151	Valid for engine 113
U501	Valid for xenon headlamps
U681	Valid for all except M113
W9	Ground (left front, at lamp unit)
W9	Ground (left front, at lamp unit)
X25/2	Engine compartment/interior compartment connector
X25/2	Engine compartment/interior compartment connector
X25/2	Engine compartment/interior compartment connector

**Designation:**

23L
11L
7L
4L
2L
9L
8L
11L
4L
10L
3L
13L
6L
5A
12A
1A
7H
8A
5G
11G
3E
2E
9E





Cut here