



W/X 166 – Sealing bodyshell openings

Page 1-19

Date of issue: 2016.10.21
GSP/TPB I



Mercedes-Benz

Contents

1. BR166 – Sealing bodyshell openings

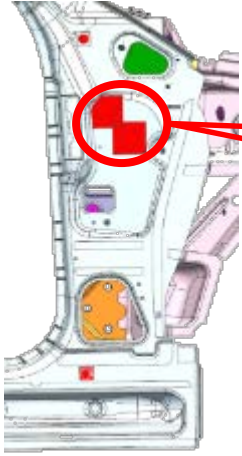


2. Replacement parts



BR166 - Sealing bodyshell openings

Fault location
A-pillar, top, inside



Item number
A 001 998 81 50



Bodyshell holes open



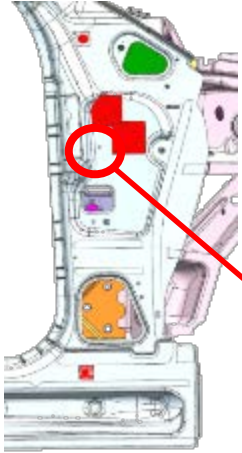
Bodyshell holes sealed



Note: Perform task on left- and right-hand sides

BR166 - Sealing bodyshell openings

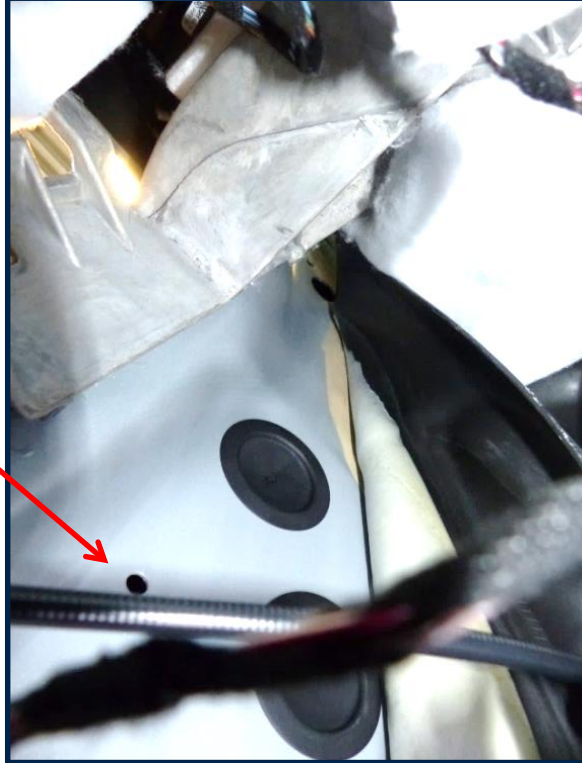
Fault location
A-pillar, center, inside



Item number
A 006 989 30 85



Bodyshell holes open



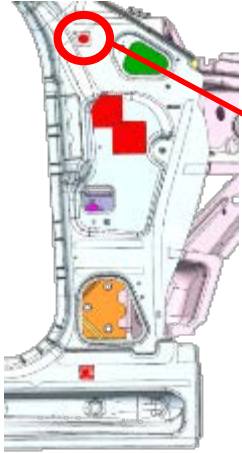
Bodyshell holes sealed



Note: Perform task on left- and right-hand sides

BR166 - Sealing bodyshell openings

Fault location
A-pillar, top, inside



Item number
A 003 997 55 86



Bodyshell holes open



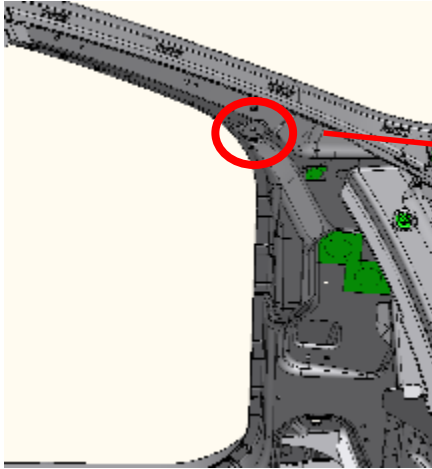
Bodyshell holes sealed



Note: Perform task on left- and right-hand sides.

BR166 - Sealing bodyshell openings

Fault location
A-pillar, top, inside



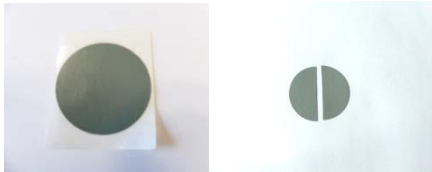
Bodyshell holes open



Bodyshell holes sealed



Item number
A 006 989 30 85

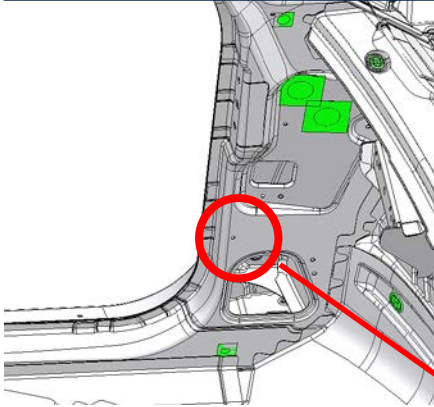


Adhesive pad, cut

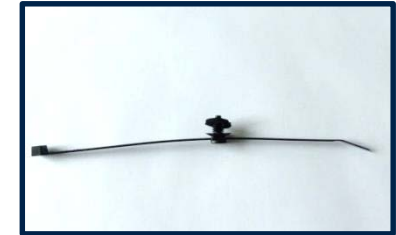
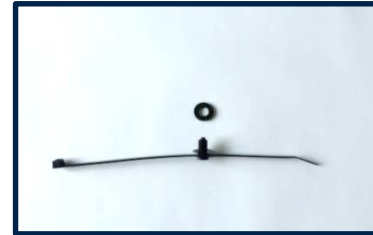
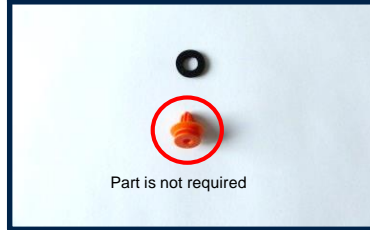
Note: Perform task on left- and right-hand sides. Adapt adhesive tape.

BR166 - Sealing bodyshell openings

Fault location
A-pillar, right

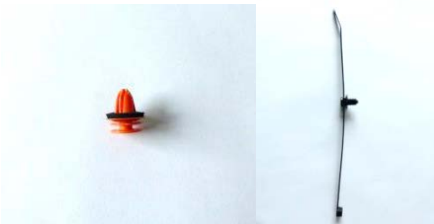


Preparatory steps



Item number

A 000 991 86 98
A 007 997 56 90



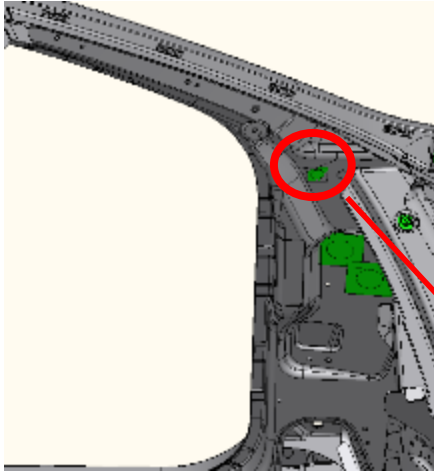
Bodyshell holes sealed



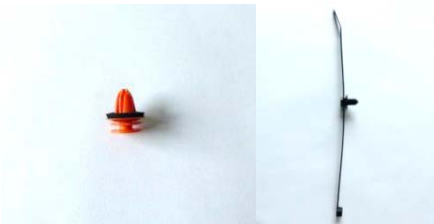
Note: Perform task on left-hand side. Check right-hand side (depending on equipment variant). Remove seal (black) of the plastic clip (orange) and install onto the cable strap to seal. Disconnect the cable fastening fixture from the cable harness (e.g. using side cutting pliers) and fasten with the prepared cable strap

BR166 - Sealing bodyshell openings

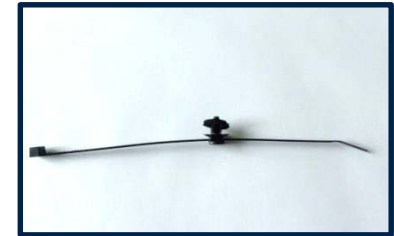
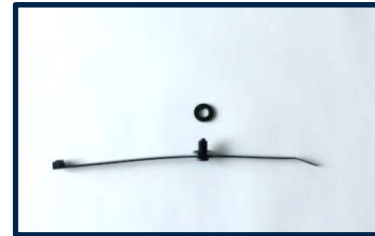
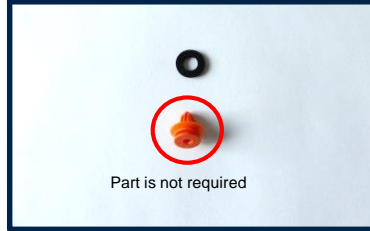
Fault location
A-pillar, top, inside



Item number
A 000 991 86 98
A 007 997 56 90



Preparatory steps



Bodyshell holes open



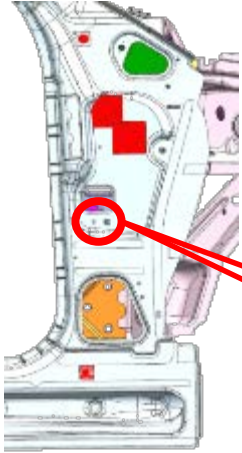
Bodyshell holes sealed



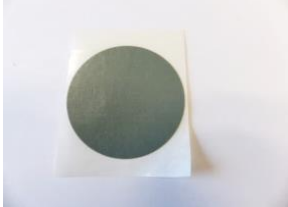
Note: Perform task on left-hand side. Check right-hand side (depending on equipment variant). Remove seal (black) of the plastic clip (orange) and install on the cable strap to seal. Disconnect the cable fastening fixture from the cable harness (e.g. using side cutting pliers) and fasten with the prepared cable strap

BR166 - Sealing bodyshell openings

Fault location
A-pillar, center, inside



Item number
A 006 989 30 85



Bodyshell holes open



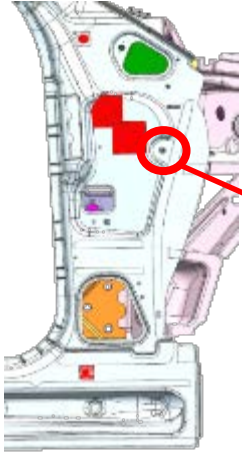
Bodyshell holes sealed



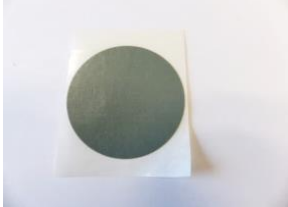
Note: Perform task on left- and right-hand sides. Adapt adhesive tape.

BR166 - Sealing bodyshell openings

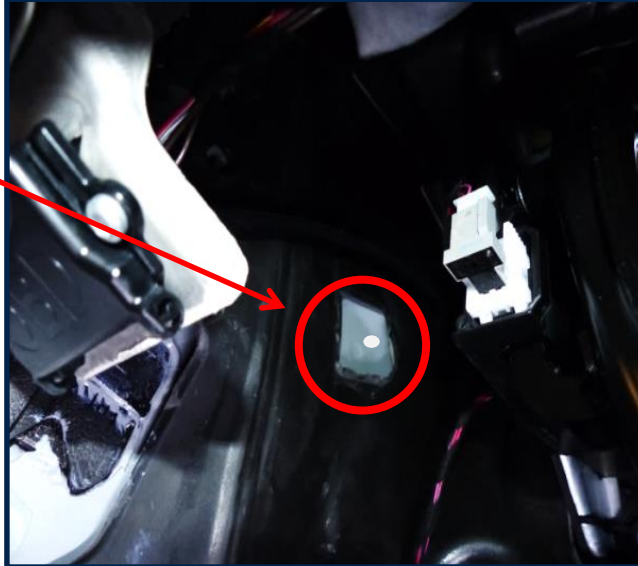
Fault location
A-pillar, center, inside



Item number
A 006 989 30 85



Bodyshell holes open



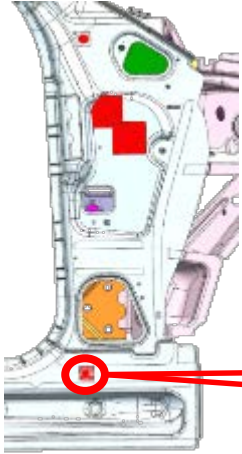
Bodyshell holes sealed



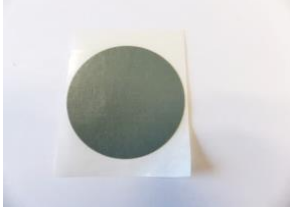
Note: Perform task on left- and right-hand sides (undo damping if necessary)

BR166 - Sealing bodyshell openings

Fault location
A-pillar, bottom, inside



Item number
A 006 989 30 85



Bodyshell holes open



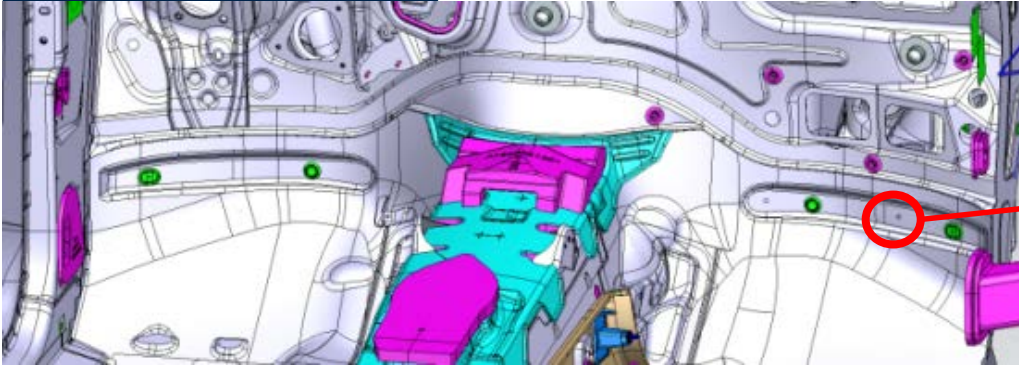
Bodyshell holes sealed



Note: Perform task on left- and right-hand sides

BR166 - Sealing bodyshell openings

Fault location
Bulkhead/pedal floor



Bodyshell hole open



Bodyshell hole sealed



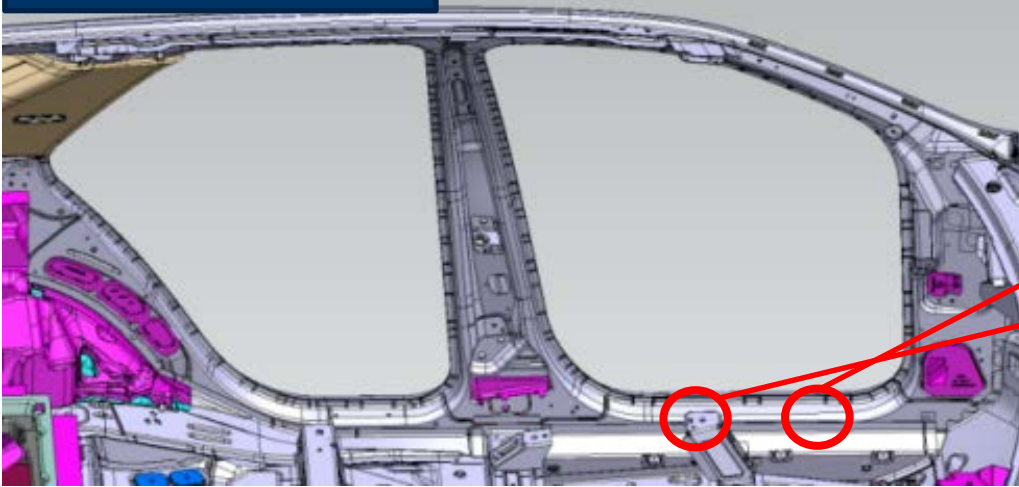
Item number
A 000 998 11 90



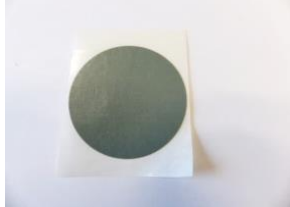
Note: Perform measure on the right-hand side for left-hand-drive vehicles.

BR166 - Sealing bodyshell openings

Fault location
Longitudinal member, inside,
front



Item number
A 006 989 30 85



Bodyshell holes open



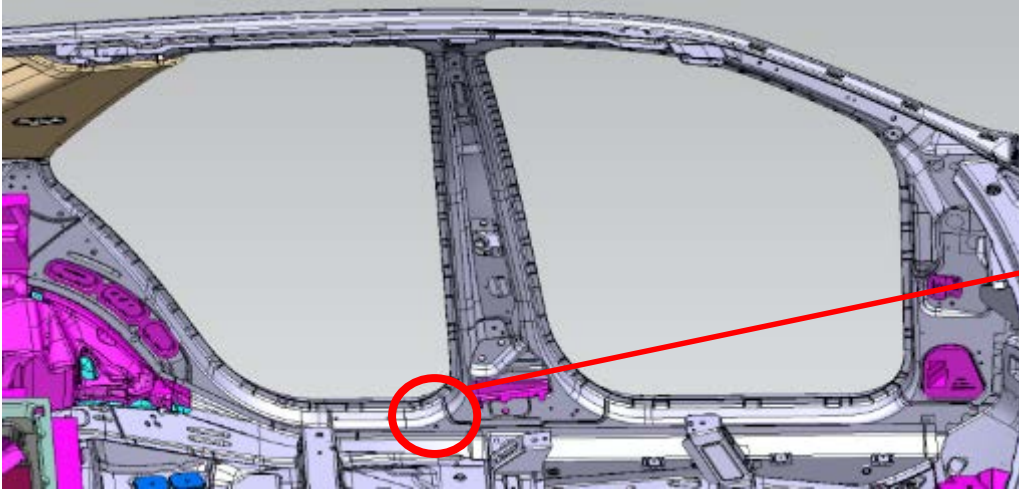
Bodyshell holes sealed



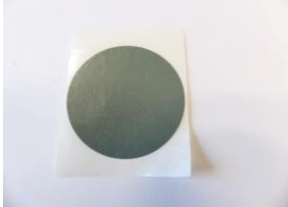
Note: Perform task on left- and right-hand sides. Bodyshell openings may or may not be present depending on the production year.

BR166 - Sealing bodyshell openings

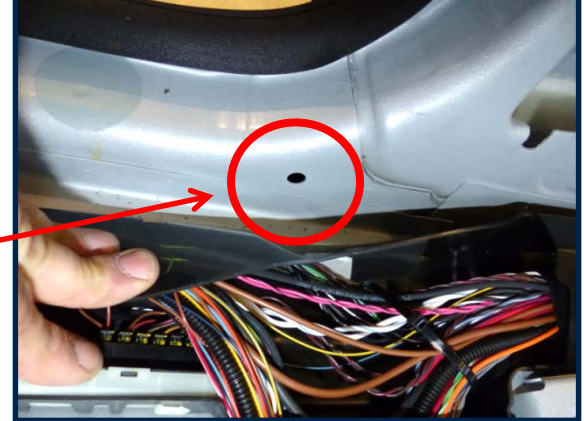
Fault location
B-pillar, bottom, inside



Item number
A 006 989 30 85



Bodyshell holes open



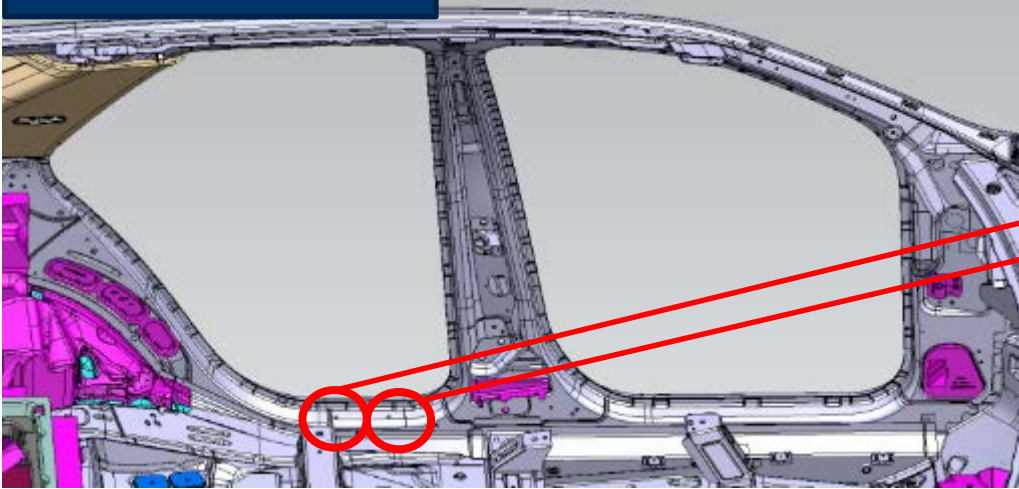
Bodyshell holes sealed



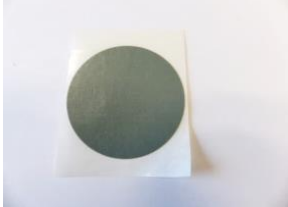
Note: Perform task on left- and right-hand sides. (Behind cable duct)

BR166 - Sealing bodyshell openings

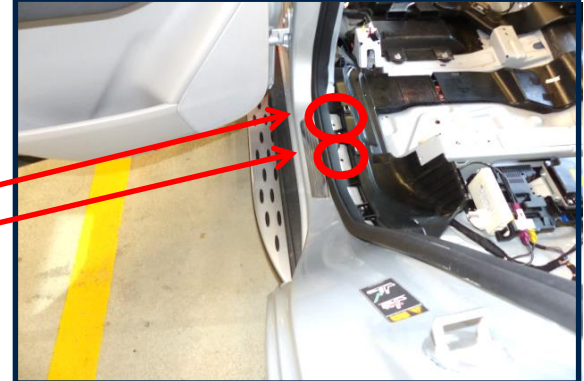
Fault location
Longitudinal member, inside,
rear



Item number
A 006 989 30 85



Bodyshell holes open



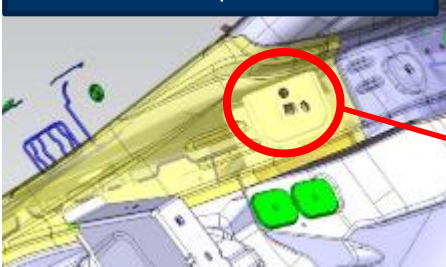
Bodyshell holes sealed



Note: Perform task on left- and right-hand sides. Bodyshell openings may or may not be present depending on the production year. Variant X166 has one additional bodyshell opening which must also be sealed.

BR166 - Sealing bodyshell openings

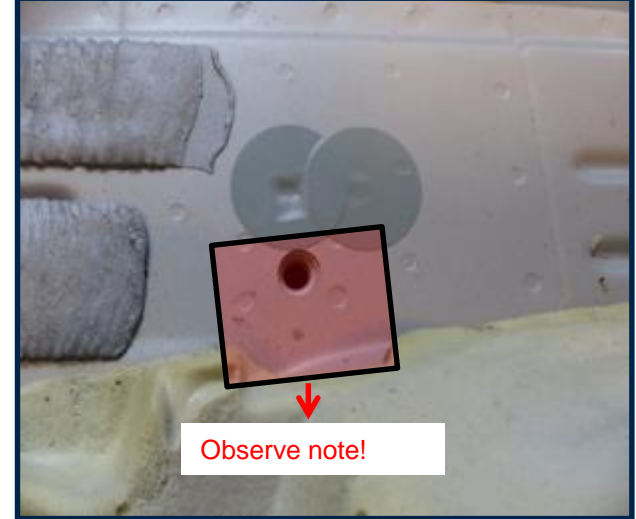
Fault location
Longitudinal member, rear, in
rear compartment



Bodyshell holes open



Bodyshell holes closed



Finish bodyshell holes



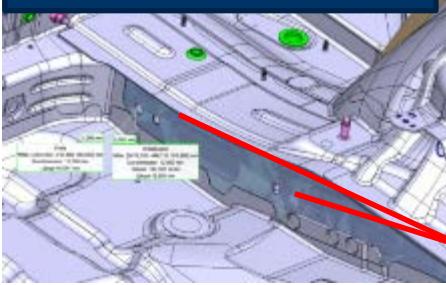
Item number
A 006 989 30 85



Note: Perform task on left- and right-hand sides. **Caution:** It must be ensured that there is no adhesive tape between the bodyshell and the seat belt holder (black). Adapt adhesive tape.

BR166 - Sealing bodyshell openings

Fault location
Longitudinal member, rear,
left



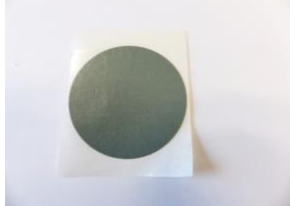
Bodyshell holes open



Bodyshell holes sealed



Item number
A 006 989 30 85



Note: Perform task on left-hand side. Two bodyshell holes are sealed with screws on vehicles with a trailer hitch. Variant X166 has one additional bodyshell opening which must also be sealed.

BR166 - Sealing bodyshell openings

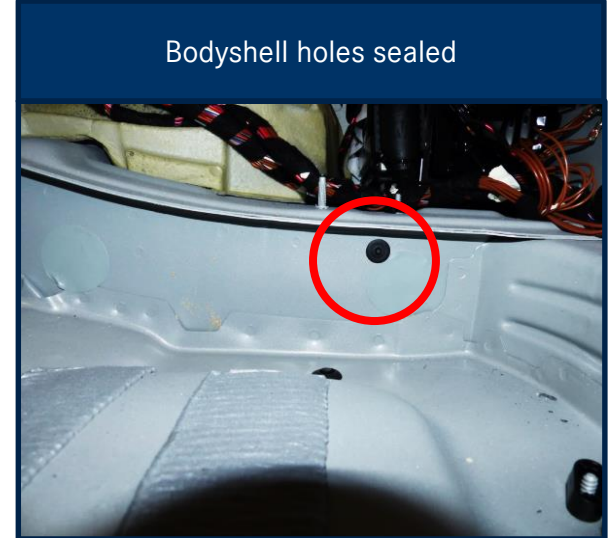
Fault location
Longitudinal member, rear,
right



Bodyshell holes open



Bodyshell holes sealed



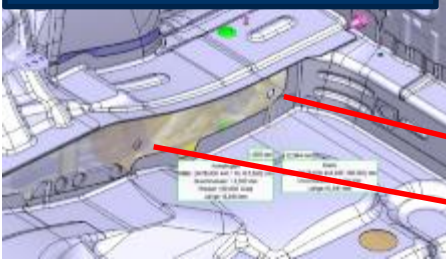
Item number
A 000 998 11 90



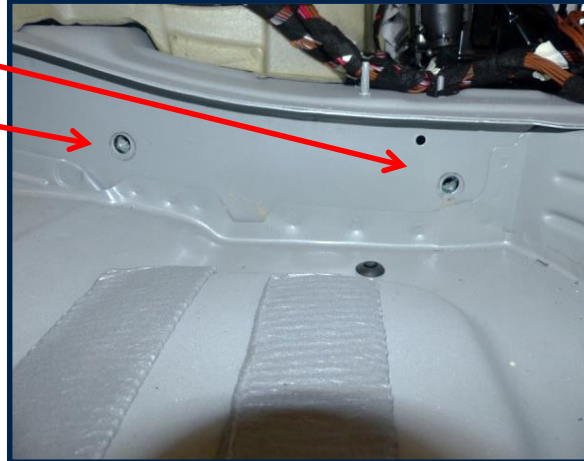
Note: Bodyshell opening only present on right-hand side. On variant X166, the bodyshell opening is located further forward in the direction of travel.

BR166 - Sealing bodyshell openings

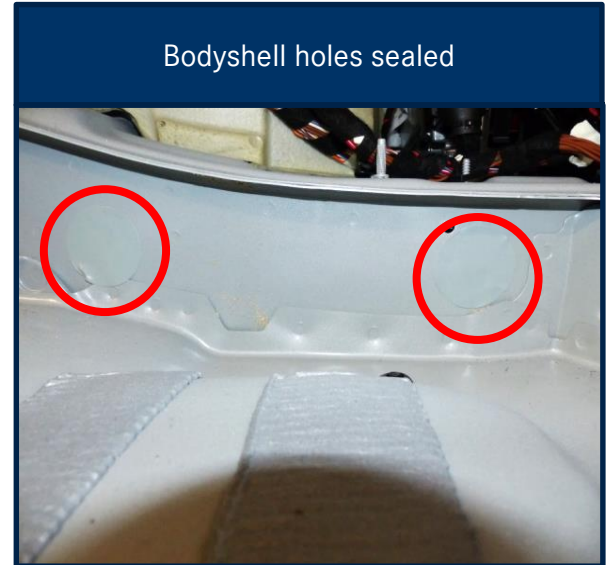
Fault location
Longitudinal member, rear,
right



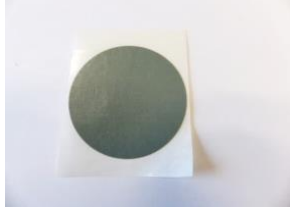
Bodyshell holes open



Bodyshell holes sealed



Item number
A 006 989 30 85



Note: Perform task on right-hand side. Two bodyshell holes are sealed with screws on vehicles with a trailer hitch. Variant X166 has one additional bodyshell opening which must also be sealed.