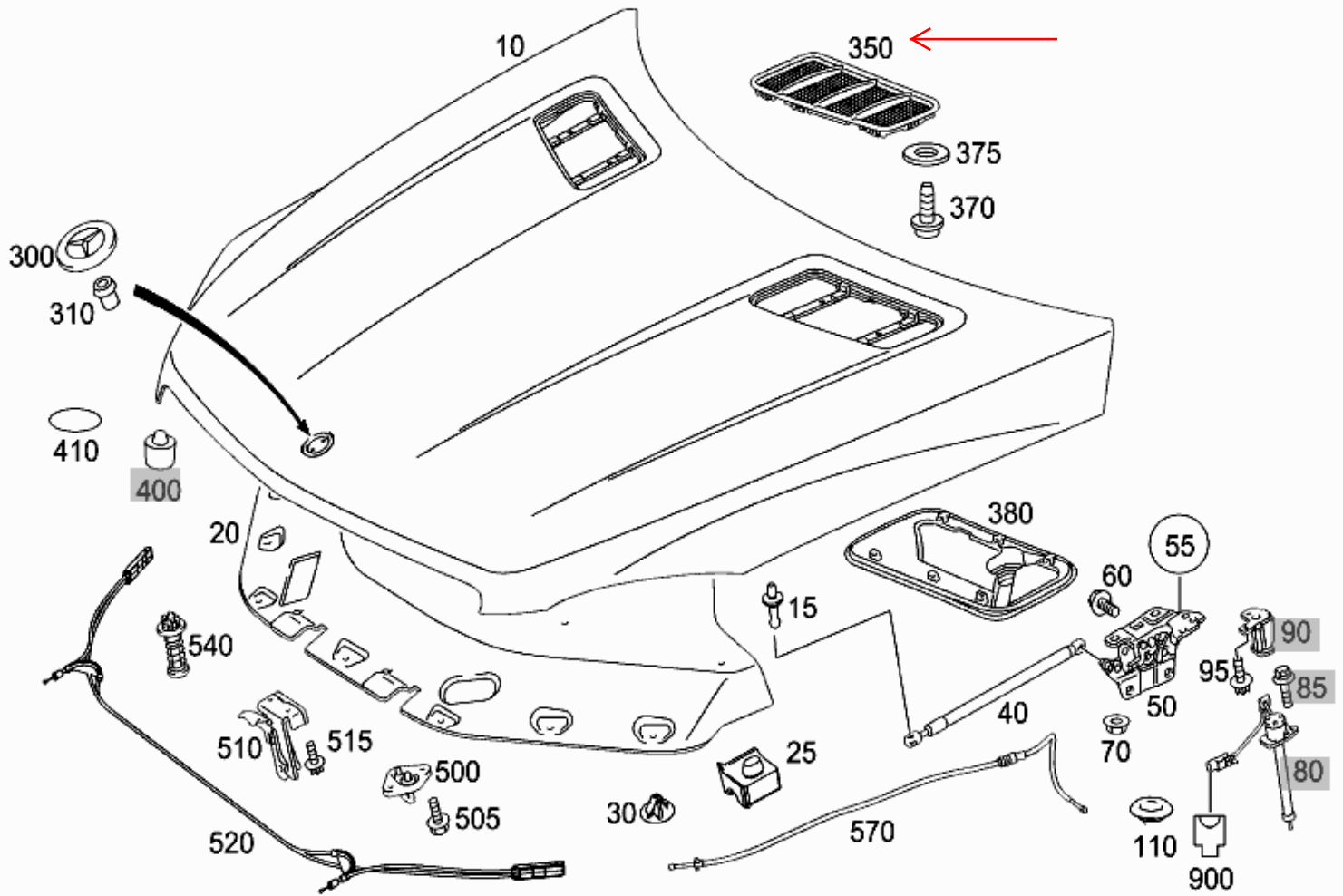


- Picture -


Mode	MD mode	Mod. des. overview	ML-SEDAN/GLE-SPORT UTILITY VEHICLE
FIN/MD	4JG 1660571A113714	Catalog	D62
VIN	4JGDA5HB3DA113714	Major assembly:	
Sales designation	ML 350 4MATIC	Major assembly MD	
Assortment class	Car	Group	88 - ATTACHMENT PARTS
Market	North America	Subgroup	120 - ENGINE HOOD
Picture number	B88120000237.130114		



- Parts list -

Mode	MD mode	Mod. des. overview	ML-SEDAN/GLE-SPORT UTILITY VEHICLE
FIN/MD	4JG 1660571A113714	Catalog	D62
VIN	4JGDA5HB3DA113714	Major assembly:	
Sales designation	ML 350 4MATIC	Major assembly MD	
Assortment class	Car	Group	88 - ATTACHMENT PARTS
Market	North America	Subgroup	120 - ENGINE HOOD

Item no.	Part number	Designation/description	Quantity	Version
10	A 166 880 00 57	HOOD Code: 802/803/804/805	001	
15	A 000 993 74 60	. BALL PIN GAS PRESSURE SPRING TO ENGINE HOOD	002	
20	A 166 682 01 26	INSULATION ENGINE HOOD ENGINE HOOD	001	
25	A 166 682 02 26	INSULATION ENGINE HOOD ENGINE HOOD, LEFT H	001	
25	A 166 682 03 26	INSULATION ENGINE HOOD ENGINE HOOD,RIGHT	001	
30	A 001 988 03 25	PLUG-IN MOUNTING INSULATION TO ENGINE HOOD	014	
40	A 166 980 23 64	GAS PRESSURE STRUT ENGINE HOOD, LEFT	001	
40	A 166 980 24 64	GAS PRESSURE STRUT ENGINE HOOD,RIGHT	001	
50	A 166 880 00 28	HINGE ENGINE HOOD, LEFT	001	
50	A 166 880 01 28	HINGE ENGINE HOOD,RIGHT	001	
55	A 166 887 00 38	TS HINGE GUIDE HINGE, LEFT AND RIGHT	001	
60	A 005 990 17 00	HEXAGON HEAD BOLT HINGE AT BODY SHELL, LEFT M8X25	002	
60	A 005 990 17 00	HEXAGON HEAD BOLT HINGE AT BODY SHELL, RIGHT M8X25	002	
70	A 005 990 20 50	COMBINATION NUT HINGE AT ENGINE HOOD, LEFT M8	002	
70	A 005 990 20 50	COMBINATION NUT HINGE AT ENGINE HOOD, RIGHT M8	002	
95	A 002 990 76 00	BOLT CONSOLE MOUNTING, LEFT M6X24	002	
95	A 002 990 76 00	BOLT CONSOLE MOUNTING, RIGHT M6X24	002	
110	A 002 998 62 50	PLUG LEFT AND RIGHT Code: -U60	002	
300	A 207 817 03 16	COMPANY SIGN AT ENGINE HOOD Code: FW/-832+FV/-703+FV	001	
310	A 201 997 22 81	GROMMET BADGE ON ENGINE HOOD	002	
350	A 166 880 01 05	COVER ENGINE HOOD, LEFT Code: FW/-832+FV/-703+FV	001	
350	A 166 880 02 05	COVER ENGINE HOOD,RIGHT Code: FW/-832+FV/-703+FV	001	
350	A 166 880 15 05	COVER ENGINE HOOD,RIGHT Code: 1U2	001	L
370	A 001 984 63 29	HEXALOBULAR BOLT FASTENING COVER LEFT AND RIGHT M5X12	004	
375	N 000000 003895	WASHER FASTENING COVER LEFT AND RIGHT	004	
380	A 166 880 07 05	COVER BOTTOM LEFT	001	L

380	A 166 880 08 05	COVER BOTTOM RIGHT	001	L
410	A 220 889 10 95	INTERMEDIATE LAYER LEFT AND RIGHT Code: 802/803/804/805	002	
500	A 212 880 00 60	ENGINE HOOD CATCH AT ENGINE HOOD	002	
505	N 910143 006002	HEXALOBULAR BOLT ATTACHMENT COVER M6X20	004	
510	A 204 880 00 64	SAFETY HOOK ENGINE HOOD	001	
515	N 910143 006002	HEXALOBULAR BOLT SAFETY HOOK TO ENGINE HOOD M6X20	002	
520	A 166 880 01 59	HOOD CABLE FRONT	001	
540	A 166 880 00 27	SPRING ELEMENT LEFT AND RIGHT	002	
570	A 166 880 00 59	HOOD CABLE ENGINE HOOD CATCH  [086] To Chassis: A To Date: 05/11/2014	001	L
900	A 049 545 64 28	PLUG ENGINE HOOD ACTUATOR 2-PIN MQS;R12/49, R12/50	001	