

Document number: pe54.15-p-2107-97rab

Document title: Wiring diagram for front fuse and relay box

Code: Designation: Position:

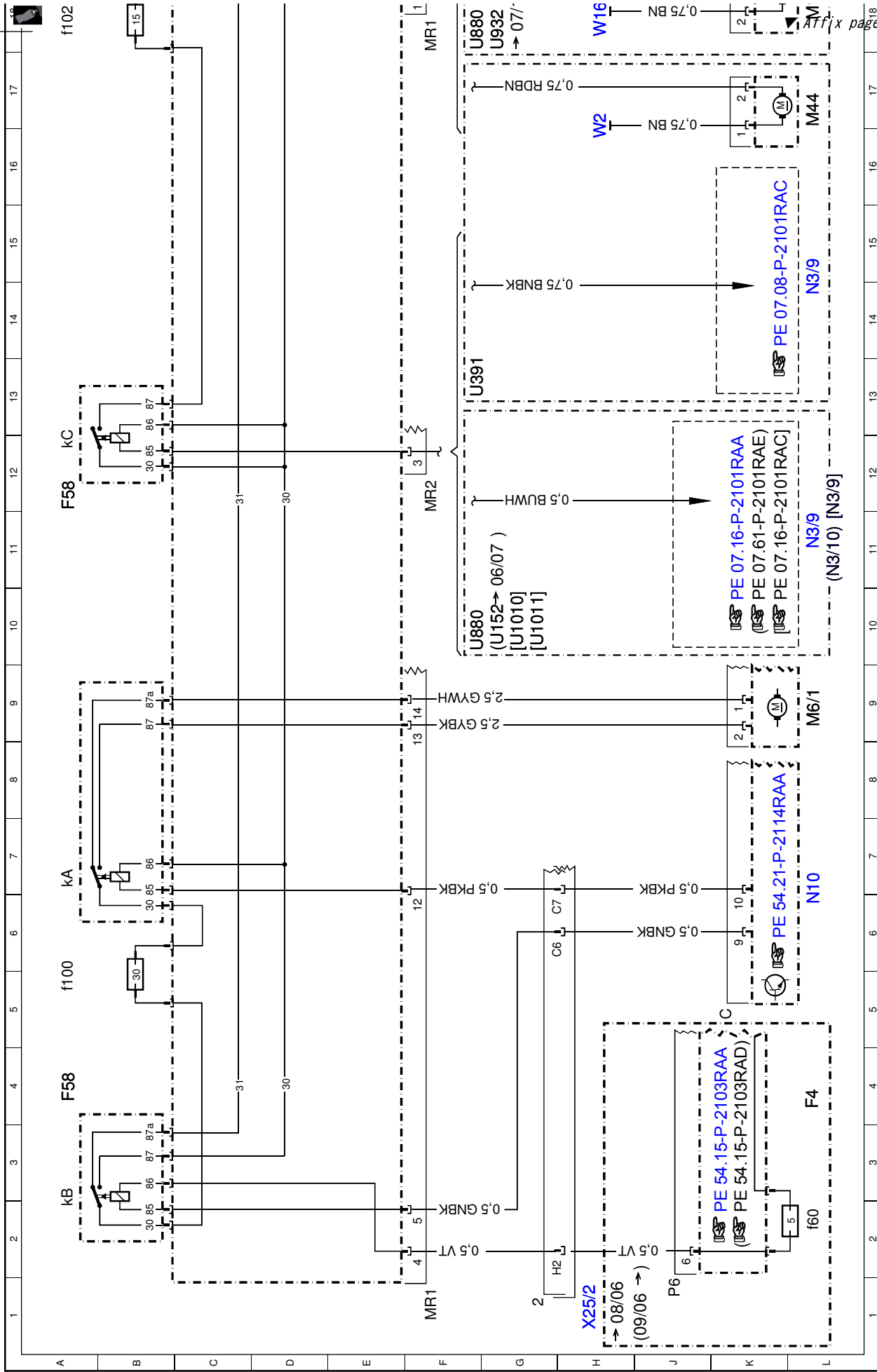
A0	Color code key	72L
A6	STH heater unit	44L
A80	Intelligent servo module for DIRECT SELECT	24L
A89	DTR control unit	48L
F4	Load compartment fuse and relay box	4L
F4f60	Fuse 60	2L
F58	Engine compartment fuse and relay box	4A
F58	Engine compartment fuse and relay box	12A
F58	Engine compartment fuse and relay box	20A
F58	Engine compartment fuse and relay box	35A
F58	Engine compartment fuse and relay box	45A
F58	Engine compartment fuse and relay box	52A
F58	Engine compartment fuse and relay box	64A
F58	Engine compartment fuse and relay box	28A
F58f100	Fuse 100	5A
F58f102	Fuse 102	18A
F58f109	Fuse 109	40A
F58f110	Fuse 110	26A
F58f111	Fuse 111	23A
F58f112	Fuse 112	29A
F58f113	Fuse 113	36A
F58f115	Fuse 115	41A
F58f116	Fuse 116	44A
F58f116	Fuse 116	51A
F58f117	Fuse 117	48A
F58kA	Wiper level 1/2 relay	7A
F58kB	Wiper ON/OFF relay	3A
F58kC	Coolant circulation pump relay	12A
F58kF	Fanfare horn relay	34A
F58kG	Air suspension compressor	61A
F58kH	Circuit 15 relay	21A
H2	Left fanfare horn	32L
H2	Left fanfare horn	35L
H2/1	Right fanfare horn	33L
H2/1	Right fanfare horn	37L
H3/1	Alarm signal siren	26L
M13/7	Transmission oil cooler circulation pump	18L
M44	Charge air cooler circulation pump	17L
M45	Engine coolant circulation pump	20L

Document number: pe54.15-p-2107-97rab

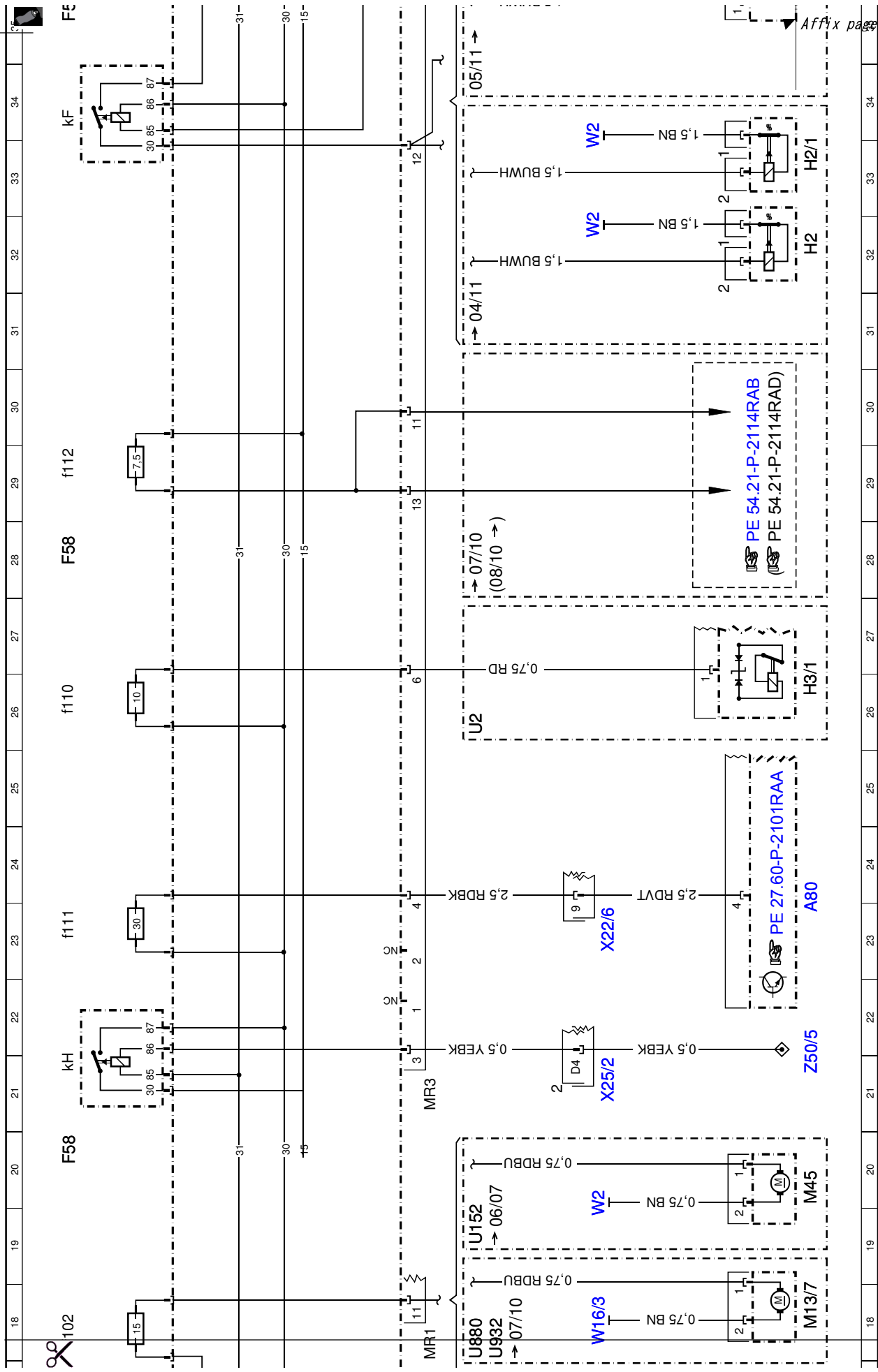
Document title: Wiring diagram for front fuse and relay box

Code: Designation: Position:

M6/1	Wiper motor	9L
N10	Front SAM control unit	7L
N10	Front SAM control unit	38L
N3/10	ME-SFI [ME] control unit	11L
N3/9	CDI control unit	56L
N3/9	CDI control unit	11L
N3/9	CDI control unit	12L
N3/9	CDI control unit	14L
N47-5	ESP control unit	41L
U1010	Valid for engine 642.870 BLUETEC	54G
U1010	Valid for engine 642.870 BLUETEC	10G
U1011	Valid for engine 642.872	10G
U1011	Valid for engine 642.872	54G
U152	Valid for engine 156	19G
U152	Valid for engine 156	10G
U2	Valid for all except {[USA]}	26G
U391	Valid for gasoline engine 276.8	13G
U502	Valid for AIRMATIC	58J
U504	Valid for DTR	46G
U511	Valid for customer request option	37B
U512	Valid for level control	58J
U579	Valid for stationary heater	43G
U880	Valid for engine 642	18G
U880	Valid for engine 642	10G
U932	Valid for engine 642 BLUETEC	18G
W16/3	Ground (left assembly compartment, power ground)	18H
W2	Ground (right front, at lamp unit)	20H
W2	Ground (right front, at lamp unit)	32H
W2	Ground (right front, at lamp unit)	34H
W2	Ground (right front, at lamp unit)	37H
W2	Ground (right front, at lamp unit)	36H
W2	Ground (right front, at lamp unit)	16H
X22/6	Automatic transmission/intelligent servo module connector	23H
X22/6	Automatic transmission/intelligent servo module connector	51H
X25/2	Engine compartment/interior compartment connector	1H
X25/2	Engine compartment/interior compartment connector	21H
X25/2	Engine compartment/interior compartment connector	38H
Y3/8	Electric control unit (VGS)	52L
Z50/5	Im1. 15 connector sleeve	21L

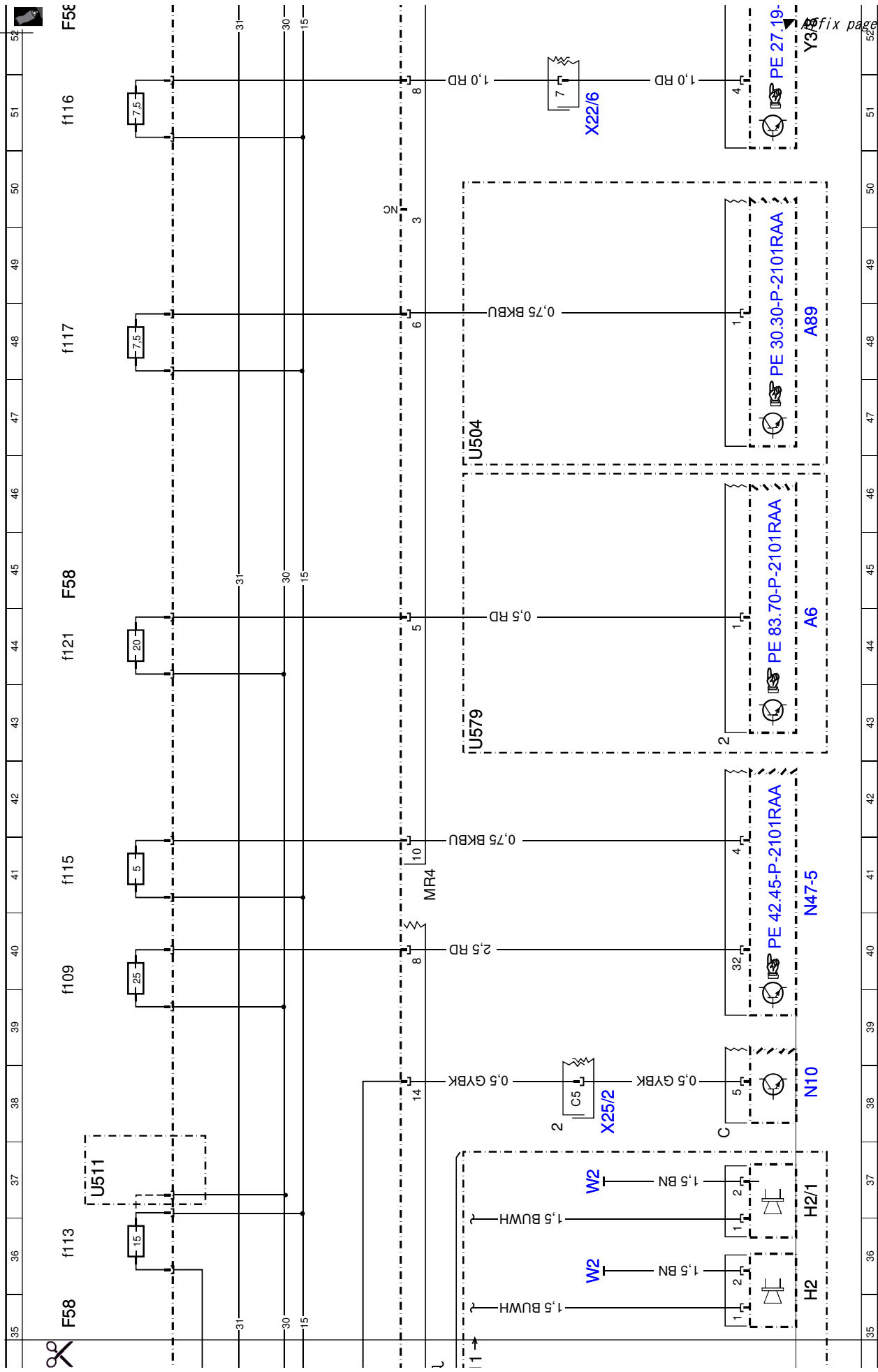


ATTN: page 2 here ▼



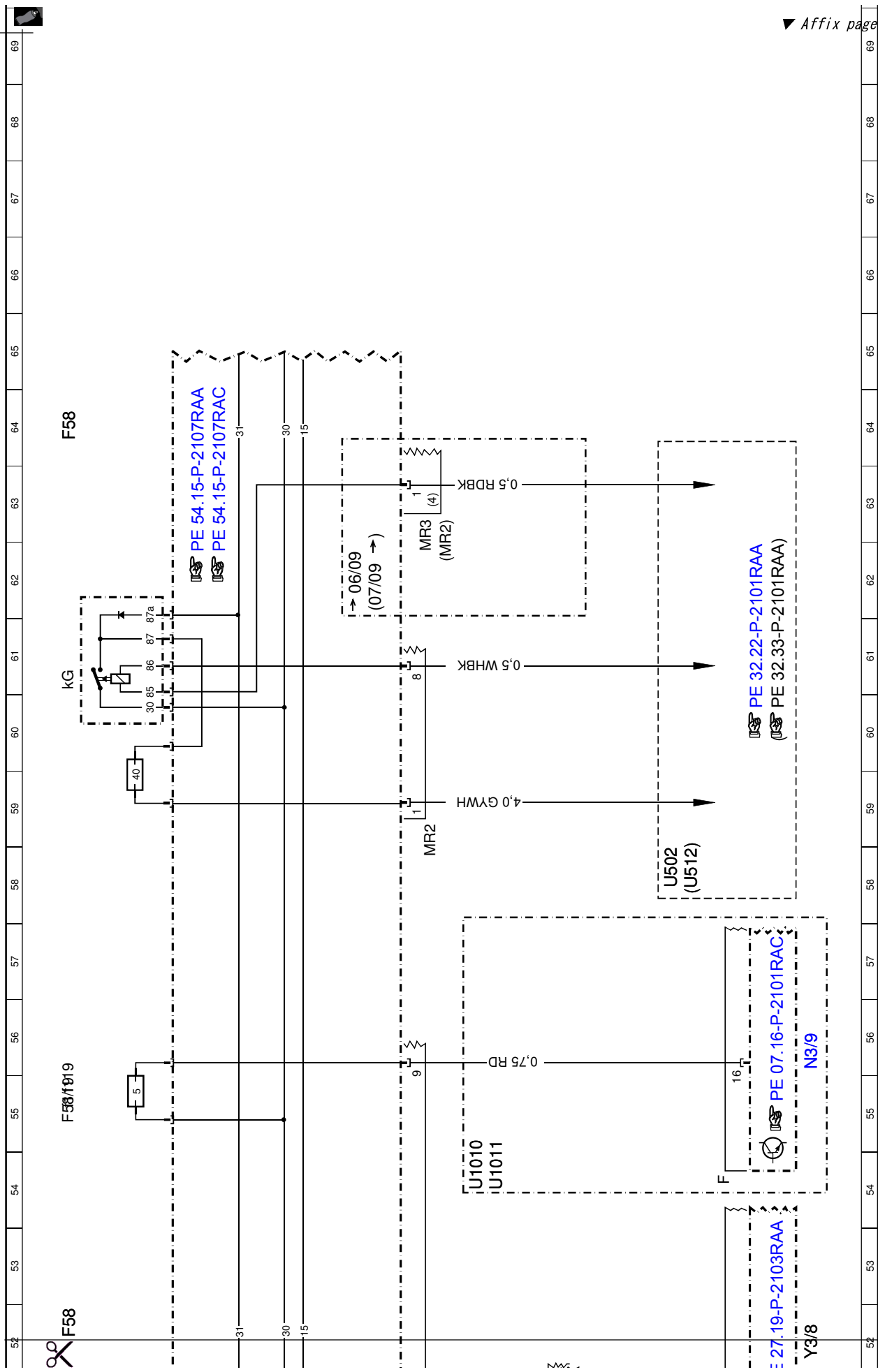
Affix page 3 here ▼

Cut here



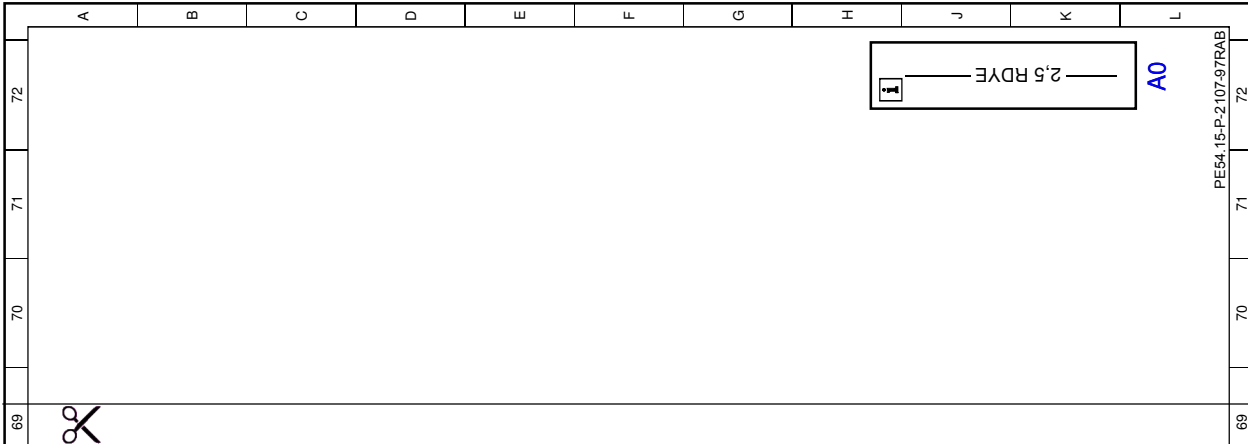
Cut here ▼

fix page 4 here ▼



▼ Affix page 5 here ▼

Cut here



Cut here