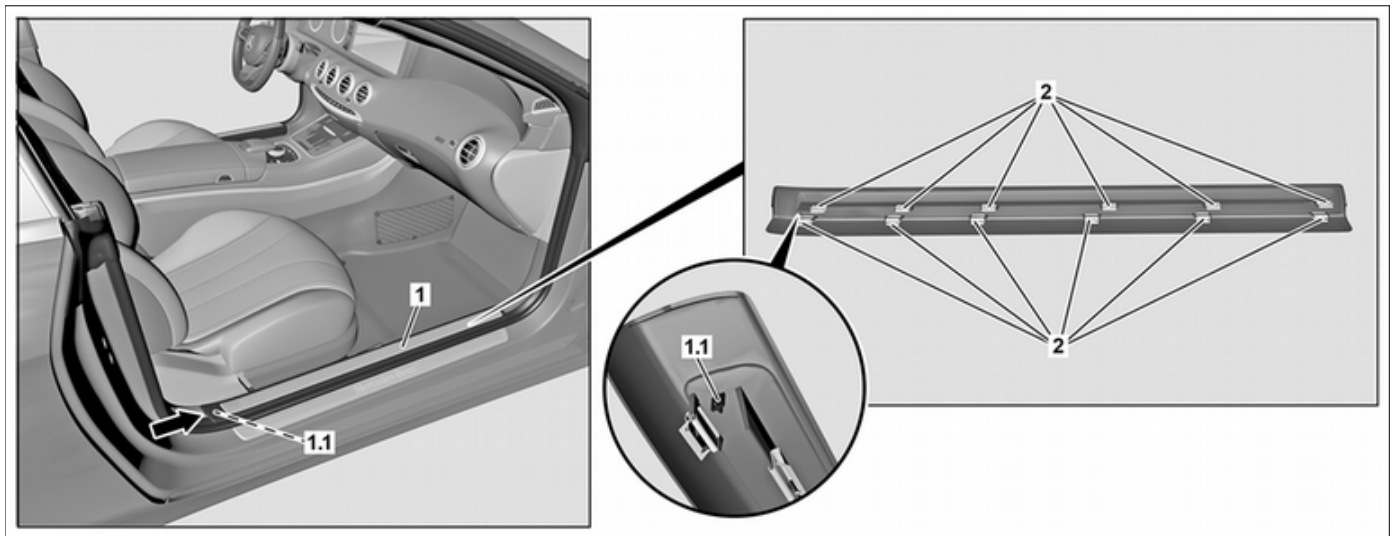


MODEL 217



P68.30-3770-08

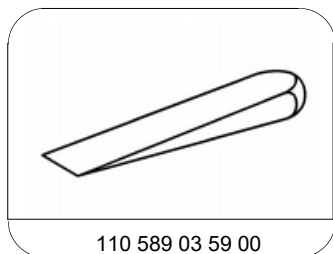
Shown on right-hand side

1 Door sill

1.1 Guide lug

2 Retaining clips

☒ ☒	Remove/install		
1	Completely open door		
2	Unclip door sill (1) upward and remove	<p>⚠ Installation: When installing the retaining clips (2), ensure that the retaining clips (2) are attached in the correct position. The electrical wiring harness under the door sill can otherwise be damaged.</p> <p>i Installation: Replace damaged retaining clips (2). Ensure that retaining clips (2) and guide lugs (1.1) are seated correctly in mounts.</p> <p>☑ Mounting wedge</p>	*110589035900
3	Install in the reverse order		



110 589 03 59 00

Mounting wedge