



Congratulations on your selection to purchase an Arnott Air Suspension System. We at Arnott Air Suspension Systems are proud to offer a high quality product at the industries most competitive pricing. Thank you for your confidence in us and our product.

Proper installation is essential to experience and appreciate the benefits of this system. Please take a moment to review these installation instructions before you begin to install this system on your vehicle.

It is equally important to be aware of all necessary safety measures while installing your new Air Ride System. This includes proper lifting and immobilizing of the vehicle and isolation of any stored energy to prevent personal injury or property damage.

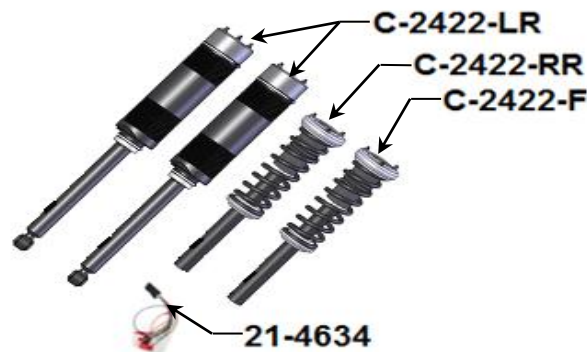
“Engineered to Ride, Built to last”



WARNING: *The air suspension system is under pressure (up to 10 bar, or 150 lbf/in) verify pressure has been relieved and disconnect power to the air ride system prior to disassembly. Do not allow dirt or grease to enter the system. Always wear standard protective hand, ear, and eye protection when servicing the air suspension system.*

Kit contains:

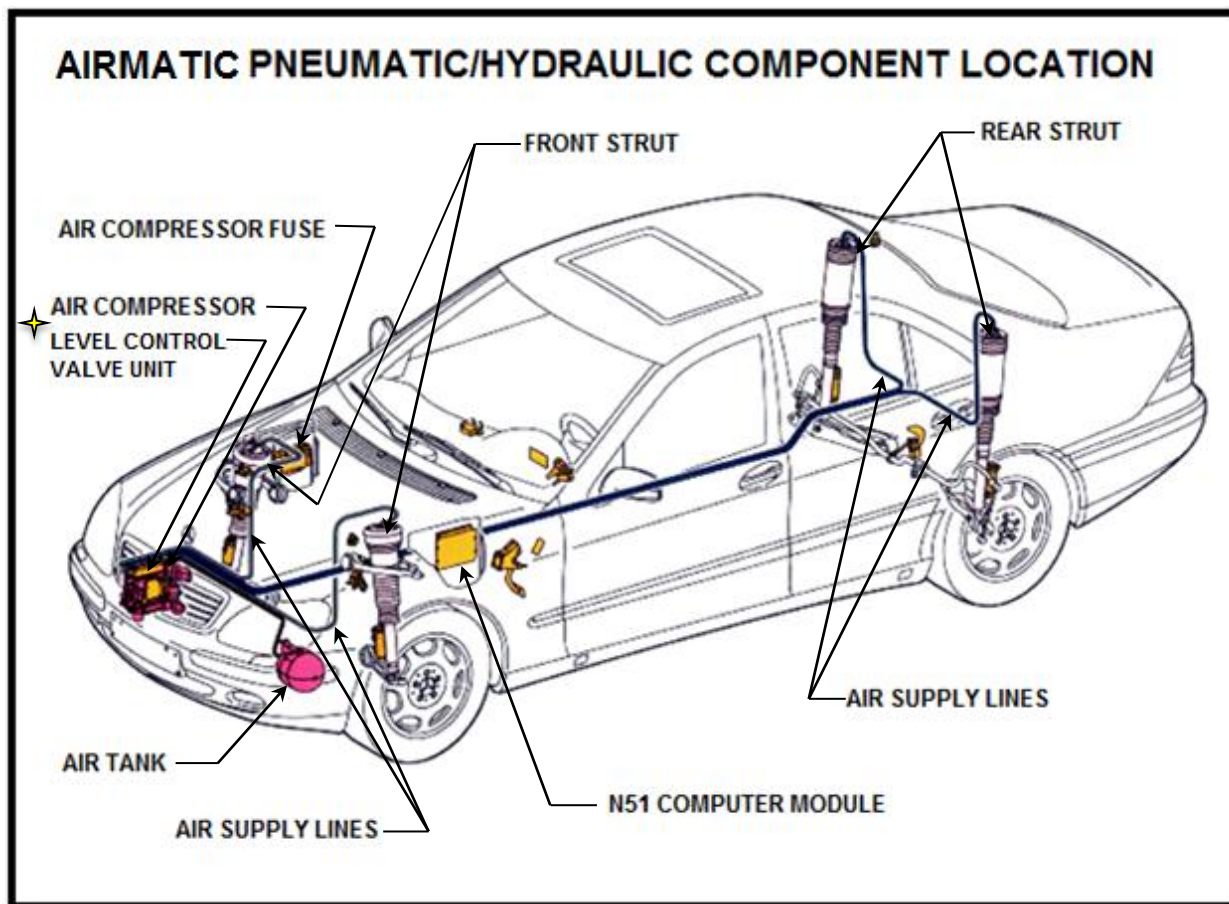
PARTS LIST		
P/N	QTY	DESCRIPTION
C-2242-F	2	STRUT ASSEMBLY, FRONT
C-2242-RR	1	STRUT ASSEMBLY, RIGHT REAR
C-2242-LR	1	STRUT ASSEMBLY, LEFT REAR
21-4634	1	AIRMATIC SPOOFER ASSEMBLY





General information:

- * Struts not to be stored below 5 °F (-15 °C) and above 122 °F (50 °C).
- * Avoid damage to air lines and cables.
- * Removal and installation is only to be performed by full qualified personnel.
- * Use car manufacturer's diagnostic software.
- * **CAUTION:** Damage to the vehicle and strut assembly can be incurred if work is carried out in a manner other than specified in the instructions or in a different sequence.



✦ **NOTE:** DO NOT REMOVE THE AIR COMPRESSOR OR LEVEL CONTROL VALVE UNIT FROM THE AIRMATIC PNEUMATIC/HYDRAULIC SYSTEM; DOING SO WILL CAUSE ERRORS TO THE N51 AIRMATIC COMPUTER MODULE.



FRONT STRUT REMOVAL:

NOTE: FRONT STRUT REMOVAL/INSTALLATION IS FOR BOTH THE FRONT RIGHT AND LEFT STRUT ASSEMBLIES.

! *The ignition must remain switched off during the strut removal and replacement.*

- 1.0 Set steering to straight ahead.
- 2.0 Remove the air compressor fuse (located on the passenger's side fuse box (f32 in K40/7 fuse and relay module) in engine compartment) (Figure A).

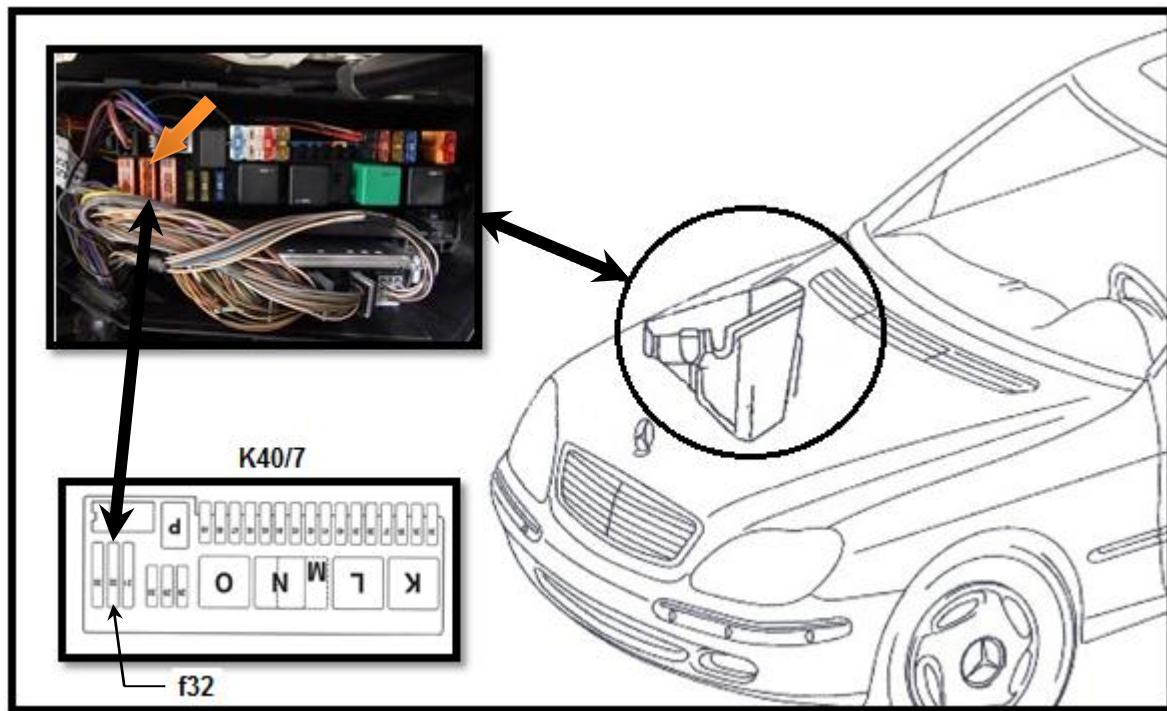


Figure A

! *Use lifting platform (hoist) that is capable of raising the body separately from the wheels, lift body at the lifting points prescribed by the vehicle manufacturer.*

Vehicle slippage can cause danger to life and limb.

- 3.0 Raise vehicle.



NOTE: FRONT COIL STRUT ASSEMBLIES ARE NOT SIDE SPECIFIC.

- 4.0 Remove front tire(s).
- 5.0 Disconnect the strut control cable connector located in the fender well (Figure B).

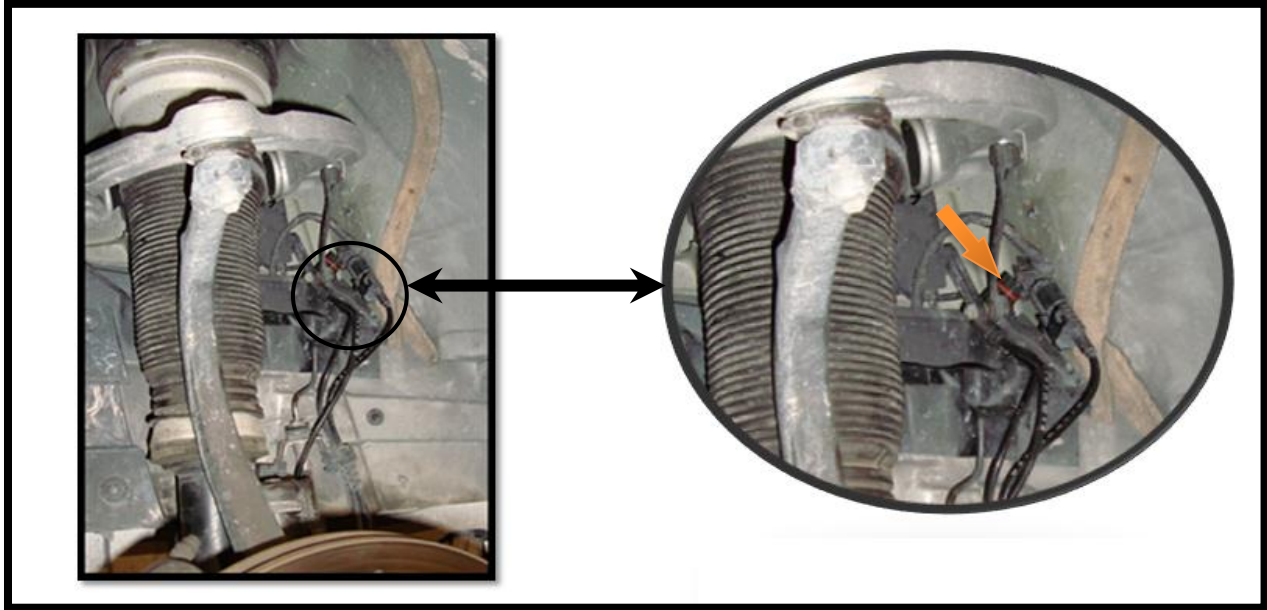


Figure B

- 6.0 Loosen the two (2) set screws (180° apart) located on the bottom of the strut assembly (Figure C).
- 7.0 Raise the hood.
- 8.0 Disconnect the air supply line to the strut assembly (figure D).



Figure C



Figure D



9.0 Remove the ball joint at the upper control arm; remove strut assembly (Figure E).



Figure E

10.0 Remove the three (3) nuts holding the top mount of the strut (figure F).



Figure F



FRONT STRUT INSTALLATION:



Torque nuts and bolts to the manufactures specification.


- 1.0 Install the new C-2242-F strut assembly into the upper and lower strut mounts.
- 2.0 Tighten the top 3 nuts to the manufacturers' specification.
- 3.0 Tighten the 2 (two) set screws equally on the bottom of the strut assembly.
- 4.0 Re-install the upper ball joint at the upper control arm.
- 5.0 Connect strut control cable connector.
- 6.0 Install tire, tighten lug nuts to manufacturers' specification.
- 7.0 Cover the open end of the air supply line and secure.
- 8.0 Lower vehicle to standard vehicle height from the lifting platform.



REAR STRUT REMOVAL:

NOTE: REAR STRUT REMOVAL/INSTALLATION IS FOR BOTH THE REAR RIGHT AND LEFT STRUT.

 *The ignition must remain switched off during the strut removal and replacement.*

 *Use lifting platform (hoist) that is capable of raising the body separately from the wheels, lift body at the lifting points prescribed by the vehicle manufacturer.*

Vehicle slippage can cause danger to life and limb.

1.0 Raise vehicle.

CAUTION: THERE IS A LEFT AND RIGHT COIL STRUT ASSEMBLY. INCORRECT INSTALLATION CAN CAUSE DAMAGE TO COIL STRUT ASSEMBLY.

2.0 Remove rear tire.

3.0 Remove the side cover of the hat rack to expose the top of the air strut (located in the rear window area) (Figure G).



Figure G



- 4.0 Disconnect the airline and the 3 mounting nuts from the top of the air strut (Figure H).



Air pressure! Release slowly and allow pressure to escape.

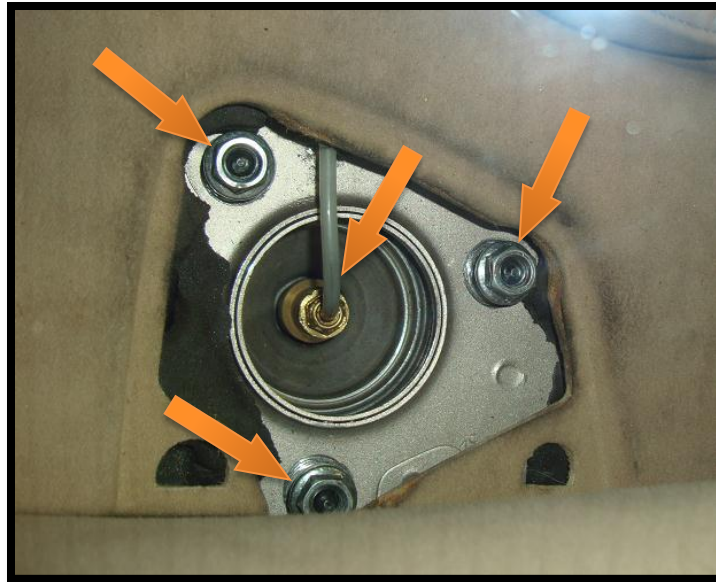


Figure H

- 5.0 Remove rubber boot and disconnect electrical connector leading to the strut damper solenoid. (Figure I)

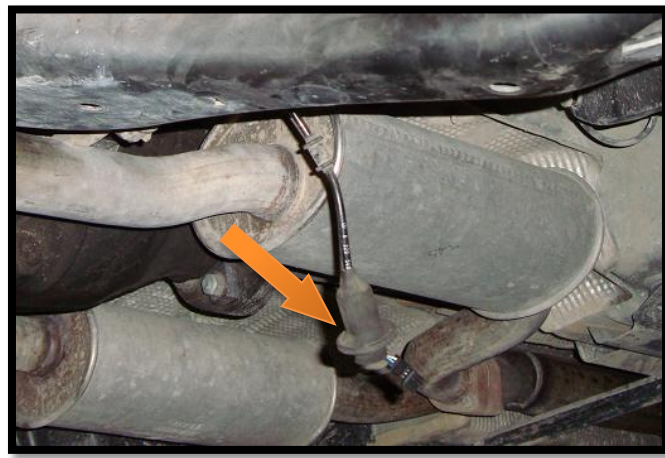
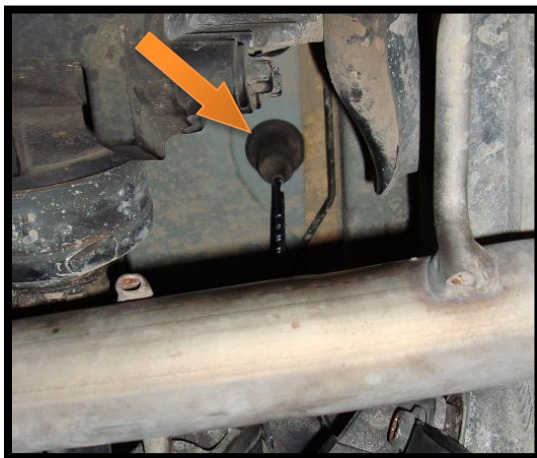
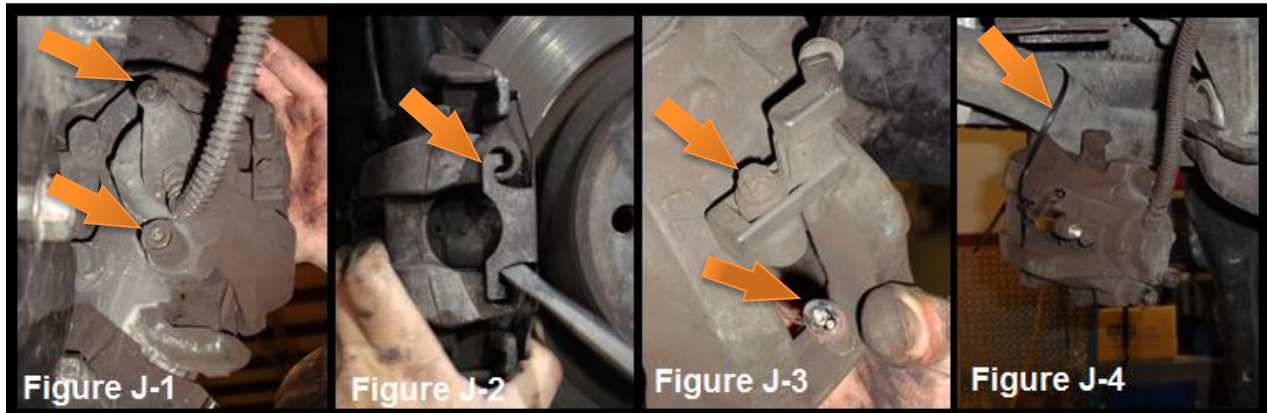


Figure I



- 6.0 Remove rear brake caliper:
 - 6.1 Loosen the two (2) bolts on the backside of the caliper (Figure J-1)
 - 6.2 Remove the retaining clip (Figure J-2).
 - 6.3 Disconnect the sensor connector and remove the sensor bracket (Figure J-3).
 - 6.4 Secure the caliper (Figure J-4).



- 7.0 Disassemble the outer suspension arm (Figure K).



Figure K



8.0 Disassembly the stabilizer bar link (Figure L).



Figure L

9.0 Remove the bolt and nut connecting the strut assembly to the suspension arm (Figure M).

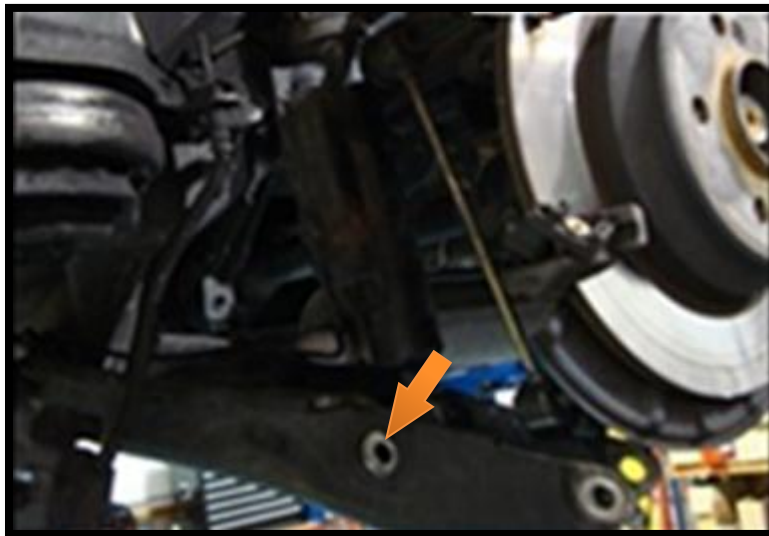


Figure M



- 10.0 Loosen the lower control bolt slightly (this will allow the lower control arm to swing down) (Figure N).

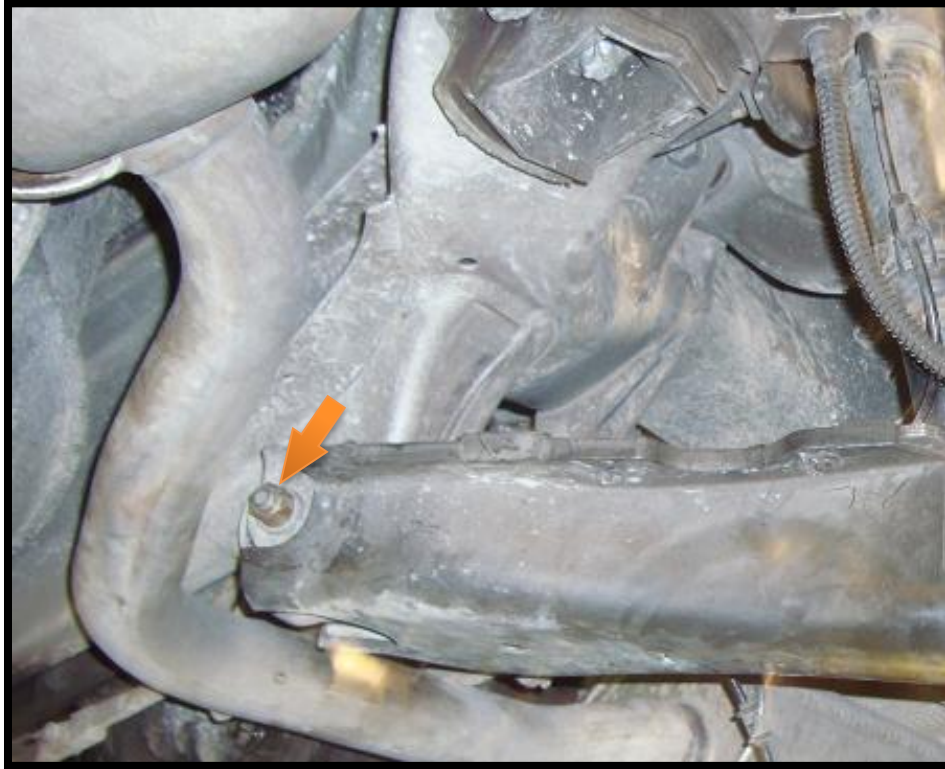



Figure N

- 11.0 Remove strut assembly from car.



REAR STRUT INSTALLATION:

 ***Torque nuts and bolts to the manufactures specification.***

- 1.0 Install the new coil conversion strut assembly into the top mounting holes, screw on the three (3) nuts (Figure O).



Figure O

- 2.0 Assemble the coil conversion strut to the suspension arm (Figure P).



Figure P



- 3.0 Assemble the suspension arm on the outside (Figure Q). It may be necessary to use a jack on the suspension arm to install the bolt and nut (Figure R).



Figure Q



Figure R

- 4.0 Assemble the stabilizer bar link (Figure S).
5.0 Tighten the lower control bolt (Figure T).

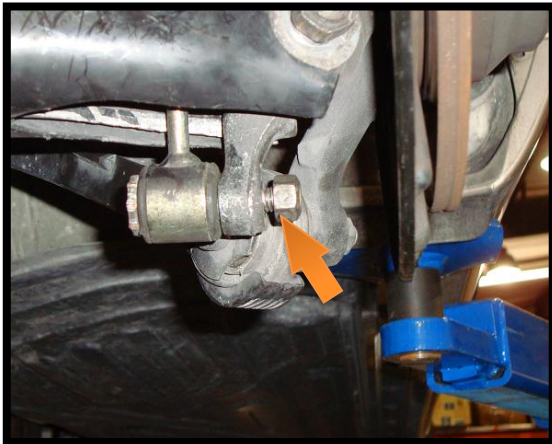


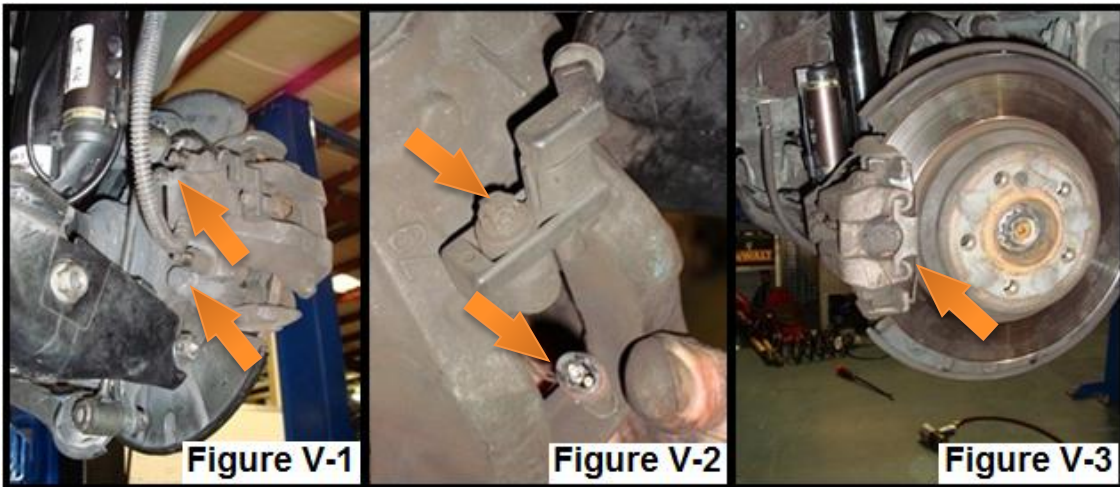
Figure S



Figure T



- 6.0 Re-install the rear brake caliper.
 - 6.1 Install caliper, tighten the two (2) bolts on the backside of the caliper (Figure V-1).
 - 6.2 Re-connect the sensor connector and re-install the sensor bracket bolt (Figure V-2).
 - 6.3 Re-install retaining clip (Figure V-3).



- 7.0 Install rear tire(s).
- 8.0 Lower vehicle to standard vehicle height from the lifting platform.
- 9.0 Re-install hat rack side cover (cover end of airline and lay under cover).

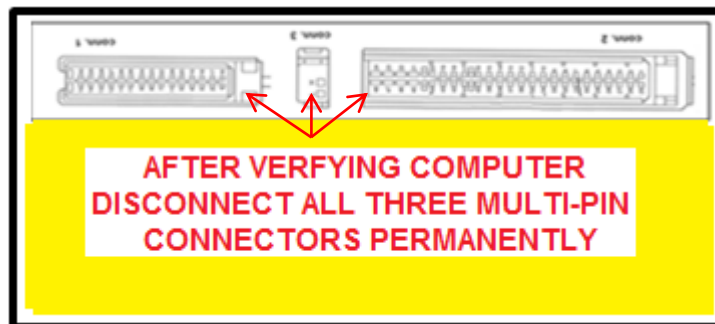


AIRMATIC SPOOFER INSTALLATION:

- 1.0 Locate the N51 control module (located in the driver side fuse box) verify that it has one of the two part numbers on it (Figure A).



Figure A



- 2.0 Connect light blue connector from AIRMATIC Spoofer to the wire harness side of the vehicle N-51 can-bus 2 pin connector. (Figure C)

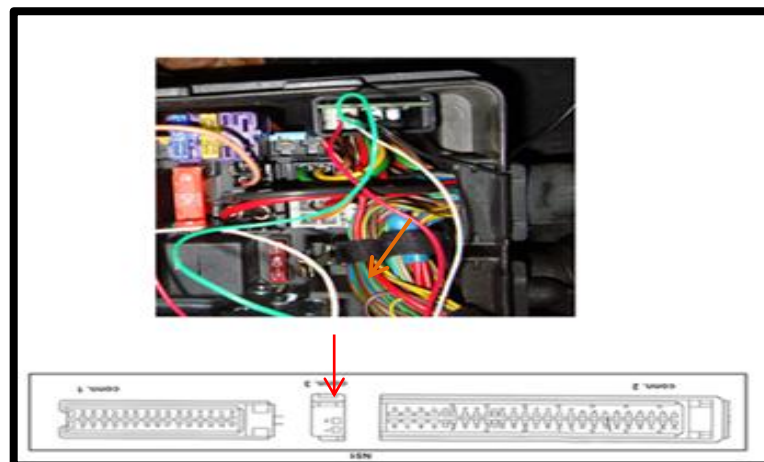


Figure C



- 3.0 Run the ground wire from the AIRMATIC Spoofer to the nearest vehicle ground terminal (Figure D).

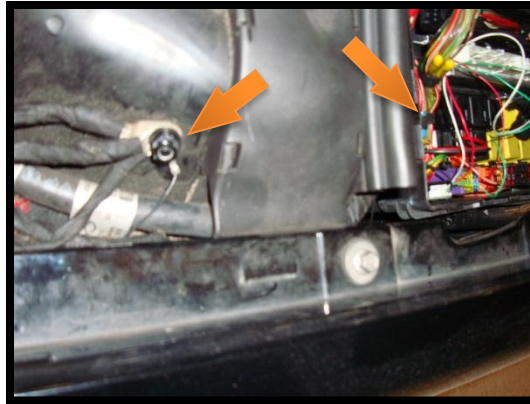


Figure D

- 4.0 Locate an open power terminal in the fuse panel, install the fuse holder (12+ V) (Figure G).
- 5.0 Re-install fuse box cover (Figure H).

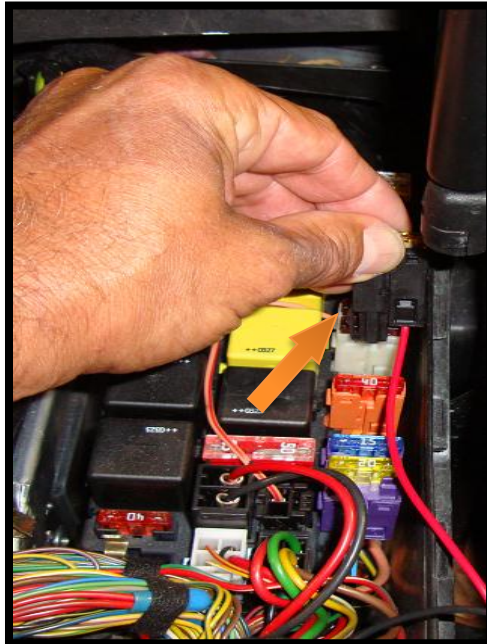


Figure G



Figure H

- 6.0 Installation complete.